

Ballasted POWER PEAK™

Non Penetrating Ground Mount System



-  COMMUNICATIONS
-  ENERGY
-  SPECIAL INDUSTRIES
-  SOLAR



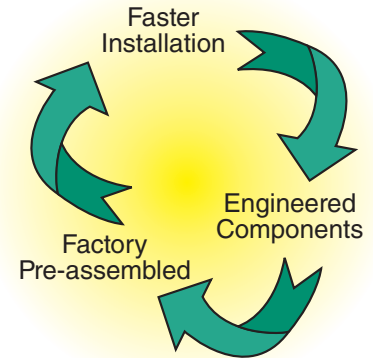
The Ballasted POWER PEAK™ – PV Solar Mounting System



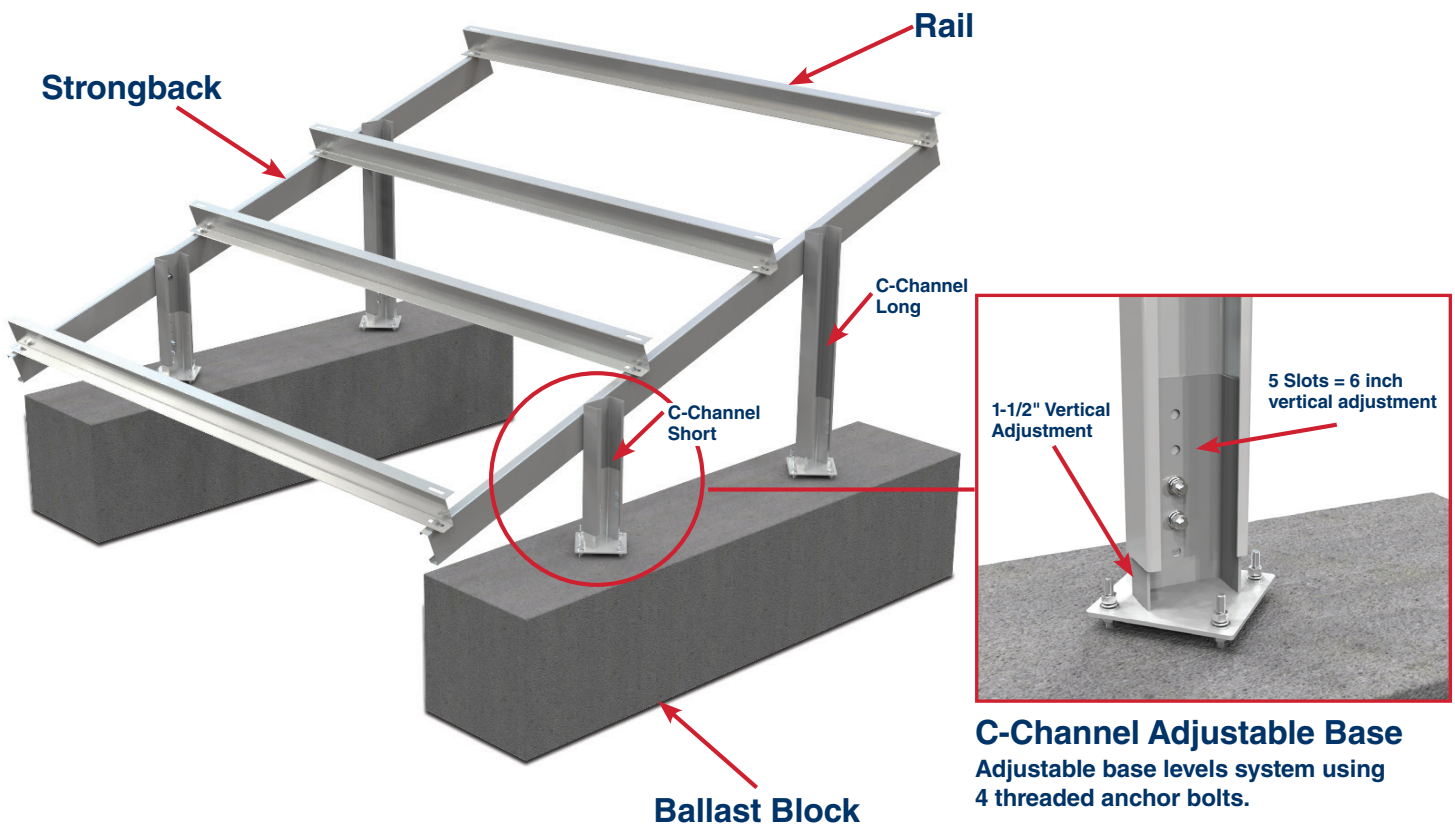
The **Ballasted POWER PEAK™** system is designed for project sites with unfavorable soil or ground conditions that prohibit pile driving. Each ballasted Power Peak system is engineered to site-specific environments and arrives on the project site ready to assemble on precast or poured-in-place concrete bases. PV modules are mounted in a two-row portrait configuration where the number of modules in each row match the string size for easier and more efficient wire management.

The Ballasted POWER PEAK system features bottom access PV module clamping which eliminates the need for ladders. The module clamps are preassembled with no loose parts for faster installation rates and code-compliant integrated electric bonding.

The Ballasted POWER PEAK system features C-Channel verticals with adjustable bases that allow for uneven ballast blocks and terrain changes. Multiple vertical and horizontal slots and adjustments allow the table tops to be quickly squared, resulting in faster PV module placement and a professional finish.



Six main components and attaching hardware.



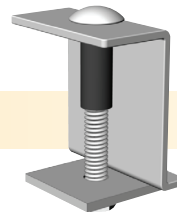
The Ballasted POWER PEAK™ – PV Solar Mounting System

Key Benefits

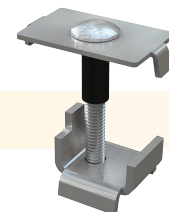
- **Site Optimized Designs**
Reduces overall material costs
- **String Size Matched Sub-arrays**
Faster repetitive layouts and easier wiring
- **Pre-drilled C-Channel Vertical Posts**
Eliminates on-site fabrication and potential corrosion
- **Racking Adjustment Slots**
Easier to square the structure
- **Module Clamp Assemblies**
Faster installation and fewer parts
- **Lightweight Components**
Eliminates heavy-duty lifting equipment and promotes “assembly-line” installation
- **Integral Wire Management**
Reduces labor, and provides a clean and professional appearance
- **Tested to UL2703 Requirements**
- **Wind Tunnel Certified**
Reduces overall material costs
- **Adjusts to Rolling Terrain**
Reduces labor and improves array appearance



Optional Sub Array or Continuous Array Layouts



End Clamp Assembly
Used on E-W ends of array.



Mid Clamp Assembly
Used between sets of modules.

Technical Services Offered:

- PE Stamps
- Permit Ready Drawings

PLP's engineering staff is available to assist with your next project. Please visit preformed.com and complete an RFQ Form or contact our product support team at (800) 260-3792.



POWER PEAK™ AL

Lightweight Aluminum Components

Adjusts to Rolling Terrain, Preassembly Speeds Installation

The POWER PEAK AL system features preassembled strong-backs, attachments and module clamps for faster build rates and fewer parts on site. The Aluminum rails adapt to rolling terrain and provide wire management. The patented RAD™ bolt speeds up PV module installations.



POWER PEAK™ GS

High Strength Galvanized Steel Construction

Longer Spans, Fewer Verticals

The POWER PEAK GS features stronger galvanized purlins with a unique overlapping feature that eliminates field splices and requires fewer fasteners. Preassembled clamps that attach anywhere along the purlins provide faster build rates and reduce the number of parts on site.



PREFORMED
LINE PRODUCTS

Albuquerque Office
1700 Louisiana Blvd., Suite 130
Albuquerque, NM 87110 USA

Corporate Headquarters
660 Beta Drive
Cleveland, Ohio 44143 USA

Telephone: 800.260.3792

Fax: 505.881.0933

Web Site: preformed.com

E-mail: info@plpsolar.com

© 2017 Preformed Line Products
Printed in U.S.A.
SL-SS-1230
11.17.IH

