

Ballasted Power Rail™

0° Tilt Non-Penetrating
Flat Roof Mounting System



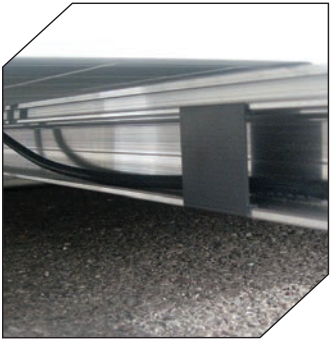
-  COMMUNICATIONS
-  ENERGY
-  SPECIAL INDUSTRIES
-  SOLAR



The Ballasted Power Rail™ PV Solar Mounting System



Increased module density



Wire management



Simple layout



Fast Top-Down clamping

Key Benefits

- 0° Tilt allows for increased module density
- Fast installation times
- Roof layout design flexibility
- Full scale wind tunnel qualification
- Reduced overall installation costs
- UL2703 Code Compliant

The high density Ballasted Power Rail mounting system is designed to install fast and provide a secure mounting structure for framed modules. Qualified test results from a full scale wind tunnel facility support designs that require less ballast weight and no roof penetrations for most site applications.

Faster Installation Time – Reduced Labor Costs

Installers prefer a racking system engineered to install quickly, with fewer components leading to a hassle-free assembly.

Precision ballast pans double as rail spacer members and eliminate measuring.

A unique modular concept provides the flexibility to design and install the mounting system around roof obstructions and avoid shaded areas.

The Ballasted Power Rail system utilizes high strength rails with integrated wiring channels and factory installed EPDM material to protect the roof surface. Ballast pans provide precise rail alignment and high strength stainless steel clamps secure most framed modules. The top-clamping system utilizes a single tool with a revolutionary patented RAD™ fastener for faster bolt placement. The unique shape of the RAD provides an anti-rotation feature locking the bolt in the proper orientation when installed.

- Single tool
- “Set down” fast module assembly
- Top access module clamps
- Patented Lock-in-Place RAD Fasteners
- EPDM protection factory installed – no additional mats required
- Integrated grounding

Installs in 4 Simple Steps

with only 3 hardware components

- 1 Distribute **Module Rails** on the roof
- 2 Install **Ballast Pans** between rails – no measuring or cutting required
- 3 Lay down Solar Modules
- 4 Install RAD Bolt and top access **Module Clamp**

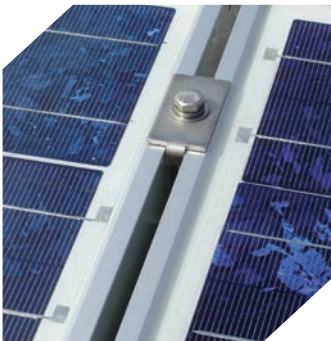


Full Scale Wind Tunnel Tested and Qualified

Field Proven – Long Lasting Construction

System Building Owners require a field proven, reliable mounting system designed to withstand environmental conditions for the life of the PV module.

- Full scale wind tunnel qualified
- Corrosion resistant aluminum components
- EPDM protection for roof surfaces
- Stainless steel fasteners
- Unimpeded water drainage



Tight inter-module spacing for higher density

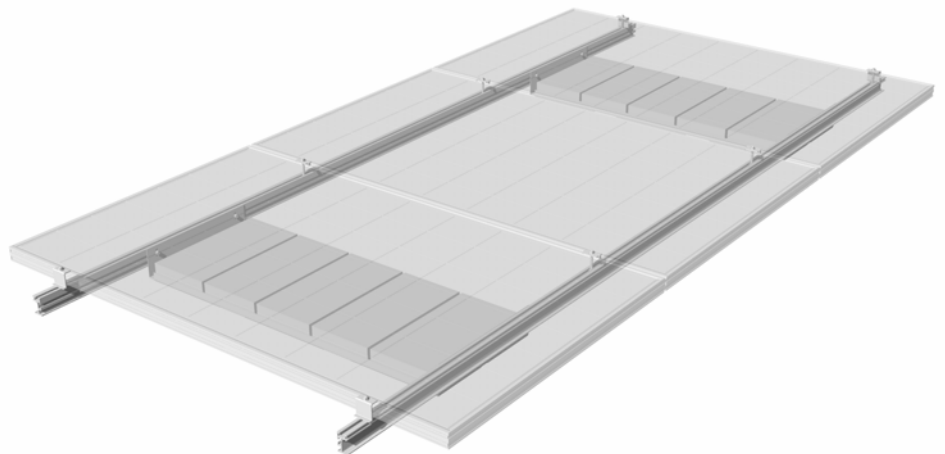
Design and Application Flexibility

Specifying Engineers and Architects require a mounting system that offers flexibility in design and application while exceeding building code requirements.

- Designs up to 150 mph
- Configurable around roof obstacles
- Compatible with most framed modules
- Penetration options for seismic regions or reducing ballast loads
- Slotted Ballast Pans for adjustment over roof undulations



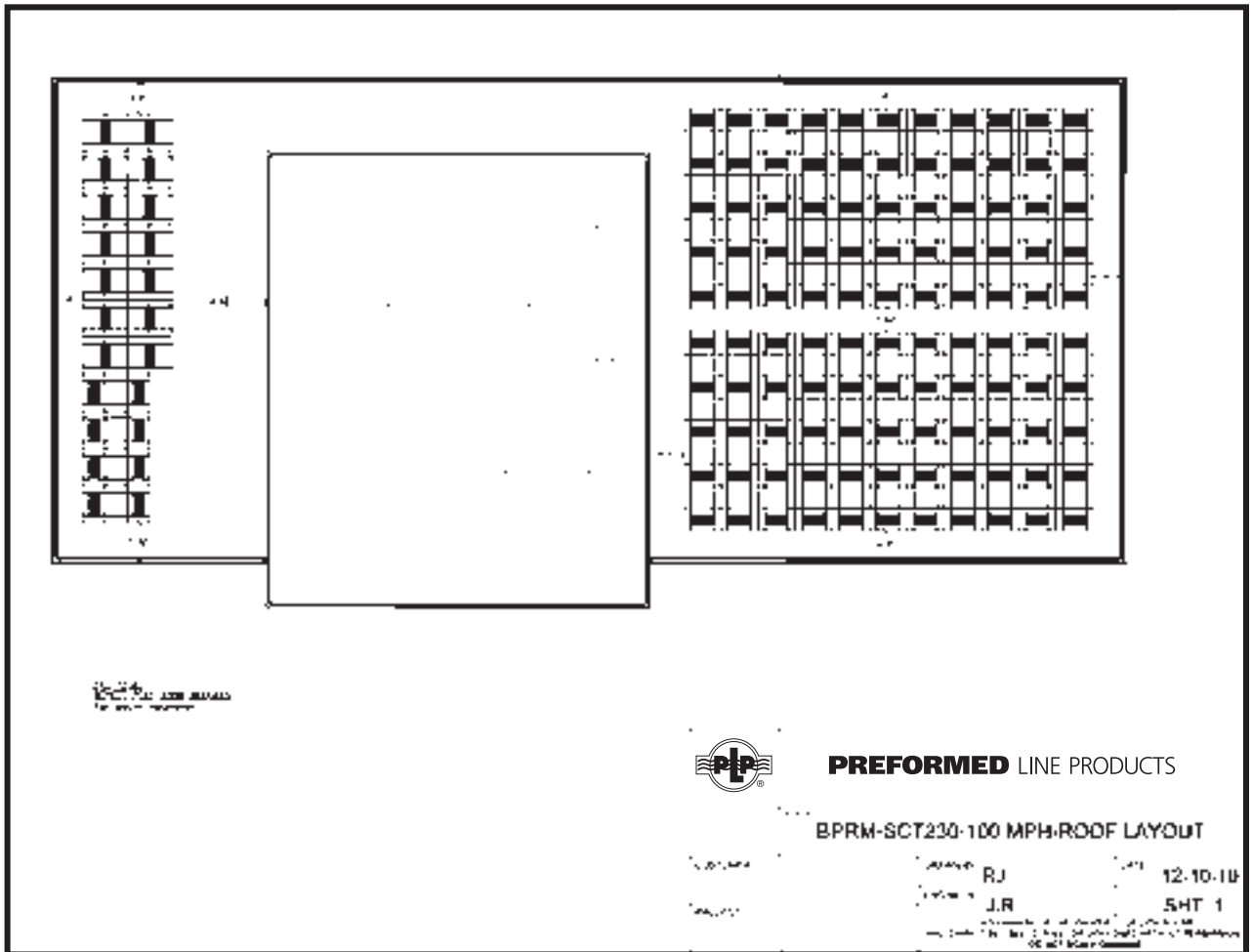
Ballasted – No penetrations



Configurable around roof obstructions

Our engineering staff is available to assist with your next project. Please provide module type, design wind speed, exposure category and building roof layout and height information.

Sample Roof Layout



The Ballasted Power Rail™ System is adaptable to any roof layout.



PREFORMED
LINE PRODUCTS

Albuquerque Office
1700 Louisiana Blvd., Suite 130
Albuquerque, NM 87110 USA

Corporate Headquarters
660 Beta Drive
Cleveland, Ohio 44143 USA

Telephone: 800.260.3792
Fax: 505.881.0933
Web Site: www.preformed.com
E-mail: info@plpsolar.com

© 2017 Preformed Line Products
Printed in U.S.A.
SL-SS-1085-5
06.17.IH

