

# Power Peak<sup>TM</sup> Selection Guide

Large Scale Ground Mount Systems



# Power Peak™ Solutions and Applications



## Power Peak™ AL

**Lightweight Aluminum Components**  
**Adjusts to Rolling Terrain,**  
**Preassembly Speeds Installation**

Preformed Line Products Power Peak AL system features preassembled strong backs, attachments and module clamps for faster build rates and fewer parts on site. The Aluminum rails adapt to rolling terrain, and provide wire management, and the patented RAD™ bolt speeds up PV module installations.



## Power Peak™ GS

**High Strength Galvanized Steel Construction**  
**Longer Spans, Fewer Verticals**

The Power Peak GS features stronger galvanized purlins with a unique overlapping feature that eliminates field splices and requires fewer fasteners. Preassembled clamps that attach anywhere along the purlins provide faster build rates and reduce the number of parts on site.



## Power Peak™ GSC

**C Channel Vertical**  
**Fewer Attachment Components,**  
**Lighter Weight Verticals**

The Power Peak GSC features a galvanized “C” channel vertical resulting in a reduced number of attachment components and bolts. Adjustment slots are designed to provide faster installation rates and quicker squaring of the rack on site.



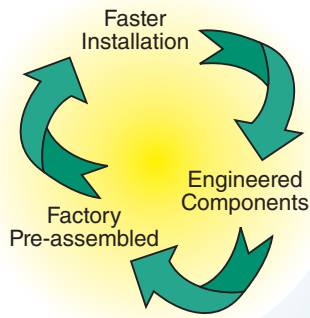
# Power Peak™ Solutions and Applications



## Power Peak™ GSH

### Hybrid Construction Adjusts to Rolling Terrain

The Power Peak GSH is a hybrid construction of aluminum rails and galvanized steel strong backs to maximize strength and adapt to rolling terrain. Preassembled brackets are designed to quickly locate and secure module rails for a faster installation requiring less adjustments.



### Recommended Product Solution

	AL	GS	GSC	GSH
Preassembled Components	✓	✓	✓	✓
Pile Driven or Concrete Foundation	✓	✓	✓	✓
Corrosive Environment	✓			
Lighter Weight Components	✓			✓
Rolling Terrain	✓			✓
Longer Spans, Fewer Verticals		✓	✓	
Top Clamping	✓			✓
Bottom Clamping		✓	✓	

# Power Peak™ Advantages



## Superior Design/Engineering

- UL2703 certified
- Integrated grounding
- Wind tunnel tested
- Site optimized designs
- Field adjustment features
- Preassembled and Fewer Parts
- Integrated wire management



## Value Added Services

- 20 year warranty
- Multiple manufacturing sites for uninterrupted supply
- Project manager
- On-site engineering support and installer training
- Pile driving, racking and module placement installation

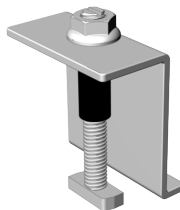


## High Strength/Reliable Materials

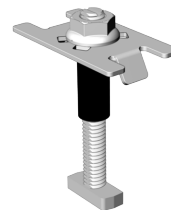
- 6000 Series structural aluminum rails (AL) (GSH)
- G90 galvanized “C” and “Z” profiles (GS) (GSC)
- Stainless steel module clamps and hardware
- Galvanized attachments and hardware
- ASTM A123 galvanized H-Beams

## Preassembled Clamps (patent pending)

### Power Peak AL and GSH Clamps

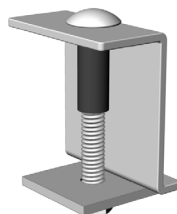


End Clamp Assembly



Mid Clamp Assembly

### Power Peak GS and GSC Clamps



End Clamp Assembly



Mid Clamp Assembly



**PREFORMED**  
LINE PRODUCTS

Albuquerque Office  
1700 Louisiana Blvd., Suite 130  
Albuquerque, NM 87110 USA

Corporate Headquarters  
660 Beta Drive  
Cleveland, Ohio 44143 USA

Telephone: 800.260.3792

Fax: 505.881.0933

Web Site: [www.preformed.com](http://www.preformed.com)

E-mail: [info@plpsolar.com](mailto:info@plpsolar.com)

© 2017 Preformed Line Products  
Printed in U.S.A.  
SL-ML-1225  
07.17.IH

