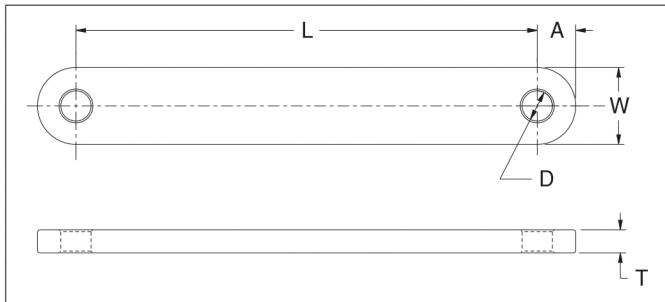


Extension Strap



Features

Body	Forged steel, hot dip galvanized
------	----------------------------------



Catalog Number*	General Dimensions – inches (mm)					Ultimate Strength (lbs)	Vertical Ultimate Strength lbf (kN)
	A	D	L	W	T		
ES-30-L	1 (25.4)	7/8 (22)	TBD	2 (50.8)	3/4 (19.1)	30,000 (133)	30,000 (133)
ES-50-L	1-1/4 (31.8)	31/32 (25)	TBD	2-1/4 (63.5)	3/4 (19.1)	50,000 (222)	50,000 (222)

*L = Length in inches. Example L = 18, BEL-30-18.