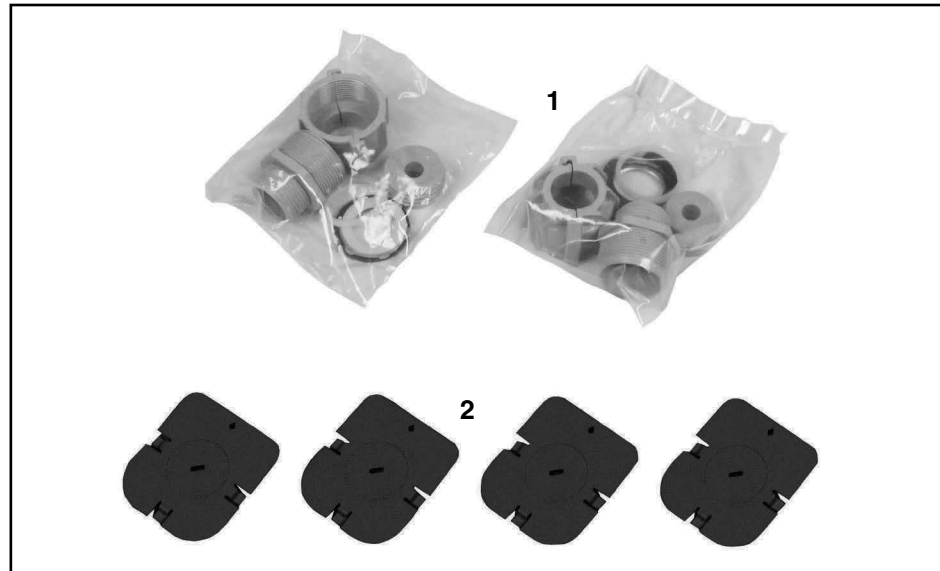


## Rodent Guard for COYOTE® Axxess Solutions™ Cabinets

Be sure to read and completely understand this procedure before applying product. Be sure to select the proper PREFORMED™ product before application.



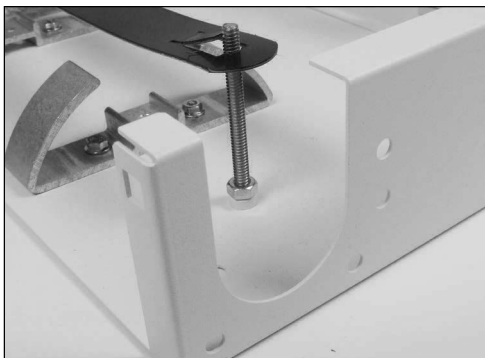
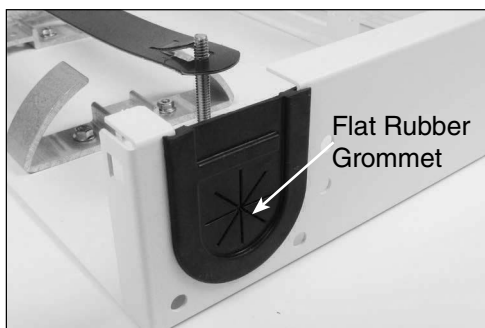
### RODENT GUARD KIT NOMENCLATURE

1. Grommet Port Adapter (2)

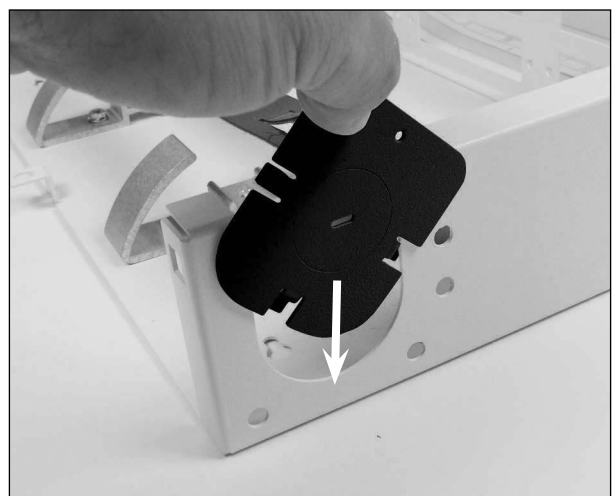
2. Rodent Guard Plates (4)

### Cable Port Removal

**Step #1** Remove the flat rubber grommet from the cable entrance port.



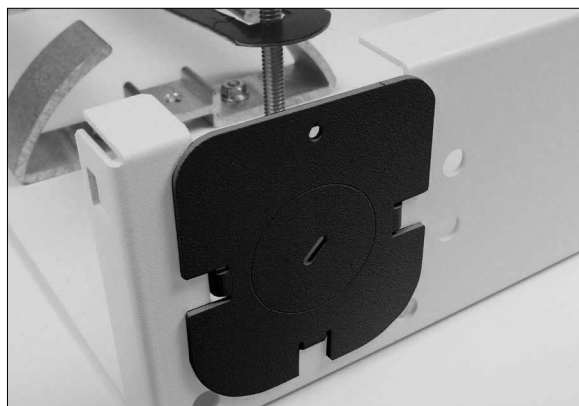
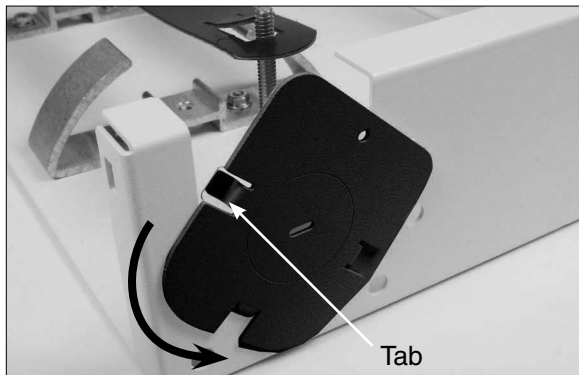
**Step #2** Slide the rodent guard plate down into the cable port at an angle as shown below.



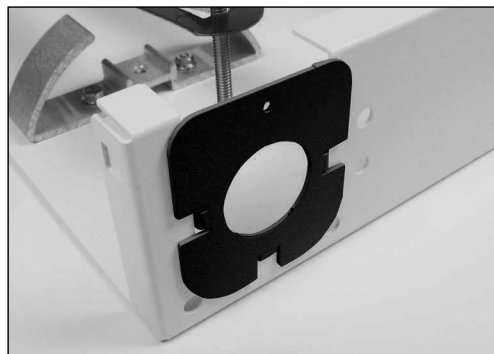
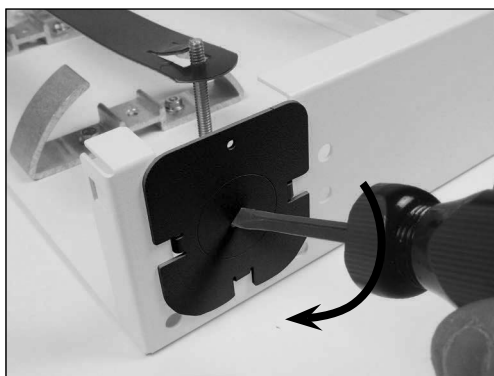
**COYOTE Access Solutions™ Cabinets & Rodent Protection Kits**

<b>Catalog #</b>	<b>Description</b>	<b>Product Code</b>
<b>WDC2A</b>	Wall Mount Cabinet, Almond, up to 24 Fibers	<b>7500351</b>
<b>WDC2B</b>	Wall Mount Cabinet, Black, up to 24 Fibers	<b>7500352</b>
<b>80812784B</b>	Rodent Protection Kit for WDC2, quantity 1 per Cabinet (Max.# Port Adapters is 4)	<b>80812784B</b>
<b>WDC4A</b>	Wall Mount Cabinet, Almond, up to 48 Fibers	<b>7500353</b>
<b>WDC4B</b>	Wall Mount Cabinet, Black, up to 48 Fibers	<b>7500354</b>
<b>80812784B</b>	Rodent Protection Kit for WDC4, quantity 1 per Cabinet (Max.# Port Adapters is 4)	<b>80812784B</b>
<b>WDC8A</b>	Wall Mount Cabinet, Almond, up to 96 Fibers	<b>7500355</b>
<b>WDC8B</b>	Wall Mount Cabinet, Black, up to 96 Fibers	<b>7500356</b>
<b>80812785B</b>	Rodent Protection Kit for WDC8, quantity 1 per Cabinet (Max.# Port Adapters is 4)	<b>80812785B</b>
<b>S10115102</b>	Lock Set for Wall Mount Cabinets Inner Door with matching keys	<b>S10115102</b>
<b>RDC2A</b>	Rack Mount Cabinet, 1RU, Almond, up to 12 Fibers	<b>7500427</b>
<b>RDC2B</b>	Rack Mount Cabinet, 1RU, Black, up to 12 Fibers	<b>7500428</b>
	Rodent Protection Kit not available for RDC2	
<b>RDC3A</b>	Rack Mount Cabinet, 2RU, Almond, up to 36 Fibers	<b>7500359</b>
<b>RDC3B</b>	Rack Mount Cabinet, 2RU, Black, up to 36 Fibers	<b>7500360</b>
<b>800014149B</b>	Rodent Protection Kit for RDC3, quantity 1 per Cabinet (Max.# Port Adapters is 4)	<b>800014149B</b>
<b>RDC6A</b>	Rack Mount Cabinet, 2RU, Almond, up to 72 Fibers	<b>7500361</b>
<b>RDC6B</b>	Rack Mount Cabinet, 2RU, Black, up to 72 Fibers	<b>7500360</b>
<b>800014149B</b>	Rodent Protection Kit for RDC6, quantity 1 per Cabinet (Max.# Port Adapters is 4)	<b>800014149B</b>
<b>RDC12A</b>	Rack Mount Cabinet, 3RU, Almond, up to 144 Fibers	<b>7500363</b>
<b>RDC12B</b>	Rack Mount Cabinet, 3RU, Black, up to 144 Fibers	<b>7500364</b>
<b>800014150B</b>	Rodent Protection Kit for RDC12, quantity 1 per Cabinet (Max.# Port Adapters is 4)	<b>800014150B</b>
<b>RDC12XA</b>	Rack Mount Cabinet, 4RU, Almond, up to 144 Fibers	<b>7500525</b>
<b>80812789B</b>	Rodent Protection Kit for RDC12X, quantity 1 per Cabinet (Max.# Port Adapters is 4)	<b>80812789B</b>
<b>RDC24A</b>	Rack Mount Cabinet, 8RU, Almond, up to 288 Fibers	<b>7500365</b>
<b>RDC24B</b>	Rack Mount Cabinet, 8RU, Black, up to 288 Fibers	<b>7500366</b>
<b>80812786B</b>	Rodent Protection Kit for RDC24, quantity 1 per Cabinet (Max.# Port Adapters is 8)	<b>80812786B</b>
<b>8003825</b>	Port Adapter Kit, 1 Hole, .825 - 1.0"	<b>8003825</b>
<b>8003826</b>	Port Adapter Kit, 1 Hole, .60 - .825"	<b>8003826</b>
<b>8003827</b>	Port Adapter Kit, 1 Hole, .40 - .60"	<b>8003827</b>
<b>8003828</b>	Port Adapter Kit, 2 Hole, .275 - .50"	<b>8003828</b>
<b>8003812</b>	Port Adapter Kit, 4 Hole, .12 - .275"	<b>8003812</b>
<b>8003818</b>	Port Adapter Kit, 8 Hole, .12 - .20"	<b>8003818</b>

**Step #3** Rotate the rodent guard plate to engage the tabs of the plate in the side of the cable port.

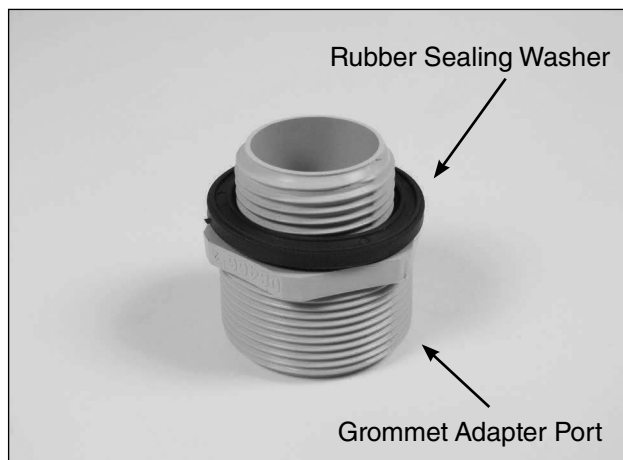


**Step #4** Insert a flat head screwdriver into the slot in rodent guard plate and bend to break out the knockout port.

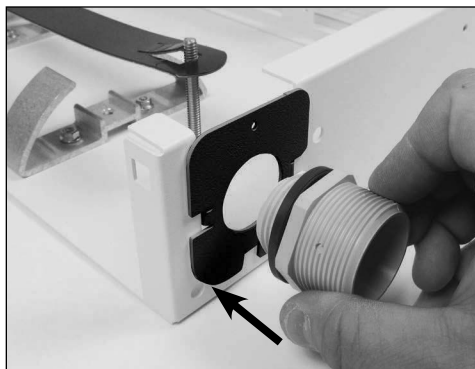


## Grommet Adapter Port / Cable Installation

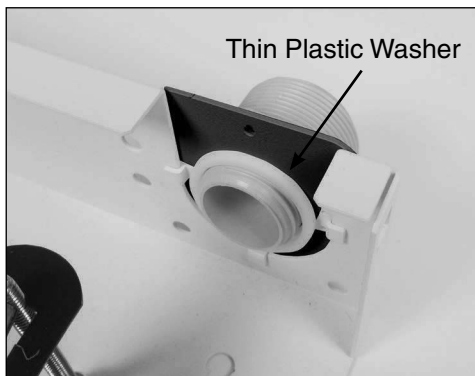
**Step #5** Install the rubber sealing washer on the grommet adapter port as shown below.



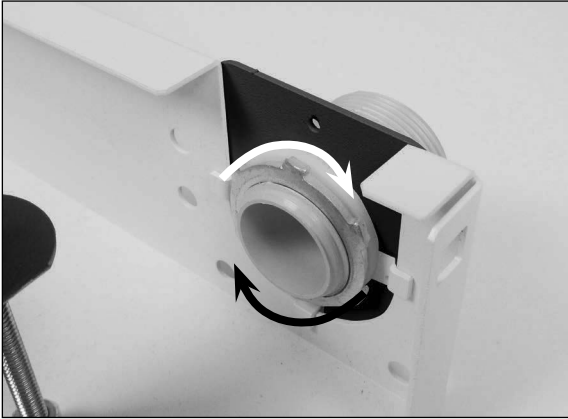
**Step #6** Insert the grommet adapter port into the cable port hole.



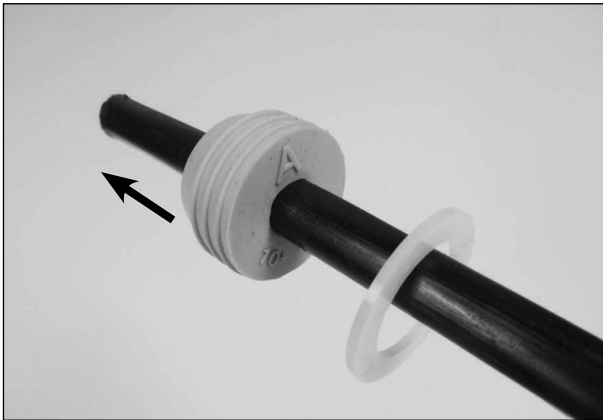
**Step #7** Place the thin plastic washer on the grommet adapter port on the inside of the cabinet.



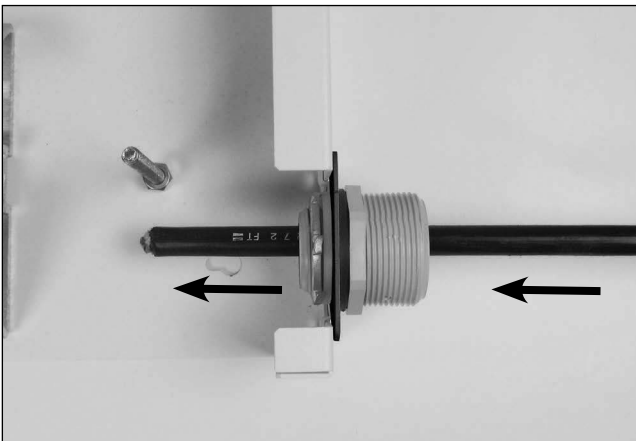
**Step #8** Install the metal nut on the grommet adapter port to secure.



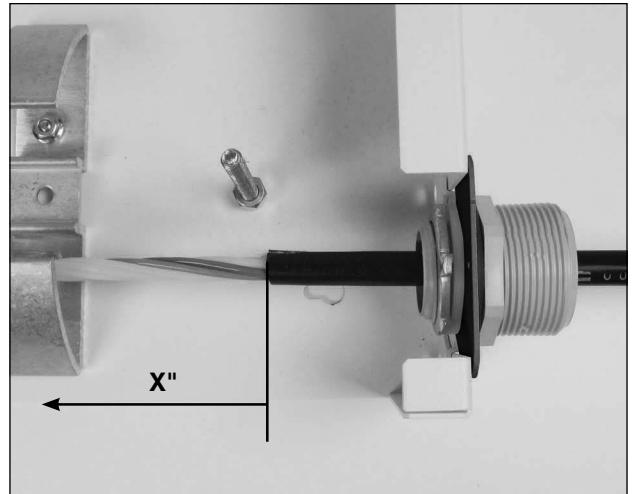
**Step #9** Install the thick plastic washer and grommet on cable as shown below. Push the cable through the washer and grommet so that roughly 8ft of cable has passed through the grommet.



**Step #10** Insert the cable through the grommet adapter port.



**Step #11** Remove the cable sheath.

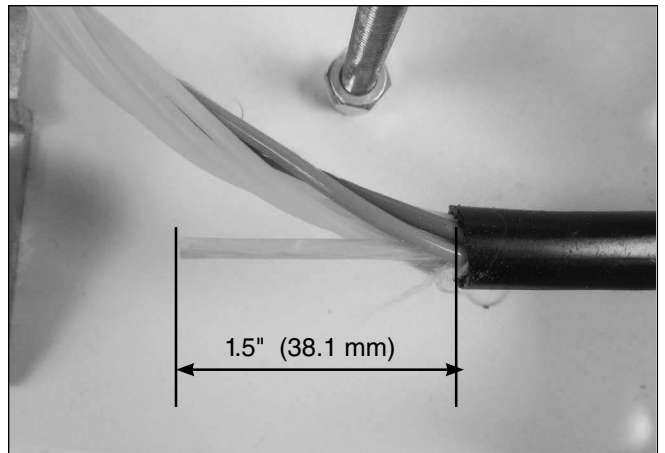


**X" = Minimum Sheath Opening for Cut Cable**

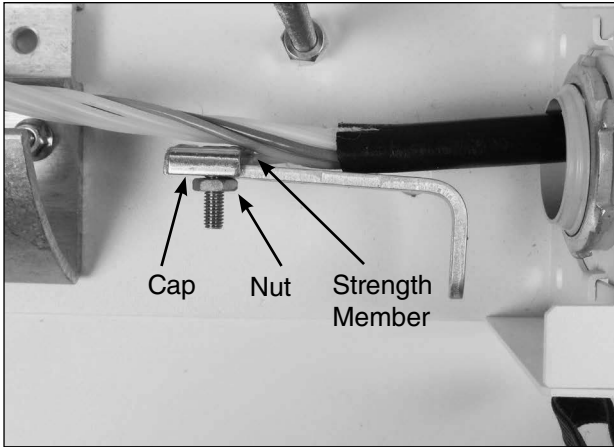
Rack Mount Cabinets	Min. of 90" (2.3 m)
Wall Mount Cabinets (For 12 and 24 Fibers)	WDC2 = Min of 80" (2.0 m) WDC4 = Min of 100" (2.5m)
Wall Mount Cabinets (Up to 96 Fibers)	Min of 90" (2.3 m)
Wall Mount Cabinets (Up to 144 Fibers)	Min of 110" (2.8 m)

**PLP Tip:** Leave about 8" (203 mm) of strength member to trim later.

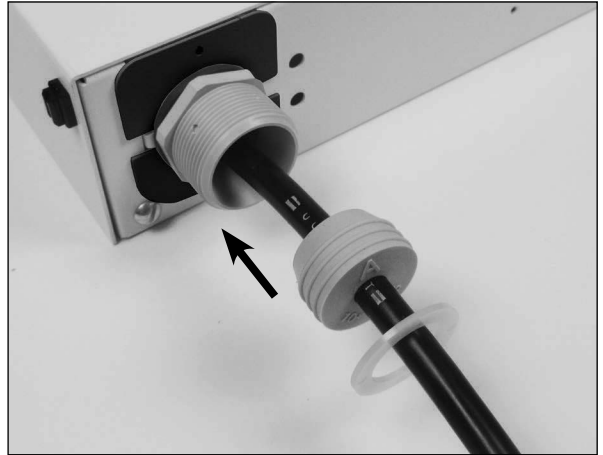
**Step #12** Trim strength member of cable as shown below.



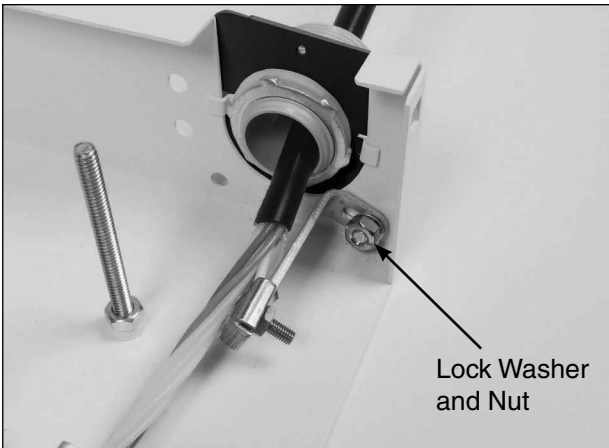
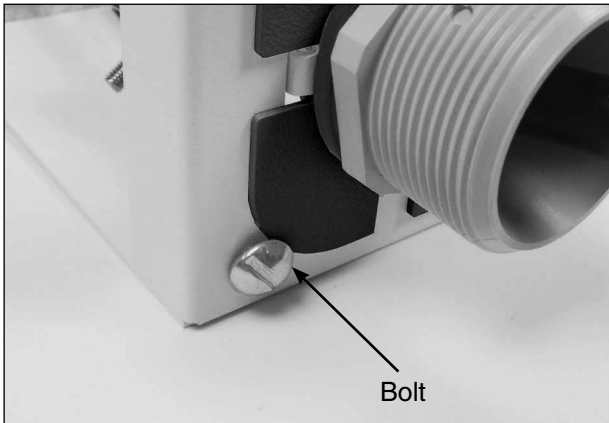
**Step #13** Position the strength member of the cable under the cap of the strength member bracket and tighten the nut to secure the strength member.



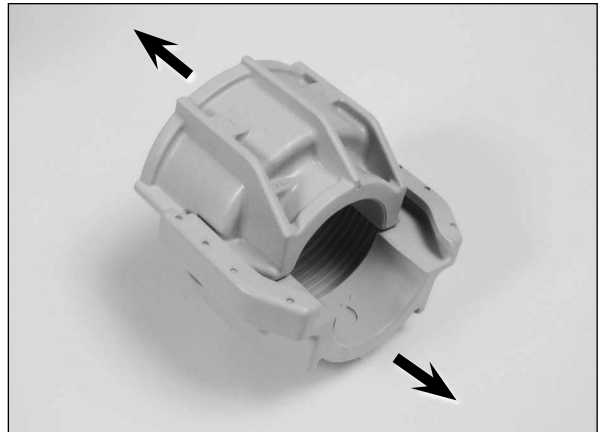
**Step #15** Slide the grommet and the plastic washer over the cable and insert the grommet into the grommet adapter port.



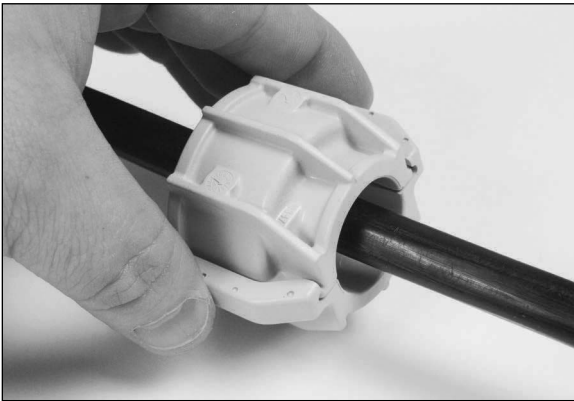
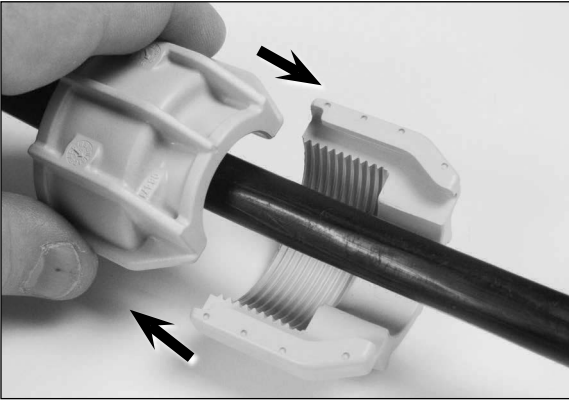
**Step #14** Secure the strength member bracket to the cabinet with the bolt, lock washer, and nut as shown below.



**Step #16** Slide the adapter port nut halves apart as shown below.



**Step #17** Position the adapter port nut halves around the cable and slide the halves together.



**Step #18** Install the adapter port nut on the grommet adapter port to secure the cable.





### **SAFETY CONSIDERATIONS**

This application procedure is not intended to supersede any company construction or safety standards. This procedure is offered only to illustrate safe application for the individual.

**FAILURE TO FOLLOW THESE PROCEDURES MAY RESULT IN PERSONAL INJURY OR DEATH.**

**Do not modify this product under any circumstances.**

This product is intended for use by trained technicians only. **This product should not be used by anyone who is not familiar with, and not trained to use it.**

When working in the area of energized lines, extra care should be taken to prevent accidental electrical contact.

For proper performance and personal safety, be sure to select the proper size PREFORMED™ product before application.

PREFORMED products are precision devices. To insure proper performance, they should be stored in cartons under cover and handled carefully.



## **PREFORMED** LINE PRODUCTS

P.O. Box 91129, Cleveland, Ohio 44101 • 440.461.5200 • [www.preformed.com](http://www.preformed.com) • e-mail: [inquiries@preformed.com](mailto:inquiries@preformed.com)

**SP3394**