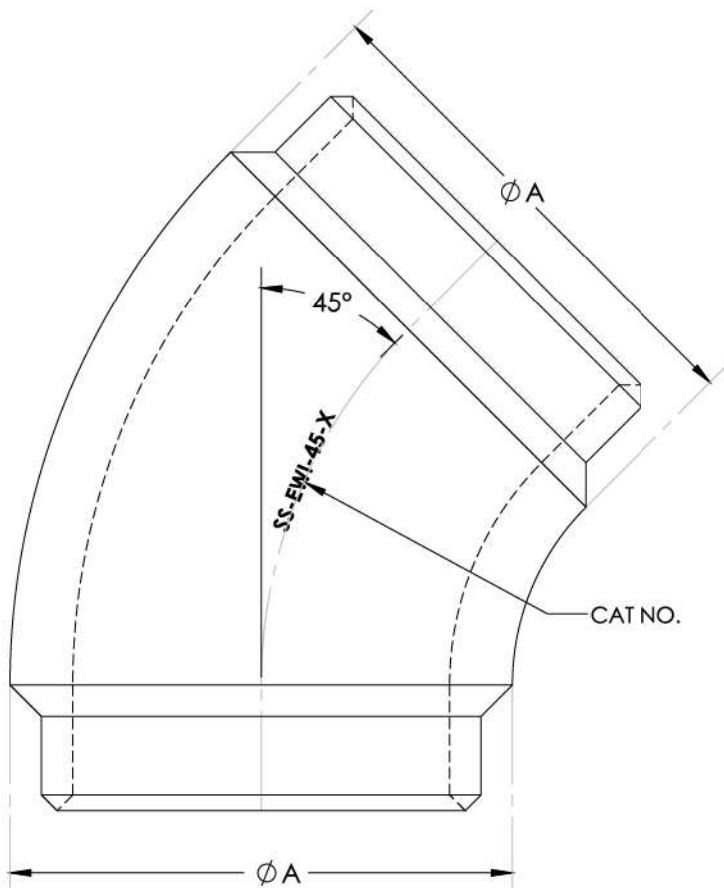


TBWI-45



NOTES:

- To connect a two busbars (welded Type).
- Material: Cast aluminium.
- Cat No. to be stamped in location shown.
- Welded areas to be cleaned with a stainless steel wire brush before welding.
- Supplied in a clear, sealed, heavy duty, UV stabilized plastic bag.

ESKOM CODE	PLP CATALOGUE NO.	TUBE DIAM. (A) mm	MINIMUM RATED CURRENT @ 90°C	MAXIMUM VOLTAGE kV rms	WEIGHT kg
EWI-45-A	TBWI-80-45	80	2000	145	1.35
EWI-45-C	TBWI-120-45	120	3150	145	2.50
EWI-45-F	TBWI-200-45	200	4000	800	8.80
EWI-45-G	TBWI-250-45	250	4000	800	19.30