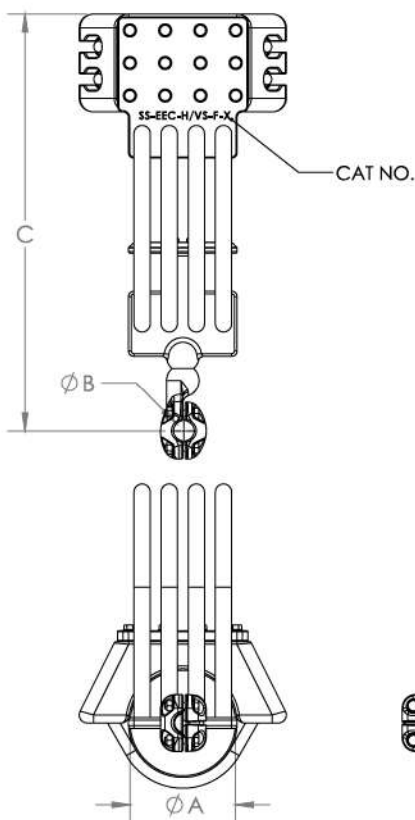


TBHXS



NOTES:

- To connect a busbar to solid stem (expansion connection).
- Material: Fasteners for:
Tube diam. 80-120mm
Stainless steel Gr. A4.
Tube Diam. 150-250mm.
Gr 8.8 HDG
Components are cast aluminium.
- Bolt torque values:
M10 (St steel) 35Nm
M12 (St steel) 60Nm
M20 (HDG) 90Nm
M24 (HDG) 130 Nm
- Cat No. to be stamped in location shown.
- All bolted joint clamp and conductor/busbar surfaces to be cleaned with a stainless steel wire brush and a suitable conductive grease applied before use.
- Supplied in a clear, sealed, heavy duty, UV stabilized plastic bag.
- Supplied with a static discharge strap.

ESKOM CODE	PLP CATALOGUE NO.	TUBE DIAM. (A) mm	STEM DIAM. (B) mm	(C) mm	(D) mm	MINIMUM	MAXIMUM	WEIGHT kg
						RATED CURRENT @ 90°C	VOLTAGE kV rms	
EEC-HVS-F-E	TBHXS-200-38	200	38	820	520	2500	800	27.6
EEC-HVS-F-F	TBHXS-200-60	200	60	880	520	3150	800	28.9
EEC-HVS-F-G	TBHXS-250-38	250	38	870	550	2500	800	28.9
EEC-HVS-F-H	TBHXS-250-60	250	60	930	550	3150	800	30.1