

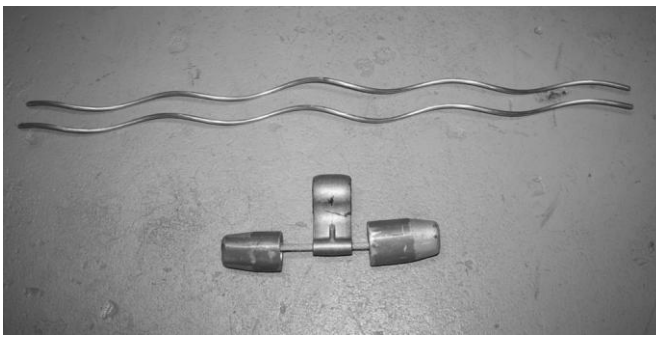


## FIBERLIGN® MULTI-RESPONSE DAMPER (MRSDD) ASSEMBLY.

**Be sure to read and completely understand this procedure before applying product. Be sure to select the proper PREFORMED product before application.**

### Step #1

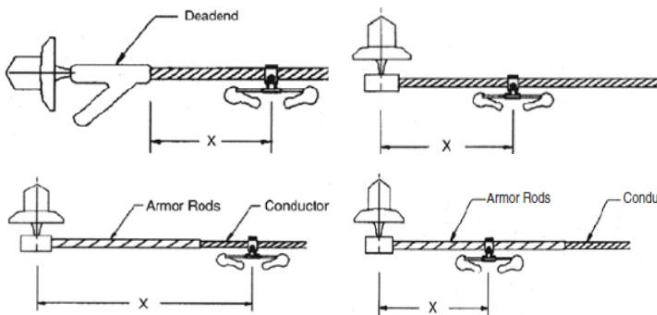
The FIBERLIGN® Multi-Response Damper is specifically designed for use on ADSS and OPGW and on small diameter aluminium-based power conductors, to control wind induced aeolian vibration.



### Step #2

To determine the recommended damper placements please refer to the Preformed Line Products catalogue or alternatively contact your local Preformed Line Products.

Below are some typical damper placement configurations:

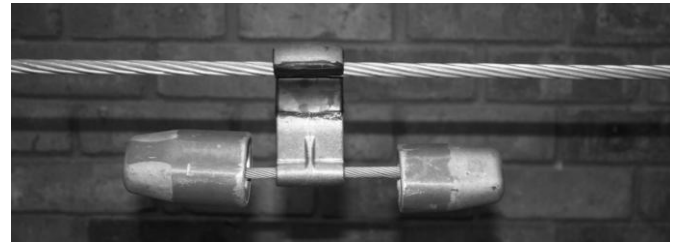


x = Placement Distance

### Step #3

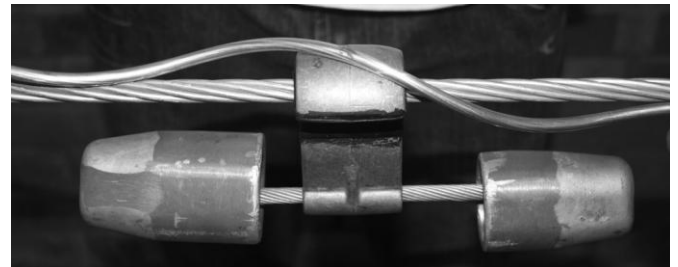
Using the placement recommendations provided by PLP, measure the appropriate distance from the suspension's centre line or from the end of the Dead-End.

Centre the damper at the appropriate distance.



### Step #4

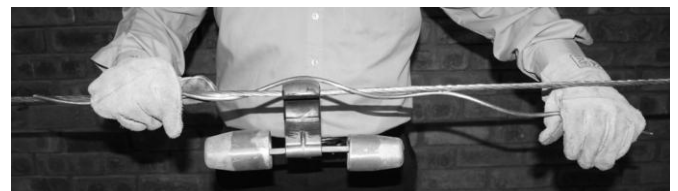
Align the centre colour mark of the helical attachment rod with the centre of the Multi-Response Damper attachment clamp.



### Step #5

Wrap the attachment rod around the conductor.

Snap the ends of the rods into place, no tools are required.





**Step #6**

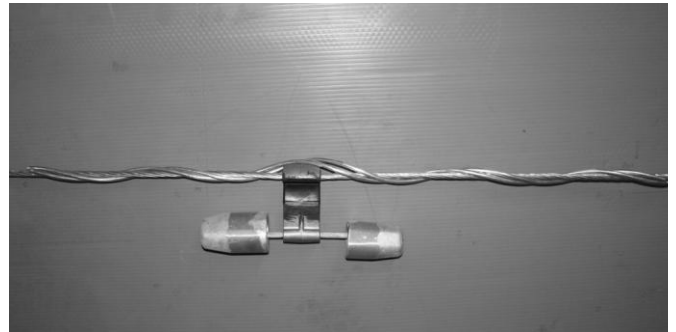
Apply the remaining attachment rods.

Ensure the colour marks of every helical attachment rod lines up with the centre of the Multi-Response Damper attachment clamp.



**Step #7**

Completed application of FIBERLIGN Multi-Response Damper.



**SAFETY CONSIDERATIONS**

This application procedure is not intended to supersede any company construction or safety standards. This procedure is offered only to illustrate safe application for the individual. **FAILURE TO FOLLOW THESE PROCEDURES MAY RESULT IN PERSONAL INJURY OR DEATH.**

**Do not modify this product under any circumstances.**

This product is intended for use by trained technicians only. **This product should not be used by anyone who is not familiar with, and not trained to use it.**

When working in the area of energized lines, extra care should be taken to prevent accidental electrical contact.

For proper performance and personal safety, be sure to select the proper size PREFORMED™ product before application.

PREFORMED products are precision devices. To insure proper performance, they should be stored in cartons under cover and handled carefully.

