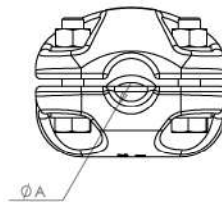
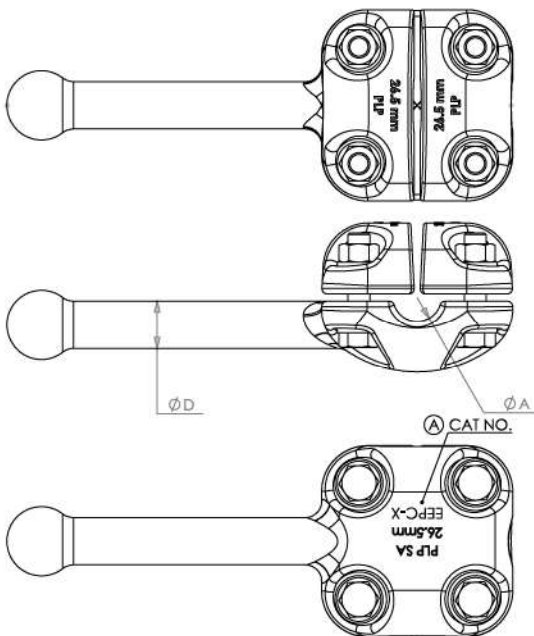


EEPC

EEPC clamps are used for connecting portable earthing to stranded conductors



NOTES:

- Bolted earthing peg clamps for making a bolted connection between single stranded conductor and earthing peg
- Fasteners M12 GR. 8.8 HDG. Torque to 45Nm.
- Cat No. should be stamped in location shown.
- All bolted clamps and conductors surfaces to be cleaned with a stainless steel wire brush and a suitable conductive grease applied before use.
- Material: Cast aluminium.
- Supplied in clear, sealed, heavy duty, UV stabilized plastic bag.

NEW TYPE DESIGNATION	CONDUCTOR DIAMETER (mm) (A)	CONDUCTOR DIAMETER (mm) (D)	RATED CURRENT [IN] (A RMS)	MAXIMUM VOLTAGE [UM] (KV RMS)
EEPC – A	26.5	26	900	300
EEPC – B	38.3	26	900	420
EEPC – C	16.3	26	900	145

- All clamps supplied with M12 HDG bolts, nuts and washers
- Recommended Torque: 45 Nm