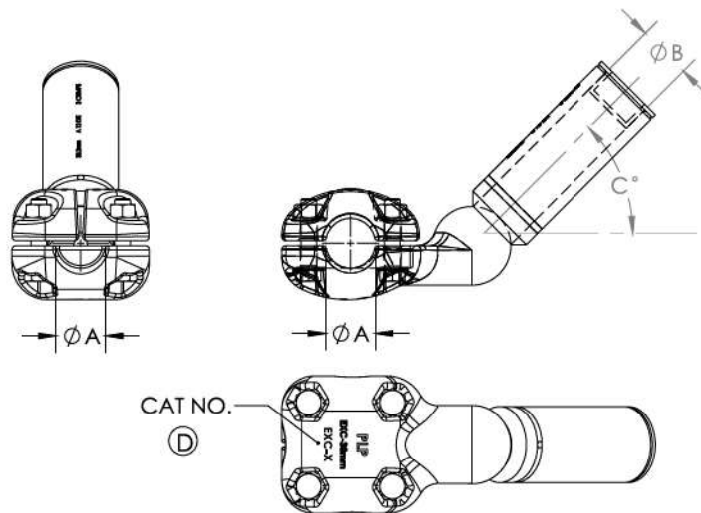


EXC

These bolted-compression clamps are designed for making connections between a solid terminal stem and a stranded conductor. The bolted end is intended for bolting to a solid stem, whilst the compression end is designed for crimping onto a stranded conductor. The bolted end is fitted with two independent clamping saddles.



NOTES:

- To connect a solid stem to a stranded conductor by bolting clamp to terminal stem and crimping conductor in compression tube.
- Fasteners M12 GR 8.8 HDG torque to 45Nm
- (D) Cat no. to be stamped in the location shown.
- Compression die and size stamped on tube. 3 crimps required.
- Tube is pre-greased with conductive grease and sealed with plastic cap.
- All terminal palm and conductor surfaces to be cleaned with stainless steel wire brush and a suitable conductive grease applied before use.
- Material: Cast and Extruded aluminium
- Supplied in clear, sealed, heavy duty, UV stabilized plastic bag.

NEW TYPE DESIGNATION	OLD TYPE DESIGNATION	EQUIPMENT TERMINAL (A)	CONDUCTOR DIAMETER (B) (mm)	ANGLE OF (C) OFFSET	RATED CURRENT [IN] (A rms)	MAXIMUM VOLTAGE [UM] (KV rms)
EXC – A	KC1	26	26.5	0°	833	300
EXC – B	KC2	38	26.5	0°	833	300
EXC – C	KC3	38	38.3	0°	1300	420
EXC – D	KC4	38	38.3	45°	1300	420
EXC – E	KC5	38	38.3	90°	1300	420
EXC – F	KC6	38	26.5	45°	833	300
EXC – G	KC7	38	26.5	90°	833	300
EXC – H	KC8	38	18.1	0°	470	245
EXC – J	KC9	35	26.5	0°	833	300
EXC – K	KC10	35	38.3	0°	1100	420
EXC – L	KC11	26	26.5	45°	833	300
EXC – M	KC12	26	18.1	0°	470	245
EXC – N	KC13	40	26.5	0°	833	300
EXC – P	KC14	60	38.3	0°	1300	420
EXC – Q	KC15	60	38.3	45°	1300	420
EXC – R	KC16	60	38.3	90°	1300	420

* Refer to [page SC – 24](#) for the die size for Alcan Compression Fittings

- All clamps supplied with M12 HDG, nuts and washers
- Recommended Torque: 45 Nm