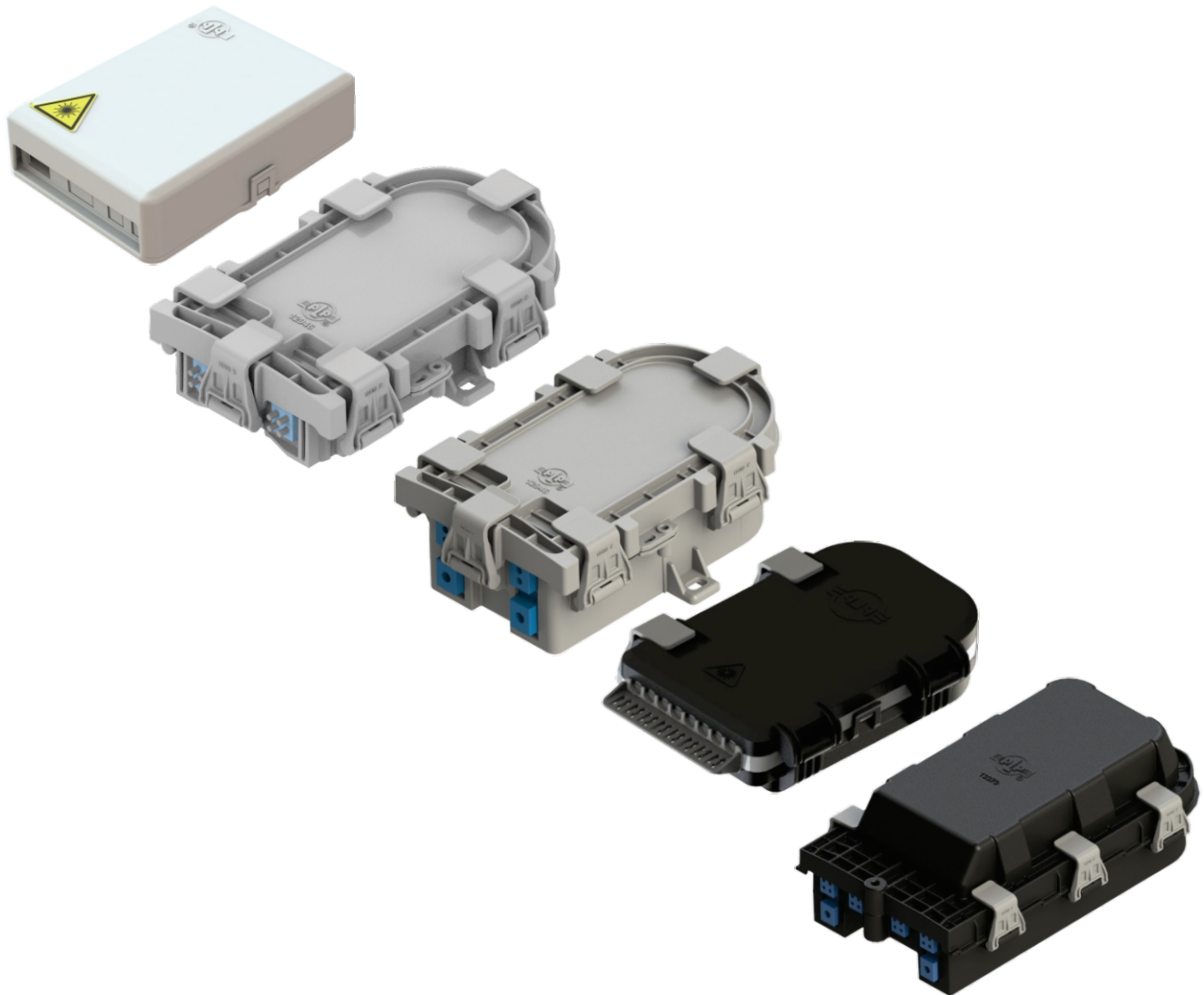




PRODUCT OVERVIEW



COYOTE® FIBER OPTIC SOLUTIONS

Fiber Optic Closures

STANDARD TERMS AND CONDITIONS OF BUSINESS

1. APPLICATION OF CONDITIONS

These terms and conditions shall govern, and control all offers and sales by PREFORMEDLINE PRODUCTS (SOUTH AFRICA) (PTY) LTD. (herein called "PLP"). Unless expressly accepted in writing signed at its head office in Pietermaritzburg by an authorised signatory, any qualification of these conditions in a customer's order or enquiry, or anything contrary to or conflicting with any of these conditions shall be treated as inapplicable and of no effect.

2. ACCEPTANCE

Any tender or quotation by PLP only applies for thirty days from date thereof; and no order shall bind PLP until the customer shall receive written confirmation thereof from PLP, duly signed on behalf of PLP.

3. PRICES

All prices are nett, F.O.R. Works at Pietermaritzburg and subject to change without notice. Value Added Tax (VAT) is not included and will be added-on where applicable.

4. FINANCIAL RESPONSIBILITY

The customer's financial responsibility is at all times subject to approval of PLP's credit department and PLP at any time may require payment in advance for a satisfactory security or guarantee that invoices will be paid promptly when due. If the customer fails to comply with any term of payment, PLP reserves the right to withhold further deliveries or to terminate the agreement and any unpaid amount thereupon shall become due immediately.

5. TERMS OF PAYMENT

Unless otherwise specifically agreed between PLP and the customer in writing, The customer shall pay PLP immediately on presentation of an invoice before delivery, without deduction or set-off, and payments shall not be withheld or deferred on the basis of any claims as alleged by the customer against PLP.

6. DELIVERY

The PLP will use its best endeavours to deliver the products by the time fixed for delivery, but if from any cause other than the wilful default of PLP delivery is delayed, PLP will not be responsible for any loss or damage thereby caused to the customer. Failure of one delivery shall not vitiate the contract as to others. No responsibility is accepted for delays due to loss in manufacturing or for damage and/or other delays due to Act of God, War, Fire, Civil Commotion, Accidents, and for other causes beyond PLP's control. Offers of delivery from stock are subject to the fitting being unsold on receipt of order.

7. DELIVERY CHARGES

Unless otherwise agreed in writing or stated in the confirmation of the order, delivery charges are for the customer's account.

8. WARRANTY

PLP warrants that all products manufactured and /or supplied by PLP are free from defects in material and workmanship under normal and proper usage for a period of one year from the date of delivery. Products must be installed and maintained to PLP's recommended procedures, and subject to the provisions of clause 9 below that in the event of breach of this warranty, PLP's liability will be limited to the freer replacement only of the products provided such defect is proved to be directly attributable to defective materials or workmanship and subject to a claim being received by PLP in writing within 14 (Fourteen) days of such defect. This warranty is exclusive and in lieu of all other warranties, whether express, implied or otherwise arising by operation of law, trade, or course of dealing. In addition, the remedies set forth herein are the sole and exclusive remedies. PLP shall not be liable for any consequential or incidental damages of any kind.

9. LIABILITY

The liability of PLP for any loss or damage, including special, general, direct or consequential, in respect of any claim arising out of any contract entered into with a customer in connection with the manufacture and /or the sale and/or the supply and/or the delivery of our products, whether such claim shall be for breach of any statutory duty or for any delict (including the negligence of our employees or servants) shall not exceed the sale price of the relevant products sold to the customer. In addition, under no circumstance will PLP be liable for any costs associated with fires and wildfires including costs for clean-up efforts.

10. PACKING

All goods are packed in PLP's standard corrugated cartons, wooden crates and/or suitable alternatives at PLP's discretion.

11. LOSS OR DAMAGE IN TRANSIT

PLP is not responsible for this risk. In the case where PLP has accepted transit risk in terms of clause 1 of these conditions, transit loss or damage must be reported by the customer or consignee immediately in writing to the carrier, and also to PLP. Documentary evidence, as prescribed by the CARRIERS must be given by the consignee to PLP within seven days of receipt of the consignment in question.

12. TESTING AND INSPECTION

When testing and inspection is specified by customers and agreed to by PLP, PLP shall test/inspect at its Works in a suitable area designated by PLP.

13. DEVIATION IN QUANTITIES MANUFACTURED

Products manufactured are subject to a deviation of plus minus 10% in quantity.

14. STANDARD PACKS

PLP reserves the right to supply in increments its standard packs.

15. CANCELLATION

The customer shall not be entitled to cancel or repudiate any order or refuse to accept delivery of any order and/or claim damages or set-off as a consequence of late or short delivery.

STANDARD TERMS AND CONDITIONS OF BUSINESS

16. RETURNS

No product shall be returned without PLP's prior written authorization. Only non-obsolete standard items in original cartons may be returned. Carriage must be prepaid. Requests for return must be instituted within 90 days of original delivery and returns will be subject to factory inspection before acceptance and credit authorization. PLP reserves the right to apply a minimum servicing charge of 10% of the invoice amount..

17. SPECIFICATIONS

PLP reserves the right to change specifications without prior notice.

18. OWNERSHIP AND RISK

Notwithstanding the delivery of any product to a customer, ownership of the product shall not pass to the customer until PLP has received payment in full of the contract price of the said product. Risk in the product shall pass to the customer on delivery.

19. COSTS

Should PLP incur legal costs regarding litigation with the customer or for the collection of any amount due by the customer, the customer shall pay such costs on the attorney-and-client scale as well as collection costs calculated at 10% (TEN PERCENT) of each and every payment made.

20. CONFIDENTIALITY

The customer agrees that all information furnished by or obtained from PLP in connection with the sale of goods hereunder will be confidential, and the Buyer agrees not to disclose any such information to any other person, or use such information for any purpose, other than performing this contract.

21. MISCELLANEOUS

The failure of either party to insist upon performance of any term or condition herein or to exercise any right or privilege shall not thereafter waive the future performance of such term, condition, right of privilege or of any other terms, conditions, rights or privileges, whether of the same or similar type. The rights herein and the construction of these Terms and Conditions shall be governed by the laws of the Republic of South Africa, without giving effect to principles of conflict of laws, invalid or unenforceable, the remaining provisions shall not be affected thereby, but shall remain in full force and effect. The paragraph headings herein are solely for the convenience of and reference by the parties and do not constitute any part of these Terms and Conditions. The customer may not assign its rights or delegate its obligations hereunder without PLP's prior written consent.

22. FOREIGN LAW

Save for these terms and conditions being governed by the laws of the Republic of South Africa, PLP complies with the Foreign Corrupt Practices Act (FCPA) Customer agrees that it will comply with all relevant laws, and will comply with all laws regarding bribery including, but not limited to, FCPA.

23. PATENT

PLP shall defend the customer against any claim of infringement and shall pay any resulting damages finally awarded, provided that (a) the customer promptly notifies PLP in writing of any claim, and (b) PLP has sole control of the defence and all related settlement negotiations. This obligation does not apply to claims arising out of combinations of goods with goods provided by others, or to claims resulting from compliance of goods with the customer's design or specifications, or which the customer assumes and shall hold PLP harmless for any claims thereof.

ABOUT PLP

PLP's line of COYOTE® fiber optic closures, cabinets, demarcation units, accessories and connectivity solutions trace their roots back to 1995 with the launch of the very first COYOTE Closure. Shortly thereafter, the product line expanded beyond the original closure to include smaller fiber count products, such as the COYOTE PUP and RUNT. Then, through additional field feedback, research, engineering, and development came a whole new breed of fiber optic closures – PLP's second generation of COYOTE products.





SALES CONTACTS



**TELECOMMUNICATIONS SOLUTIONS
SALES**

CUSTOMER SUPPORT

**PLP SOUTH AFRICA CUSTOMER & TECHNICAL
SUPPORT**

Tel: 033 397 5800

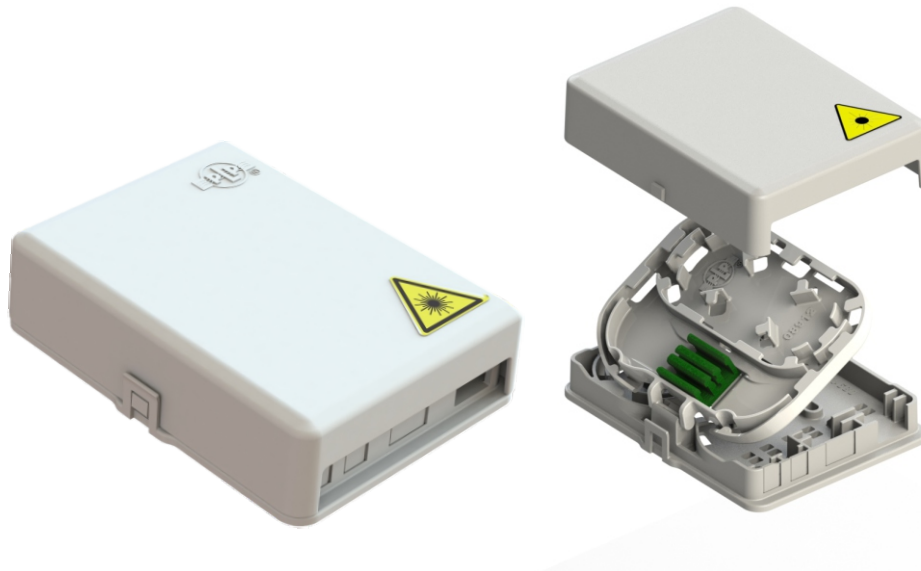
Fax: 033 387 7094

Email: sales.sa@plp.com

CONTENTS

COYOTE® FIBER OPTIC SOLUTIONS

COYOTE® FTP	6
COYOTE® STP-JR	7
COYOTE® STP-MD	8
COYOTE® MDC	9
COYOTE® STP-L	10
ACCESSORIES	11

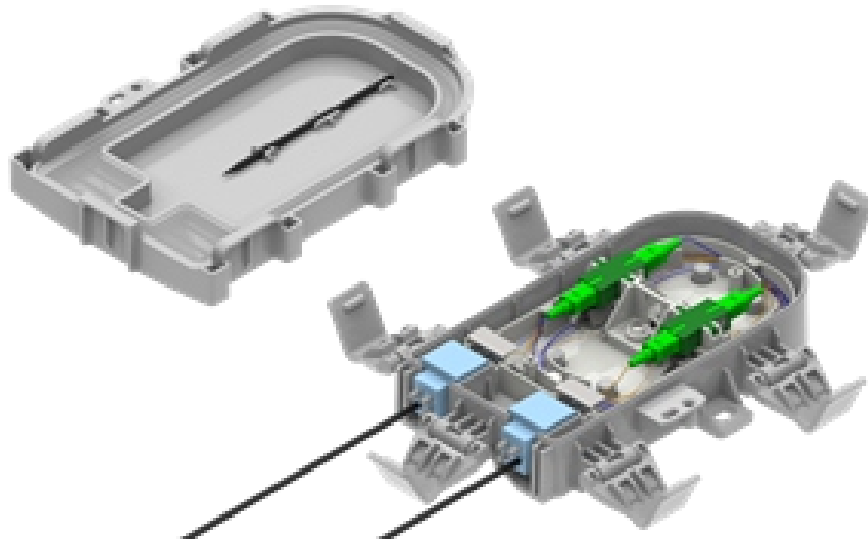


COYOTE® FTP

The **COYOTE® FTP -FIBER OPTIC TERMINATION POINT** is a compact wall organizer for protecting and accommodating internal fiber optic splices in homes, offices or apartments. FTP is easily installed on walls without the use of special tools, The COYOTE® FTP solution is manufactured in accordance with ISO 9001: 2015 Quality Procedures to ensure excellent quality and is backed by the unparalleled customer and field experience carried by PLP since 1974.

FEATURES AND BENEFITS

- 2 Fiber Splice
- Multiple entry points(rear included)
- 2 Connectors
- Secure Fiber Storage
- Robust engineering construction
- Ease of installation

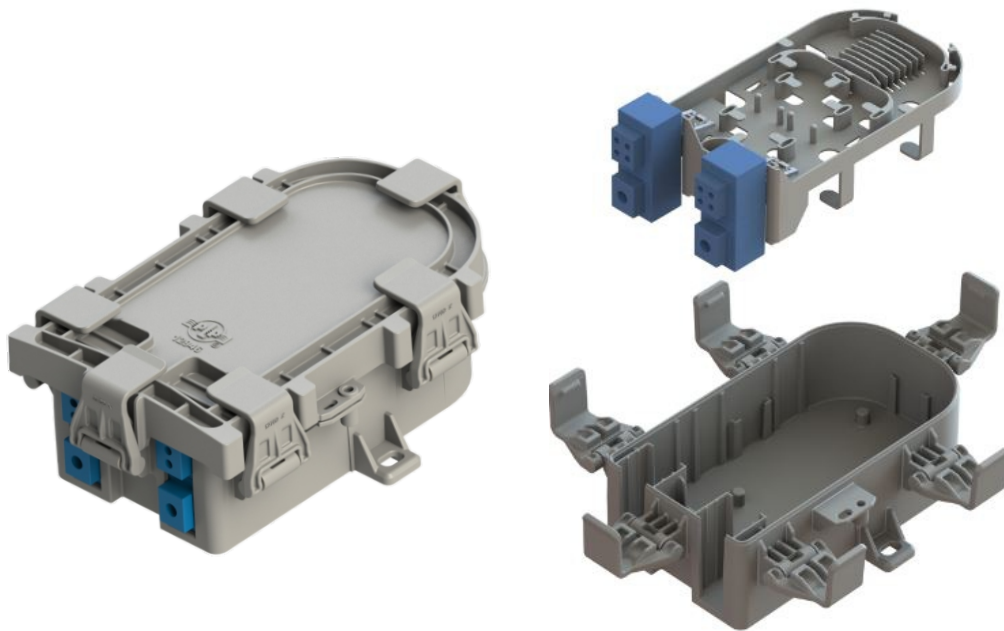


COYOTE® STP-JR

The **STP-JR (Service Termination Point)** is a small scale, cost effective closure which provides an alternative to traditional network interface devices, while offering much greater application flexibility. The robust latch system, paired with an integrated overmoulded cover, allows for quick re-entry and creates a secure seal over a wide range of cable profiles.

FEATURES AND BENEFITS

- Dimensions: 200 x 125 x 49mm
- Application: Indoor/Outdoor Premises, Pedestal Wall/Pole Network Interface Device (NID)
- Degree of Protection: IP-68
- Material Construction: Rugged UV Stabilized Flame Retardant Material (UL94-5VA Rated)
- Max Splice Capacity: 12 Single Fusion, 4 Mechanical
- Max Adapter Quantity: 2 Simplex SC, 2 Duplex LC
- Grommet Quantity: 2 (Multi-Hole Grommets Available)
- Aerial- Underground Application
- 12 Fiber Splice Capacity
- Ease of Installation

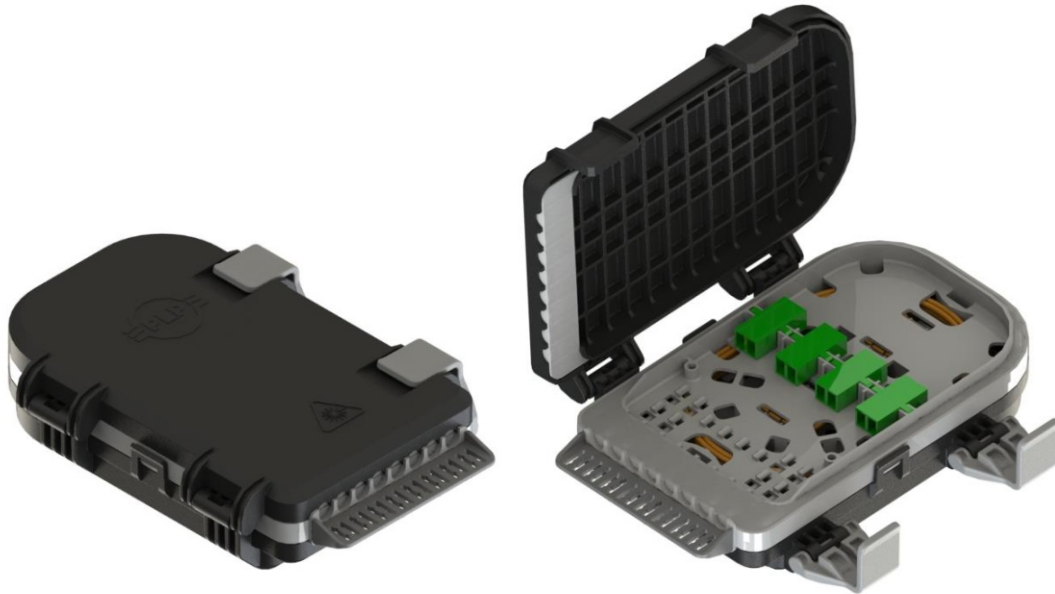


COYOTE® STP-MD

The **STP-MD (Service Termination Point-Medium)** is a small scale, cost effective closure which provides an alternative to traditional network interface devices, while offering much greater application flexibility. The robust latch system, paired with an integrated overmoulded cover, allows for quick re-entry and creates a secure seal over a wide range of cable profiles.

FEATURES AND BENEFITS

- Dimensions: 200 x 125 x 70mm)
- Application: Indoor/Outdoor Premises, Pedestal Wall/Pole Network Interface Device (NID)
- Degree of Protection: IP-68, 100% water proof
- Material Construction: Rugged UV Stabilized Flame Retardant Material (UL94-5VA Rated)
- Max Splice Capacity: 24, if splitter installed splice count drops to 21 single fusion splices.
- Max Adapter Quantity: 4 Flangless SC connectors.
- Grommet Quantity: Supports up to 4 single or multi-hole grommets covering a cable diameter range from 2.4mm to 14.0mm.
- Aerial- Underground Application
- 12 Fiber Splice Capacity
- Ease of Installation

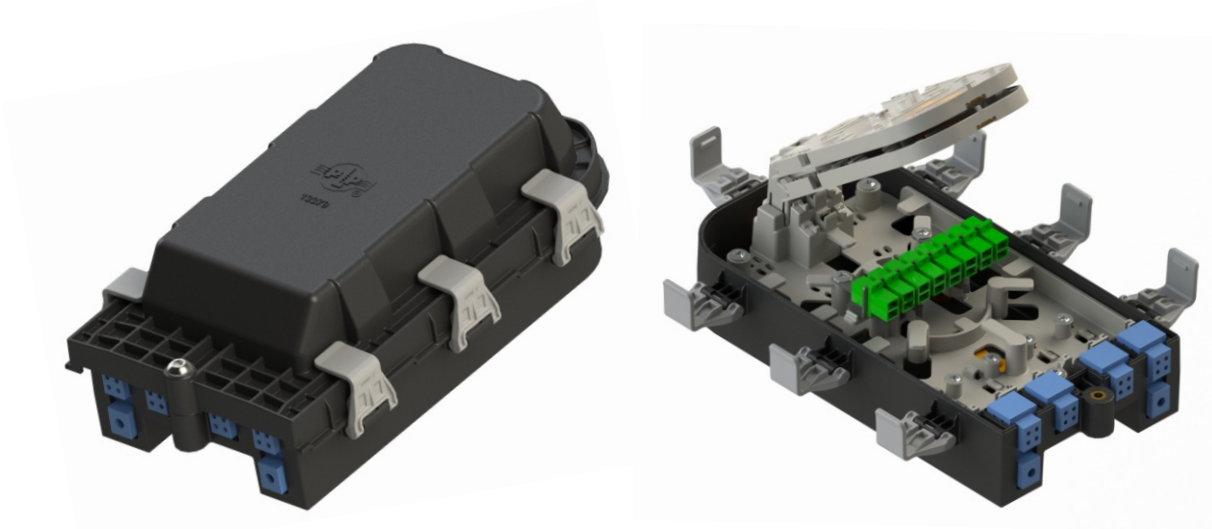


COYOTE® MDC

The **MDC (Multi-Drop Closure)** is a highly reliable, small-scale, cost-effective closure which provides a flexible alternative to traditional network interface devices. The closure has a robust latch system, paired with an integrated over moulded seal. This allows for effortless re-entry and creates a secure seal over a wide range of cable profiles. By manufacturing from high strength materials and subjecting to stringent thermocycle and ingress protection tests, The MDC is a built-to-last closure protecting fibre optic splices from water ingress.

FEATURES AND BENEFITS

- Dimensions: 200mm x 135mm x 50mm (H x W x D)
- Max Splice Capacity: 48F for G657.A2 or 36F for G657.A1 (2.4mm X 40mm Splice protector)
- Max Adapter Capacity: Can accommodate 4 x SC simplex/ LC duplex Mid Couplers
- Degree of Protection: IP 68 water ingress, Ik10 impact protection
- Material: Casing- UV stable, flame retardant PC
Seal Silicone
- Storage: Loop through storage capacity of up to a total of 2 meters of 2.5mm buffer tube or alternatively up to 80m of bare fibre



COYOTE® STP-L

The **STP-L (Service Termination Point-Large)** is a small scale, cost effective closure which provides an alternative to traditional network interface devices, while offering much greater application flexibility. The robust latch system, paired with an integrated overmoulded cover, allows for quick re-entry and creates a secure seal over a wide range of cable profiles.

FEATURES AND BENEFITS

- Can support up to 16 drops with 2 ports for loop through
- Constructed from UV-Stabilized, flame retardant material
- Robust latch system paired with factory installed gaskets allows for quick re-entry and re-use.
- Versatile design capable of being configured for Splice, Pre-Con and GPON applications.
- Integrated Splitter facility with dedicated Splice protector holder for 2x Micro PLC Splitters and 2x 40mm Splice Protectors.
- Each Splice tray accommodates 2x interchangeable 12F Splice blocks (Double stack) which can be replaced with a PLC Splitter block (Holds up to 4 Splitters)

ACCESSORIES

Grommet Selection		Cable Diameter Range In
A		SOLID / PLUG 80812437
B		.170 - .220 (4.3 - 5.6 MM) ROUND CABLES 80812219
C		.220 - .270 (5.6 - 6.9 MM) ROUND CABLES 80812433
D		.270 - .320 (6.9 - 8.1 MM) ROUND CABLES 80812220
E		.320 - .370 (8.1 - 9.4 MM) ROUND CABLES 80812434
F		.370 - .420 (9.4 - 10.7 MM) ROUND CABLES 80812172
G		.420 - .470 (10.7 - 11.9 MM) ROUND CABLES 80812435
H		.470 - .550 (11.9 - 14.0 MM) ROUND CABLES 80812436
J		.156 - .170 (4.0 - 4.3 MM) ROUND DROP CABLES 80812251
K		.093 - .125 (2.4 - 3.2 MM) ROUND DROP CABLES 80812400
1		.2x 2.4 - 3.2 MM Round Drop Cables 1x 6.9 - 8.1 MM Round Cable TLG-1

Grommet under test to confirm IP performance. Contact your local PLP representative for more details before placing an order.

Adapter Type	
S	Splice only
1	 SC/APC (Simplex)
2	 SC/UPC (Simplex)
3	 LC/APC (Duplex)
4	 LC/UPC (Duplex)
5	 SC/APC (Duplex)
6	 SC/UPC (Duplex)
7	 LC/APC (Quad)
8	 LC/UPC (Quad)

STP-L Splice Tray Selection	
24	 1 Splice Tray
48	 2 Splice Trays
72	 3 Splice Trays
96	 4 Splice Trays

MDC Splice Tray Selection	
24	
36	
48	



PLP SOUTH AFRICA
180 OHRTMANN ROAD
WILLOWTON, PIETERMARITZBURG
3201

(033) 397 5800
SALES.SA@PLP.COM
PREFORMED.COM/ZA