

ARMOR-GRIP® Suspension: Double

Weight: 0.00kg

Dimensions: 0.00cm x 0.00cm x 0.00cm

Description

ARMOR-GRIP Suspension is designed to reduce the static and dynamic stresses at the support point, so that the conductor or strand is protected against the effects of oscillations. It also protects the conductor in the support against impulse and power flash-over. The ARMOR-GRIP Suspension is recommended as being superior to armor – clamp combinations, for protecting conductors from bending stress, compression stress and abrasion.

Features

- Available PARROT-BILL rod ends for Extra High Voltage (EHV), 345 KV and above

Documentation

Application Procedures

[SP-2090 \(ARMOR-GRIP Suspension-Double\)](#)

Catalog Pages

[ARMOR-GRIP Suspension Double - Catalog](#)

Part Tables

Catalog Number	Diameter Range (Inches)		Nominal Conductor Size	AGS® Rods				AGS Hardware Sets Per Carton	AGS Rods & Hardware Wt./Lbs. Per Carton	Color Code
	Min.	Max.		Length (Inches)	Rod Diameter (Inches)	Rods Per Set	Sets Per Carton			
AGS-5888	.304	.315	#4, 3/4 AWAC	38	.102	10	24	48	102	Brown
AGS-5889	.316	.327	#2, 6/1	38	.102	11	24	48	104	Red
AGS-5890	.328	.342	#4, 2/5 AWAC	38	.102	11	24	48	106	Orange
AGS-5891	.343	.355	#3, 3/4 AWAC	38	.102	11	24	48	106	Black
AGS-5892	.356	.374	#1, 5/2 AWAC	38	.102	12	24	48	108	Green
AGS-5893	.375	.389	#3, 2/5 AWAC	38	.102	12	24	48	108	Purple
AGS-5894	.390	.404	1/0, 6/1	48	.128	11	24	48	135	Yellow
AGS-5895	.405	.418	1/0, 5/2 AWAC	48	.128	11	24	48	135	Brown
AGS-5896	.419	.434	#1, 3/4 AWAC	48	.128	11	24	48	135	Green
AGS-5897	.435	.450	2/0, 6/1	48	.128	11	24	48	135	Blue
AGS-5898	.451	.470	2/0, 5/2 AWAC	48	.128	12	24	48	141	White
AGS-5899	.471	.481	110.8, 12/7	48	.128	12	24	48	141	Green
AGS-5800	.482	.499	#1, 2/5 AWAC	53	.167	10	18	36	76	Red
AGS-5801	.500	.512	3/0, 6/1	53	.167	10	18	36	76	Blue
AGS-5802	.513	.530	4/0, 7W All-Alum.	53	.167	11	18	36	78	Green
AGS-5803	.531	.542	159, 12/7 AWAC	53	.167	11	18	36	78	Yellow
AGS-5804	.543	.555	2/0, 3/4 AWAC	58	.182	10	18	36	89	Black
AGS-5805	.556	.573	4/0, 6/1	58	.182	11	18	36	92	White
AGS-5806	.574	.594	266.8, 7-19W All-Alum.	58	.182	11	18	36	92	Brown
AGS-5807	.595	.606	266.8, 18/1 AWAC	58	.182	11	18	36	92	Orange
AGS-5808	.607	.619	266.8, 18/1	58	.182	11	18	36	92	Purple
AGS-5809	.620	.645	266.8, 26/7	66	.182	12	18	36	92	Red
AGS-5810	.646	.673	336.4, 19W All-Alum.	72	.204	11	15	30	98	Blue
AGS-5811	.674	.690	300, 26/7	72	.204	11	15	30	100	Green
AGS-5812	.691	.710	336.4, 26/7 AWAC	72	.204	12	15	30	105	Yellow
AGS-5813	.711	.731	336.4, 26/7	72	.204	12	15	30	105	Black
AGS-5814	.732	.750	336.4, 30/7	72	.204	12	15	30	105	White
AGS-5815	.751	.768	397.5, 26/7 AWAC	78	.250	10	12	24	110	Brown
AGS-5816	.769	.795	397.5, 26/7	78	.250	11	12	24	110	Orange
AGS-5817	.796	.824	397.5, 30/7	78	.250	11	12	24	114	Purple
AGS-5818	.825	.845	477, 26/7 AWAC	82	.250	11	12	24	119	Red
AGS-5819	.846	.870	477, 26/7	82	.250	11	12	24	119	Blue
AGS-5820	.871	.893	477, 30/7	82	.250	12	12	24	126	Green
AGS-5821	.894	.907	500, 30/7	82	.250	12	12	24	126	Green

Catalog Number	Diameter Range (Inches)		Nominal Conductor Size	AGS® Rods				AGS Hardware Sets Per Carton	AGS Rods & Hardware Wt./Lbs. Per Carton	Color Code
	Min.	Max.		Length (Inches)	Rod Diameter (Inches)	Rods Per Set	Sets Per Carton			
AGS-5822	.908	.920	556.5, 24/7	90	.250	12	9	18	133	Yellow
AGS-5823	.921	.937	556.5, 26/7	90	.250	12	9	18	110	Black
AGS-5824	.938	.962	556.5, 30/7	90	.250	12	9	18	110	White
AGS-5825	.963	.986	605, 26/7	90	.250	13	9	18	115	Brown
AGS-5826	.987	1.005	605, 30/19	90	.250	13	9	18	115	Orange
AGS-5827	1.006	1.022	636, 30/19	108	.310	11	6	12	117	Purple
AGS-5828	1.023	1.040	715.5, 24/7	108	.310	11	6	12	117	Red
AGS-5829	1.041	1.074	715.5, 26/7	108	.310	11	6	12	117	Blue
AGS-5830	1.075	1.090	715.5, 30/19	108	.310	12	6	12	122	Green
AGS-5831	1.091	1.118	795, 26/7	108	.310	12	6	12	122	Yellow
AGS-5832	1.119	1.136	900, 45/7	108	.310	12	6	12	123	Black
AGS-5833	1.137	1.152	795, 30/19	108	.310	12	6	12	123	White
AGS-5834	1.153	1.175	900, 54/7	108	.310	12	6	12	123	Brown
AGS-5835	1.176	1.208	954, 54/7	108	.310	12	6	12	123	Orange
AGS-5836	1.209	1.226	1033.5, 45/7	117	.365	11	3	6	86	Purple
AGS-5837	1.227	1.259	1033.5, 54/7	117	.365	11	3	6	86	Red
AGS-5838	1.260	1.286	1113, 48/7	117	.365	12	3	6	90	Blue
AGS-5839	1.287	1.314	1113, 54/19	117	.365	12	3	6	90	Green
AGS-5840	1.315	1.355	1192.5, 54/19	117	.365	12	3	6	90	Yellow
AGS-5841	1.356	1.394	1272, 54/19	120	.365	12	3	6	96	Black
AGS-5842	1.395	1.416	1351.5, 48/7	120	.365	13	3	6	100	White
AGS-5843	1.417	1.442	1351.5, 54/19	120	.365	13	3	6	100	Brown
AGS-5844	1.443	1.477	1431, 48/7	120	.365	13	3	6	100	Orange
AGS-5845	1.478	1.516	1510.5, 54/19	120	.365	13	3	6	100	Purple
AGS-5846	1.517	1.557	1590, 54/19	120	.365	13	3	6	100	Red
AGS-5847	1.558	1.579	1780, 72/7	137	.365	14	3	6	125	Blue
AGS-5848	1.580	1.612	1780, 84/19	137	.365	14	3	6	125	Green
AGS-5849	1.613	1.650	2000, 91W	137	.365	14	3	6	126	Yellow
AGS-5850	1.651	1.688	2000, 72/7	137	.365	15	3	6	131	Black
AGS-5851	1.689	1.711	2000, 84/19	137	.365	15	3	6	131	White
AGS-5852	1.712	1.752	2129, 84/19	137	.365	15	3	6	131	Brown
AGS-5853	1.753	1.790	2156, 84/19	137	.365	15	3	6	131	Orange
AGS-5854	1.791	1.828	2300, 84/19	137	.365	15	3	6	131	Purple

Note: Add HT to catalog number for High Temperature Version (Ex.: AGS-5854HT).

Extra High Voltage (EHV) version - 345 KV and above

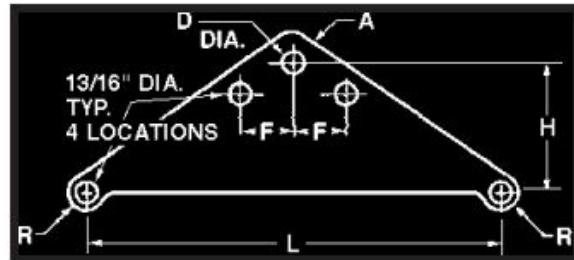
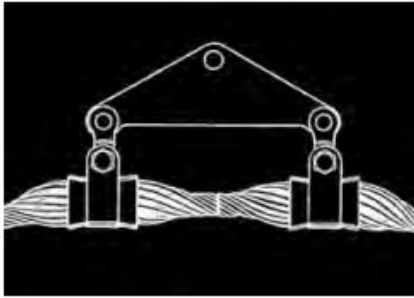
Catalog Number	Diameter Range (Inches)		Nominal Conductor Size	AGS® Rods				AGS Hardware Sets Per Carton	AGS Rods & Hardware Wt./Lbs. Per Carton	Color Code
	Min.	Max.		Length (Inches)	Rod Diameter (Inches)	Rods Per Set	Sets Per Carton			
AGS-5855	.908	.920	556.5, 24/7	90	.250	12	9	18	133	Yellow
AGS-5856	.921	.937	556.5, 26/7	90	.250	12	9	18	110	Black
AGS-5857	.938	.962	556.5, 30/7	90	.250	12	9	18	110	White
AGS-5858	.963	.986	605, 26/7	90	.250	13	9	18	115	Brown
AGS-5859	.987	1.005	605, 30/19	90	.250	13	9	18	115	Orange
AGS-5860	1.006	1.022	636, 30/19	108	.310	11	6	12	117	Purple
AGS-5861	1.023	1.040	715.5, 24/7	108	.310	11	6	12	117	Red
AGS-5862	1.041	1.074	715.5, 26/7	108	.310	11	6	12	117	Blue
AGS-5863	1.075	1.090	715.5, 30/19	108	.310	12	6	12	122	Green
AGS-5864	1.091	1.118	795, 26/7	108	.310	12	6	12	122	Yellow
AGS-5865	1.119	1.136	900, 45/7	108	.310	12	6	12	123	Black
AGS-5866	1.137	1.152	795, 30/19	108	.310	12	6	12	123	White
AGS-5867	1.153	1.175	900, 54/7	108	.310	12	6	12	123	Brown
AGS-5868	1.176	1.208	954, 54/7	108	.310	12	6	12	123	Orange
AGS-5869	1.209	1.226	1033.5, 45/7	117	.365	11	3	6	86	Purple
AGS-5870	1.227	1.259	1033.5, 54/7	117	.365	11	3	6	86	Red
AGS-5871	1.260	1.286	1113, 48/7	117	.365	12	3	6	90	Blue
AGS-5872	1.287	1.314	1113, 54/19	117	.365	12	3	6	90	Green
AGS-5873	1.315	1.355	1192.5, 54/19	117	.365	12	3	6	90	Yellow
AGS-5874	1.356	1.394	1272, 54/19	120	.365	12	3	6	96	Black
AGS-5875	1.395	1.416	1351.5, 48/7	120	.365	13	3	6	100	White
AGS-5876	1.417	1.442	1351.5, 54/19	120	.365	13	3	6	100	Brown
AGS-5877	1.443	1.477	1431, 48/7	120	.365	13	3	6	100	Orange
AGS-5878	1.478	1.516	1510.5, 54/19	120	.365	13	3	6	100	Purple
AGS-5879	1.517	1.557	1590, 54/19	120	.365	13	3	6	100	Red
AGS-5880	1.558	1.579	1780, 72/7	137	.365	14	3	6	125	Blue
AGS-5881	1.580	1.612	1780, 84/19	137	.365	14	3	6	125	Green
AGS-5882	1.613	1.650	2000, 91W	137	.365	14	3	6	126	Yellow
AGS-5883	1.651	1.688	2000, 72/7	137	.365	15	3	6	131	Black
AGS-5884	1.689	1.711	2000, 84/19	137	.365	15	3	6	131	White
AGS-5885	1.712	1.752	2129, 84/19	137	.365	15	3	6	131	Brown
AGS-5886	1.753	1.790	2156, 84/19	137	.365	15	3	6	131	Orange
AGS-5887	1.791	1.828	2300, 84/19	137	.365	15	3	6	131	Purple

Note: Add HT to catalog number for High Temperature Version (Ex.: AGS-5887HT).

Accessories

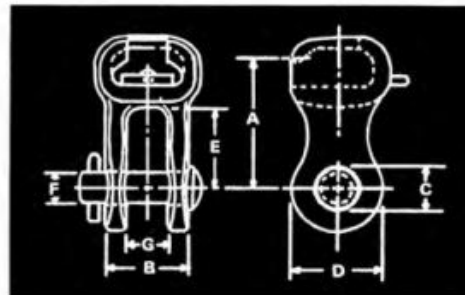
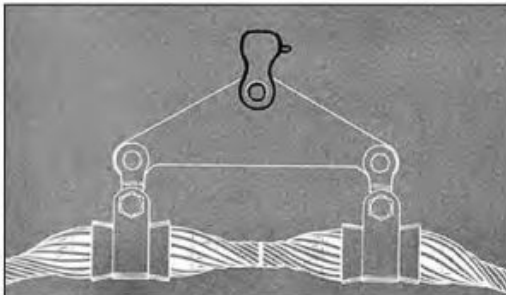
FITTINGS

AGS Yoke Plate



Catalog Number	Dimensions in Inches						Plate Thickness (Inches)	Ultimate Strength (Pounds)
	L	H	D	R	A	F		
YP-5907	12	4	13/16	13/16	1	NONE	1/2	30,000
YP-5908	18	6-1/4	1	15/16	1-1/4	3-1/2	5/8	40,000
YP-5909	22	7-1/4	1	15/16	1-1/4	4-3/16	5/8	40,000
YP-5910	26	8-1/2	1	15/16	1-1/4	4-15/16	3/4	50,000
YP-5911	29	9-1/2	1	15/16	1-1/4	5-1/2	3/4	50,000
YP-5912	32	10-1/2	1	15/16	1-1/4	6-1/8	3/4	50,000
YP-5913	37	11-3/4	1	15/16	1-1/4	7-1/16	3/4	50,000

AGS Socket Clevis



Catalog Number	General Dimensions							Ultimate Strength (Pounds)	For Use with Specific Strength Insulators (Pounds)
	A In.	B In.	C In.	D In.	E In.	F In.	G In.		
SC-5194	2-5/8	1-9/16	11/16	1-3/4	1-5/8	5/8	13/16	30,000	15,000 thru 30,000
SC-5329	3-1/4	-	-	2-3/16	2-1/16	7/8	1-1/8	50,000	36,000 thru 50,000