

THERMOLIGN[®] Suspension

Weight: 0.00kg

Dimensions: 0.00cm x 0.00cm x 0.00cm

Description

The **THERMOLIGN Suspension** is specifically designed for applications on aluminum based high temperature conductors that will be operated at continuous temperatures ABOVE 200° C.

Features

- Multi-layer design for maximum mechanical performance and maximum heat dissipation
- Minimal heat transferred to mating hardware and insulators
- Cushioned insert surrounding conductor for superior protection against wind and ice induced loadings at support structures
- No detrimental heat transfer to the Cushioned insert
- Thermal Rating (Continuous) 250°C
- Available with PARROT-BILL Rod ends for EHV (345 KV and above) applications.
- Vertical Strength: 25,000# (111kN) unless otherwise noted.
- Slip Load: Approximately 20% of the conductor RBS initially (expected to increase after time in service).
- Line Angle: Maximum of 30° for single suspension upto 60° for double suspension with yoke plate.

Documentation

Application Procedures

[SP-2941 \(THERMOLIGN[®] Suspension\)](#)

Catalog Pages

[THERMOLIGN[®] Suspension - Catalog](#)

Part Tables

NOTE:

Add EHV to Catalog Number for PARROT-BILL Rod Ends (Example: TLS-0100-EHV)

Add CE to Catalog Number to include a Clevis Eye

Add YC to Catalog Number to include a Y Clevis Eye

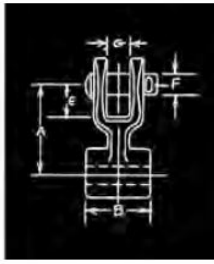
Add SE to Catalog Number to include a Socket Eye

Catalog Number		Diameter Range				Nominal	Length (overall)				Color Code	
Single	Double	Min. (in)	Max. (in)	Min. (mm)	Max. (mm)	Cond (kcmil)	Sgl (in)	Dbl (in)	Sgl (m)	Dbl (m)	Inner	Outer
TLS-0093	TLS-0293	0.574	0.590	14.6	15.0	207	98	120	2.49	3.05	Yellow	Green
TLS-0094	TLS-0294	0.619	0.636	15.7	16.2	257	98	120	2.49	3.05	Black	Black
TLS-0092	TLS-0292	0.637	0.673	16.2	17.1	267	100	120	2.54	3.05	Red	Brown
TLS-0095	TLS-0295	0.674	0.708	17.1	18.0	300	98	125	2.49	3.18	Orange	Orange
TLS-0096	TLS-0296	0.709	0.726	18.0	18.4	336.4	100	129	2.54	3.28	Green	Purple
TLS-0097	TLS-0297	0.727	0.759	18.5	19.3	336.4	100	129	2.54	3.28	Pink	Red
TLS-0098	TLS-0298	0.760	0.786	19.3	20.0	397.5	100	129	2.54	3.28	White	Blue
TLS-0099	TLS-0299	0.787	0.814	20.0	20.7	397.5, 477	100	129	2.54	3.28	Purple	Green
TLS-0100	TLS-0300	0.815	0.855	20.7	21.7	477	100	129	2.54	3.28	Red	Yellow
TLS-0101	TLS-0301	0.856	0.894	21.7	22.7	477, 556	100	132	2.54	3.35	Blue	Black
TLS-0102	TLS-0302	0.895	0.916	22.7	23.3	556	100	132	2.54	3.35	Black	White
TLS-0103	TLS-0303	0.917	0.942	23.3	23.9	556	100	132	2.54	3.35	Orange	Brown
TLS-0104	TLS-0304	0.943	0.977	23.9	24.8	605, 636	100	132	2.54	3.35	Green	Orange
TLS-0105	TLS-0305	0.978	1.016	24.8	25.8	636	100	132	2.54	3.35	Pink	Purple
TLS-0106	TLS-0306	1.017	1.057	25.8	26.8	636, 715	100	132	2.54	3.35	Purple	Red
TLS-0107	TLS-0307	1.058	1.079	26.8	27.4	715	112	149	2.84	3.78	White	Blue
TLS-0108	TLS-0308	1.080	1.112	27.4	28.2	795	112	149	2.84	3.78	White	Green
TLS-0109	TLS-0309	1.113	1.150	28.2	29.2	795, 954	112	149	2.84	3.78	Yellow	Yellow
TLS-0110	TLS-0310	1.151	1.188	29.2	30.2	954	112	149	2.84	3.78	Yellow	Black
TLS-0111	TLS-0311	1.189	1.208	30.2	30.7	954	112	149	2.84	3.78	Yellow	White
TLS-0112	TLS-0312	1.209	1.262	30.7	32.1	1033.5	125	154	3.18	3.91	Brown	Red
TLS-0113	TLS-0313	1.263	1.308	32.1	33.2	1113, 1192.5	125	154	3.18	3.91	Brown	Blue
TLS-0114	TLS-0314	1.309	1.338	33.2	34.0	1192.5	125	154	3.18	3.91	Red	Green
TLS-0115	TLS-0315	1.339	1.368	34.0	34.7	1272	125	154	3.18	3.91	Red	Yellow
TLS-0116	TLS-0316	1.369	1.409	34.7	35.7	1272, 1351.5	125	154	3.18	3.91	Blue	Black
TLS-0117	TLS-0317	1.410	1.449	35.7	36.8	1351.5, 1431	125	154	3.18	3.91	Black	White
TLS-0118	TLS-0318	1.450	1.490	36.8	37.9	1431, 1510.5	125	154	3.18	3.91	Orange	Brown
TLS-0119	TLS-0319	1.491	1.530	37.9	38.9	1510.5, 1590	125	154	3.18	3.91	Green	Orange
TLS-0120	TLS-0320	1.531	1.572	38.9	39.9	1590	125	154	3.18	3.91	Pink	Purple

Accessories

FITTINGS

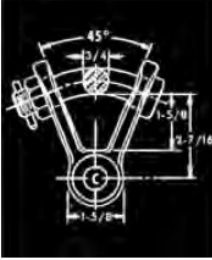
CLEVIS EYE



Catalog Number	Diameter Range (mm)	Dimensions (mm)						G
		A	B	C	D	E	F	
CE-5105	.574" - 1.057" (14.6 - 26.8)	3-1/8" (79)	1-1/16" (27)	13/16" (21)	1-1/2" (38)	1-1/2" (38)	5/8" (16)	13/16" (21)
CE-5106	1.058" - 1.572" (26.8 - 39.9)	3-1/8" (79)	2-1/8" (54)	13/16" (21)	1-1/2" (38)	1-1/2" (38)	5/8" (16)	13/16" (21)

Vertical Ultimate Strength - 25,000 lbs.

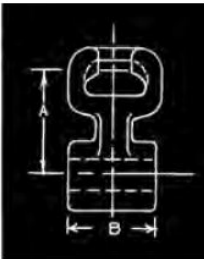
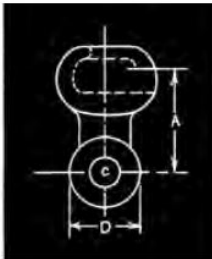
Y CLEVIS EYE



Catalog Number	Diameter Range (mm)	Dimensions (mm)	
		B	C
YC-5209	.574" - 1.057" (14.6 - 26.8)	1-1/16 (27)	13/16 (21)
YC-5211	1.058" - 1.572" (26.8 - 39.9)	2-1/8 (54)	13/16 (21)

Vertical Ultimate Strength - 25,000 lbs.

SOCKET EYE



Catalog Number	Diameter Range (mm)	Dimensions (mm)				Vertical Ultimate Strength
		A	B	C	D	
SE-5154	.574" - 1.057" (14.6 - 26.8)	2-5/16" (59)	1-1/6" (27)	13/16" (21)	1-1/2" (38)	25,000 lbs
SE-5155	1.058" - 1.572" (26.8 - 39.9)	2-5/16" (59)	2-1/8" (54)	13/16" (21)	1-1/2" (38)	30,000 lbs