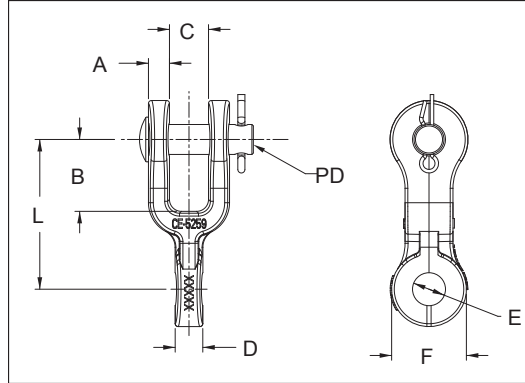
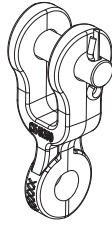
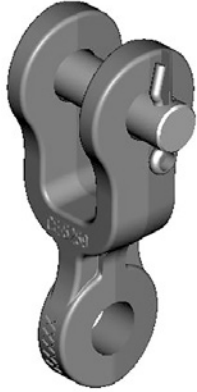




Transmission Line String Hardware

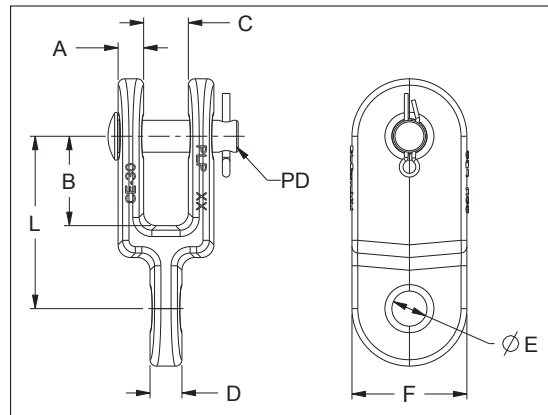
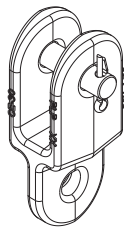
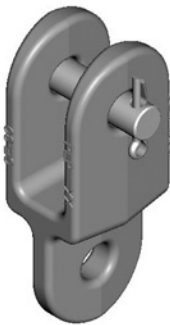
Clevis Eye



Features	
Body	Ductile iron, hot dip galvanized
Hardware	Galvanized Steel
Cotter Pin	Stainless Steel

Catalog Number	General Dimensions – inches (mm)								Vertical Ultimate Strength lbf (kN)	Wt. Per 100 Units lbs (kg)
	A	B	C	D	E	F	L	PD		
CE-5259	7/16 (11.2)	1-1/2 (38.1)	13/16 (20.6)	1/2 (17.5)	11/16 (17.5)	1-1/2 (38.1)	3-1/8 (79.4)	5/8 (16)	15,000 (67)	104 (47)
CE-5261	7/16 (11.2)	1-1/2 (38.1)	13/16 (20.6)	3/4 (19.1)	11/16 (17.5)	1-1/2 (38.1)	3-1/8 (79.4)	5/8 (16)	20,000 (84)	104 (47)
CE-5105	7/16 (11.2)	1-1/2 (38.1)	13/16 (20.6)	1-1/16 (26.9)	13/16 (20.6)	1-1/2 (38.1)	3-1/8 (79.4)	5/8 (16)	25,000 (111)	105 (48)
CE-5106	7/16 (11.2)	1-1/2 (38.1)	13/16 (20.6)	2-1/8 (54.0)	13/16 (20.6)	1-1/2 (38.1)	3-1/8 (79.4)	5/8 (16)	25,000 (111)	157 (71)
CE-5107	7/16 (11.2)	1-1/2 (38.1)	13/16 (20.6)	1 (25.4)	11/16 (17.5)	1-1/2 (38.1)	3-1/8 (79.4)	5/8 (16)	25,000 (111)	125 (57)

Clevis Eye – 30K



Features	
Body	Ductile iron, hot dip galvanized
Hardware	Galvanized Steel
Cotter Pin	Stainless Steel

Catalog Number	General Dimensions – inches (mm)								Vertical Ultimate Strength lbf (kN)	Wt. Per 100 Units lbs (kg)
	A	B	C	D	E	F	L	PD		
CE-30	1/2 (12.7)	1-3/4 (44.5)	7/8 (22.2)	5/8 (16)	11/16 (18)	2-1/4 (57.2)	3-3/8 (85.7)	5/8 (16)	30,000 (133)	290 (131)