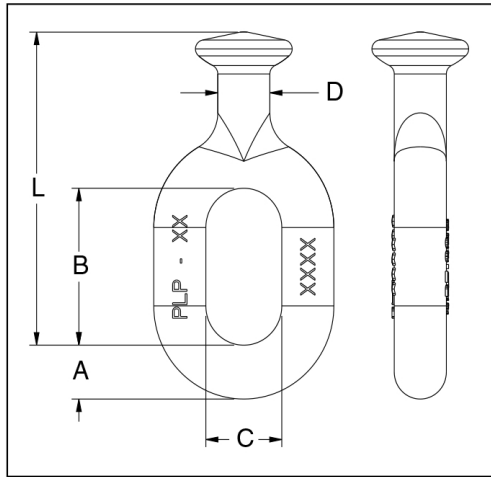
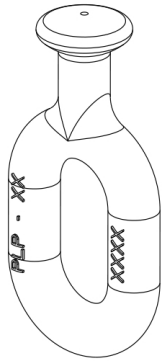
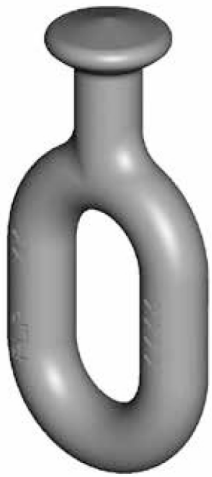


Transmission Line String Hardware

Ball Eye



Features	
Body	Forged steel, hot dip galvanized
Hardware	Galvanized Steel
Cotter Pin	Stainless Steel

Catalog Number	General Dimensions inches (mm)					For Use with Insulators per ANSI Class Spec. C-29.2-71	Vertical Ultimate Strength lbf (kN)	Wt. Per 100 Units lbs (kg)
	A	B	C	D	L			
BE-30	11/16 (17.5)	2 (51)	1 (25.4)	11/16 (17.5)	4 (101.6)	52-3 and 52-5	30,000 (133)	100 (45)
BE-50	3/4 (19)	2 -1/2 (63.5)	1-1/4 (31.8)	7/8 (22.6)	4-13/16 (122.2)	52-8 and 52-11	50,000 (222)	150 (68)