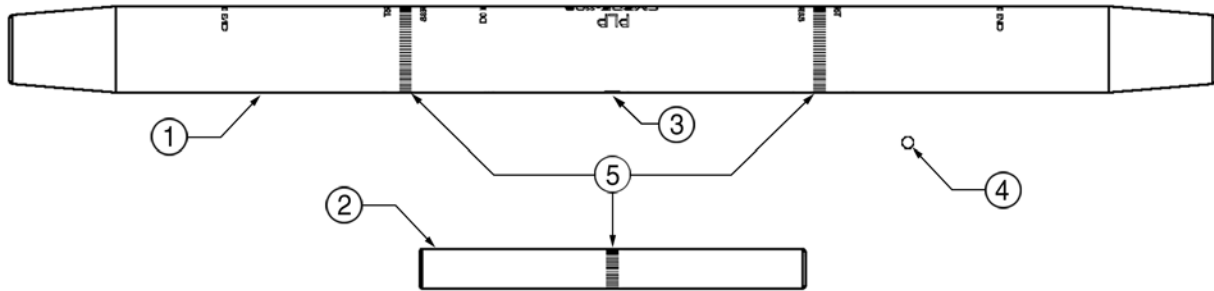




Two Stage Compression Hardware Series for ACSS and ACSS/TW Conductors

Compression Splice Assembly – CMPSP



Splice CMPSP

NOMENCLATURE

Splices

- 1. Aluminum Splice Body:** Aluminum component of splice assembly that is compressed around the OD of the conductor.
- 2. Steel Splice Body:** Steel component of the splice assembly that is compressed around the OD of the steel core.
- 3 Filler Hole:** Hole utilized to insert inhibitor compound into the compression assembly.
- 4 Filler Plug:** Plug utilized to close off the filler hole after inhibitor compound has been inserted into the compression assembly.
- 5. Knurl Marks:** Knurls placed on the OD of the aluminum and steel components to mark start and stop locations for compression.

GENERAL RECOMMENDATIONS

Compression splice assemblies are specially designed for applications on ACSS conductor only.

Designs utilize a dual compression product requiring compression of a steel component around the steel core and an aluminum component around the aluminum wire OD.

Compression of products can be completed with industry standard presses and dies.

GENERAL SPECIFICATIONS

Holding Strength: 95% or more of the conductor rated breaking strength (RBS) in accordance with ANSI C119.4 requirements for tensile strength.

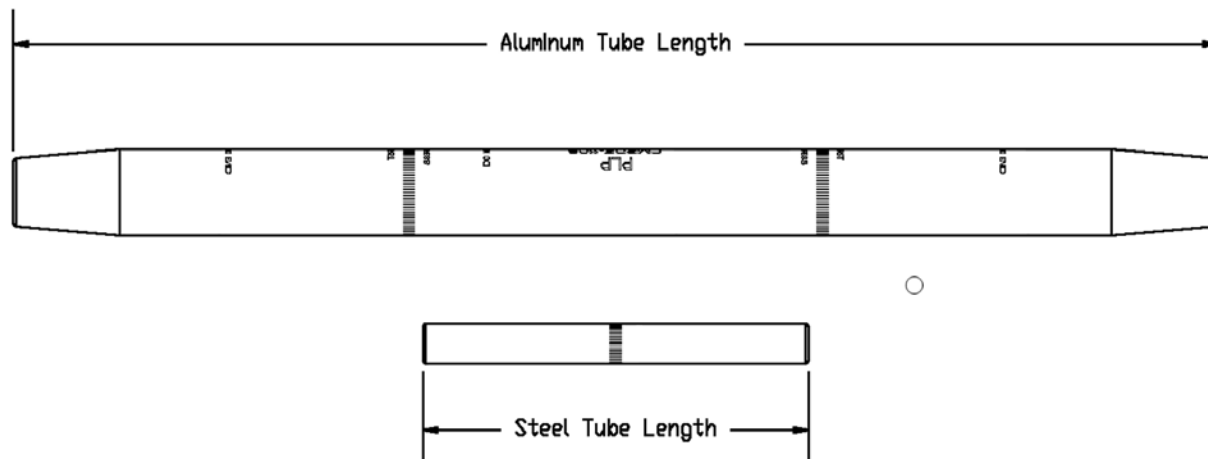
Dead End pad is constructed with a 15° angle which allows for the terminal connection of jumper and dead-end to be bolted together in a 0° or 30° configuration.

Includes: Aluminum splice body, steel splice body, and filler plug.

High temperature inhibitor compound is required for ACSS compression products.

Two Stage Compression Hardware Series for ACSS and ACSS/TW Conductors

Compression Splice Assembly – CMPSP



ACSS Conductors

Dead End Assembly Catalog Number	Conductor Information				Al. Body Part No.	Al. Die Size	Steel Eye Part No.	Steel Die Size	Dimensions	
	Code Word	Area kcmil	Al/St	Dia in					Al. Tube Length in	DE Eye Length in
CMPSP-701HT	Woodcock ACSS	336.4	22/7	0.701	86003	20AH	86004	76SH	33	5.2
CMPSP-720HT	Linnet ACSS	336.4	26/7	0.720	86008	20AH	86009	10SH	33	5.2
CMPSP-741HT	Oriole ACSS	336.4	30/7	0.741	86013	20AH	86014	10SH	33	5.2
CMPSP-752HT	Ptarmigan ACSS	397.5	20/7	0.752	86018	20AH	86019	10SH	34.4	5.2
CMPSP-772HT	Brant ACSS	397.5	24/7	0.772	86023	20AH	86024	10SH	34.4	5.2
CMPSP-783HT	Ibis ACSS	397.5	26/7	0.783	86028	20AH	86029	10SH	34.4	5.2
CMPSP-806HT	Lark ACSS	397.5	30/7	0.806	86033	20AH	86034	12SH	32	5.2
CMPSP-824HT	Tailorbird ACSS	477	20/7	0.824	86038	20AH	86039	10SH	35.2	5.2
CMPSP-846HT	Flicker ACSS	477	24/7	0.846	86043	24AH	86044	10SH	35.2	5.2
CMPSP-858HT	Hawk ACSS	477	26/7	0.858	86048	24AH	86049	12SH	35.2	5.2
CMPSP-883HT	Hen ACSS	477	30/7	0.883	86053	24AH	86054	12SH	35.2	5.2
CMPSP-901HT	Sapsucker ACSS	556.5	22/7	0.901	86058	24AH	86059	10SH	35.2	5.2
CMPSP-914HT	Parakeet ACSS	556.5	24/7	0.914	86063	24AH	86064	10SH	38.6	5.2
CMPSP-927HT	Dove ACSS	556.5	26/7	0.927	86068	27AH	86069	12SH	38.6	5.2
CMPSP-953HT	Eagle ACSS	556.5	30/7	0.953	86073	27AH	86074	14SH	38.6	5.5
CMPSP-963HT	Goldfinch ACSS	636	22/7	0.963	86083	27AH	86084	10SH	38.6	5.2
CMPSP-966HT	Squab ACSS	605	26/7	0.966	86088	27AH	86089	12SH	38.6	5.2
CMPSP-977HT	Rook ACSS	636	24/7	0.977	86108	27AH	86109	12SH	41.1	5.2
CMPSP-991HT	Grosbeak ACSS	636	26/7	0.991	86093	27AH	86094	12SH	41.1	5.5
CMPSP-994HT	Wood Duck ACSS	605	30/7	0.994	86098	27AH	86099	14SH	41.1	5.5
	Teal ACSS	605	30/19	0.994	86098	27AH	86099	14SH	41.1	5.5
CMPSP-1000HT	Flamingo ACSS	666.6	24/7	1.000	86113	27AH	86114	12SH	41.1	5.2
CMPSP-1014HT	Gannet ACSS	666.6	26/7	1.014	86118	27AH	86119	14SH	41.1	5.5
CMPSP-1019HT	Scoter ACSS	636	30/7	1.019	86128	27AH	86129	14SH	41.1	5.5
	Egret ACSS	636	30/19	1.019	86128	27AH	86129	14SH	41.1	5.5
CMPSP-1036HT	Stilt ACSS	715.5	24/7	1.036	86138	27AH	86139	14SH	41.1	5.5
CMPSP-1051HT	Starling ACSS	715.5	26/7	1.051	86123	30AH	86124	12SH	41.1	5.5
CMPSP-1055HT	Macaw ACSS	795	42/7	1.055	86143	30AH	86144	10SH	41.1	5.2
CMPSP-1063HT	Tern ACSS	795	45/7	1.063	86148	30AH	86149	10SH	41.1	5.2
CMPSP-1081HT	Redwing ACSS	715.5	30/19	1.081	86153	30AH	86154	16SH	41.1	5.5
CMPSP-1092HT	Condor ACSS	795	54/7	1.092	86158	30AH	86159	12SH	41.1	5.5
	Cuckoo ACSS	795	24/7	1.092	86158	30AH	86159	12SH	41.1	5.5
CMPSP-1108HT	Drake ACSS	795	26/7	1.108	86168	30AH	86169	14SH	41.1	5.5
CMPSP-1131HT	Ruddy ACSS	900	45/7	1.131	86173	30AH	86174	10SH	41.1	5.2
CMPSP-1140HT	Mallard ACSS	795	30/19	1.140	86178	30AH	86179	16SH	41.1	5.5

Continued on next page



Two Stage Compression Hardware Series for ACSS and ACSS/TW Conductors

ACSS Conductors

Dead End Assembly Catalog Number	Conductor Information				Al. Body Part No.	Al. Die Size	Steel Eye Part No.	Steel Die Size	Dimensions	
	Code Word	Area kcmil	Al/St	Dia in					Al. Tube Length in	DE Eye Length in
CMPSP-1162HT	Canary ACSS	900	54/7	1.162	86183	30AH	86184	14SH	41.1	5.5
CMPSP-1165HT	Rail ACSS	954	45/7	1.165	86188	30AH	86189	10SH	41.1	5.5
	Corncake ACSS	954	20/7	1.165	86188	30AH	86189	10SH	41.1	5.5
CMPSP-1175HT	Towhee ACSS	954	48/7	1.175	86193	30AH	86194	12SH	41.1	5.5
CMPSP-1196HT	Cardinal ACSS	954	54/7	1.196	86198	30AH	86199	14SH	44.1	5.5
	Redbird ACSS	954	24/7	1.196	86198	30AH	86199	14SH	44.1	5.5
CMPSP-1203HT	Snowbird ACSS	1033.5	42/7	1.203	86203	34AH	86204	10SH	44.1	5.5
CMPSP-1212HT	Ortolan ACSS	1033.5	45/7	1.212	86208	34AH	86209	10SH	44.1	5.5
CMPSP-1245HT	Curlew ACSS	1033.5	54/7	1.245	86213	34AH	86214	14SH	44.1	5.5
CMPSP-1248HT	Canvasback ACSS	954	30/19	1.248	86218	34AH	86219	18SH	44.1	5.7
CMPSP-1258HT	Bluejay ACSS	1113	45/7	1.258	86223	34AH	86224	12SH	44.1	5.5
CMPSP-1292HT	Finch ACSS	1113	54/19	1.292	86228	34AH	86229	14SH	44.1	5.5
CMPSP-1302HT	Bunting ACSS	1192.5	45/7	1.302	86233	34AH	86234	12SH	44.1	5.5
CMPSP-1337HT	Grackle ACSS	1192.5	54/19	1.337	86238	36AH	86239	14SH	44.9	5.7
CMPSP-1345HT	Bittern ACSS	1272	45/7	1.345	86243	36AH	86244	12SH	44.9	5.5
CMPSP-1357HT	Diver ACSS	1272	48/7	1.357	86248	36AH	86249	14SH	44.9	5.5
CMPSP-1381HT	Pheasant ACSS	1272	54/19	1.381	86253	36AH	86254	16SH	44.9	5.7
CMPSP-1386HT	Dipper ACSS	1351.5	45/7	1.386	86258	36AH	86259	12SH	44.9	5.5
CMPSP-1424HT	Martin ACSS	1351.5	54/19	1.424	86263	38AH	86264	16SH	46.3	5.7
CMPSP-1427HT	Bobolink ACSS	1431	45/7	1.427	86268	38AH	86269	12SH	46.3	5.5
CMPSP-1465HT	Plover ACSS	1431	54/19	1.465	86273	38AH	86274	16SH	46.3	5.7
CMPSP-1492HT	Ratite ACSS	1590	42/7	1.492	86283	40AH	86284	12SH	46.3	5.5
CMPSP-1504HT	Lapwing ACSS	1590	45/7	1.504	86288	40AH	86289	12SH	46.3	5.7
CMPSP-1505HT	Parrot ACSS	1510.5	54/19	1.505	86293	40AH	86294	16SH	46.3	5.7
CMPSP-1544HT	Falcon ACSS	1590	54/19	1.544	86298	40AH	86299	18SH	47.2	5.8
CMPSP-1601HT	Chuckar ACSS	1780	84/19	1.601	86303	42AH	86304	14SH	47.2	5.8
CMPSP-1681HT	Mockingbird ACSS	2034.5	72/7	1.681	86308	42AH	86309	14SH	49.6	5.8
CMPSP-1700HT	Roadrunner ACSS	2057	76/19	1.700	86313	42AH	86314	14SH	49.6	5.8
CMPSP-1735HT	Kiwi ACSS	2167	72/7	1.735	86318	44AH	86319	12SH	49.8	5.8
CMPSP-1762HT	Bluebird ACSS	2156	84/19	1.762	86323	44AH	86324	16SH	49.8	5.8
CMPSP-1802HT	Thrasher ACSS	2312	76/19	1.802	86328	44AH	86329	14SH	49.8	5.8
CMPSP-1880HT	Joree ACSS	2515	76/19	1.880	86333	44AH	86334	14SH	52.2	5.8

ACSS/TW Conductors

Dead End Assembly Catalog Number	Conductor Information				Al. Body Part No.	Al. Die Size	Steel Eye Part No.	Steel Die Size	Dimensions	
	Code Word	Area kcmil	Al/St	Dia in					Al. Tube Length in	DE Eye Length in
CMPSP-659TWHT	Linnet ACSS/TW	336.4	18/7	0.659	86338	76AH	86339	12SH	33.1	5.2
CMPSP-693TWHT	Oriole ACSS/TW	336.4	16/7	0.693	86343	20AH	86344	10SH	33.1	5.2
CMPSP-776TWHT	Flicker ACSS/TW	447	18/7	0.776	86348	24AH	86349	10SH	35.2	5.2
CMPSP-789TWHT	Hawk ACSS/TW	447	18/7	0.789	86353	24AH	86354	12SH	35.2	5.2
CMPSP-825TWHT	Hen ACSS/TW	447	16/7	0.825	86358	24AH	86359	12SH	35.2	5.2
CMPSP-835TWHT	Parakeet ACSS/TW	556.5	18/7	0.835	86363	24AH	86364	10SH	35.2	5.2
CMPSP-846TWHT	Mohawk ACSS/TW	571.7	18/7	0.846	86448	24AH	86449	12SH	35.2	5.2
CMPSP-852TWHT	Dove ACSS/TW	556.5	20/7	0.852	86368	24AH	86369	12SH	35.2	5.2
CMPSP-858TWHT	Calumet ACSS/TW	565.3	20/7	0.858	86453	24AH	86454	12SH	35.2	5.2
CMPSP-890TWHT	Rook ACSS/TW	636	18/7	0.890	86373	27AH	86374	12SH	38.6	5.2
CMPSP-908TWHT	Grosbeak ACSS/TW	636	20/7	0.908	86378	27AH	86379	12SH	38.6	5.5
CMPSP-913TWHT	Mystic ACSS/TW	666.6	20/7	0.913	86458	27AH	86459	12SH	38.6	5.2
CMPSP-927TWHT	Oswego ACSS/TW	664.8	20/7	0.927	86463	27AH	86464	12SH	38.6	5.2
CMPSP-953TWHT	Scoter ACSS/TW	636	18/7	0.953	86383	27AH	86384	14SH	38.6	5.5
CMPSP-960TWHT	Tern ACSS/TW	795	17/7	0.960	86388	30AH	86389	10SH	38.6	5.2
CMPSP-977TWHT	Maumee ACSS/TW	768.2	20/7	0.977	86468	30AH	86469	14SH	38.6	5.2

Continued on next page

Two Stage Compression Hardware Series for ACSS and ACSS/TW Conductors

ACSS/TW Conductors

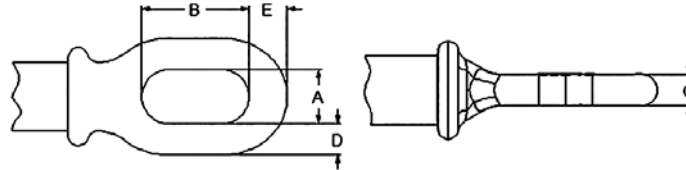
Dead End Assembly Catalog Number	Conductor Information				Al. Body Part No.	Al. Die Size	Steel Eye Part No.	Steel Die Size	Dimensions	
	Code Word	Area kcmil	Al/St	Dia in					Al. Tube Length in	DE Eye Length in
CMPSP-980TWHT	Puffin ACSS/TW	795	18/7	0.980	86393	30AH	86394	12SH	38.6	5.2
CMPSP-990TWHT	Wabash ACSS/TW	762.8	20/7	0.990	86423	30AH	86424	14SH	38.6	5.2
CMPSP-993TWHT	Condor ACSS/TW	795	20/7	0.993	86398	30AH	86399	12SH	38.6	5.5
CMPSP-1010TWHT	Drake ACSS/TW	795	20/7	1.010	86403	30AH	86404	14SH	38.6	5.5
CMPSP-1044TWHT	Phoenix ACSS/TW	954	30/7	1.044	86413	30AH	86414	12SH	41.1	5.2
CMPSP-1055TWHT	Canary ACSS/TW	900	20/7	1.055	86408	30AH	86409	14SH	41.1	5.5
CMPSP-1060TWHT	Kettle ACSS/TW	957.2	32/7	1.060	86483	30AH	86484	12SH	41.1	5.2
CMPSP-1061TWHT	Rail ACSS/TW	954	32/7	1.061	86418	30AH	86419	10SH	41.1	5.5
CMPSP-1077TWHT	Fraser ACSS/TW	946.7	35/7	1.077	86488	30AH	86489	12SH	41.1	5.2
CMPSP-1084TWHT	Cardinal ACSS/TW	954	20/7	1.084	86423	30AH	86424	14SH	41.1	5.5
CMPSP-1089TWHT	Snowbird ACSS/TW	1033.5	30/7	1.089	86428	34AH	86429	12SH	41.1	5.5
CMPSP-1092TWHT	Columbia ACSS/TW	966.2	21/7	1.092	86493	30AH	86494	14SH	41.1	5.5
CMPSP-1102TWHT	Ortolan ACSS/TW	1033.5	32/7	1.102	86433	34AH	86434	12SH	41.1	5.5
CMPSP-1108TWHT	Suwannee ACSS/TW	959.6	22/7	1.108	86498	30AH	86499	14SH	41.1	5.7
CMPSP-1129TWHT	Curlew ACSS/TW	1033.5	22/7	1.129	86438	34AH	86439	14SH	44.1	5.5
CMPSP-1143TWHT	Bluejay ACSS/TW	1113	33/7	1.143	86558	34AH	86559	12SH	44.1	5.5
CMPSP-1155TWHT	Cheyenne ACSS/TW	1168.1	30/7	1.155	86503	34AH	86504	12SH	44.1	5.2
CMPSP-1165TWHT	Genessee ACSS/TW	1158	33/7	1.165	86508	34AH	86509	12SH	44.1	5.2
CMPSP-1167TWHT	Oxbird ACSS/TW	1192.5	30/7	1.167	86568	34AH	86569	12SH	44.1	5.2
CMPSP-1181TWHT	Bunting ACSS/TW	1192.5	33/7	1.181	86573	34AH	86574	12SH	44.1	5.5
CMPSP-1185TWHT	Finch ACSS/TW	1113	38/19	1.185	86563	34AH	86564	14SH	44.1	5.5
CMPSP-1196TWHT	Hudson ACSS/TW	1158.4	25/7	1.196	86513	34AH	86514	14SH	44.1	5.5
CMPSP-1203TWHT	Catawba ACSS/TW	1272	30/7	1.203	86518	36AH	86519	12SH	44.1	5.2
CMPSP-1213TWHT	Nelson ACSS/TW	1257.1	35/7	1.213	86588	34AH	86589	12SH	44.1	5.2
CMPSP-1220TWHT	Bittern ACSS/TW	1272	35/7	1.220	86578	36AH	86579	12SH	44.1	5.5
CMPSP-1225TWHT	Grackle ACSS/TW	1192.5	38/19	1.225	86528	36AH	86529	14SH	44.1	5.7
CMPSP-1245TWHT	Yukon ACSS/TW	1233.6	38/19	1.245	86533	34AH	86534	14SH	44.1	5.5
CMPSP-1248TWHT	Truckee ACSS/TW	1372.5	30/7	1.248	86598	34AH	86599	12SH	44.9	5.2
CMPSP-1256TWHT	Dipper ACSS/TW	1351.5	35/7	1.256	86538	36AH	86539	12SH	44.9	5.5
CMPSP-1259TWHT	Mackenzie ACSS/TW	1359.7	36/7	1.259	86593	36AH	86594	12SH	44.9	5.2
CMPSP-1264TWHT	Pheasant ACSS/TW	1272	39/19	1.264	86543	36AH	86544	16SH	44.9	5.7
CMPSP-1290TWHT	Thames ACSS/TW	1334.6	39/19	1.290	86608	36AH	86609	14SH	44.9	5.5
CMPSP-1291TWHT	Bobolink ACSS/TW	1431	36/7	1.291	86548	38AH	86549	12SH	44.9	5.5
CMPSP-1292TWHT	St. Croix ACSS/TW	1467.8	33/7	1.292	86603	38AH	86604	12SH	44.9	5.2
CMPSP-1300TWHT	Martin ACSS/TW	1351.5	39/19	1.300	86553	38AH	86554	16SH	44.9	5.7
CMPSP-1302TWHT	Miramichi ACSS/TW	1455.3	36/7	1.302	86643	38AH	86644	14SH	46.3	5.5
CMPSP-1334TWHT	Platte ACSS/TW	1569	33/7	1.334	86613	38AH	86614	12SH	46.3	5.2
CMPSP-1337TWHT	Plover ACSS/TW	1431	39/19	1.337	86638	38AH	86639	16SH	46.3	5.7
CMPSP-1340TWHT	Merrimack ACSS/TW	1433.6	39/19	1.340	86648	38AH	86649	16SH	46.3	5.5
CMPSP-1345TWHT	Potomac ACSS/TW	1557.4	36/7	1.345	86618	38AH	86619	14SH	46.3	5.5
CMPSP-1358TWHT	Lapwing ACSS/TW	1590	36/7	1.358	86653	40AH	86654	12SH	46.3	5.7
CMPSP-1382TWHT	Rio Grande ACSS/TW	1533.3	39/19	1.382	86658	38AH	86659	16SH	46.3	5.7
CMPSP-1386TWHT	Schuylkill ACSS/TW	1657.4	36/7	1.386	86638	40AH	86639	14SH	46.3	5.5
CMPSP-1408TWHT	Falcon ACSS/TW	1590	42/19	1.408	86663	40AH	86664	18SH	46.3	5.8
CMPSP-1424TWHT	Pecos ACSS/TW	1622	39/19	1.424	86668	40AH	86669	18SH	47.2	5.7
CMPSP-1427TWHT	Pee Dee ACSS/TW	1758.6	37/7	1.427	86628	40AH	86629	14SH	47.2	5.5
CMPSP-1445TWHT	Chuckar ACSS/TW	1780	37/19	1.445	86673	42AH	86674	14SH	47.2	5.8
CMPSP-1470TWHT	James ACSS/TW	1730.6	39/19	1.470	86678	40AH	86679	18SH	47.2	5.7
CMPSP-1504TWHT	Athabaska ACSS/TW	1949.6	42/7	1.504	86683	42AH	86684	14SH	49.6	5.5
CMPSP-1545TWHT	Cumberland ACSS/TW	1926.9	42/19	1.545	86688	42AH	86689	18SH	49.6	5.7
CMPSP-1602TWHT	Powder ACSS/TW	2153.8	64/19	1.602	86633	44AH	86634	14SH	49.8	5.7
CMPSP-1608TWHT	Bluebird ACSS/TW	2156	64/19	1.608	86693	44AH	86694	16SH	49.8	5.8
CMPSP-1762TWHT	Santee ACSS/TW	2627.3	64/19	1.762	86683	48AH	86684	16SH	52.2	5.7



Two Stage Compression Hardware Series for ACSS and ACSS/TW Conductors

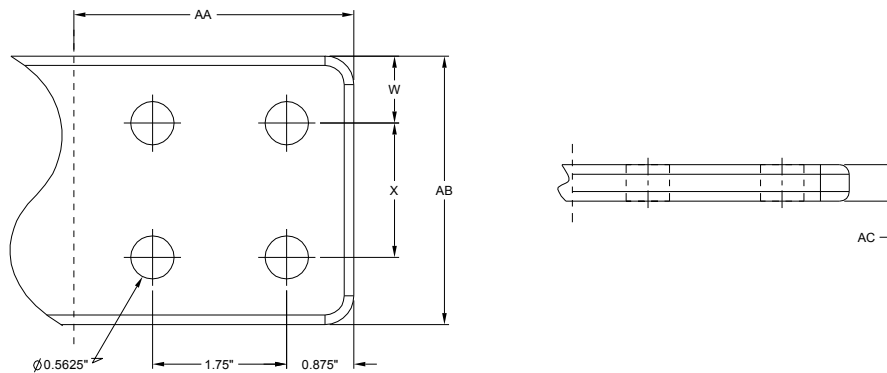
Steel Eye Dimensions and PAD Dimensions

Steel Dead-end Eye Classifications and Dimensions



Forging	A	B	C	D	E
Class 2	1.000	2.500	0.750	0.688	0.875
Class 3	1.375	2.750	0.813	0.813	1.000
Class 4	1.375	2.750	1.000	1.000	1.125
Class 5	1.375	2.750	1.125	1.125	1.313

PAD Classifications and Dimensions



Pad	W	X	AA	AB Jumper	AC Jumper	AB Dead-End	AC Dead-End
Class F	0.69	NA	3.5	3.13	0.41	3.13	0.688
Class G	0.875	1.75	3.5	3.5	0.475	3.5	0.688
Class H	0.813	1.75	3.5	3.375	0.475	3.375	0.688
Class J	1	1.75	3.5	3.75	0.6	3.75	0.688
Class K	1.188	1.75	3.5	4.125	0.6	4.125	0.688
Class L	1.063	1.75	3.5	3.875	0.6	3.875	0.688
Class M	1.063	1.75	3.5	3.875	0.71	3.875	0.688
Class N	1.063	1.75	3.5	3.875	0.71	3.875	0.792
Class P	1.094	1.75	3.5	3.938	0.81	3.938	0.792
Class Q	1.125	1.75	3.5	4	0.81	4	0.792