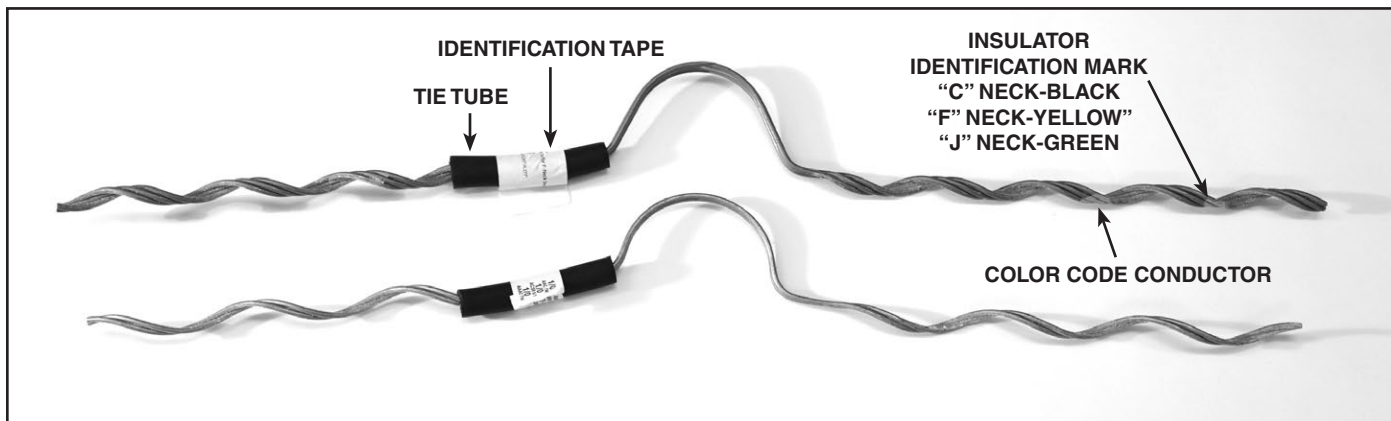




## EZ-WRAP® Side Tie\* & Alloy Side Tie for Side Groove, Single Insulator Applications

**Be sure to read and completely understand this procedure before applying product. Be sure to select the proper PREFORMED™ product before application.**

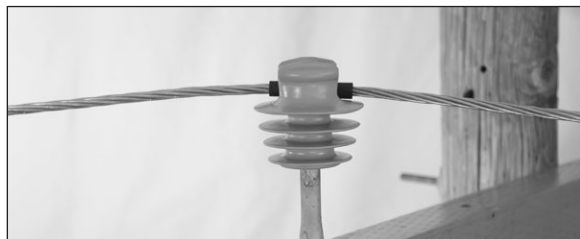
\*This Application Procedure is also applicable for EZ-WRAP Side Tie and Alloy Side Tie applications to (1) plastic jacketed conductor and (2) EZ-WRAP Side Tie and Alloy Side Tie applications without a tube. (When applying product per these conditions, simply disregard any instructions pertaining to the tube.)



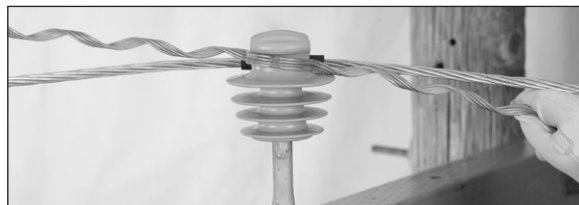
**EZ-WRAP Side Tie and Alloy Side Tie as received in the field.**

### HAND APPLICATION

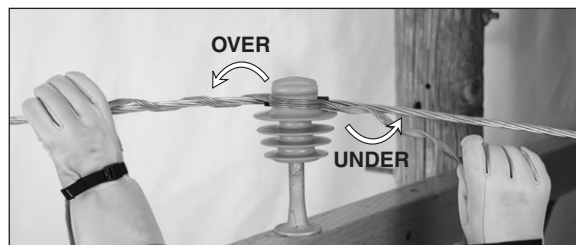
**STEP #1** Apply Tie Tube onto the conductor, with the slit facing away from the insulator, so that the conductor does not come into direct contact with the insulator.



**STEP #2** Align the EZ-WRAP Side Tie/Alloy Side Tie with the conductor. Make sure that the tie loop of the EZ-WRAP Side Tie/Alloy Side Tie is facing away from the conductor, as shown below.



**STEP #3** Place EZ-WRAP Side Tie/Alloy Side Tie in position and start wrapping the legs. Notice one leg goes over the conductor while the other goes under the conductor.



**STEP #4** Wrap on both legs completely, snapping the ends in place with thumb pressure. **MAKE SURE THAT THE TIE LOOP IS TIGHT ON THE INSULATOR NECK AND UNDER THE INSULATOR HEAD.**

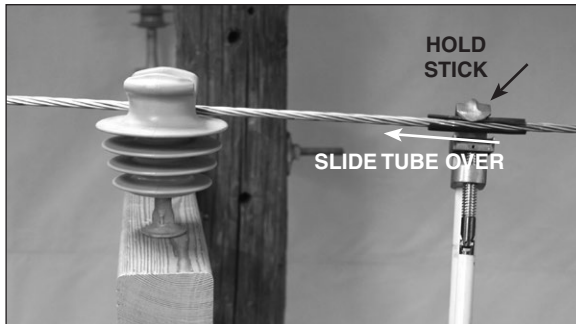


**STEP #5** Completed application of the EZ-WRAP® Side Tie/Alloy Side Tie shown below.



## HOT STICK APPLICATION

**STEP #1** Apply the Tie Tube onto the conductor, with the slit facing away from the insulator, using a hold stick. After applying the tube with the hold stick, slide the tube over until it rests evenly in the insulator groove.



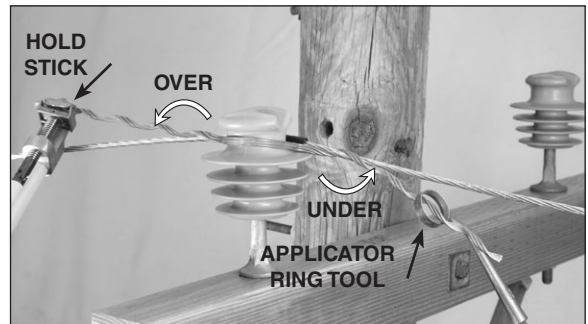
**STEP #2** You may need to lift the conductor with the aid of another hot stick. **Make sure that the slit in the Tie Tube is positioned away from the insulator surface.**



**STEP #3** Grasp the EZ-WRAP Side Tie/Alloy Side Tie with a hold stick and align it with the conductor. Make sure that the tie loop of the EZ-WRAP Side Tie/Alloy Side Tie is facing away from the conductor, as shown below.



**STEP #4** Place the Applicator Ring Tool over the other leg and wrap the leg into place. Make sure to snap in the end completely.



**STEP #5** Again, using the Applicator Ring Tool, wrap the remaining leg into place.



**STEP #6** Make sure to snap the end of the leg into place. MAKE SURE THAT THE TIE LOOP IS TIGHT ON THE INSULATOR NECK AND UNDER THE INSULATOR HEAD.



**STEP #7** Completed application of the EZ-WRAP® Side Tie/Alloy Side Tie shown below.



## SAFETY CONSIDERATIONS

This application procedure is not intended to supersede any company construction or safety standards. This procedure is offered only to illustrate safe application for the individual. **FAILURE TO FOLLOW THESE PROCEDURES MAY RESULT IN PERSONAL INJURY OR DEATH.**

**Do not modify this product under any circumstances.**

This product is intended for use by trained technicians only. **This product should not be used by anyone who is not familiar with, and not trained to use it.**

When working in the area of energized lines, extra care should be taken to prevent accidental electrical contact.

For proper performance and personal safety, be sure to select the proper size PREFORMED™ product before application.

PREFORMED products are precision devices. To insure proper performance, they should be stored in cartons under cover and handled carefully.



# PREFORMED LINE PRODUCTS

P.O. Box 91129, Cleveland, Ohio 44101 • 440.461.5200 • [www.preformed.com](http://www.preformed.com) • e-mail: [inquiries@preformed.com](mailto:inquiries@preformed.com)

SP2831-2