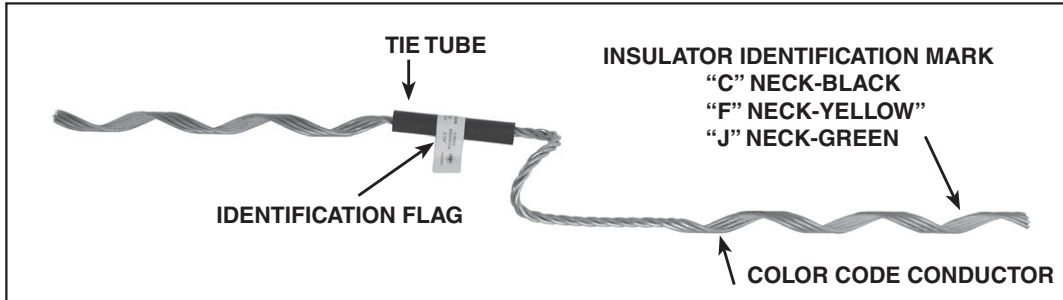




Alloy Top Tie

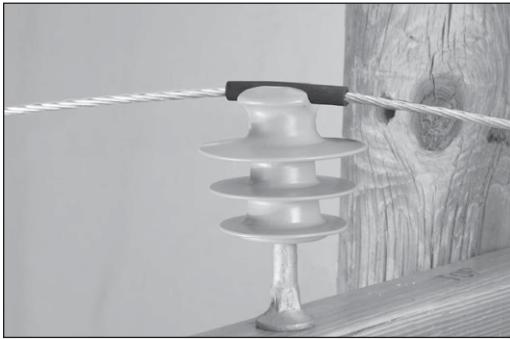
For Top Groove, Single Insulator Installations

Be sure to read and completely understand this procedure before applying product. Be sure to select the proper PREFORMED™ product before application.

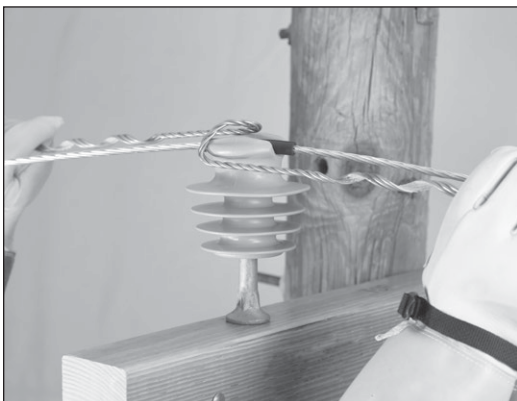


HAND APPLICATION

Step #1 Apply the tie pad to the conductor slit facing up, so that the conductor does not come into direct contact with the insulator.



Step #2 Align the Alloy Top Tie with the conductor as shown below, so that both legs are parallel to the conductor.



Step #3 Rotate the Alloy Top Tie in a counterclockwise direction. Make sure that both legs rotate **under** the conductor, as shown below. This **must be done** to ensure that the conductor is secured to the insulator.

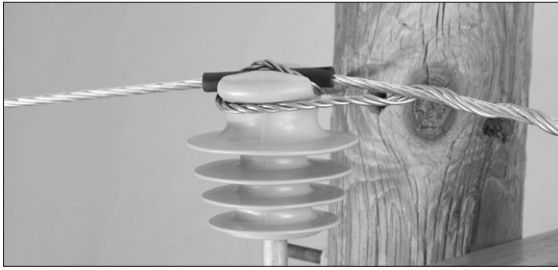
Continue to rotate the legs counterclockwise until they are approximately perpendicular to the conductor. Make sure that the center section of the tie is secure over the tie pad.



Step #4 Wrap the first leg (closest to you) tightly around the neck of the insulator. **Make sure that the tie is firmly seated under the insulator ear.** See arrow below.



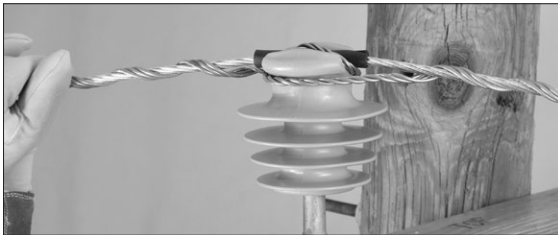
Step #5 Continue to apply the first leg to completion. Make sure to snap the end of the leg into place.



Step #7 Completed application of the PREFORMED™ Alloy Top Tie, as shown below.



Step #6 Wrap the other leg of the Alloy Top Tie around the neck of the insulator. ***Make sure that the tie is firmly seated under the insulator ear.*** Wrap on the other leg of the Alloy Top Tie, as shown below. ***Make sure to snap the end of the leg into place and that the tie loop is tight on the insulator neck and under the insulator ear.***



HOT STICK APPLICATION

Step #1 Apply the tie pad to the conductor, slit facing up, so that the conductor does not come into direct contact with the insulator. This can be accomplished using a jumper holding tool, ring stick or other hot stick that can hold the tube open.

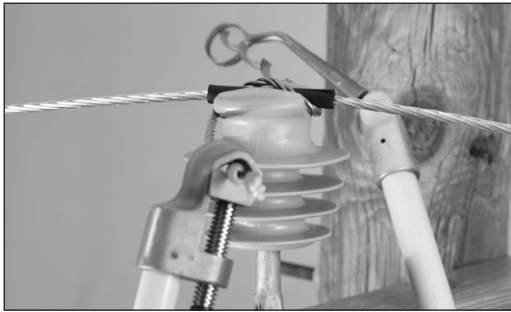
After applying the pad, slide the pad over until it rests evenly in the insulator groove. You may need to lift the conductor with the aid of another hot stick.



Step #2 Align the Alloy Top Tie with the conductor as shown below, so that both legs are parallel to the conductor.



Step #3 Rotate the Alloy Top Tie in a counterclockwise direction. ***Make sure that both legs rotate under the conductor as shown below.*** This ***must*** be done to ensure the conductor is secure to the insulator. Continue to rotate the legs counterclockwise one quarter turn until the legs are perpendicular to the conductor and the center section is secure over the tie pad.



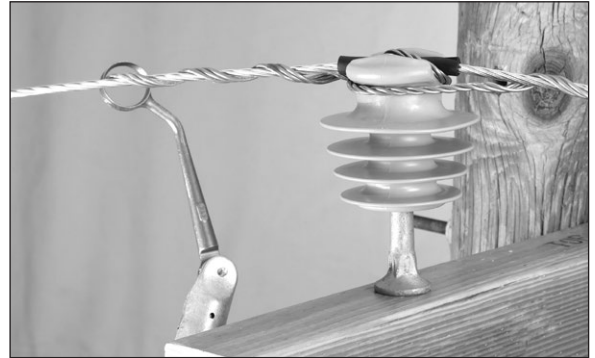
Step #4 Using the Applicator Ring Tool, wrap the first leg tightly around the neck of the insulator. ***Make sure that the tie is firmly seated under the insulator ear.***



Step #5 Continue wrapping to completion. Make sure to snap the end of the leg into place.



Step #6 Repeat Steps 4 and 5 on the second leg.



Step #7 Completed application of the PREFORMED™ Alloy Top Tie, as shown below.



SAFETY CONSIDERATIONS

This application procedure is not intended to supersede any company construction or safety standards. This procedure is offered only to illustrate safe application for the individual. **FAILURE TO FOLLOW THESE PROCEDURES MAY RESULT IN PERSONAL INJURY OR DEATH.**

Do not modify this product under any circumstances.

This product is intended for use by trained technicians only. **This product should not be used by anyone who is not familiar with, and not trained to use it.**

When working in the area of energized lines, extra care should be taken to prevent accidental electrical contact.

For proper performance and personal safety, be sure to select the proper size PREFORMED product before application.

PREFORMED products are precision devices. To insure proper performance, they should be stored in cartons under cover and handled carefully.



PREFORMED LINE PRODUCTS

P.O. Box 91129, Cleveland, Ohio 44101 • 440.461.5200 • www.preformed.com • e-mail: inquiries@preformed.com

SP2668-2