



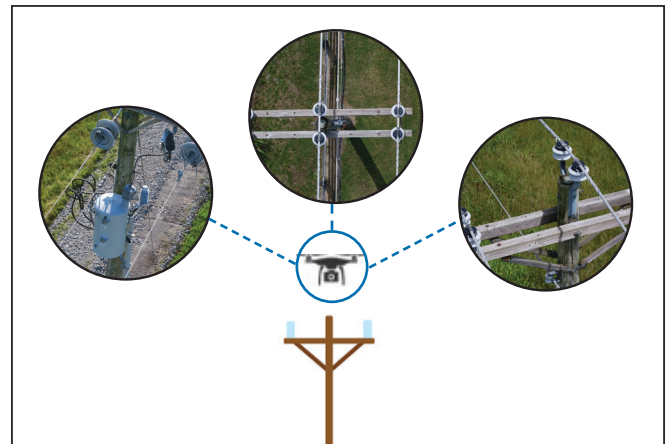
## Level 2 Distribution Line Inspections

Preformed Line Products (PLP) is offering electric utilities a safer and more efficient asset management and inspection service compared to traditional methods. PLP's Level 2 Distribution Line Inspection focuses on identifying and recording Reliability Concerns that are visible from aerial vantage points. A Level 2 aerial inspection enhances ground-based inspections to provide an overall assessment of the power line's asset health.

Common Reliability Concerns detected by aerial imagery include damage and wear on the top of poles, cross arms, insulators, conductor ties, arresters, disconnects, transformers, and other equipment. These types of anomalies may not be visible or recorded during a traditional ground-based inspection.

### Features:

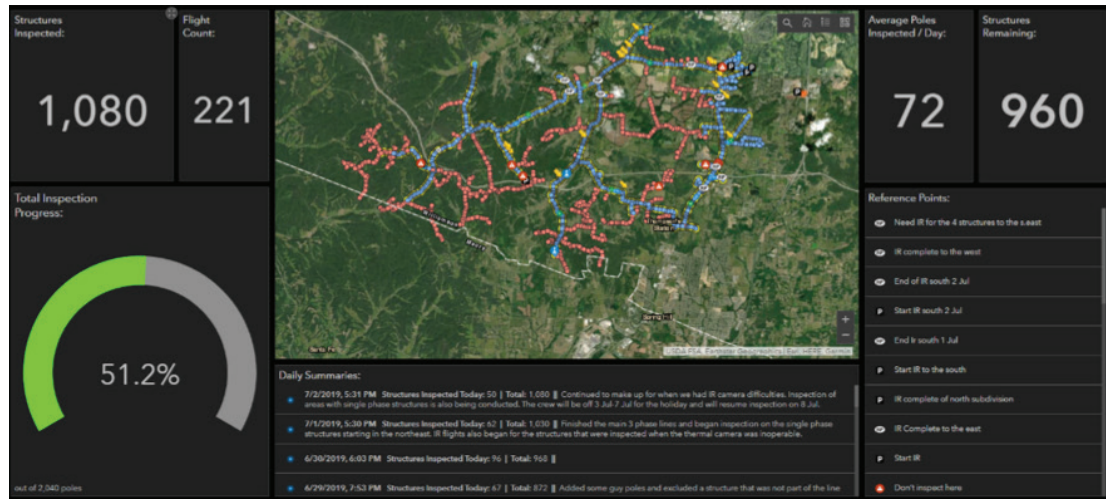
- High-Resolution E/O and IR aerial imagery
- Identification and record of anomalies detected by aerial imagery
- Classification of anomalies by PLP's industry-experienced engineers
- Identified hot spots analyzed by certified thermographers
- Secure data management and delivery
- Interactive mapped results
- Detailed reporting



Aerial Data Collection Process



# Advanced Data Analytics and Reporting

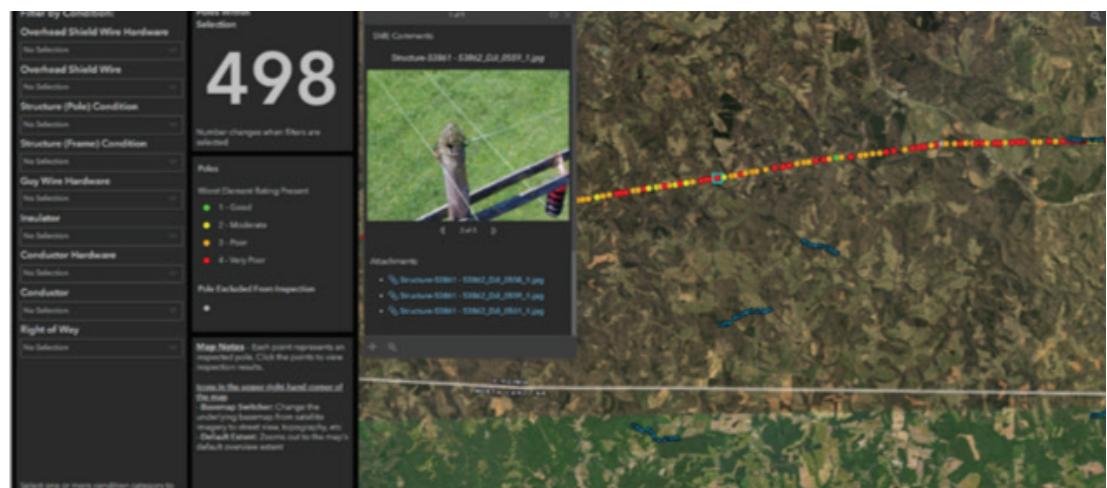


Real-time Inspection Dashboard

The Detailed Inspection Results table provides a comprehensive overview of the inspection data. It includes columns for Structure ID, Date, Time, and various inspection metrics. The table is color-coded to indicate the status of each structure, with green representing 'Good', yellow representing 'Minor Issues', and red representing 'Major Issues'.

Structure ID	Date	Time	Inspection Status	Notes
1001	7/2/2019	5:31 PM	Good	Continued to make up for when we had IR camera difficulties.
1002	7/2/2019	5:30 PM	Minor Issues	Finished the main 3 phase lines and began inspection on the single phase structures starting in the northeast.
1003	7/2/2019	6:02 PM	Major Issues	Added some guy poles and excluded a structure that was not part of the line.

Detailed Inspection Results



Interactive GIS-Mapped Results



Global Headquarters  
660 Beta Drive  
Cleveland, Ohio 44143

Mailing Address:  
P.O. Box 91129  
Cleveland, Ohio 44101

Telephone: 440.461.5200  
Fax: 440.442.8816  
Website: [preformed.com](http://preformed.com)  
Email: [inquiries@preformed.com](mailto:inquiries@preformed.com)

© 2020 Preformed Line Products  
Printed in U.S.A.  
EN-ML-1299  
06.20.1H



**INSPECTION  
SERVICES**