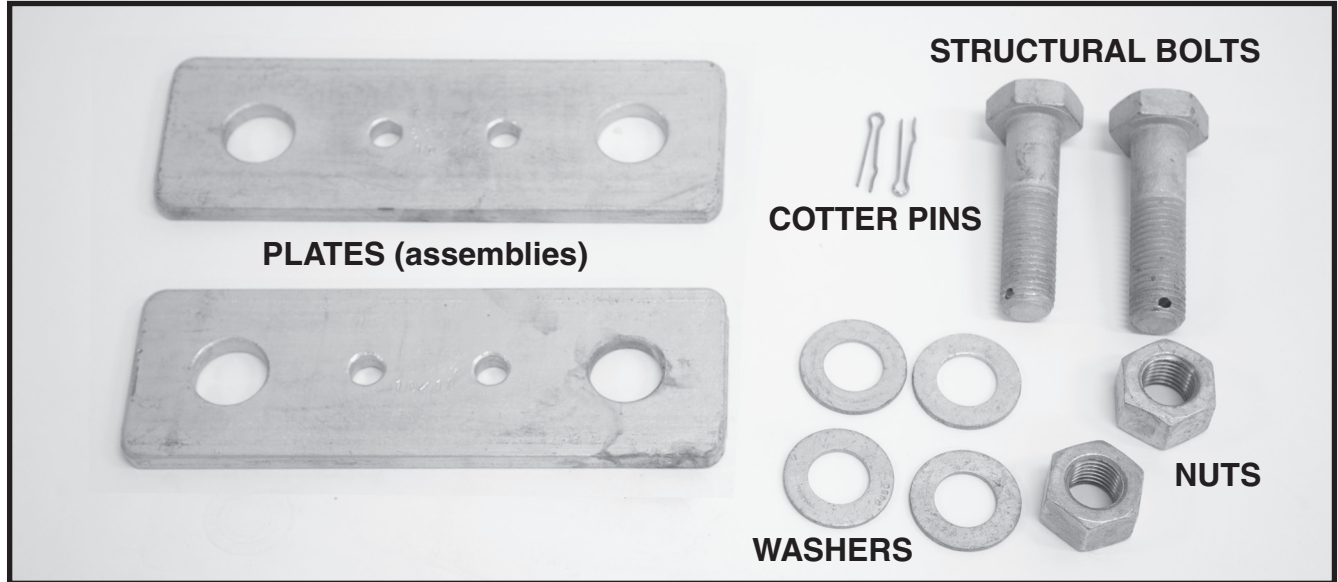




VARI-GRIP™ LINK PLATES

Be sure to read and completely understand this procedure before applying product. Be sure to select the proper PREFORMED™ product before application.

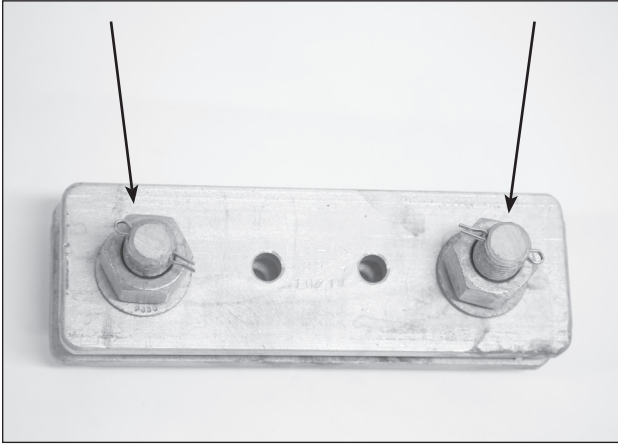
NOMENCLATURE



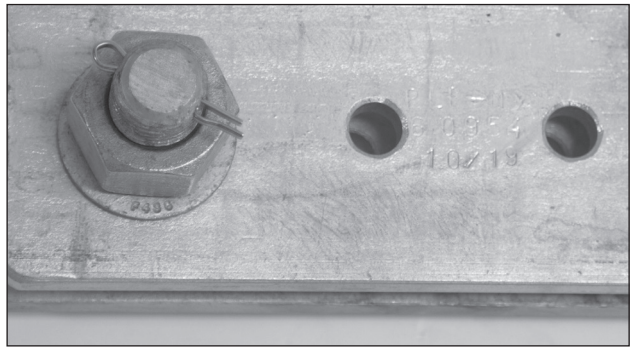
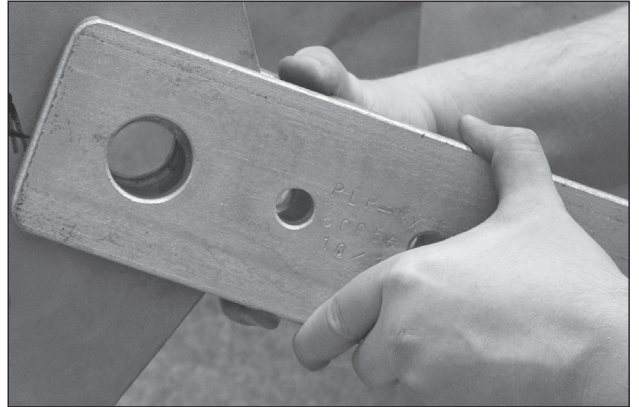
	Catalog Number					
	VLP-0600	VLP-0601	VLP-0603	VLP-0605	VLP-0606	VLP-0607
Max. Strength Rating	42,400 lbs.	80,000 lbs.	108,000 lbs.	156,000 lbs.	192,000 lbs.	252,000 lbs.
Strand Size	EHS 7/16" EHS 1/2" EHS 9/16" EHS 5/8"	EHS 3/4" BS 3/4" EHS 7/8" BS 13/16"	BS 7/8" EHS 1" BS 15/16"	BS 1" BS 1-1/16" EHS 1-1/8" BS 1-1/8"	BS 1-3/16" EHS 1-1/4" BS 1-1/4"	BS 1-5/16" BS 1-3/8" BS 1-7/16"
Conformal Casting	N/A	N/A	N/A	Yes	Yes	Yes
U-bolt Size	5/8"-3/4"	1"	1-1/8"	1-1/2"	1-1/2"	1-3/4"
Thru hole Diameter	1"	1-1/2"	1-1/2"	1-7/8"	2-3/8"	2-3/8"
Structural Bolt Diameter	7/8"	1-1/4"	1-3/8"	1-3/4"	2"	2-1/4"

Please be sure to read and understand VARI-GRIP Application procedure SP2037-7 before the installation of this product. This product is intended for use with PLP's VARI-GRIP Dead-end.

Step #1 Remove the larger bolts from the VARI-GRIP™ Link Plate assemblies.



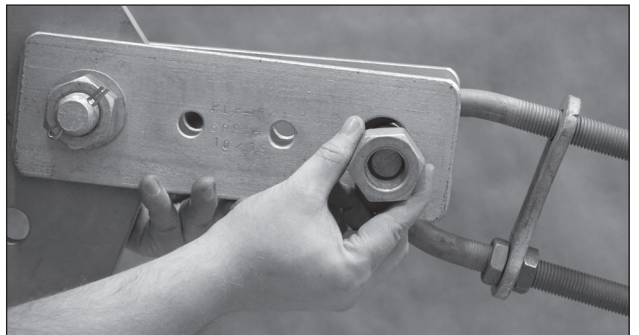
Step #2 Line up one of the larger holes with the anchoring hardware and insert the bolt through both link plate then install the nut. Be sure that the plate markings are facing outward.



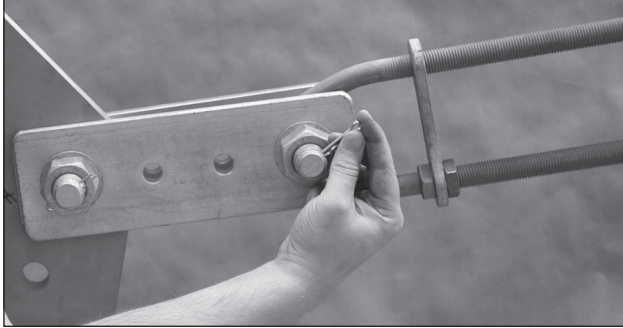
PLP Tip The larger sizes will require pre-assembled plates. For the pre-assembled plates, the smaller bolts holding the plates together **are not to** be removed or modified in any way.



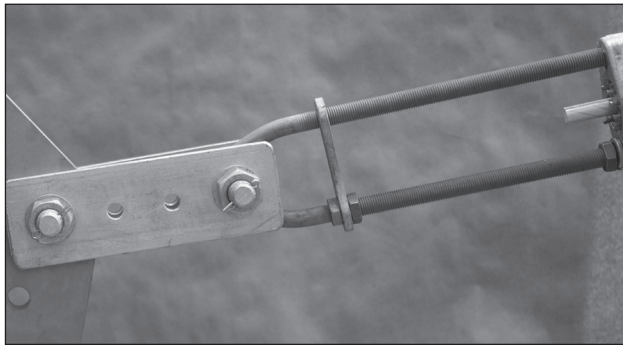
Step #3 Insert U-bolt or U-bolt with conformal casting between plate assemblies. Bolt to be installed in hole of conformal casting. Line up the holes and bolt and install the bolt, washers, and nut.



Step #4 Tighten nut and bolt and fully insert the cotter pin. Ensure that plates are parallel to each other and that the head of the bolt is tight against washer and plate.



Step #5 Install the VARI-GRIP™ Dead-end according to the steps listed in SP2037-7 completely.



Installation Guidelines

This procedure is an aid to installation and does not imply any design considerations.

VARI-GRIP Dead-ends should only be used on the size and type of strand for which they are designed. Lay direction of both the VARI-GRIP dead end and the guy strand should be the same.

SAFETY CONSIDERATIONS

This application procedure is not intended to supersede any company construction or safety standards. This procedure is offered only to illustrate safe application for the individual.

Failure to follow these procedures may result in personal injury or death.

Do not reuse or modify this product under any circumstances.

This product is intended for use by trained technicians only. **This product should not be used by anyone who is not familiar with, and not trained to use it.**

When working in the area of energized lines, extra care should be taken to prevent accidental electrical contact.

For proper performance and personal safety, be sure to select the proper size PREFORMED™ product before application.

PREFORMED products are precision devices. To ensure proper performance, they should be stored in cartons under cover and handled carefully.



PREFORMED LINE PRODUCTS

P.O. Box 91129, Cleveland, Ohio 44101 • 440.461.5200 • preformed.com • email: inquiries@preformed.com
SP3544