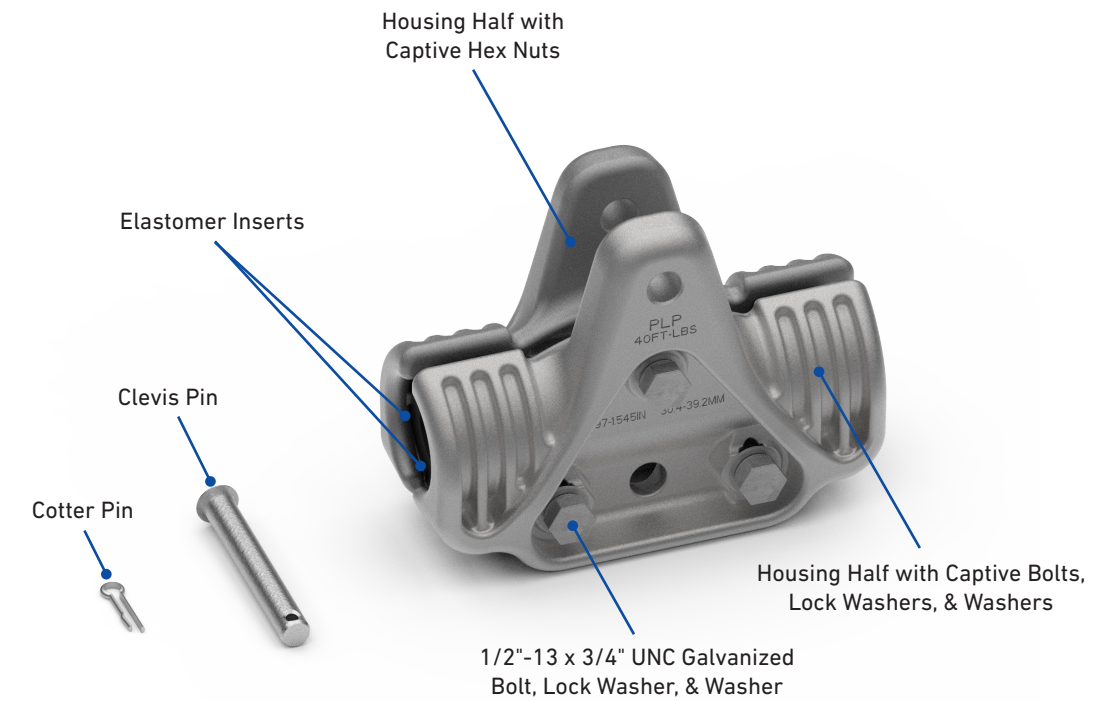


COMPONENTS



HOLDING STRENGTHS AND LINE ANGLES

Characteristic	Specification
Unbalanced/Slip Load	10% – 15% of conductor rated breaking strength
Maximum Vertical Load	25,000 lb
Maximum Line Angle	35 degrees for single suspension; 70 degrees for double suspension

ACCESSORIES

Catalog Number	Suffix Code	Description
YC-5212	YC	25,000 lb Y-Clevis Eye
CE-5107	CE	25,000 lb Clevis Eye
SE-5156	SE	25,000 lb Clevis Eye
YP-5907	-	30,000 lb 12" Yoke Plate - For Double Cushion Suspensions only

CUSHION-GRIP® SUSPENSION – HT250

The CUSHION-GRIP Suspension – HT250 is designed for use on all aluminum-based conductors where a continuous operating temperature of 250°C is required. The design utilizes elastomer cushion inserts that significantly reduce static and dynamic bending stresses on the conductor at the attachment point. Additionally, fully captive hardware reduces the time and effort required for installation.

FEATURES AND BENEFITS

- Field-proven elastomer cushions protect the conductor against abrasion, wear, and fatigue
- Shipped fully assembled with no loose parts to avoid lost hardware
- Armor Rods are not necessary for installation; strain relief relies solely on cushion inserts
- All fasteners are factory installed and captive, eliminating lost hardware in the field
- One-piece design allows the suspension to be installed over the conductor by simply loosening the captive fasteners and spreading the assembly open
- Rated for EHV/UHV operation without additional hardware (reach out to PLP for more info)
- Rated for up to 250°C continuous operating temperatures
- Compatible with standard attachment hardware
- Easy hot stick application - lower captive fasteners act as a hinge to facilitate hot stick application

ORDERING INFORMATION

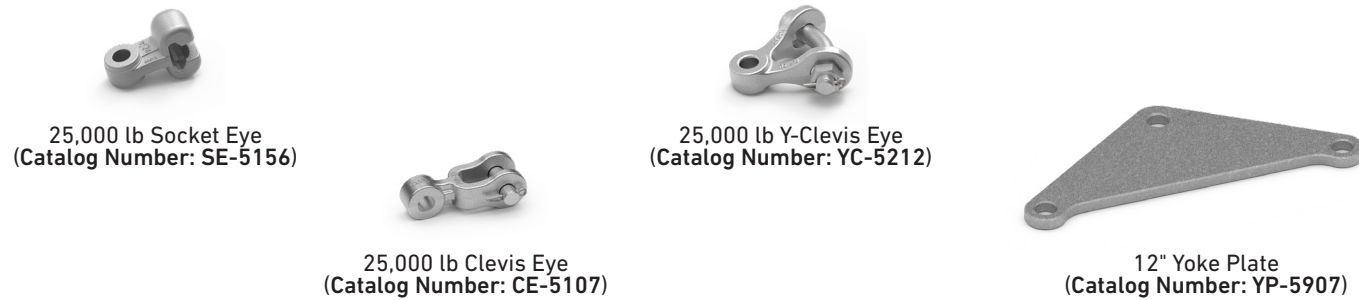
CUSHION-GRIP Suspension – HT250

Catalog Number	Conductor Diameter Range		Vertical Maximum Load	
	in	mm	lb	kN
CGS-1096HT250	0.609 – 0.883	15.5 – 22.4	25,000	111
CGS-1097HT250	0.884 – 1.196	22.5 – 30.4	25,000	111
CGS-1098HT250	1.197 – 1.545	30.5 – 39.2	25,000	111

- Select the appropriate catalog number for the CUSHION-GRIP Suspension from the table below based on the diameter of the conductor.
- Add the suffix code **BNK** to the CUSHION-GRIP Suspension catalog number to include a bolt, nut, and cotter pin instead of a clevis pin and cotter pin (**Example: Catalog Number: CGS-1097HT250BNK**).
- Add the appropriate suffix code(s) to the CUSHION-GRIP Suspension catalog number to include attachment fittings (**Example: Catalog Number: CGS-1097HT250YC, CGS-1097HT250CE, or CGS-1097HT250SE**). See ACCESSORIES for suffix codes.
- When adding suffix codes to the CUSHION-GRIP Suspension catalog number, make sure that the suffix code for the bolt, nut, and cotter pin comes **before** the suffix code(s) for the attachment fittings (**Example: Catalog Number: CGS-1097HT250BNKYC**).
- For Double Cushion Suspension applications, order two identical cushion suspensions, a yoke plate, an attachment fitting to connect the yoke plate to the structure, and two identical attachment fittings to connect the suspensions to the yoke plate.

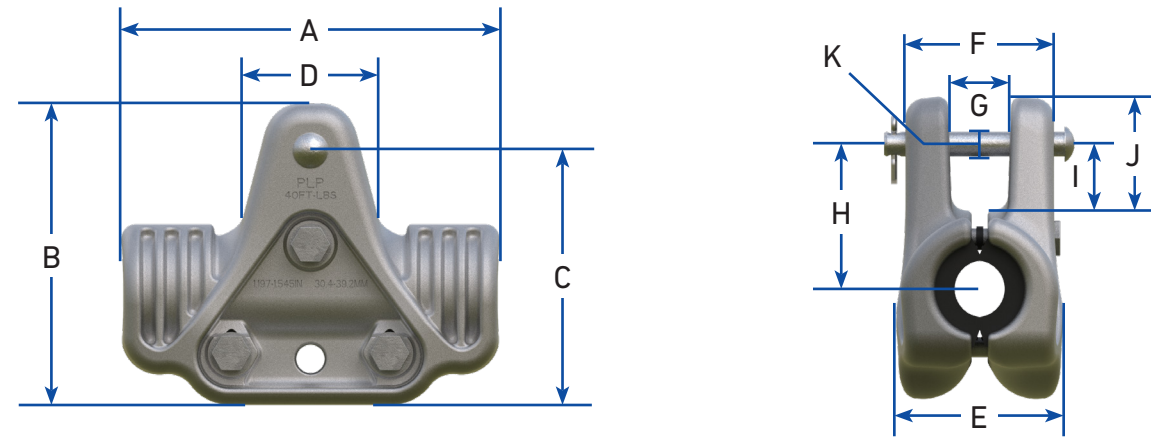
ATTACHMENT FITTINGS

- An additional Socket Eye (**Catalog Number: SE-5156**) can be included with single suspension.
- An additional Y-Clevis Eye (**Catalog Number: YC-5212**) or Clevis Eye (**Catalog Number: CE-5107**) can be included with single suspension.
- A Yoke Plate (**Catalog Number: YP-5907**) and two Clevis Eyes (**Catalog Number: CE-5107**) can be ordered separately for double suspensions.



DIMENSIONS

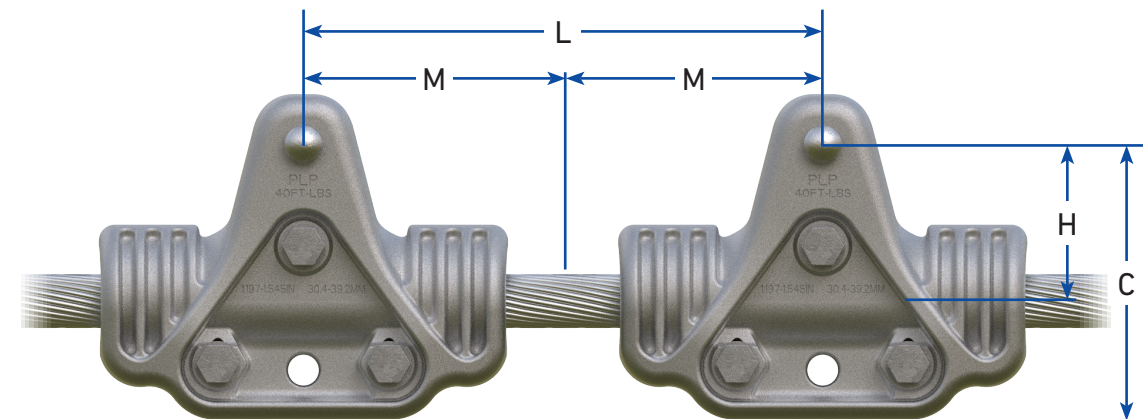
Single CUSHION-GRIP Suspension



Single CUSHION-GRIP Suspension

Catalog Number	Dimensions										
	in (mm)										
	A	B	C	D	E	F	G	H	I	J	K
CGS-1096HT250	7-1/2 (190.5)	6-7/16 (163.5)	5-1/4 (133.4)	2-3/4 (69.9)	3-9/16 (91.3)	3-11/16 (94.0)	1-3/16 (30.2)	3-1/4 (82.6)	1-5/8 (41.3)	2-15/16 (74.6)	5/8 (15.9)
CGS-1097HT250	8-1/4 (209.6)	7-1/8 (181.0)	5-15/16 (150.8)	2-13/16 (71.4)	3-5/8 (92.1)	3-23/32 (94.2)	1-3/16 (30.2)	3-5/16 (84.1)	1-5/8 (41.3)	2-15/16 (74.6)	5/8 (15.9)
CGS-1098HT250	9-1/2 (241.3)	7-1/2 (190.5)	6-5/16 (160.3)	3-13/16 (96.8)	4-5/32 (105.5)	3-23/32 (94.2)	1-3/16 (30.2)	3-5/8 (92.1)	1-5/8 (41.3)	2-15/16 (74.6)	5/8 (15.9)

Double CUSHION-GRIP Suspension

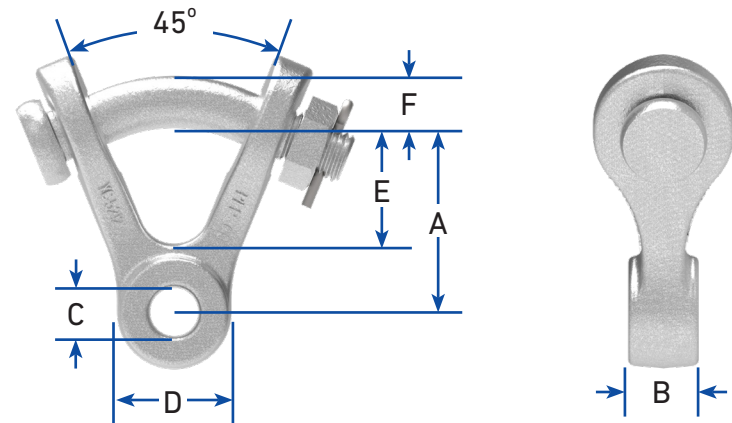


Double CUSHION-GRIP Suspension

Catalog Number	Dimensions			
	in (mm)			
	C	H	L	M
CGS-1096HT250	5-1/4 (133.4)	3-1/4 (82.6)	12 (304.8)	6 (152.4)
CGS-1097HT250	5-15/16 (150.8)	3-5/16 (84.1)	12 (304.8)	6 (152.4)
CGS-1098HT250	6-5/16 (160.3)	3-5/8 (92.1)	12 (304.8)	6 (152.4)

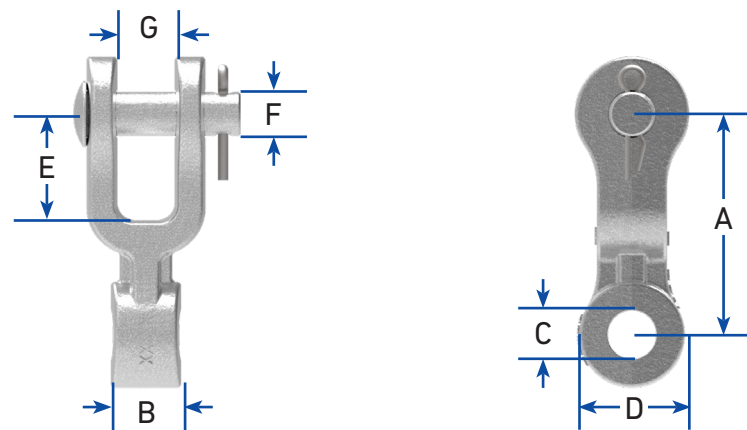
DIMENSIONS

Hardware Fittings



Y-Clevis Eye

Catalog Number	Dimensions						Maximum Vertical Load lb
	in (mm)						
	A	B	C	D	E	F	
YC-5212	2-1/2 (63.5)	1 (25.4)	11/16 (17.5)	1-5/8 (41.3)	1-1/2 (38.1)	3/4 (19.1)	25,000



Clevis Eye

Catalog Number	Dimensions							Maximum Vertical Load lb
	in (mm)							
	A	B	C	D	E	F	G	
CE-5107	3-1/8 (79.4)	1 (25.4)	11/16 (17.5)	1-1/2 (38.1)	1-1/2 (38.1)	5/8 (15.9)	13/16 (20.6)	25,000

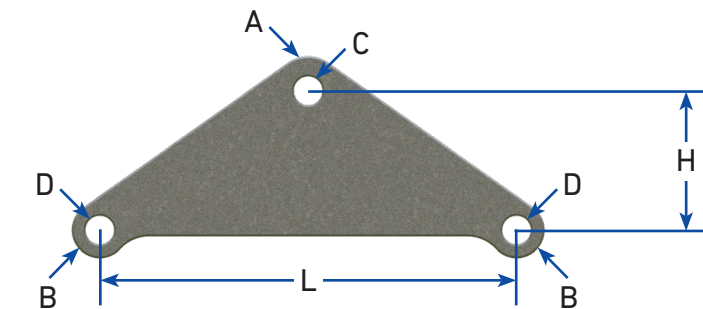
DIMENSIONS

Hardware Fittings



Socket Eye

Catalog Number	Dimensions				Maximum Vertical Load lb	For Use with Insulators ANSI Class Spec C-29.2-71
	in (mm)					
	A	B	C	D		
SE-5156	1-15/16 (49.0)	1 (25.4)	11/16 (17.5)	1-1/2 (38.1)	25,000	52-3 & 52-5



Yoke Plate

Catalog Number	Dimensions						Plate Thickness in (mm)	Maximum Vertical Load lb
	in (mm)							
	A (Radius)	B (Radius)	C (Diameter)	D (Diameter)	L	H		
YP-5907	1 (25.4)	13/16 (20.6)	13/16 (20.6)	13/16 (20.6)	12 (304.8)	4 (101.6)	1/2 (12.7)	30,000