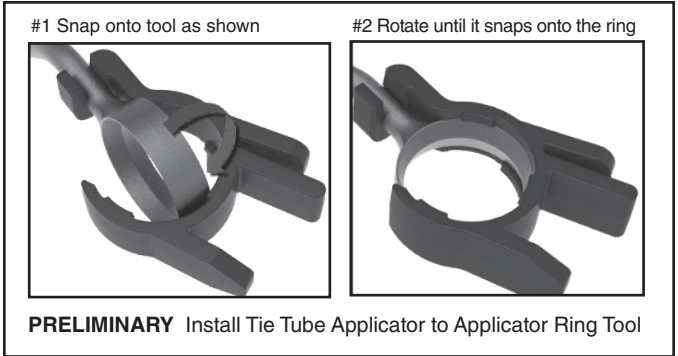
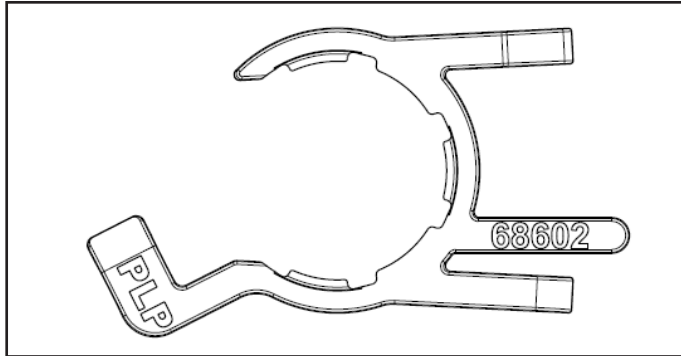


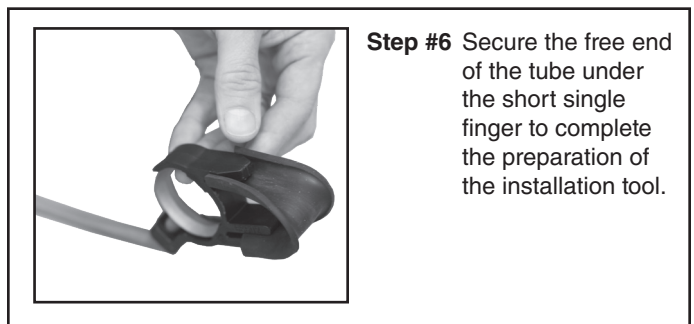
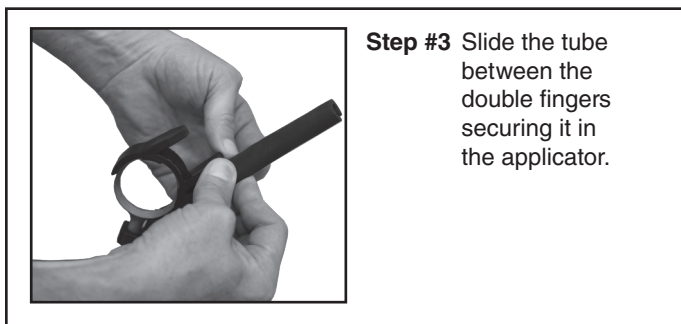
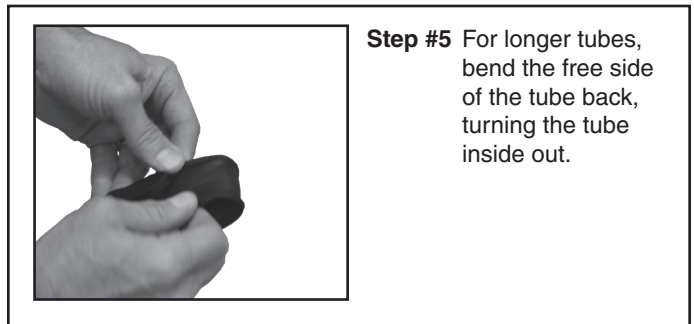
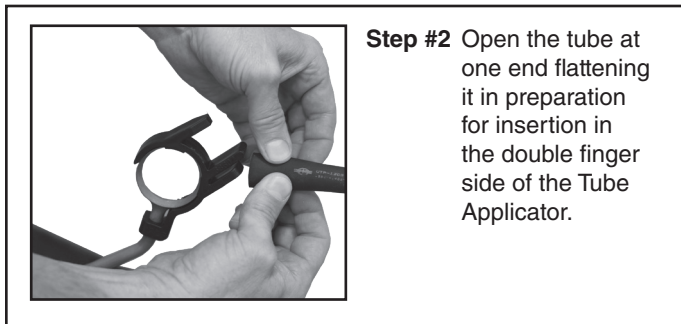
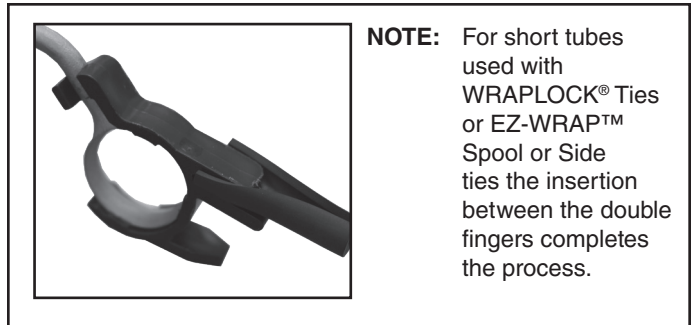
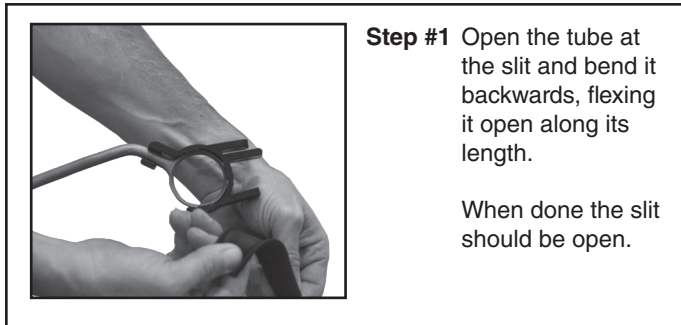


Tie Tube Applicator for Applicator Ring Tools

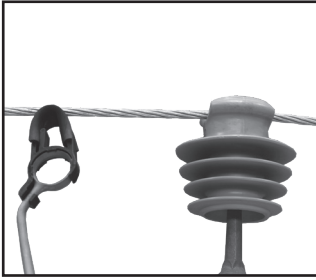
Be sure to read and completely understand this procedure before applying product. Be sure to select the proper PREFORMED™ product before installation.



PREPARE THE TIE TUBE



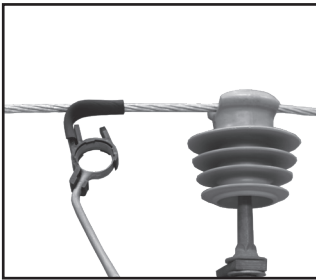
INSTALLATION OF THE TIE TUBE



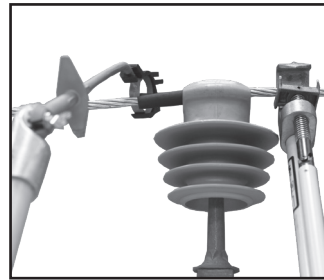
Step #1 Orient the tool with the single finger side toward the insulator. Push the open side of the tube onto the conductor by releasing from behind the single finger side.



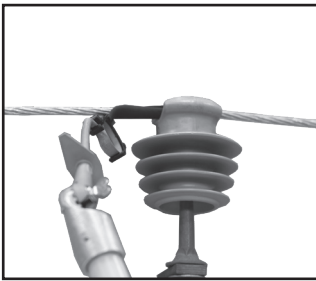
Step #4 It may be beneficial to have a pole buddy lift the conductor while the tube is pushed into place.



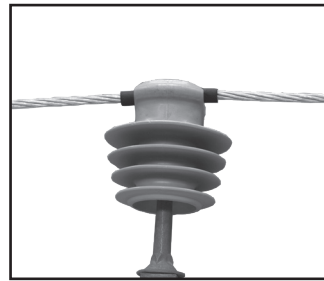
Step #2 With the tube partially on the conductor and still between the double fingers, slide it towards the insulator.



Step #5 Make sure the tube is in the correct orientation with the tube between the conductor and the insulator. Use an edge on the tool to push the tube into place.



Step #3 Using the tool push the tube into the interface between the conductor and the insulator.



Step #6 Ensure that the tube is in the proper position, centering it over the insulator.

SAFETY CONSIDERATIONS

This application procedure is not intended to supersede any company construction or safety standards. This procedure is offered only to illustrate safe application for the individual.

FAILURE TO FOLLOW THESE PROCEDURES MAY RESULT IN PERSONAL INJURY OR DEATH.

Do not modify this product under any circumstances.

This product is intended for use by trained technicians only. **This product should not be used by anyone who is not familiar with, and not trained to use it.**

When working in the area of energized lines, extra care should be taken to prevent accidental electrical contact. Be sure to wear proper safety equipment per your company protocol.

For proper performance and personal safety, be sure to select the proper size PREFORMED™ product before application.

PREFORMED products are precision devices. To ensure proper performance, they should be stored in cartons under cover and handled carefully.



PREFORMED LINE PRODUCTS

P.O. Box 91129, Cleveland, Ohio 44101 • 440.461.5200 • preformed.com • email: inquiries@preformed.com

SP3579