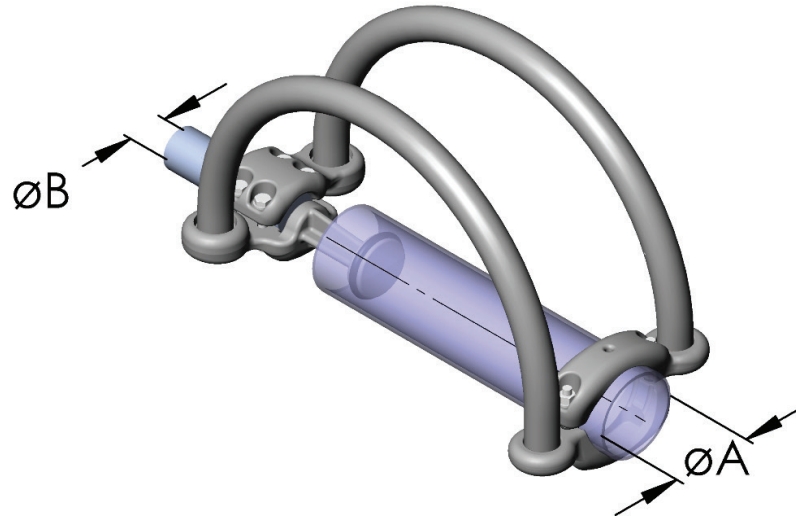


# Al-Straight expansion flat terminal

Tube sliding



Catalog Number	Voltage	ØA *	ØAi *	Height H	Flat Terminal		
					D	E	I
IXFK-060E	245 kV	60.3	52.3	0	100	100	25
IXFK-085E	245 kV	80	-	100	125	125	25
IXFK-089C	420 kV	89	74	0	125	125	40
IXFK-090B	245 kV	80	70	0	100	100	15
IXFK-096C	245 kV	100	-	100	125	125	47
IXFK-100E	420 kV	100	88	0	100	100	25
IXFK-102C	245 kV	100	88-90	92	125	125	40
IXFK-102F	420 kV	100	88-90	92	125	125	40
IXFK-111F	420 kV	100	88	0	125	125	24
IXFK-119E	420 kV	120	-	130	200	100	25
IXFK-119F	420 kV	120	-	130	200	100	25
IXFK-120B	245 kV	114-120	94-104	0	80	80	15
IXFK-120F	420 kV	114-120	104-110	0	100	100	25
IXFK-121C	420 kV	120	94-110	0	125	125	40
IXFK-121E	420 kV	114-120	94-104	0	125	125	40
IXFK-121F	420 kV	114-120	94-104	0	125	125	40
IXFK-124B	420 kV	120	-	130	100	100	20
IXFK-124E	420 kV	120	-	130	100	100	25
IXFK-128B	245 kV	120	-	130	125	125	25

\*Dimensions are in millimeters. Please specify exact diameter in case of order.

# Al-Straight expansion flat terminal

Tube sliding

Catalog Number	Voltage	ØA *	ØAi *	Height H	Flat Terminal		
					D	E	I
IXFK-143C	420 kV	141.3	120	0	125	125	35
IXFK-144E	550 kV	141.3	-	140	200	100	25
IXFK-145F	420 kV	141.3	120	0	125	125	25
IXFK-146C	420 kV	141.3	-	140	125	125	25
IXFK-146E	550 kV	141.3	-	140	125	125	25
IXFK-147E	550 kV	141.3	-	150	125	125	25
IXFK-166F	420 kV	160	148	0	125	125	25
IXFK-170E	420 kV	160	140-154	0	200	220	20
IXFK-255E	420 kV	250	234-240	0	200	100	25
IXFK-256E	420 kV	250	234-240	0	220	100	25

\*Dimensions are in millimeters. Please specify exact diameter in case of order.