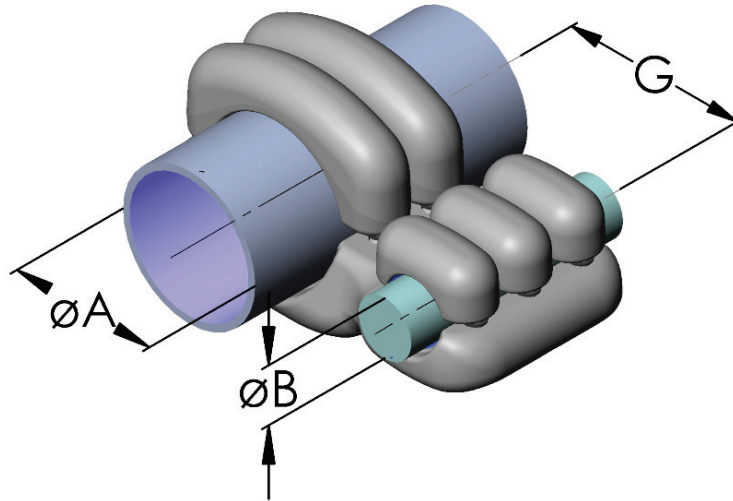


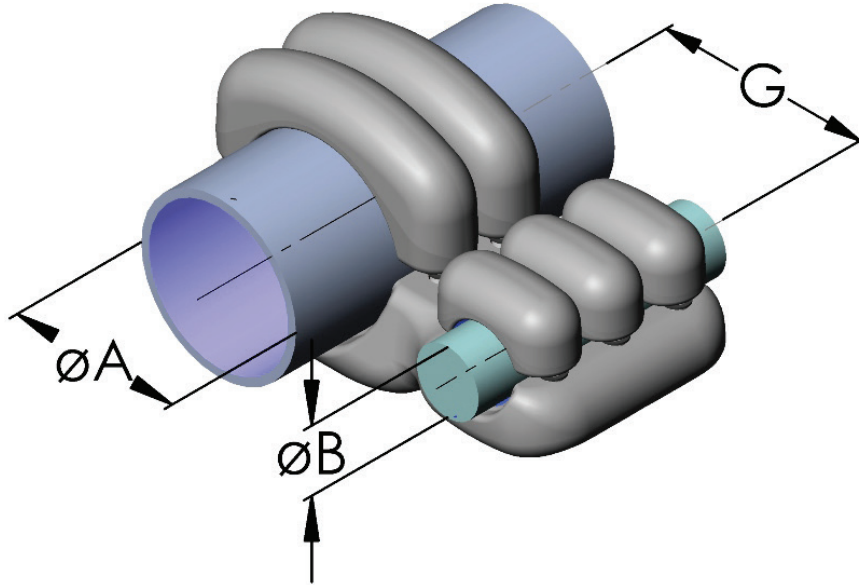
Al-Parallel Connector



Catalog Number	Voltage	ØA *	Covers A	ØB *	Covers B	Dimension G
H11K-043	245 kV	30,0-42,0	3	24,5-36,9	3	100
H11K-063	245 kV	60-63	2	22,0-33,0	3	72
H11K-064	420 kV	30-63	2	30,0-42,0	3	100
H11K-080	245 kV	80	2	30,0-42,0	3	110
H11K-081	245 kV	80	1	20,0-33,0	2	115
H11K-100	420 kV	100	2	30,0-40,0	4	120
H11K-102	245 kV	100	1	22,0-33,0	2	115
H11K-104	420 kV	100	2	28,5-44,0	3	125
H11K-120	245 kV	114,3-120	2	30,0-44,0	3	135
H11K-125	420 kV	120	2	22,0-32,0	3	125
H11K-141	245 kV	140-160	2	20,0-32,0	3	145
H11K-150	420 kV	150	2	30,0-40,0	4	145
H11K-252	245 kV	250	2	28,5-42,0	3	210
H11K-254	420 kV	250	2	35,0-37,0	3	200

*Dimensions are in millimeters. Please specify exact diameter in case of order.

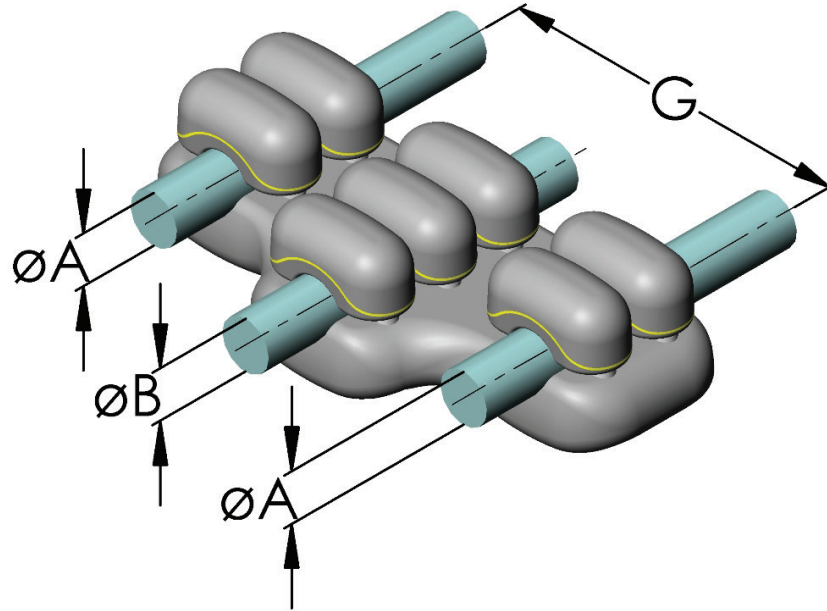
Al-Parallel Single/Single Connector



Catalog Number	Voltage	ØA *	"Covers A"	ØB *	"Screwpairs B"	"Bundle-spacing G"
H11K-043	245 kV	30,0-42,0	3	24,5-36,9	3	100
H11K-063	245 kV	60-63	2	22,0-33,0	3	72
H11K-064	420 kV	30-63	2	30,0-42,0	3	100
H11K-080	245 kV	80	2	30,0-42,0	3	110
H11K-081	245 kV	80	1	20,0-33,0	2	115
H11K-100	420 kV	100	2	30,0-40,0	4	120
H11K-102	245 kV	100	1	22,0-33,0	2	115
H11K-104	420 kV	100	2	28,5-44,0	3	125
H11K-120	245 kV	114,3-120	2	30,0-44,0	3	135
H11K-125	420 kV	120	2	22,0-32,0	3	125
H11K-141	245 kV	140-160	2	20,0-32,0	3	145
H11K-150	420 kV	150	2	30,0-40,0	4	145
H11K-252	245 kV	250	2	28,5-42,0	3	210
H11K-254	420 kV	250	2	35,0-37,0	3	200

*Dimensions are in millimeters. Please specify exact diameter in case of order.

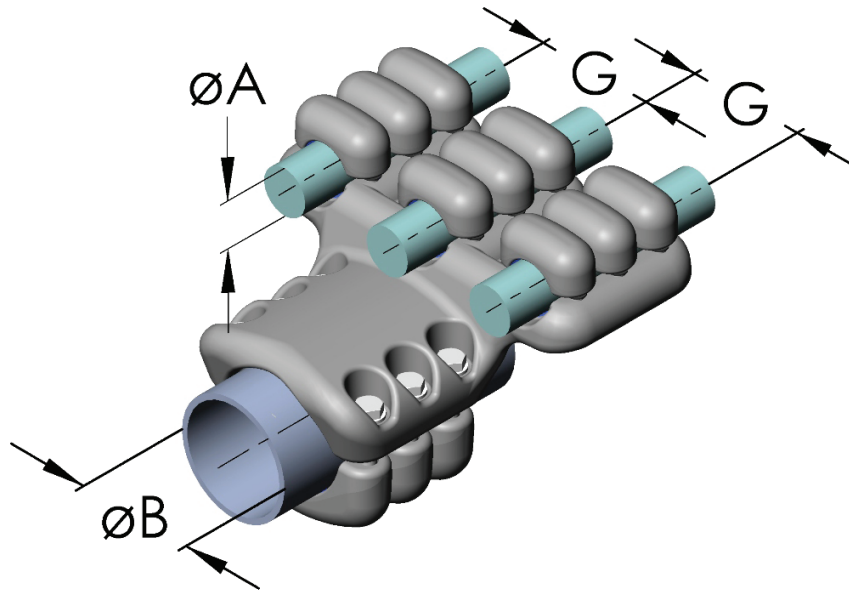
Al-Parallel duplex/single connector



Catalog Number	Voltage	ØA *	Covers A	ØB *	Covers B	"Bundle-spacing G"
H21K-034	245 kV	30,0-44,0	1	16,0-24,0	2	200
H21K-043	420 kV	30,0-44,0	2	30,0-44,0	3	200
H21K-063	550 kV	40,0-52,0	2	50-63	2	400
H21K-104	420 kV	35,0-44,0	3	100	2	400
H21K-125	420 kV	22,0-32,0	3	120-125	2	250
H21K-141	420 kV	28,5-44,0	3	141	2	200
H21K-150	420 kV	30,0-40,0	4	150	2	290
H21K-254	420 kV	35,0-44,0	3	250	2	400

*Dimensions are in millimeters. Please specify exact diameter in case of order.

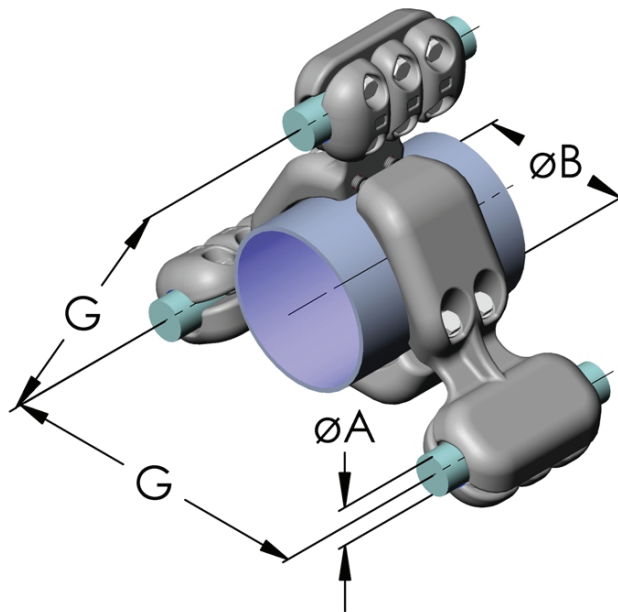
AI-Parallel triplex/single connector



Catalog Number	Voltage	ØA *	Covers A	ØB *	Covers B	"Bundle-spacing G"
H31K-100	420 kV	30,0-44,0	3	100	2	100
H31K-141	550 kV	36,9-44,0	2	141	2	200
H31K-523	420 kV	30,6-32,6	2	120	2	100
H31K-524	420 kV	38,6-40,4	3	120	2	100

*Dimensions are in millimeters. Please specify exact diameter in case of order.

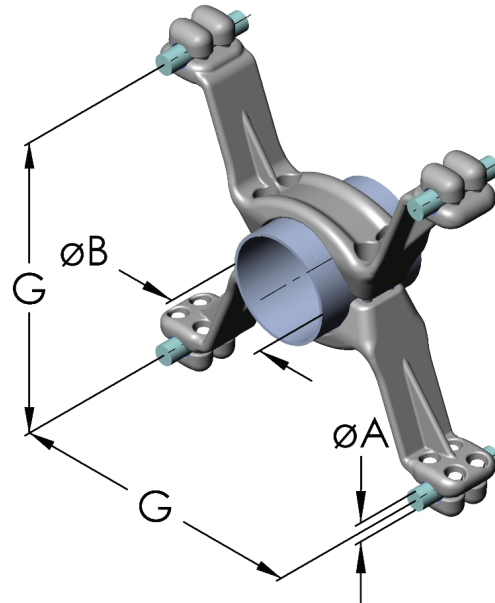
Al-Parallel triplex/single connector



Catalog Number	Voltage	ØA *	Covers A	ØB *	Screwpairs B	Bundle-spacing G
I31K-141	550 kV	22,0-33,0	2	140-141,3	2	457
I31K-330	550 kV	30,0-42,0	3	160-168,2	2	330

*Dimensions are in millimeters. Please specify exact diameter in case of order.

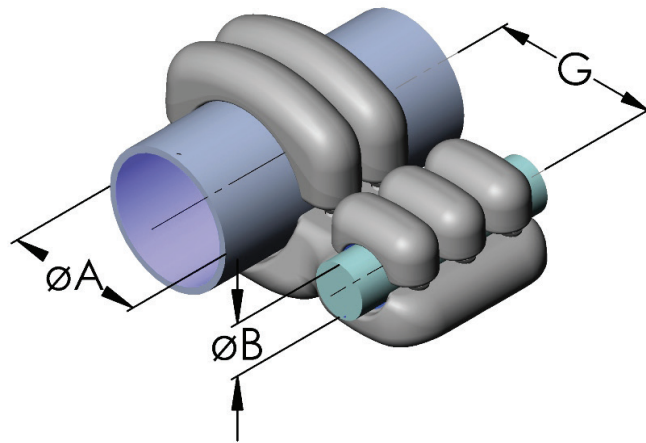
Al-Parallel quadruple/single connector



Catalog Number	Voltage	ØA *	Covers A	ØB *	Screwpairs B	Bundle-spacing G
I41K-061	550 kV	20,3-33,8	2	40-62	2	200
I41K-062	550 kV	30,0-42,0	3	50-62	2	200
I41K-063	550 kV	40,0-52,0	3	50-62	3	200
I41K-064	550 kV	20,3-33,8	2	30-63	2	200
I41K-065	550 kV	20,3-33,8	2	30-63	2	100
I41K-100	550 kV	30,0-44,0	3	100	3	200
I41K-120	550 kV	20,3-33,8	2	120	2	200
I41K-140	420 kV	18,3-33,8	2	140-160	2	457
I41K-141	550 kV	30,0-42,0	2	140-141,3	2	200
I41K-150	245 kV	30,0-42,0	3	160	2	110
I41K-160	550 kV	30,0-42,0	3	160	2	150
I41K-161	420 kV	30,0-42,0	2	160	2	200
I41K-162	550 kV	20,0-33,0	2	160	2	200
I41K-163	420 kV	35,0-42,0	3	160	2	100
I41K-250	550 kV	30,0-42,0	3	250	2	200
I41K-251	550 kV	22,0-32,0	2	250	2	200
I41K-252	550 kV	22,0-32,0	2	250	2	200
I41K-400	550 kV	30-63	2	28,0-33,0	2	400

*Dimensions are in millimeters. Please specify exact diameter in case of order.

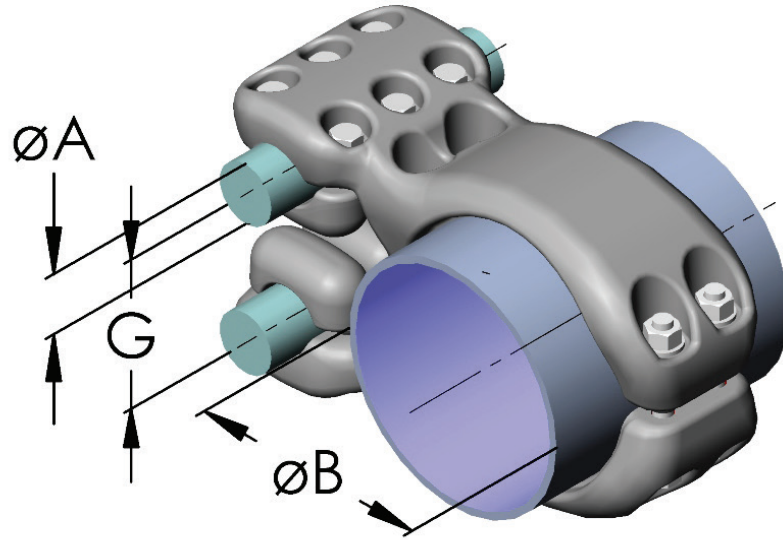
Al-Parallel connector



Catalog Number	Voltage	ØA *	Covers A	ØB *	Covers B	Dimension G
H11K-043	245 kV	30,0-42,0	3	24,5-36,9	3	100
H11K-063	245 kV	60-63	2	22,0-33,0	3	72
H11K-064	420 kV	30-63	2	30,0-42,0	3	100
H11K-080	245 kV	80	2	30,0-42,0	3	110
H11K-081	245 kV	80	1	20,0-33,0	2	115
H11K-100	420 kV	100	2	30,0-40,0	4	120
H11K-102	245 kV	100	1	22,0-33,0	2	115
H11K-104	420 kV	100	2	28,5-44,0	3	125
H11K-120	245 kV	114,3-120	2	30,0-44,0	3	135
H11K-125	420 kV	120	2	22,0-32,0	3	125
H11K-141	245 kV	140-160	2	20,0-32,0	3	145
H11K-150	420 kV	150	2	30,0-40,0	4	145
H11K-252	245 kV	250	2	28,5-42,0	3	210
H11K-254	420 kV	250	2	35,0-37,0	3	200

*Dimensions are in millimeters. Please specify exact diameter in case of order.

Al-Parallel duplex/single connector



Catalog Number	Voltage	ØA *	Covers A	ØB *	Covers B	Bundle-spacing G
H21K-080	245 kV	22,0-32,0	2	80	1	100
H21K-082	420 kV	30,0-42,0	3	80	2	100
H21K-084	245 kV	35,0-44,0	3	80	2	200
H21K-102	420 kV	22,0-33,0	2	100	1	100
H21K-103	420 kV	30,0-43,0	3	100	2	100
H21K-105	420 kV	30,0-42,0	4	100	2	100
H21K-106	420 kV	28,5-44,0	4	100	2	100
H21K-107	420 kV	35,0-44,0	2	100	1	100
H21K-120	550 kV	30,0-42,0	3	114,3-120	2	100
H21K-121	420 kV	30,0-43,2	3	120	2	60
H21K-124	420 kV	30,0-42,0	3	120-125	2	200
H21K-151	420 kV	30,0-44,0	3	150-160	2	100
H21K-160	420 kV	30,0-42,0	3	160	2	100
H21K-161	420 kV	30,0-42,0	3	160	2	100
H21K-164	420 kV	35,0-44,0	3	160	2	400
H21K-200	550 kV	30,0-42,0	3	200	2	100
H21K-245	550 kV	46,0-46,3	3	120	2	150
H21K-250	550 kV	30,0-42,0	3	250	2	100
H21K-252	550 kV	30,0-44,0	3	250	2	200
H21K-253	420 kV	30,6-44,0	3	250	2	60

*Dimensions are in millimeters. Please specify exact diameter in case of order.