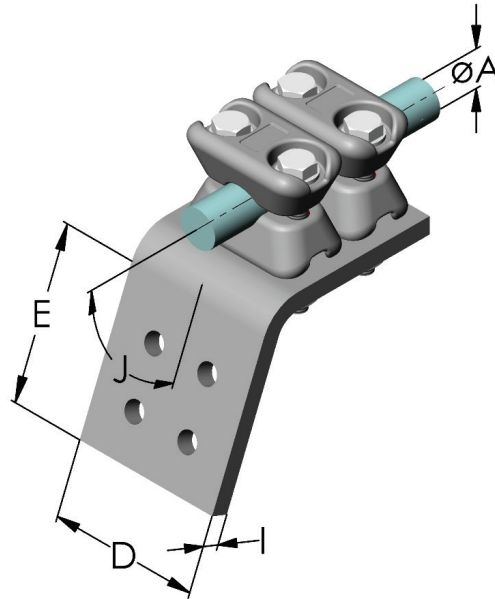


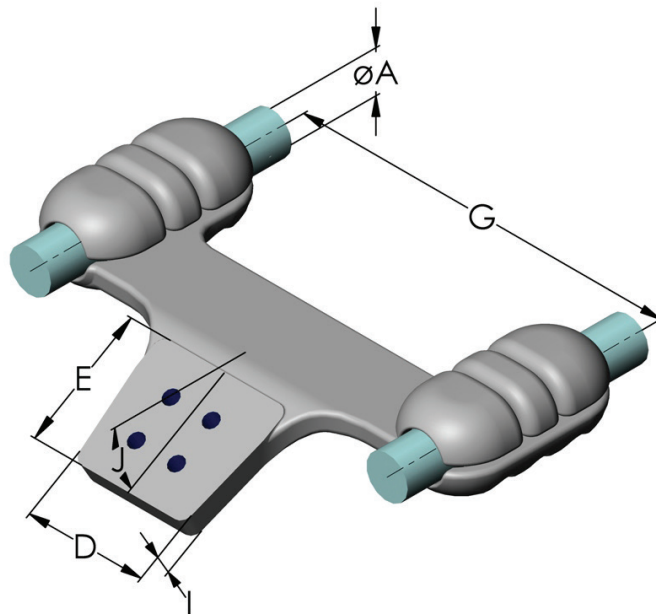
Al-Angle Flat Terminal Connector



Catalog Number	Voltage	ØA *	Covers A	Flat Terminal			Angle J
				D	E	I	
W1FK-032	245 kV	24,5-36,9	2	100	100	20	68°
W1FK-033	145 kV	20,0-32,6	3	100	100	12	30°
W1FK-036	145 kV	24,5-36,9	3	100	100	12	30°
W1FK-037	245 kV	24,5-36,9	3	80	80	20	30°

*Dimensions are in millimeters. Please specify exact diameter in case of order.

Al-Angle duplex flat terminal connector



Catalog Number	Voltage	$\varnothing A$ *	Covers A	$\varnothing B$ *	Flat Terminal			Angle J
					D	E	I	
W2FK-055	550 kV	45,5-46,5	3	400	125	125	25	30°
W2FK-243	420 kV	45,5-46,5	3	200	125	125	30	30°
W2FK-244	420 kV	30,0-44,0	3	200	125	125	30	30°
W2FK-245	420 kV	46.3	3	200	300	100	15	30°
W2FK-246	420 kV	46.3	3	200	80	80	30	30°
W2FK-247	420 kV	45,5-46,5	3	200	125	125	30	60°
W2FK-250	420 kV	30,0-44,0	3	200	125	125	30	60°

*Dimensions are in millimeters. Please specify exact diameter in case of order.