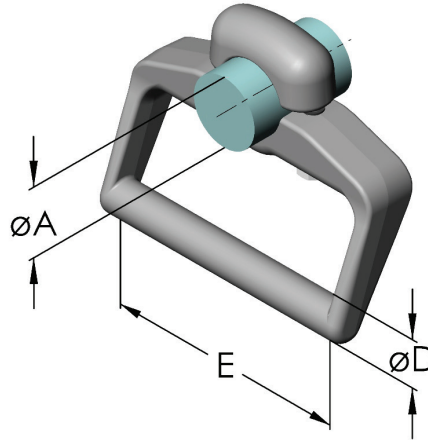


Al-Earthing Fixpoints

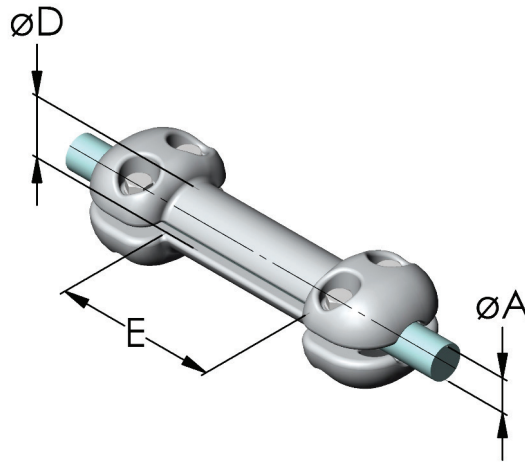
Stirrip transversal to conductor



Catalog Number	Voltage	ØA *	Covers A	"Stirrup-diameter ØD"	"Stirrup-length E"
D1K-022	245 kV	14,0-22,0	1	25	75
D1K-030	245 kV	20,0-32,0	1	22	100
D1K-032	245 kV	20,0-32,0	1	22	100
D1K-033	245 kV	16,0-32,0	1	22	170
D1K-033	245 kV	14,0-21,0	1	20	100
D1K-034	420 kV	20,0-43,0	1	25	170
D1K-039C	245 kV	20,0-42,0	1	25	110
D1K-040	245 kV	20,3-44,0	1	25	174
D1K-042	245 kV	32,0-43,2	1	25	102
D1K-050	245 kV	50	1	22	130
D1K-051	245 kV	40,0-54,8	1	25	170
D1K-080	245 kV	60-80	1	25	170
D1K-081	245 kV	80	1	22	137
D1K-102	420 kV	100	1	22	138
D1K-120	245 kV	120	1	22	177
D1K-121	245 kV	120	1	25	177
D1K-125	420 kV	125	1	30	170
D1K-141	245 kV	140-168,2	1	25	100
D1K-142	550 kV	140-141,3	1	30	100
D1K-161	245 kV	160	1	25	100
D1K-162	550 kV	150-168,3	1	25	160
D1K-201	245 kV	200	1	25	100
D1K-202	420 kV	200	1	25	160
D1K-252	420 kV	250	1	25	102

*Dimensions are in millimeters. Please specify exact diameter in case of order.

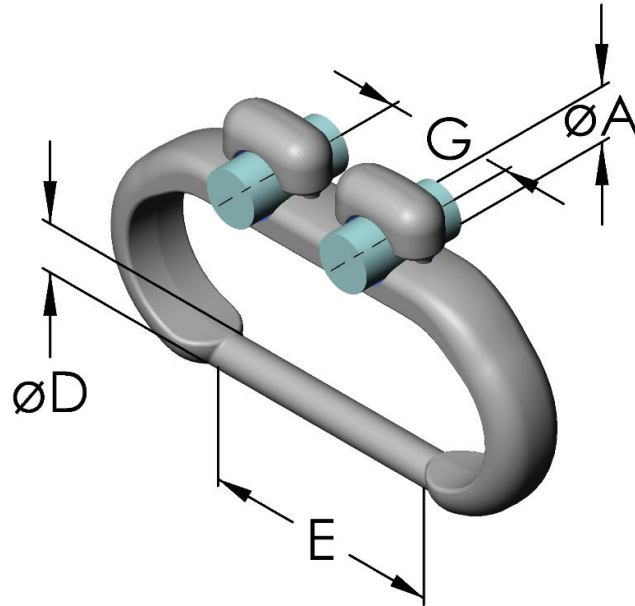
Al-Earthing Fixpoints



Catalog Number	Voltage	ØA *	"Screwpairs A"	Stirrup-diameter ØD	Stirrup-length E
D1K-028	420 kV	26,5-28,5	2	50	130
D1K-029	420 kV	32,0-36,6	2	50	130
D1K-037	420 kV	36.3	2	50	70
D1K-038	420 kV	32,0-32,6	2	50	70

*Dimensions are in millimeters. Please specify exact diameter in case of order.

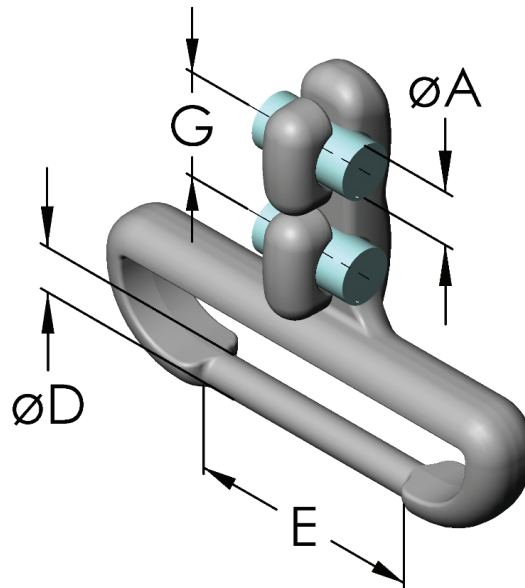
Al-Earthing fixpoints



Catalog Number	Voltage	$\varnothing A$ *	Bundle-spacing G	Stirrup-diameter $\varnothing D$	Stirrup-diameter E	Stirrup-diameter G
D2K-030	245 kV	32,2-32,2	1	25	170	70
D2K-032	245 kV	20,0-32,0	1	25	170	100
D2K-034	420 kV	22,0-44,0	1	25	170	200
D2K-037	420 kV	22,0-44,0	1	30	170	200
D2K-039	245 kV	20,0-44,0	1	25	180	100
D2K-042	245 kV	32,0-43,0	1	25	110	100
D2K-043	420 kV	20,0-43,2	1	25	172	100
D2K-044	420 kV	28,5-44,5	1	25	170	100

*Dimensions are in millimeters. Please specify exact diameter in case of order.

Al-Duplex earthing fixpoints

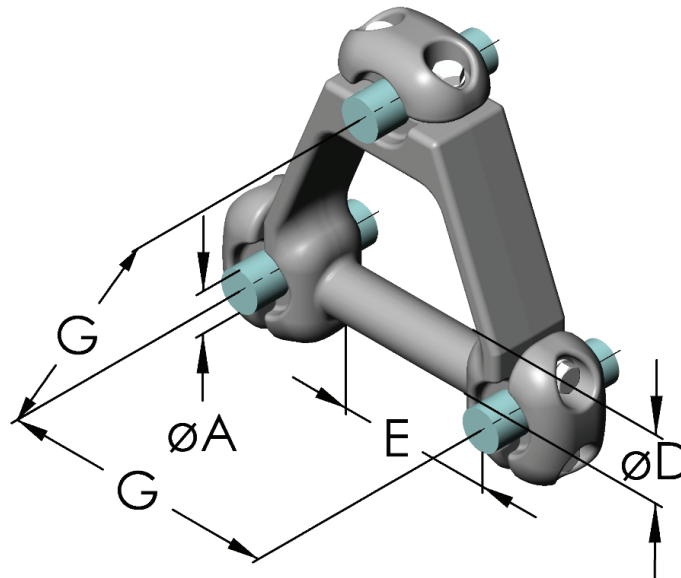


Catalog Number	Voltage	ØA *	Covers A	Stirrup-diameter ØD	Stirrup-diameter E	Stirrup-diameter G
D2K-036	420 kV	30,0-44,0	1	25	170	180

*Dimensions are in millimeters. Please specify exact diameter in case of order.

Al-Triplex earthing fixpoints

Stirrup transversal to triplex

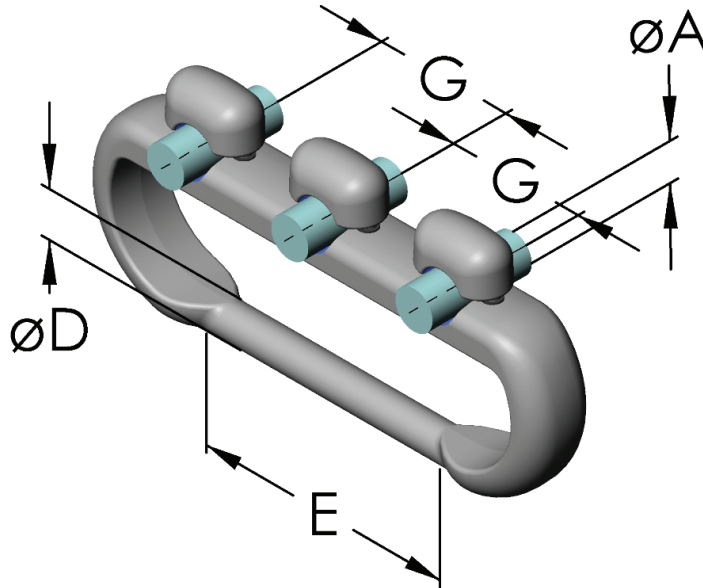


Catalog Number	Voltage	ØA *	Covers A	Stirrup-diameter ØD	Stirrup-length E	Bundle-spacing G
D3K-042	550 kV	30,0-42,0	1	35	110	200
D3K-044	550 kV	30,0-42,0	1	30	243	330

*Dimensions are in millimeters. Please specify exact diameter in case of order.

Al-Triplex earthing fixpoints

Stirrup transversal to triplex

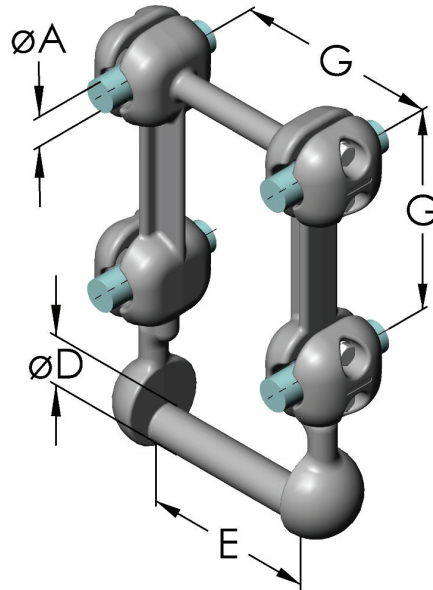


Catalog Number	Voltage	ØA *	Covers A	Stirrup-diameter ØD	Stirrup-length E	Bundle-spacing G
D3K-032	420 kV	22,0-44,0	1	25	170	100
D3K-039	420 kV	22,0-44,0	1	30	170	100
D3K-040	420 kV	20,3-44,0	1	25	300	200

*Dimensions are in millimeters. Please specify exact diameter in case of order.

Al-Quadruple earthing fixpoints

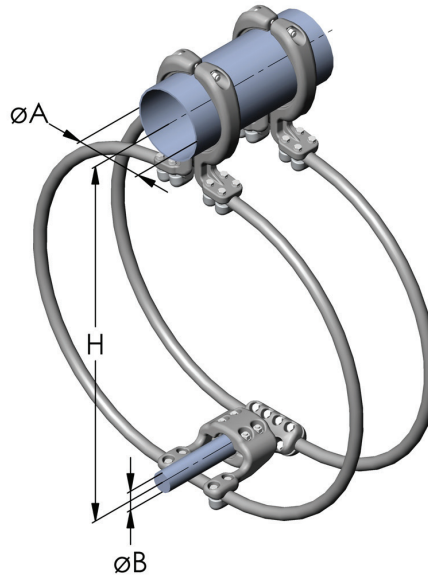
Stirrup transversal to quadruple



Catalog Number	Voltage	ØA *	Covers A	Stirrup-diameter ØD	Stirrup-length E	Bundle-spacing G
D4K-032	245 kV	20,03-33,8	1	25	100	100
D4K-033	245 kV	26,5-32,6	1	35	170	200
D4K-034	550 kV	31,7-33,8	1	30	170	200
D4K-035	550 kV	26,5-32,6	1	30	100	200

*Dimensions are in millimeters. Please specify exact diameter in case of order.

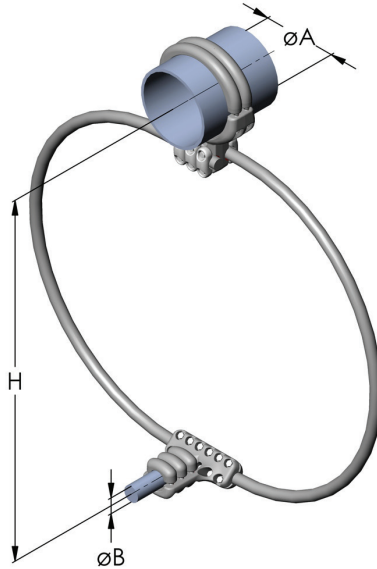
Al-Double conductor ring for pantograph countercontact



Catalog Number	Voltage	ØA *	ØB *	Height H
NJK-200L	550 kV	190	54-63	1045
NJK-201L	550 kV	190-200	54-63	930
NJK-220L	550 kV	220	54-63	1150
NJK-251L	550 kV	250-255	54-63	910

*Dimensions are in millimeters. Please specify exact diameter in case of order.

Al-Conductor ring for pantograph countercontact



Catalog Number	Voltage	ØA *	ØB *	Height H
NJK-100M	420 kV	90-100	52-63	625
NJK-101M	420 kV	90-100	52-63	725
NJK-120L	145 kV	120-125	52-65	600
NJK-121M	420 kV	120-125	52-63	715
NJK-122M	420 kV	114-125	52-63	945
NJK-123M	420 kV	114-125	54-63	775
NJK-160L	420 kV	160	-	750
NJK-161L	420 kV	168.2	-	750
NJK-201L	420 kV	200	-	750
NJK-220L	420 kV	220	54-63	760
NJK-250L	420 kV	250-255	-	910
NJK-255L	420 kV	250	54-63	760
NJK-262L	420 kV	250	54-63	950

*Dimensions are in millimeters. Please specify exact diameter in case of order.