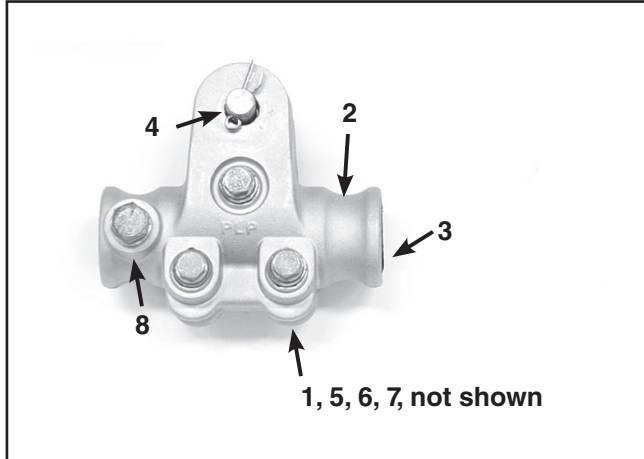




FIBERLIGN® EZ Cushion Suspension for OPGW

Be sure to read and completely understand this procedure before applying product. Be sure to select the proper PREFORMED™ product before application.



NOMENCLATURE

1. Nuts (Captive in Housing Half)
2. Housing Clamp Half (2 each)
3. Elastomer Inserts (2 per housing half)
4. Pin and Cotter Key
5. Split Lock Washers (3)
6. Bolts (3)
7. Flat Washers (3)
8. Grounding Boss
(Bolt and washer included with suspension)

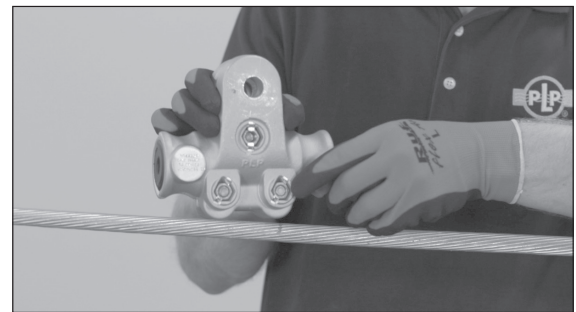
Step #1 Plumb suspension and mark OPGW at the center of the clamp. Use felt marking pen or lumber crayon; do not scratch OPGW. Remove the pin and cotter key, or bolt, nut and cotter key.



Step #2 Completely disengage the top bolt of the suspension assembly from its nut. Note that this bolt is held captive with a small rubber O-ring. The bottom bolts remain engaged.



Step #3 Loosen the bottom two bolts making sure not to back them completely out of their respective nut. This will permit the clamp halves to pivot open on these bottom two bolts. If the bolts are not completely loosened; installation of the clamp on the largest OPGW in the clamp range may be difficult.

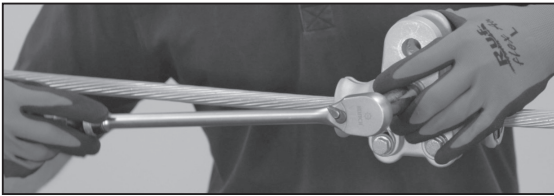


Step #4 Place the suspension on the OPGW, lining up the suspension clevis pin holes with the mark made on the OPGW and the structure connection point. Push in the top bolt to engage it in the captured nut in the opposite housing clamp half. Tighten by hand until snug.



Step #5 Begin tightening all three bolts with a torque wrench keeping the housing clamp halves parallel (i.e., equal gaps between housing clamp halves on top and bottom). Incrementally tighten each bolt until 25 ft-lbs of torque is achieved.

Tightening of the bolts should be completed in a circular pattern. When tightening with the torque wrench, start with the top bolt and only partially tighten the top bolt. Then move to the bottom bolts and partially tighten to assure an equal gap between housing clamp halves. This should be repeated several times until the torque reaches the proper level.

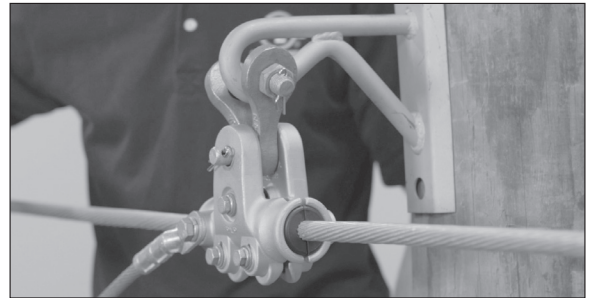


Step #6 Re-check the bottom two bolts after torquing to ensure that they are properly tightened.

Step #7 To install grounding wire assembly (sold separately), attach wire to ground boss with provided 1/2"-13 UNC x 3/4" bolt and lock washer. Tighten bolt until lock washer is flat.



Step #8 FIBERLIGN® EZ Cushion Suspension completely assembled and connected.



SAFETY CONSIDERATIONS

This application procedure is not intended to supersede any company construction or safety standards. This procedure is offered only to illustrate safe application for the individual.

FAILURE TO FOLLOW THESE PROCEDURES MAY RESULT IN PERSONAL INJURY OR DEATH.

Do not modify this product under any circumstances.

This product is intended for use by trained technicians only. **This product should not be used by anyone who is not familiar with, and not trained to use it.**

When working in the area of energized lines, extra care should be taken to prevent accidental electrical contact. Be sure to wear proper safety equipment per your company protocol.

For proper performance and personal safety, be sure to select the proper size PREFORMED™ product before application.

PREFORMED products are precision devices. To ensure proper performance, they should be stored in cartons under cover and handled carefully.



PREFORMED LINE PRODUCTS

P.O. Box 91129, Cleveland, Ohio 44101 • 440.461.5200 • preformed.com • email: inquiries@preformed.com

SP3521