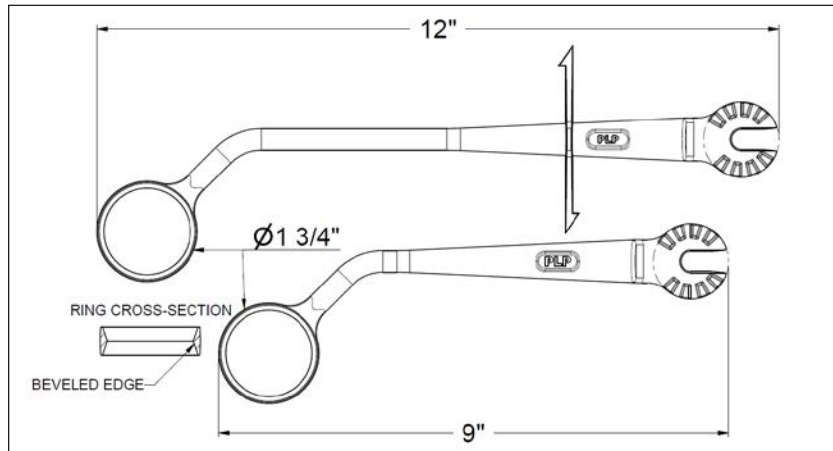




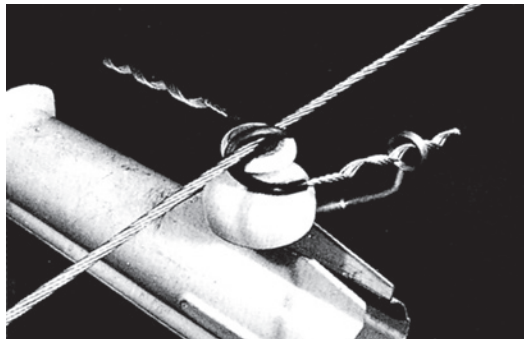
# Applicator Ring Tools

PLP's Applicator Ring Tools are designed to provide a functional, safe, and quick method for installing factory-formed wire products on energized conductors. The specially-beveled ring permits easy encirclement of the helical leg and facilitates positioning and removal of the product. The crossarm of the SH-0003, with picks

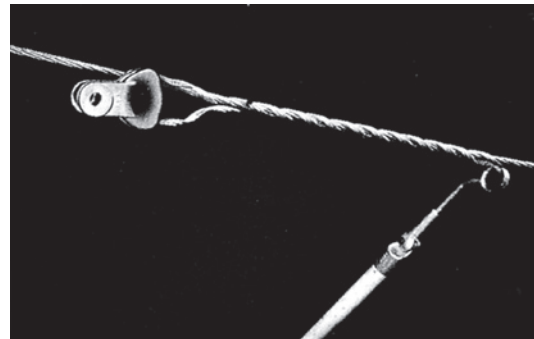
on both ends, is designed to ensure complete installation and assist in initiating removal of the formed wire products. The angled neck combined with the universal base, allows the tool to be safely and easily maneuvered around conductors.



Catalog Number	Description
SH-0001	Applicator Ring – Universal Base
SH-0003	Applicator Ring with Crossarm – Universal Base



INSULATOR TIES



DISTRIBUTION-GRIP DEAD-END

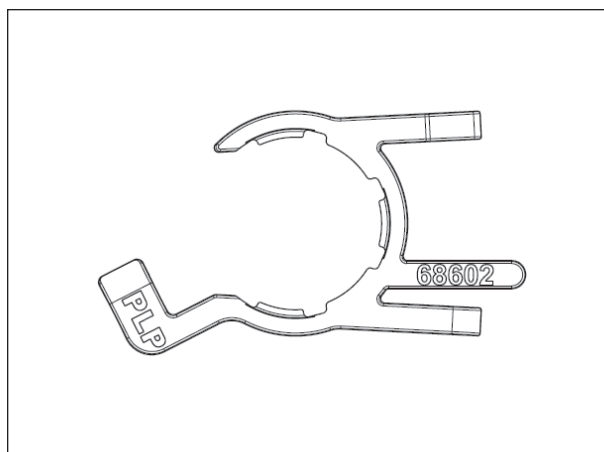


ARMOR RODS



CROSSARM FOR PRODUCT COMPLETION OR REMOVAL

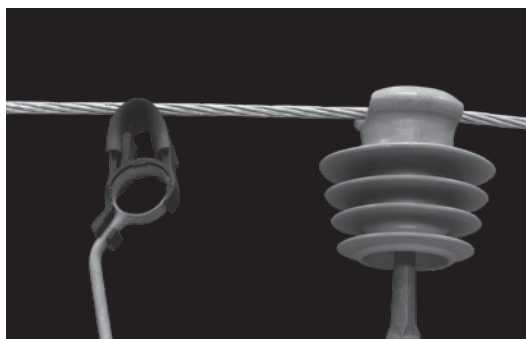
## Tie Tube Applicator for Applicator Ring Tools



The Tie Tube Applicator is designed to provide a safe and functional way to apply the tie tubes provided with PLP's factory formed ties while working with an energized distribu-

tion system. It attaches onto the PLP Applicator Ring Tool in seconds and following usage it can be just as easily removed and put aside until it is needed again.

Catalog Number	Description
TFA-1	Tie Tube Applicator



ORIENT THE TOOL FOR INITIAL APPLICATION OF THE TUBE



LIFT THE CONDUCTOR IF REQUIRED TO POSITION THE TUBE



PUSH THE TUBE TO THE INSULATOR



PROPERLY INSTALLED AND POSITIONED TUBE