



PREFORMED LINE PRODUCTS
The connection you can count on.

Severe Weather Tie Kit



COMMUNICATIONS



ENERGY



SPECIAL INDUSTRIES



SOLAR





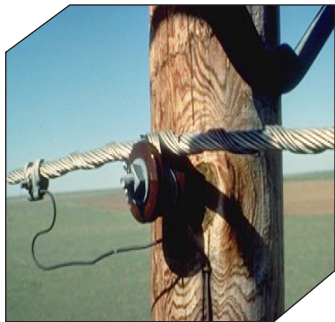
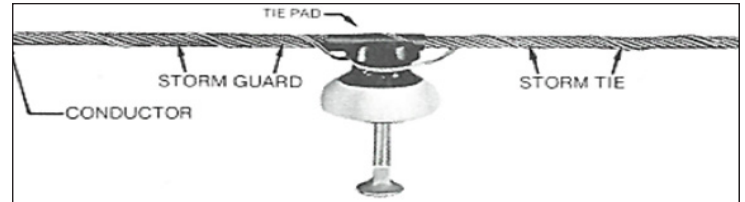
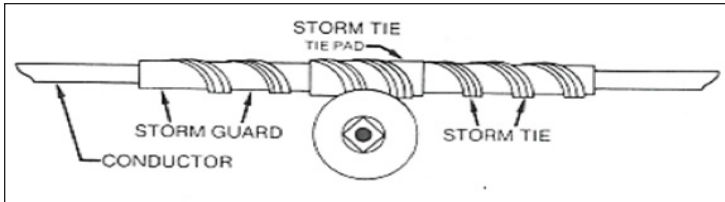
PLP® Distribution Products Severe Weather Tie Kits

Description

The PLP Severe Weather Tie Kit is designed to protect conductors and hardware from damage or breakage under the most severe weather conditions.

Features

- Special kitted product
- Combines custom aluminum rods (Line Guards) with a factory formed tie
- Improved protection for ice loading and vibration-prone areas
- Available combinations are Distribution Ties, Spool Ties, and Double Ties¹



PLP SEVERE WEATHER TIES for use on BARE ALUMINUM-BASED CONDUCTORS							
Catalog Number	Conductor		Line Guard		Tie		
	Range (inches)	Nominal Size	Applied Length (inches)	Color Code	Applied Length (inches)	Conductor Color Code	Insulator Color Code
Top Groove C-Neck Insulator (2-1/4" Neck Diameter) NEMA Class 55-2, 55-3							
SWUTC 8234	.244 - .259	#4	31	Orange	25	Orange	Black
SWUTC 8235	.309 - .326	#2	33	Red	28	Red	
SWUTC 8236	.390 - .413	1/0	36	Purple	30	Purple	
SWUTC 8237	.437 - .463	2/0	36	Brown	31	Brown	
SWUTC 8238	.491 - .521	3/0	36	Brown	31	Brown	
SWUTC 8239	.522 - .585	4/0	37	Red	32	Red	
SWUTC 9173*	.631 - .655	266.8 (26/7)	39	Blue	34	Blue	
SWUTC 9175**	.704 - .740	336.4 (26/7)	42	Green	37	Green	
SWUTC 9179**	.841 - .896	477 (26/7)	45	Yellow	40	Yellow	
Top Groove F-Neck Insulator (2 - 7/8" Neck Diameter) NEMA Class 55 -4, 55 - 5, 57-1 57-2, 57-3							
SWUTF 8240	.244 - .259	#4	31	Orange	27	Orange	Yellow
SWUTF 8241	.309 - .326	#2	33	Red	29	Red	
SWUTF 8242	.390 - .413	1/0	36	Purple	32	Purple	
SWUTF 8243	.437 - .463	2/0	36	Brown	32	Brown	
SWUTF 8244	.491 - .521	3/0	36	Brown	32	Brown	
SWUTF 8245	.522 - .585	4/0	37	Red	33	Red	
SWUTF 9174*	.631 - .655	266.8 (26/7)	39	Blue	35	Blue	
SWUTF 9176**	.704 - .740	336.4 (26/7)	42	Green	38	Green	
SWUTF 9180**	.841 - .896	477 (26/7)	45	Yellow	41	Yellow	
Spool Insulator (1 - 3/4" Neck Diameter) NEMA Class 53 - 2							
SWSPL 8412	.244 - .259	#4	31	Orange	22	Green	None
SWSPL 8413	.309 - .326	#2	33	Red	23	Red	
SWSPL 8414	.390 - .413	1/0	36	Purple	23	Purple	
SWSPL 8415	.437 - .463	2/0	36	Brown	22	Brown	
SWSPL 8416	.491 - .521	3/0	36	Brown	22	Brown	
SWSPL 9183	.522 - .585	4/0	37	Red	32	Red	



Global Headquarters
660 Beta Drive
Cleveland, Ohio 44143

Mailing Address:
P.O. Box 91129
Cleveland, Ohio 44101

Telephone: 440.461.5200
Fax: 440.442.8816
Website: preformed.com
Email: inquiries@preformed.com

© 2019 Preformed Line Products
Printed in U.S.A.
EN-SS-1261
11.19.IH

*Requires 5/8" minimum insulator top groove radius.
**Requires 3/4" minimum insulator top groove radius.

(All others require 9/16" minimum insulator top groove radius)

¹Contact PLP for additional combinations