

APPLICATION PROCEDURE & SAFETY CONSIDERATIONS **PREFORMED** LINE PRODUCTS

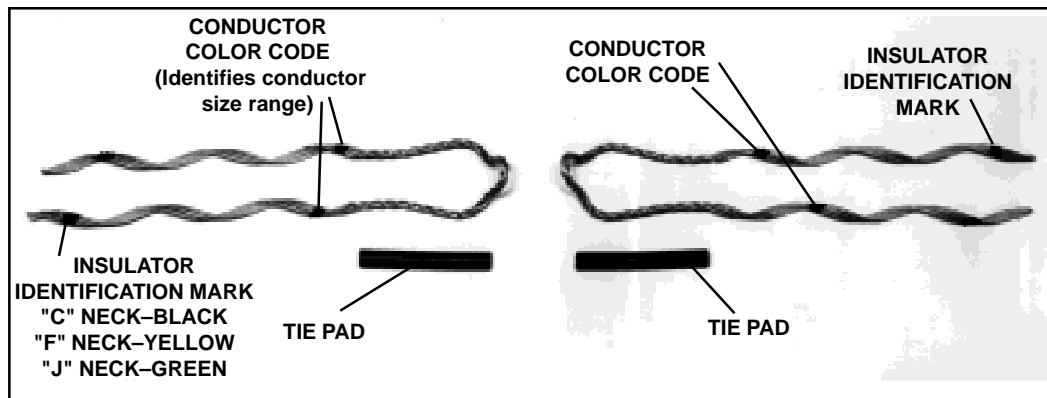


JULY 2016

DOUBLE-SUPPORT TIE

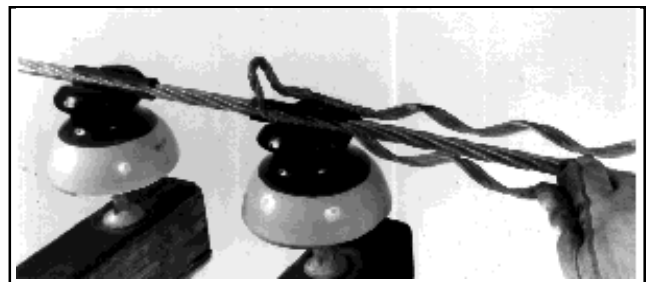
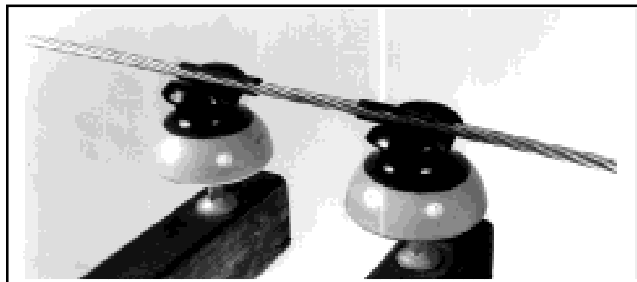
FOR TOP GROOVE, DOUBLE INSULATOR INSTALLATIONS

Be sure to read and completely understand this procedure before applying product. Be sure to select the proper PREFORMED™ product before application.



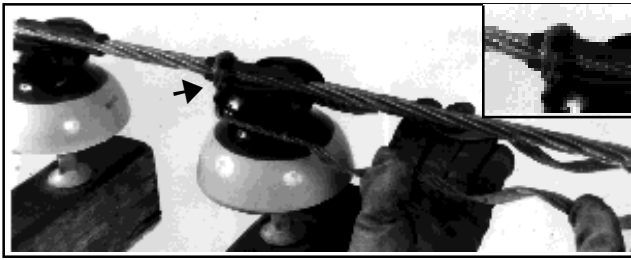
Double-Support Tie

HAND APPLICATION

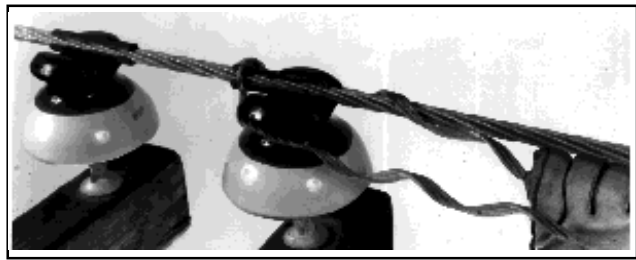


1.00 Apply tie pads to conductor, slit to the side, so neither insulator nor tie loop comes into direct contact with the conductor. Make sure the tie pads extend inward from the insulator groove toward each other enough so the tie pad will be between the tie loop and the conductor. The groove of the insulator must be completely protected from end to end by the tie pad, as shown.

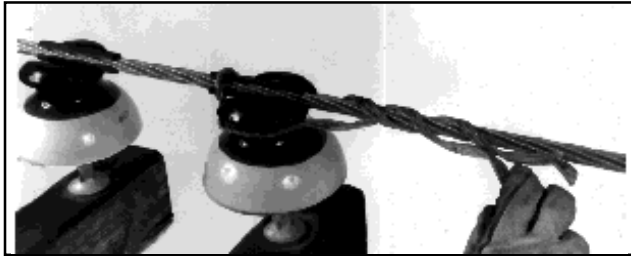
2.00 Place the Double-Support Tie over the portion of the tie pad which extends inward away from the insulator.



3.00 Seat the Double-Support Tie around the neck of the insulator. Make certain the tie pad is captured under the tie as shown (see inset photo). MAKE SURE THE TIE LOOP IS TIGHT ON INSULATOR NECK AND UNDER INSULATOR HEAD.



4.00 Lift one of the legs up and over the conductor and wrap in place. Position the other leg under the conductor and start to wrap in place.



5.00 Continue to wrap the legs simultaneously around the conductor.



6.00 Make sure to snap the ends of the legs into place with slight thumb pressure.

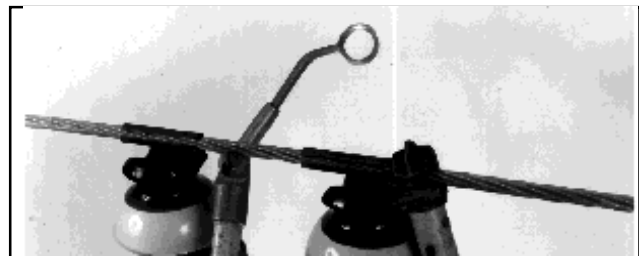


7.00 Follow these same instructions for the other insulator. MAKE SURE TIE LOOP IS TIGHT ON INSULATOR NECK AND UNDER INSULATOR HEAD. Completed application of the PREFORMED™ Double Support Tie.

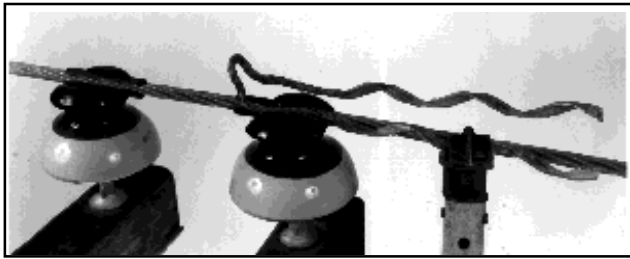
HOT-STICK APPLICATION



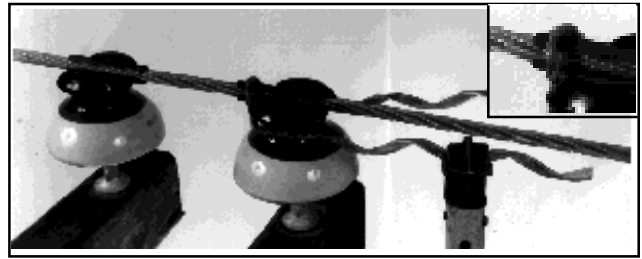
8.00 One method of securing the Double-Support tie pads onto the conductor prior to applying Double-Support Tie: Apply the tie pad to conductor, slit facing up, so the conductor does not come into direct contact with the insulator.



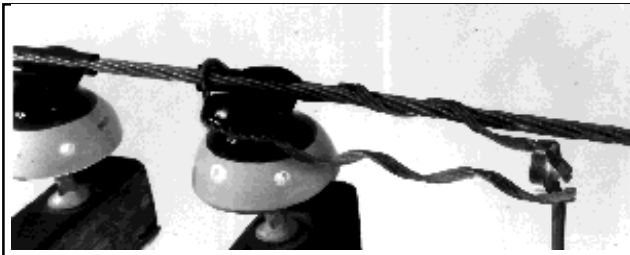
9.00 After applying the pad with a hot stick, slide the pad over until it rests in the insulator groove as described in Step #1. You may need to lift the conductor with the aid of another hot stick. Make sure the slit in the tie pad faces up and away from the insulator groove.



10.00 Grasp one leg of the Double-Support Tie with the hot stick and position it over the conductor as shown.



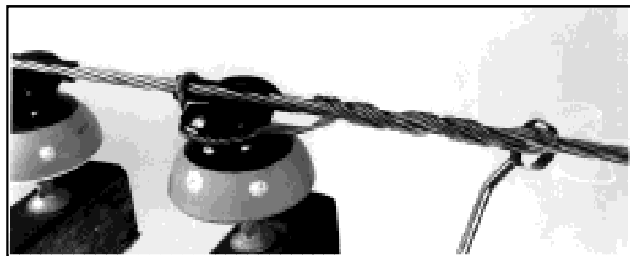
11.00 Seat the Double-Support Tie around the neck of the insulator. Make certain the tie pad is captured under the tie as shown (see inset photo). MAKE SURE TIE LOOP IS TIGHT ON INSULATOR NECK AND UNDER INSULATOR HEAD.



12.00 Grasp one leg of the Double-Support Tie with the Applicator Ring Tool and lift it up and over the conductor and wrap in place.



13.00 Grasp the other leg as shown and position the other leg around the conductor and start to wrap in place.



14.00 Continue wrapping the legs around the conductor. Make sure to snap the end of the leg into place with the Applicator Ring Tool as shown.



15.00 Follow these same instructions for the other insulator. MAKE SURE TIE LOOP IS TIGHT ON INSULATOR NECK AND UNDER INSULATOR HEAD. Shown are both the right-hand and left-hand side insulator with the Double-Support Tie completely installed. Completed application of the PRE-FORMED™ Double Support Tie.

SAFETY CONSIDERATIONS

1. This Application Procedure is not intended to supersede any company construction or safety standards. This procedure is offered only to illustrate safe application for the individual. **CAUTION: FAILURE TO FOLLOW THESE PROCEDURES AND RESTRICTIONS MAY RESULT IN PERSONAL INJURY OR DEATH.**
2. This product is intended for a single (one-time) use and for the specified application. **CAUTION: DO NOT REUSE OR MODIFY THIS PRODUCT UNDER ANY CIRCUMSTANCES.**
3. This product is intended for use by trained craftspeople only. This product **SHOULD NOT BE USED** by anyone who is not familiar with and trained in the use of it.
4. When working in the area of energized lines with this product, **EXTRA CARE** should be taken to prevent accidental electrical contact.
5. For **PROPER PERFORMANCE AND PERSONAL SAFETY** be sure to select the proper size **PREFORMED™ Double Support Tie** before application.
6. **PREFORMED Double Support Ties** are precision devices. To insure proper performance, they should be stored in cartons under cover and handled carefully.



PREFORMED LINE PRODUCTS

P.O. Box 91129, Cleveland, Ohio 44101 • 440.461.5200 • www.preformed.com • e-mail: inquiries@preformed.com

SP3386