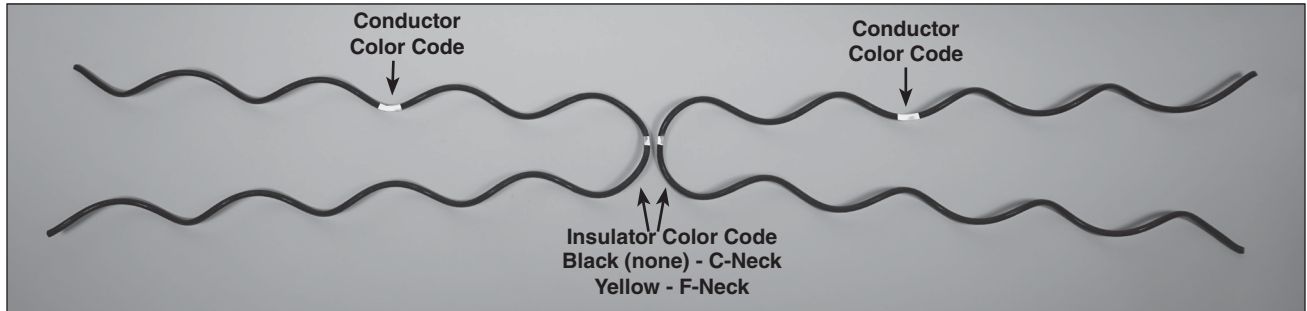


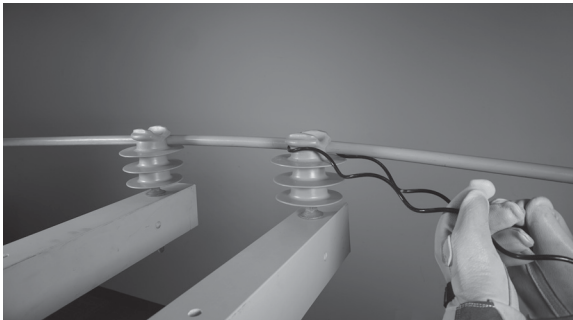


Coated Double Side Tie for Side Groove, Double Insulator Installations on covered conductor

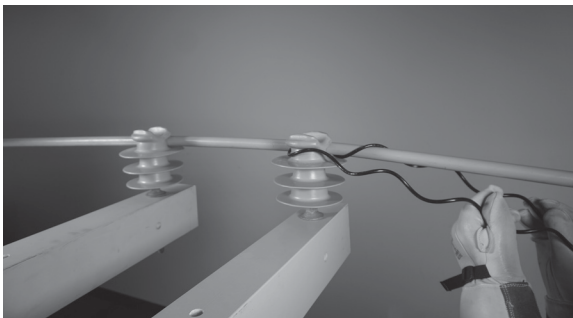
Be sure to read and completely understand this procedure before applying product.
Be sure to select the proper size PREFORMED™ product before application.



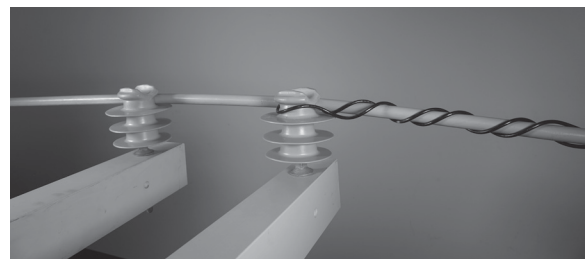
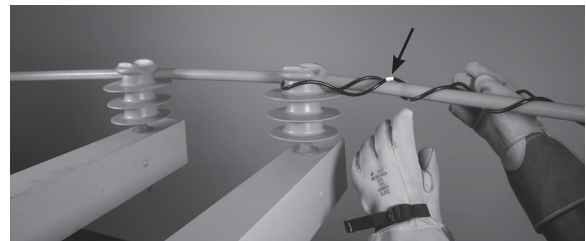
Step #1 Slide the Tie tight around the neck of the first insulator with the legs facing away from the second insulator, making sure the loop of the tie is tight against the insulator neck.



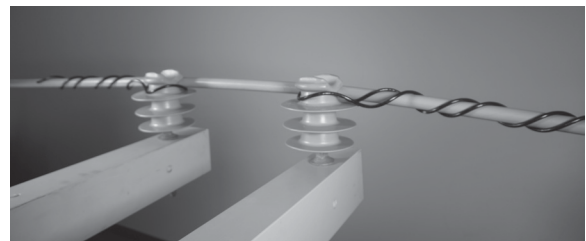
Step #2 Begin wrapping the first leg onto the conductor. This is the leg that is on the same side of the insulator as the conductor. Note the tie leg lay direction and how the first pitch of the tie naturally comes off the insulator and wraps on the conductor. On one insulator the leg will come from under the conductor and on the opposite insulator it will be over the conductor.



Step #3 Install the second leg starting at the crossover marks. Wrapping the second leg to completion snapping the leg end into place.



Step #4 Follow the same instructions for the second tie component paying attention to the tie's transition to the conductor at the 2nd insulator.



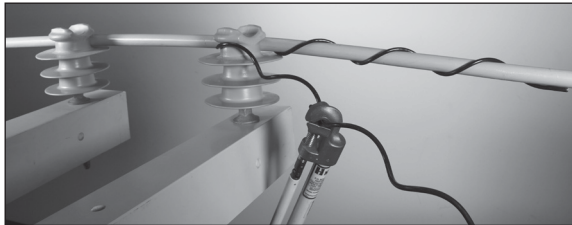
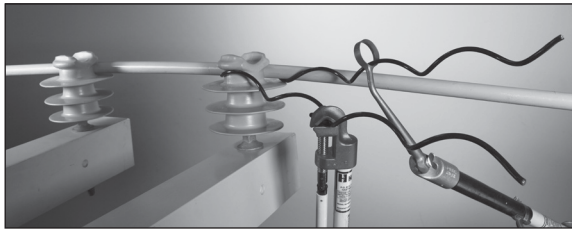
Completed Application

Hot Stick Application

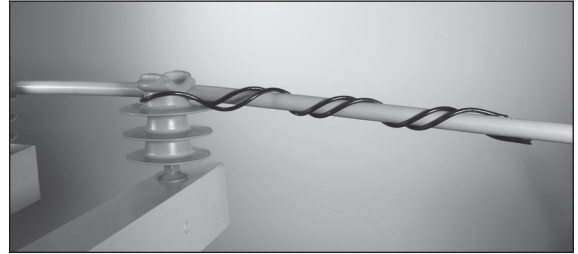
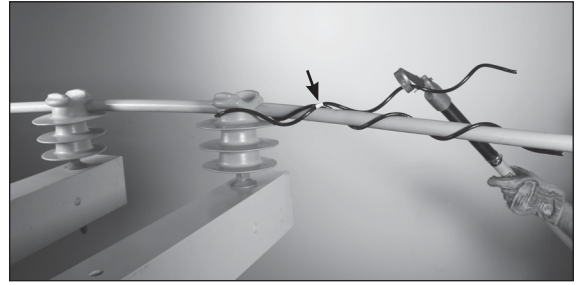
Step #1 Grasp the leg of the first half of the Coated Double Side Tie on the opposite side of the insulator as the conductor with the jumper holding stick and position around the head of the first insulator with legs extending away from the second insulator.
NOTE: Make sure that the Tie Loop is tight on the Insulator Neck.



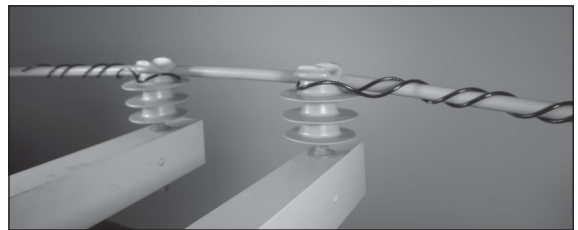
Step #2 Begin wrapping the first leg onto the conductor. This is the leg that is on the same side of the insulator as the conductor. Note the tie leg lay direction and how the first pitch of the tie naturally comes off the insulator and wraps on the conductor. On one insulator the leg will come from under the conductor and on the opposite insulator it will be over the conductor.



Step #3 Install the second leg starting at the crossover marks. Wrapping the second leg to completion snapping the leg end into place.



Step #4 Follow the same instructions for the second tie component paying attention to the tie's transition to the conductor at the 2nd insulator. Note that the two tie halves are identical and make sure that the tie loop is tight on the insulator neck.



Completed Application

SAFETY CONSIDERATIONS

This application procedure is not intended to supersede any company construction or safety standards. This procedure is offered only to illustrate safe application for the individual.

FAILURE TO FOLLOW THESE PROCEDURES MAY RESULT IN PERSONAL INJURY OR DEATH.

This product is intended for a single (one time) use and for the specified application.

Do not reuse or modify this product under any circumstances.

This product is intended for use by trained technicians only. **This product should not be used by anyone who is not familiar with, and not trained to use it.**

When working in the area of energized lines, extra care should be taken to prevent accidental electrical contact.

Be sure to wear proper safety equipment per your company protocol.

For proper performance and personal safety, be sure to select the proper size PREFORMED™ product before application.

PREFORMED products are precision devices. To ensure proper performance, they should be stored in cartons under cover and handled carefully.



PREFORMED LINE PRODUCTS

P.O. Box 91129, Cleveland, Ohio 44101 • 440.461.5200 • preformed.com • email: inquiries@preformed.com

SP3590