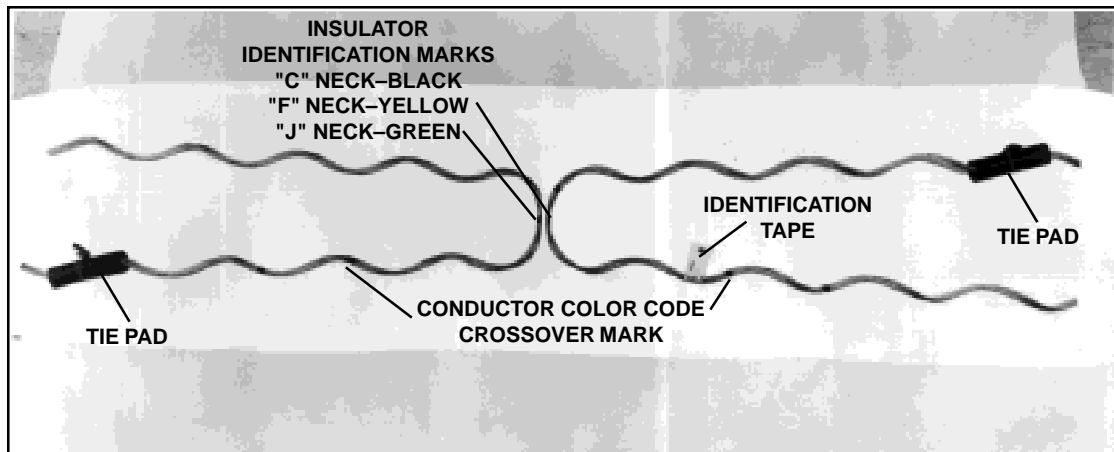




DOUBLE SIDE TIE

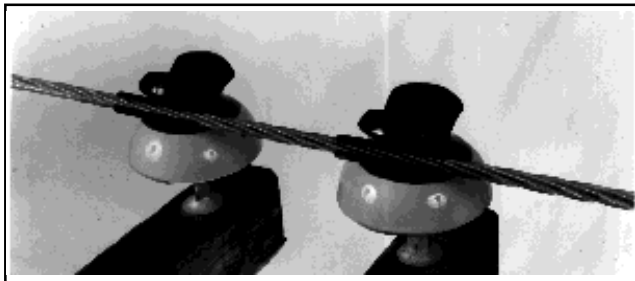
FOR SIDE GROOVE, DOUBLE INSULATOR INSTALLATIONS

Be sure to read and completely understand this procedure before applying product. Be sure to select the proper PREFORMED™ product before application.



Double Side Tie as received in the field

HAND APPLICATION



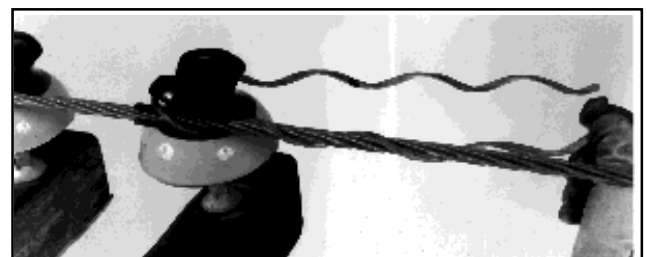
1.00 Apply tie pads to conductor, slit facing out, so the conductor does not come into direct contact with the insulator.



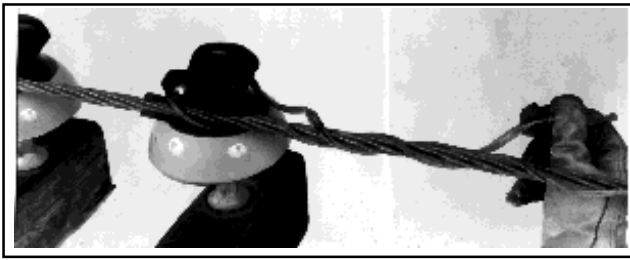
2.00 Pull the tie snugly against the insulator neck so that it will be properly seated. This must be done to ensure proper installation.



3.00 Wrap the first leg around the tie pad.



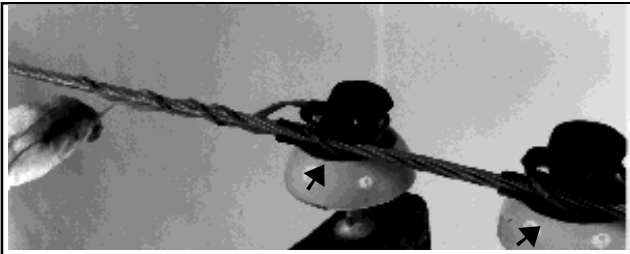
4.00 Continue wrapping the leg of the tie around the conductor and then snap the leg into place with slight thumb pressure.



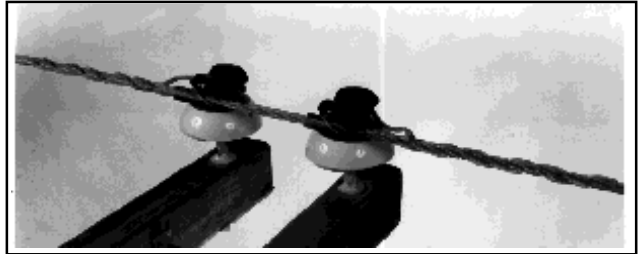
5.00 Pull the second leg around the insulator and wrap around the conductor near the cross-over mark.



6.00 Make sure to snap the end of the leg into place with slight thumb pressure. MAKE SURE TIE LOOP IS TIGHT ON INSULATOR NECK AND UNDER INSULATOR HEAD.

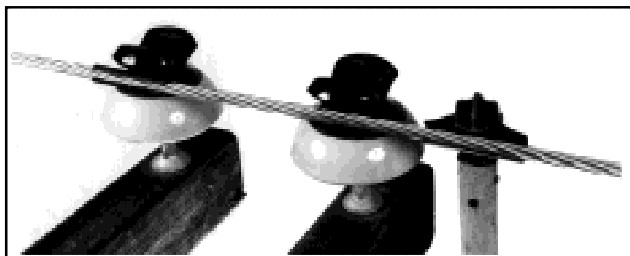


7.00 Follow these same instructions for the other insulator. MAKE SURE TIE LOOP IS TIGHT ON INSULATOR NECK AND UNDER INSULATOR HEAD. Notice the application of the ties as they leave the insulator necks and wrap around the pads (see arrows). One will always start under the pad, and the other will always start over the pad.

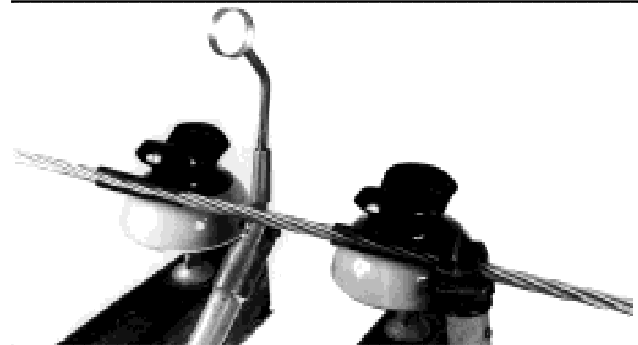


8.00 Completed application of PERFORMED™ Double Side Tie.

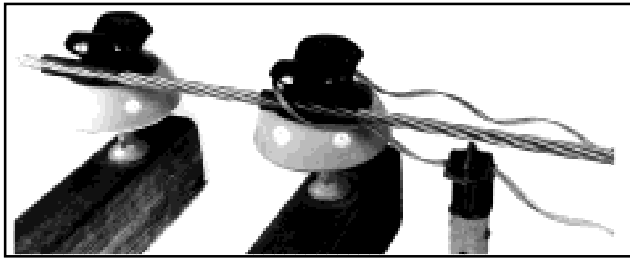
HOT-STICK APPLICATION



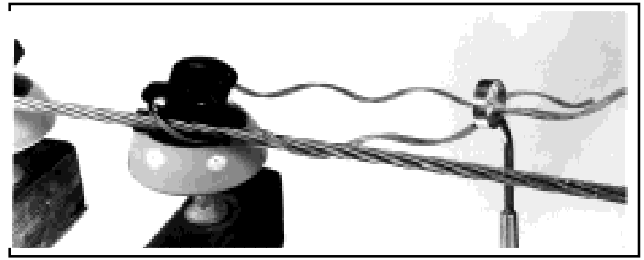
9.00 One method of securing the Double Side tie pads onto the conductor prior to applying Double Side Tie: Apply the tie pad to conductor, slit facing out, so the conductor does not come into direct contact with the insulator.



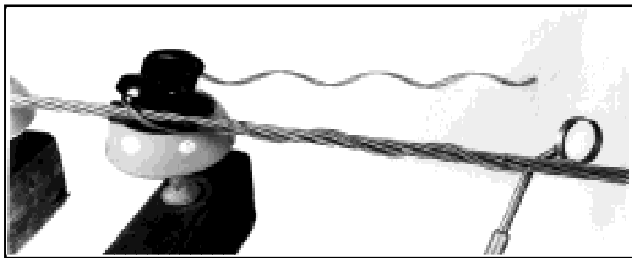
10.00 After applying the pad with a hot stick, slide the pad over until it rests in the insulator groove as described in Step #1. You may need to lift the conductor with the aid of another hot stick. Make sure the slit in the tie pad faces away from the insulator groove.



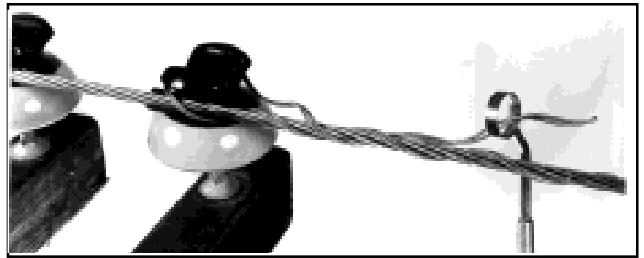
11.00 Grasp one leg of the Double Side Tie with the hot stick and pull the tie down around the neck of the insulator. Be sure the tie is snug against the insulator neck so that it will be properly seated. This must be done to ensure proper installation.



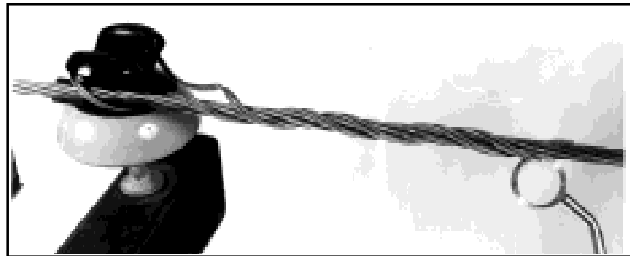
12.00 Start to wrap the leg of the tie around and over the top of the tie pad as shown.



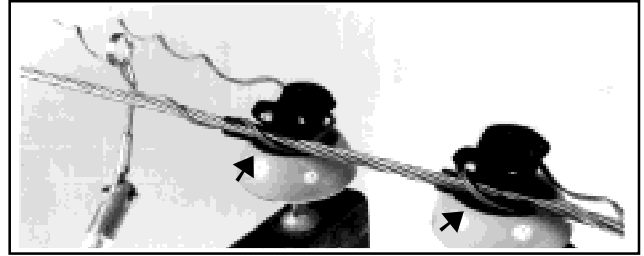
13.00 Using the Applicator Ring Tool, lift the tie up and over the conductor and wrap place. Make sure to snap the leg into place.



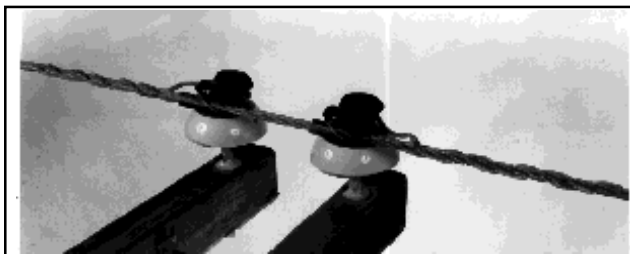
14.00 Position the Applicator Ring Tool on the remaining leg. Pull this leg around the insulator and wrap the leg around the conductor near the crossover mark.



15.00 Continue wrapping the legs around the conductor. MAKE SURE TIE LOOP IS TIGHT ON INSULATOR NECK AND UNDER INSULATOR HEAD. Make sure to snap the end of the leg into place with the Applicator Ring Tool as shown.



16.00 Follow these same instructions for the other insulator. MAKE SURE TIE LOOP IS TIGHT ON INSULATOR NECK AND UNDER INSULATOR HEAD. Notice the application of the ties as they leave the insulator necks and wrap around the pads (see arrows). One will always start under the pad, and the other will always start over the pad.



17.00 Completed application of PREFORMED™ Double Side Tie.

SAFETY CONSIDERATIONS

1. This application procedure is not intended to supersede any company construction or safety standards. This procedure is offered only to illustrate safe application for the individual. **CAUTION: FAILURE TO FOLLOW THESE PROCEDURES AND RESTRICTIONS MAY RESULT IN PERSONAL INJURY OR DEATH.**
2. This product is intended for a single (one-time) use and for the specified application. **CAUTION: DO NOT REUSE OR MODIFY THIS PRODUCT UNDER ANY CIRCUMSTANCES.**
3. This product is intended for use by trained craftspeople only. This product **SHOULD NOT BE USED** by anyone who is not familiar with, and trained in the use of it.
4. When working in the area of energized lines with this product, **EXTRA CARE** should be taken to prevent accidental electrical contact.
5. For **PROPER PERFORMANCE AND PERSONAL SAFETY** be sure to select the proper size **PRE-FORMED™ Double Side Tie** before application.
6. **PREFORMED Double Side Ties** are precision devices. To insure proper performance, they should be stored in cartons under cover and handled carefully.

PREFORMED LINE PRODUCTS 

P.O. Box 91129, Cleveland, Ohio 44101 • 440.461.5200 • www.preformed.com • e-mail: inquiries@preformed.com

SP2202-1