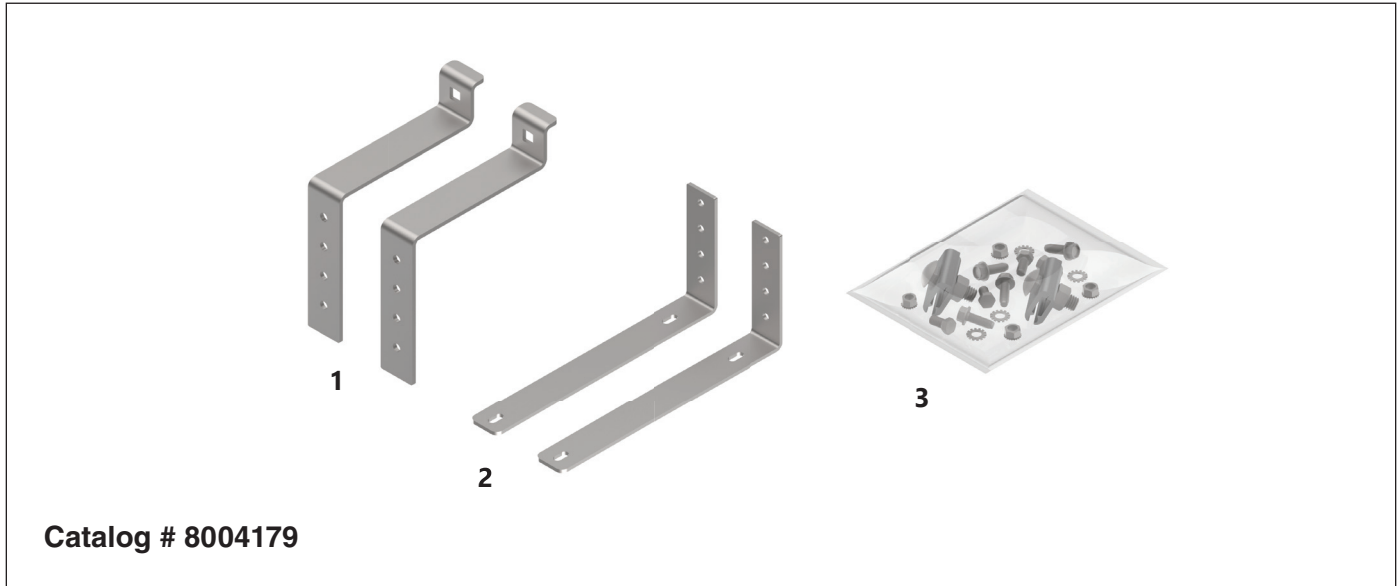




# COYOTE® In-Line RUNT and Single Chamber Terminal – Horizontal Aerial Strand Mount Bracket

Be sure to read and completely understand this procedure before applying product. Be sure to select the proper PREFORMED™ product before application.



**NOMENCLATURE**

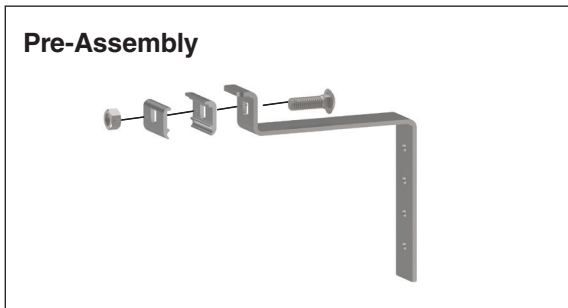
1. Top Bracket (2)
2. Bottom Bracket (2)
3. Small Parts Bag (1)

**TOOLS REQUIRED**

- 3/8" and 7/16" Can wrench or socket
- 9/16" Open-ended wrench or socket

**Step #1** Assemble each strand clamp to each top bracket as shown below.

**Pre-Assembly**



**Complete**

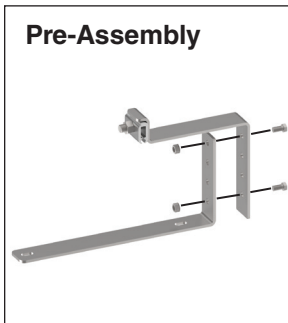


**Step #2** Align each top bracket with each bottom bracket as shown below. Secure each top bracket and each bottom bracket together with the bolts and nuts provided.

The brackets may be aligned with the different hole locations, to give a total height of 5", 6", or 7" from the center of the strand to the bottom of the closure, depending on the alignment.

Make sure two nuts and two bolts are fastened at all times. Installing only one nut and one bolt may cause the brackets to rotate.

**Pre-Assembly**



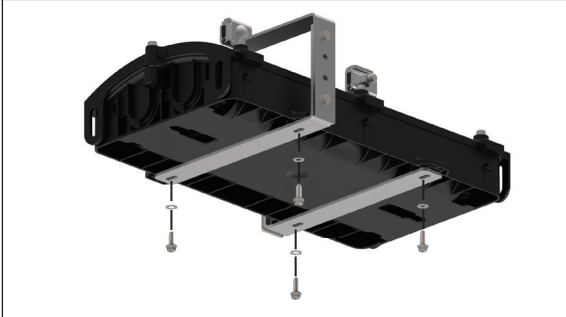
**Complete**



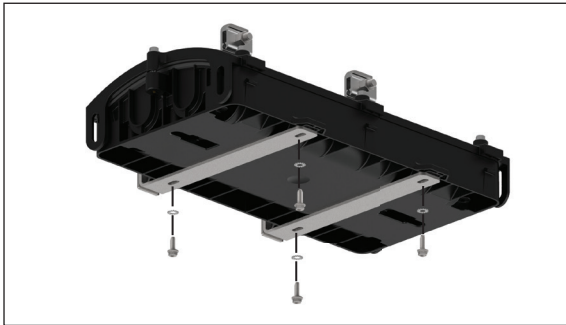
**Step #3** Attach the bracket assemblies to the closure with the self-tapping screws and lock washers provided.

Brackets can be mounted on the same or opposite sides, but opposite-side orientation will provide better stability.

#### Primary Bracket Pattern

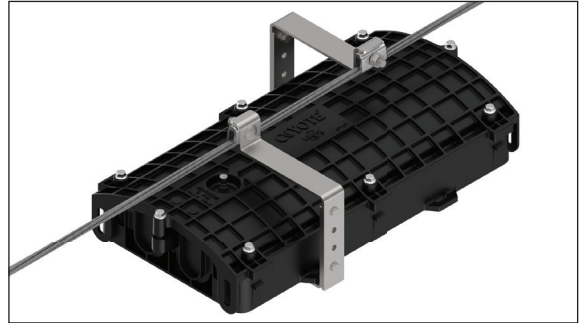


#### Same-Side Bracket Pattern

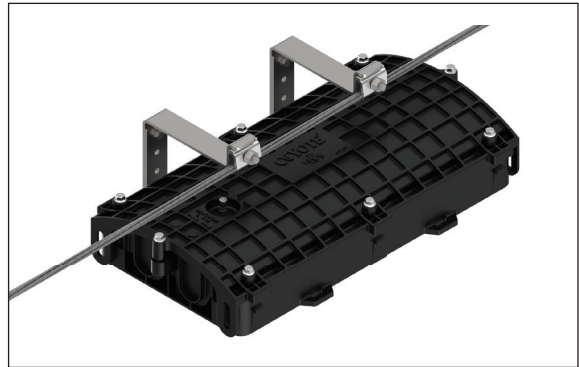


**Step #4** Attach the strand clamps to the strand as shown below.

#### Primary Bracket Pattern



#### Same-Side Bracket Pattern



## SAFETY CONSIDERATIONS

This application procedure is not intended to supersede any company construction or safety standards. This procedure is offered only to illustrate safe application for the individual.

**FAILURE TO FOLLOW THESE PROCEDURES MAY RESULT IN PERSONAL INJURY OR DEATH.**

This product may be removed and reinstalled during the initial installation if it is in good condition. After extended service life, it is recommended the product not be reused once removed from service.

**Do not modify this product under any circumstances.**

This product is intended for use by trained technicians only. **This product should not be used by anyone who is not familiar with, and not trained to use it.**

When working in the area of energized lines, extra care should be taken to prevent accidental electrical contact. Be sure to wear proper safety equipment per your company protocol.

For proper performance and personal safety, be sure to select the proper size PREFORMED™ product before application.

PREFORMED products are precision devices. To ensure proper performance, they should be stored in cartons under cover and handled carefully.



# PREFORMED LINE PRODUCTS

P.O. Box 91129, Cleveland, Ohio 44101 • 440.461.5200 • [preformed.com](http://preformed.com) • email: [inquiries@preformed.com](mailto:inquiries@preformed.com)

SP3583