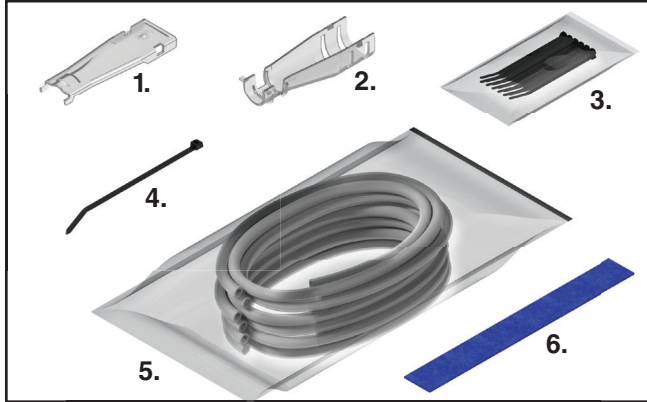




COYOTE® Unitube Cable Breakout Kit

Be sure to read and completely understand this procedure before applying product. Be sure to select the proper PREFORMED™ product before application.

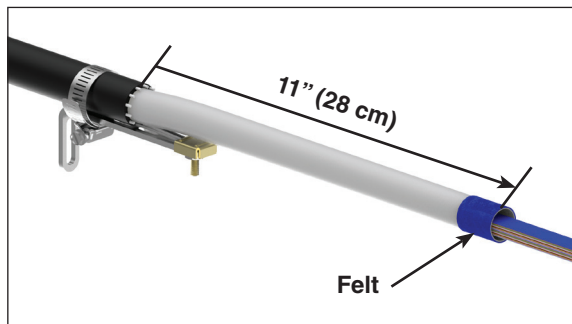


NOMENCLATURE

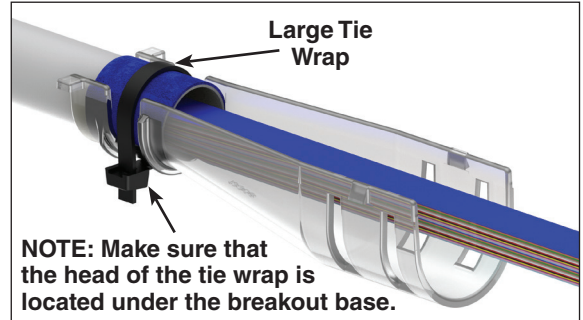
- 1. Unitube Cable Breakout Cover (1)
- 2. Unitube Cable Breakout Base (1)
- 3. 12ct Bag of Small Tie Wraps (1)
- 4. Large Tie Wrap (3)
- 5. Transport Tubing Kit (1)
- 6. Felt Strip (2)

PLP Catalog Number	Description
80061500	COYOTE Unitube Cable Breakout Kit

Step #1 Remove the unitube 11" (28 cm) from the cable sheath opening. Wrap the end of the unitube with a piece of felt as shown below.

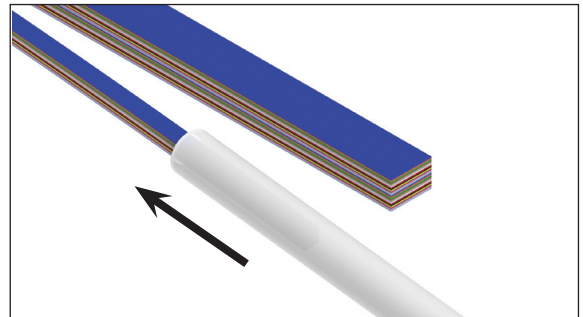


Step #2 Secure the breakout base to the unitube with the large tie wrap provided.

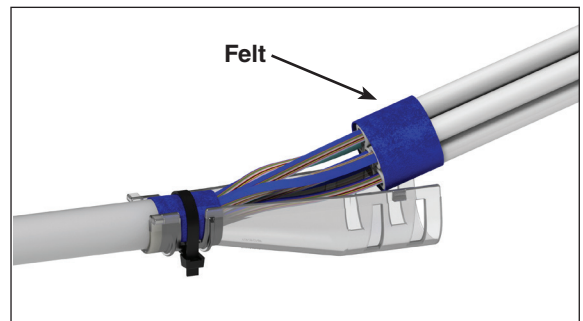


Step #3 Separate the ribbon fibers into groups and install a piece of transport tube over each group. Make sure that each transport tube is long enough to route from the end of the breakout base to the designated splice tray.

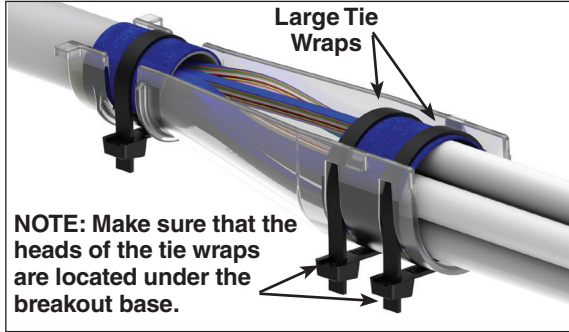
Each transport tube provided can route a maximum of (12) 12-fiber ribbon matrices.



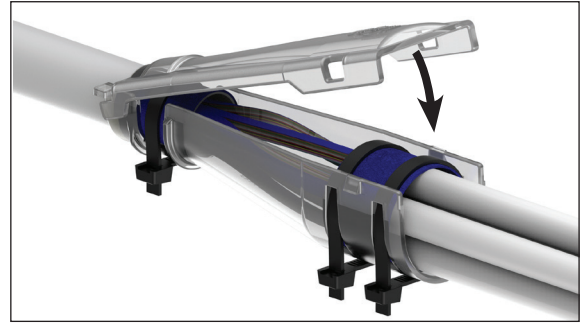
Step #4 Align the ends of each transport tube and bundle them with a piece of felt as shown below.



Step #5 Secure the bundled transport tubes to the breakout base with the large tie wraps provided.



Step #6 Position the legs of the cover under the tabs of the base as shown below. Rotate the cover down and snap the cover onto the base.



SAFETY CONSIDERATIONS

This application procedure is not intended to supersede any company construction or safety standards. This procedure is offered only to illustrate safe application for the individual. **FAILURE TO FOLLOW THESE PROCEDURES MAY RESULT IN PERSONAL INJURY OR DEATH.**

Do not modify this product under any circumstances.

This product is intended for use by trained technicians only. **This product should not be used by anyone who is not familiar with, and not trained to use it.**

When working in the area of energized lines, extra care should be taken to prevent accidental electrical contact. Be sure to wear proper safety equipment per your company protocol.

For proper performance and personal safety, be sure to select the proper size PREFORMED™ product before application.

PREFORMED products are precision devices. To insure proper performance, they should be stored in cartons under cover and handled carefully.



PREFORMED LINE PRODUCTS

P.O. Box 91129, Cleveland, Ohio 44101 • 440.461.5200 • preformed.com • email: inquiries@preformed.com
SP3500