



PREFORMED LINE PRODUCTS
The connection you can count on.

Rugged, Reliable and
Field Proven

ARMADILLO® STAINLESS



-  COMMUNICATIONS
-  ENERGY
-  SPECIAL INDUSTRIES
-  SOLAR





PLP Copper Products ARMADILLO® STAINLESS

Design Features:

ARMADILLO Stainless shells are precision formed of stainless steel with an inside liner of neoprene. They feature a permanent gasket-sealing system that requires no re-entry kit or cleaning upon re-entry, and an integral air flange and grounding lead that allow pressurization and grounding through the shell. Each shell kit consists of a top shell half, bottom shell half, LOCK-BAR™ fasteners and torque bars.

For over 30 years, our Stainless Steel Splice Case has been the industry standard, with millions of successful applications around the world, protecting communications cables under even the most severe conditions. This is our premium series for the most demanding applications. It offers superior performance and versatility for virtually any application.

ARMADILLO SELECTION GUIDE

Interchangeability:

The interchangeability of the ARMADILLO Stainless components allows you to configure your products.

Just follow these simple steps:

STEP ONE

Use this table to select the size of the ARMADILLO Stainless required based on the pair count.

STEP TWO

Choose from one of the ARMADILLO Stainless Kits with drillable end plates or the Filling Flange Kits with drillable end plates.

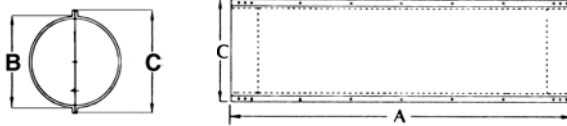
STEP THREE

Select and order the individual components you need.

All components are interchangeable. You can have a closure with a Drilled End Plate on one end and a Sealing Washer End Plate on the other.



Permanent Gasket Sealing System



ARMADILLO Stainless Capacities	
Pair Count of Cables	Size (mm)
50 thru 300	4" x 25" (102 x 635)
300 thru 600	6.5" x 22" (165 x 559)
300 thru 1100	6.5" x 28" (165 x 711)
900 thru 1500	6.5" x 38" (165 x 965)
900 thru 2100	8" x 28" (203 x 711)
1200 thru 2400	8" x 38" (203 x 965)
1500 thru 2700	8" x 45" (203 x 1143)
1500 thru 2700	9.5" x 28" (241 x 711)
1800 thru 3600	9.5" x 38" (241 x 965)
2100 thru 4200	9.5" x 45" (241 x 1143)
2100 thru 4200	*9.5" x 53" (241 x 1356)
2400 thru 3000	12.5" x 28" (318 x 711)
2700 thru 3600	12.5" x 38" (318 x 965)
3000 thru 4200	12.5" x 45" (318 x 1143)
3000 thru 4800	*12.5" x 65" (318 x 1651)

*Shells are welded



Filling Flange

ARMADILLO Stainless Shell Kits								
Size (mm)	Catalog Number		Dimensions (mm)			Sheath Opening	Shipping Weight (kg)	
	Standard	Filling Flange	A	B	C			
4.0" x 25" (102 x 635)	8006750	8006756	25.8" (655)	4.5" (114)	6.0" (152)	16.8" (427)	12# (5)	
6.5" x 22" (165 x 559)	8006510	8006390	22.0" (559)	7.0" (178)	9.3" (235)	12.7" (322)	15# (7)	
6.5" x 28" (165 x 711)	8006474	8006244	28.4" (721)	7.0" (178)	9.3" (235)	19.2" (488)	26# (12)	
6.5" x 38" (165 x 965)	8006751	8006246	38.4" (975)	7.0" (178)	9.3" (235)	29.2" (742)	33# (15)	
8.0" x 28" (203 x 711)	8006776	8006391	28.4" (721)	8.5" (216)	10.5" (267)	19.2" (488)	24# (11)	
8.0" x 38" (203 x 965)	8006777	8006392	38.4" (975)	8.5" (216)	10.5" (267)	29.2" (742)	35# (16)	
8.0" x 45" (203 x 1143)	8006778	8006393	45.2" (1148)	8.5" (216)	10.5" (267)	36.2" (919)	57# (26)	
9.5" x 28" (241 x 711)	8006779	8006245	28.4" (721)	10.0" (254)	12.5" (318)	18.1" (460)	32# (15)	
9.5" x 38" (241 x 965)	8006780	8006247	38.4" (975)	10.0" (254)	12.5" (318)	28.1" (714)	40# (18)	
9.5" x 45" (241 x 1143)	8006781	8006250	45.2" (1148)	10.0" (254)	12.5" (318)	36.2" (919)	52# (24)	
9.5" x 53" (241 x 1346)	8003461	8006758	53.3" (1354)	10.0" (254)	12.5" (318)	43.2" (1097)	56# (25)	
12.5" x 28" (318 x 711)	8006782	8006274	28.4" (721)	13.0" (330)	15.5" (394)	18.1" (460)	41# (19)	
12.5" x 38" (318 x 965)	8006783	8006275	38.4" (975)	13.0" (330)	15.5" (394)	28.1" (714)	51# (23)	
2.5" x 45" (318 x 1143)	8006784	8006276	45.2" (1148)	13.0" (330)	15.5" (394)	36.2" (919)	60# (27)	
12.5" x 65" (318 x 1651)	8006509	n/a	65.0" (1651)	13.0" (330)	15.5" (394)	54.9" (1394)	146# (66)	

NOTE: Capacities based on 24 gauge wire and industry standard splice modules.



Drillable End Plates



Power End Plate Cutter

ARMADILLO® DRILLABLE END PLATE

These end plates offer a more rugged design that can take on your most demanding environments, and are the preferred choice for vault applications. ARMADILLO Drillable End Plates also feature the LOCK-TAPE™ sealing system which has consistently provided superior cable sealing and pullout strength for more than 20 years.

Drillable End Plate features include:

- Best solution when flexibility of drilling pattern is required
- Designed to accept a wide variety of cable quantities and diameters
- Field drillable to customize for specific application needs
- Available with integrated inserts for grounding or aerial suspension
- Available with inserts to allow attachments for air pressurization
- Uses field proven LOCK-TAPE sealing system
- Available in 2 section and 3 section designs

ARMADILLO Drillable End Plates are available in two and three section designs for use with 4" (102 mm), 6.5" (165 mm), 8.0" (203 mm), 9.5" (241 mm), and 12.5" (318 mm) diameter shell kits.

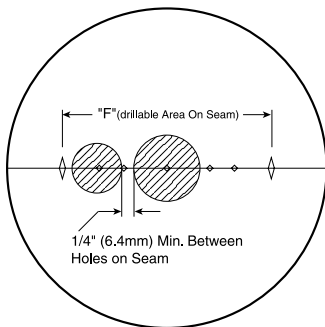
End Plate Size (mm)	Maximum Combined Cable Diameters (mm)			
	1 Cable	2 Cables	3 Cables	4 Cables
4.0" (102)	2.2" (56)	1.95" (50)	1.70" (43)	1.45" (37)
6.5" (165)	4.1" (104)	3.85" (98)	3.60" (91)	3.35" (85)
8.0" (203)	5.6" (142)	5.35" (136)	5.10" (130)	4.85" (123)
9.5" (241)	7.1" (180)	6.85" (174)	6.60" (168)	6.35" (161)
12.5" (318)	9.3" (236)	9.05" (230)	8.80" (224)	8.55" (217)

End Plate Size	"F" (mm)	"G" (mm)
4.0" (102)	2.2" (56)	N/A
6.5" (165)	4.1" (104)	3/8" (10)
8.0" (203)	5.6" (142)	1/2" (13)
9.5" (241)	7.1" (180)	1/2" (13)
12.5" (318)	9.3" (236)	3/4" (19)

PLP Copper Products

ARMADILLO DRILLABLE END PLATE KITS

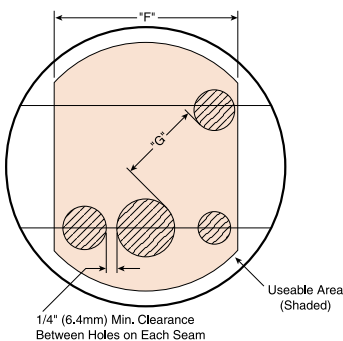
Two-Section End Plates: One per kit



Two Section End Plate

Size (mm)	Catalog Number Inserts				Shipping Weight (kg)
	None	Ground Only	Air Valve Only	Ground & Air Valve	
4.0" (102)	8003539	8003550	8003555	8003560	3# (1)
6.5" (165)	8003540	8003551	8003556	8003561	4# (2)
8.0" (203)	8003541	8003552	8003557	8003562	6# (3)
9.5" (241)	8003542	8003553	8003558	8003563	8# (4)
12.5" (318)	8003284	8003554	8003559	8003564	12# (5)

Three-Section End Plates: One per kit



Three Section End Plate

Size (mm)	Catalog Number Inserts				Shipping Weight (kg)
	None	Ground Only	Air Valve Only	Ground & Air Valve	
6.5" (165)	8000361	8003094	80805422	80805365	4# (2)
8.0" (203)	8003110	8003532	8003137	8003533	6# (3)
9.5" (241)	800081098	8003013	8003121	80805376	8# (4)
12.5" (318)	8003055	8003534	8003122	8003367	12# (5)



Power End Plate Cutter



Sealing Washer End Plates



Sealing Washer Cutter



World Headquarters
660 Beta Drive
Cleveland, Ohio 44143

Mailing Address:
P.O. Box 91129
Cleveland, Ohio 44101

Telephone: 440.461.5200
Fax: 440.442.8816
Web Site: www.preformed.com
E-mail: inquiries@preformed.com

© 2011 Preformed Line Products
Printed in U.S.A.
CO-SS-1015-2
11.11.2M

PLP Copper Products

ARMADILLO® DRILLABLE END PLATE KITS

Power End Plate Cutter and Accessories		
Catalog Number	Description	Standard Carton Qty.
8000452	Power End Plate Cutter (only)	1 Unit
8000454	Power End Plate Cutter and Case with Blade Kit	1 Kit
8000455	Power End Plate Cutter with Blade Kit	1 Kit
8000468	Power End Plate Cutter Lift Kit	1 Kit
8000445	Carrying Case	1 Unit
8000453	Blade Kit (Blades A-Z)	1 Set
8000417A-DD	Individual Blades (A-DD)	1 Unit
80851659	Electric Drill With Socket	1 Unit
80801944	Drill Motor Adapter (For other than PREFORMED Drill)	1 Unit

PLP Copper Products

ARMADILLO® SEALING WASHER END PLATES

With the introduction of the ARMADILLO Series comes a new end plate design. The ARMADILLO Sealing Washer End Plate is designed to eliminate major tooling costs, field drilling and extensive personal training.

The ARMADILLO Sealing Washer End Plate is ideal for OSP applications that do not require more than one two or three cable entry ports.

The features and benefits of the ARMADILLO Sealing Washer End Plate include:

- Fixed quantity and diameter of any port
- No power source required for end plate assembly
- Uses mastic sealing system, no C-cement required
- Re-enterable and re-usable
- Integrated features for grounding and air valve attachment
- Plugging spools for unused ports
- Two piece sealing washer to strengthen washer seam

ARMADILLO Sealing Washer End Plates are available in one to three cable entry port designs for use with 4" (102 mm), 6.5" (166 mm) and 9.5" (241 mm) diameter shell kits.

Catalog Number	Description
8000480	Sealing Washer Cutter Kit, includes washer cutter, spare blade & tote bag.
8000481	Blades for Washer Cutter, 3 Blades

Catalog Number	Description (mm)	Kits per Carton
8003543	1.0" (25) Sealing Washer Kit	25
8003544	1.6" (41) Sealing Washer Kit	25
8003545	2.2" (56) Sealing Washer Kit	25
8003546	2.8" (71) Sealing Washer Kit	25
8003547	3.4" (86) Sealing Washer Kit	25

Each kit contains 4 sealing washer halves & 1 plug spool

ARMADILLO Sealing Washer End Plate Kits			
Catalog Number	Size (mm)	Ports	Shipping Wt (kg)
8003514	4.0" (102)	2-Port	4# (2)
8003515	6.5" (165)	1-Port	4# (2)
8003516	6.5" (165)	2-Port	4# (2)
8003517	6.5" (165)	3-Port	4# (2)
8003518	8.0" (203)	1-Port	6# (3)
8003519	8.0" (203)	2-Port	6# (3)
8003520	8.0" (203)	3-Port	6# (3)
8003630*	9.5" (241)	1-Port	8# (4)
8003521	9.5" (241)	2-Port	7# (3)
8003522	9.5" (241)	3-Port	7# (3)
8003621*	12.5" (318)	2-Port	12# (5)
8003620*	12.5" (318)	3-Port	12# (5)

*Uses Drillable End Plate Design with factory sealing washer pockets

Cable Capacities

