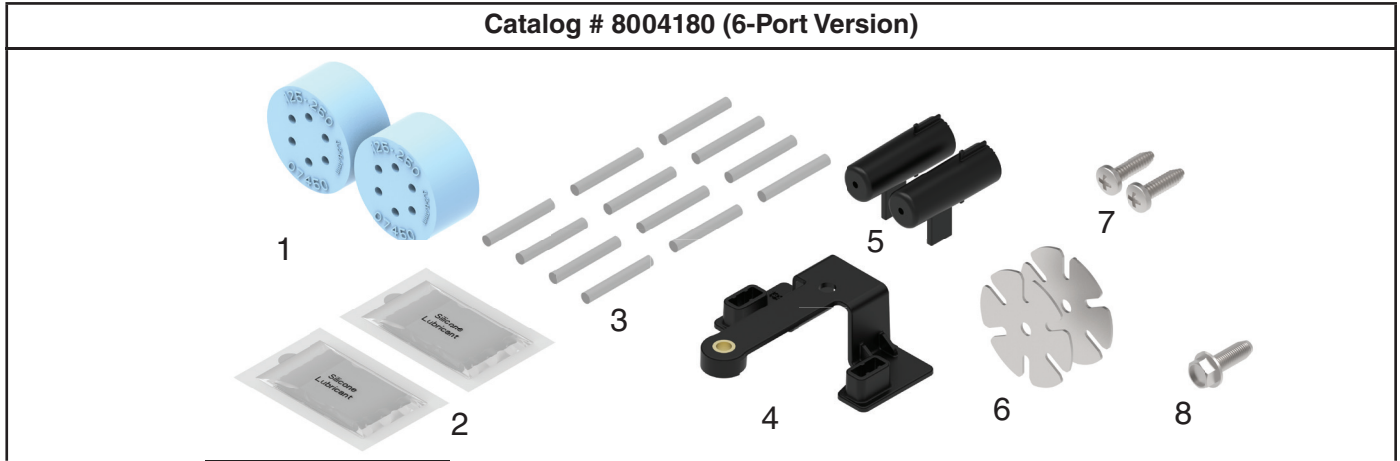




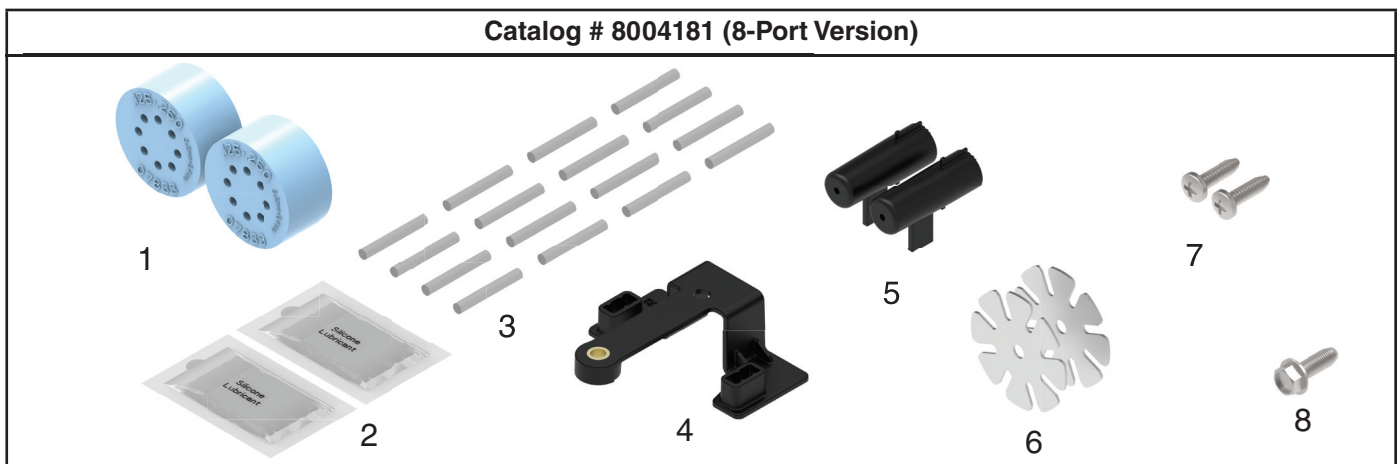
COYOTE® In-Line RUNT Flat Drop Cable Retention

Be sure to read and completely understand this procedure before applying product. Be sure to select the proper PREFORMED™ product before application.



NOMENCLATURE

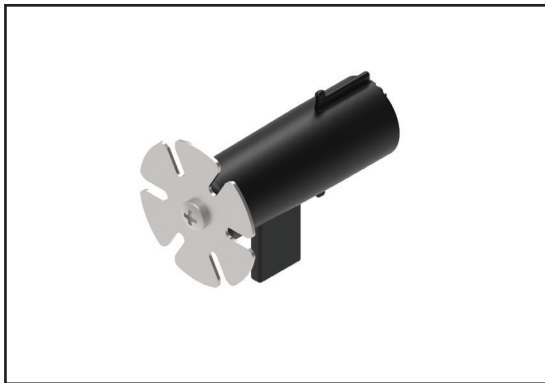
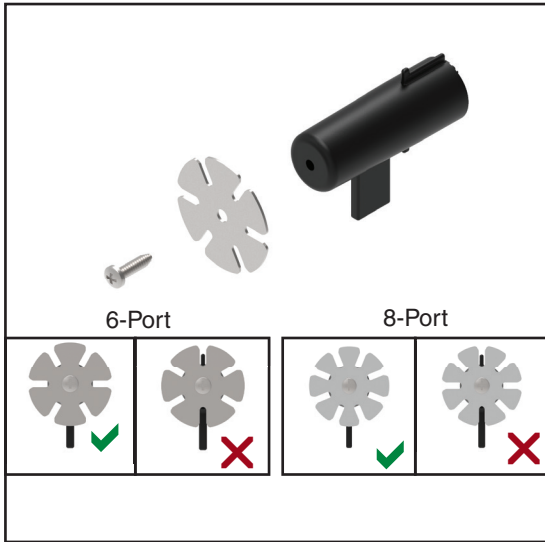
- | | |
|---------------------------|--------------------------------------|
| 1. 6-Hole Grommets (2) | 5. Bobbins (2) |
| 2. Silicone Lubricant (2) | 6. Cable Retention Clips (2) |
| 3. Grommet Plugs (12) | 7. Bobbin Screws (Phillips Head) (2) |
| 4. Bracket (1) | 8. Bracket Screw (Hex Head) (1) |



NOMENCLATURE

- | | |
|---------------------------|--------------------------------------|
| 1. 8-Hole Grommets (2) | 5. Bobbins (2) |
| 2. Silicone Lubricant (2) | 6. Cable Retention Clips (2) |
| 3. Grommet Plugs (16) | 7. Bobbin Screws (Phillips Head) (2) |
| 4. Bracket (1) | 8. Bracket Screw (Hex Head) (1) |

Step #1 Screw a Cable Retention Clip into each Bobbin with a Phillips-Head Screw. Ensure that the Bobbin tab is not in line with any of the slots on the Clip.

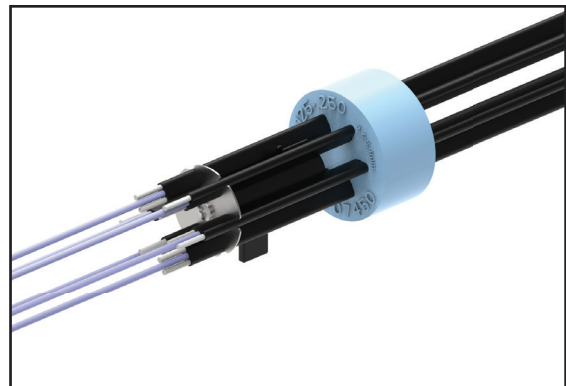
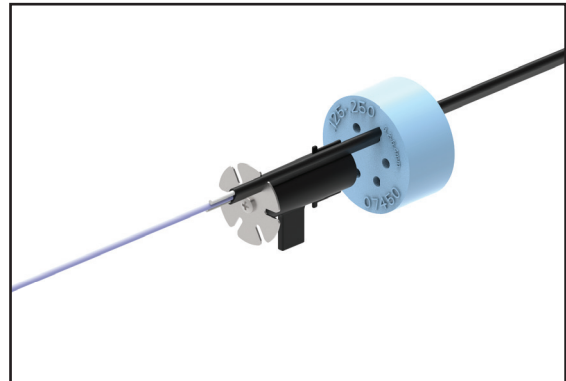
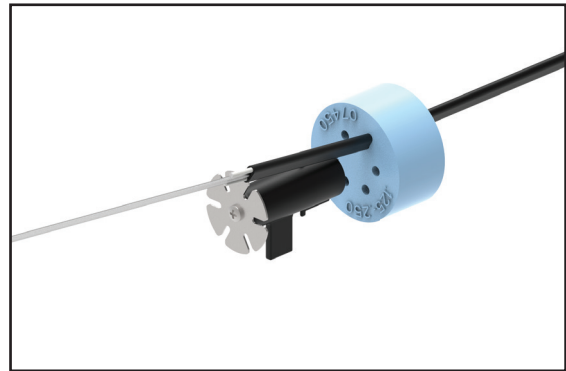


Step #2 Trim the flat-drop strength members back as close to the sheath opening as possible. Insert the drop cables into each grommet, as well as the corresponding slot on each Cable Retention Clip.

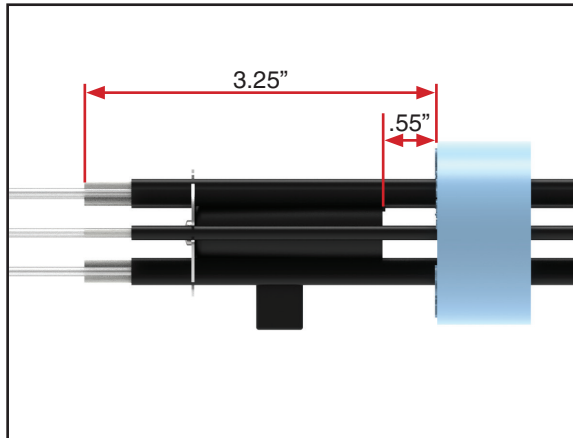
There should be a .55" gap between the grommet and the bobbin.

Ensure that the grommet is about 3.25" from the sheath opening.

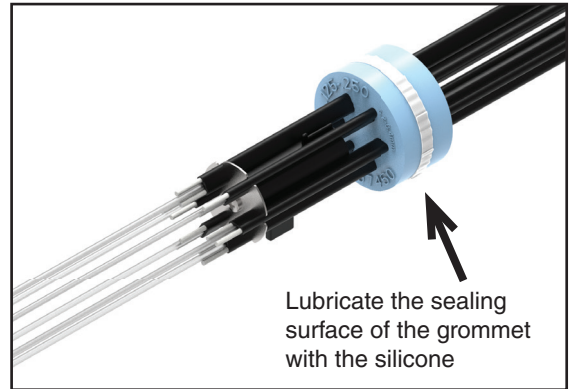
NOTE: Keep the tab on the bobbin facing downwards for easier placement in the closure.



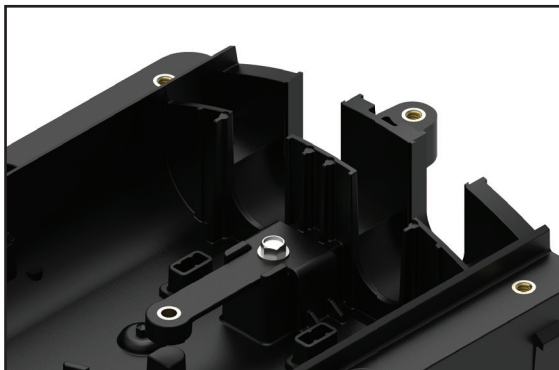
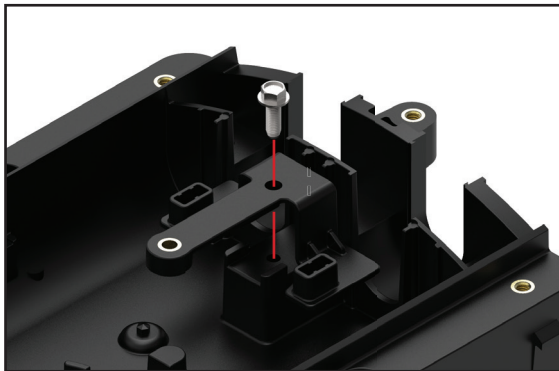
Step #2 (continued)



Step #4 Lubricate the outer surface of each grommet. Spread the lubricant evenly around the outer surface.

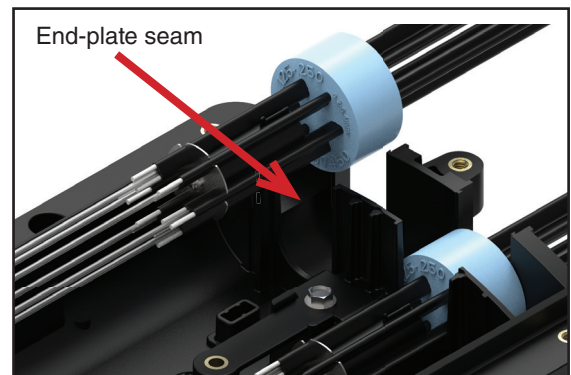


Step #3 Screw the Bracket into the In-Line RUNT with the hex-head screw.

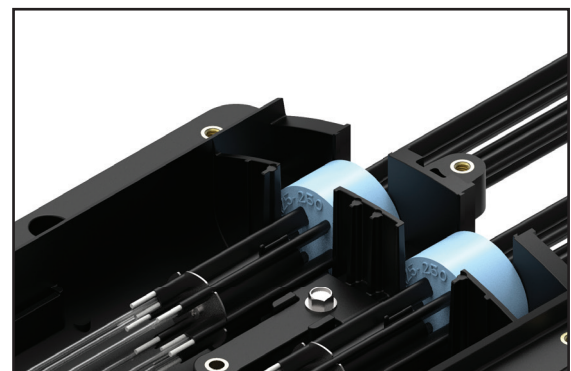


Step #5 Position the grommets into the slots of the base, while also inserting the Bobbin tabs into the corresponding slots on the Bracket.

NOTE: Do not align the grommet slits with the end-plate seam.



NOTE: Refer back to the application procedure for the COYOTE In-Line RUNT Closure Kit as needed.



SAFETY CONSIDERATIONS

This application procedure is not intended to supersede any company construction or safety standards. This procedure is offered only to illustrate safe application for the individual.

FAILURE TO FOLLOW THESE PROCEDURES MAY RESULT IN PERSONAL INJURY OR DEATH.

Do not modify this product under any circumstances.

This product is intended for use by trained technicians only. **This product should not be used by anyone who is not familiar with, and not trained to use it.**

When working in the area of energized lines, extra care should be taken to prevent accidental electrical contact. Be sure to wear proper safety equipment per your company protocol.

For proper performance and personal safety, be sure to select the proper size PREFORMED™ product before application.

PREFORMED products are precision devices. To ensure proper performance, they should be stored in cartons under cover and handled carefully.



PREFORMED LINE PRODUCTS

The connection you can count on.

P.O. Box 91129, Cleveland, Ohio 44101 • 440.461.5200 • preformed.com • email: inquiries@preformed.com

SP3591