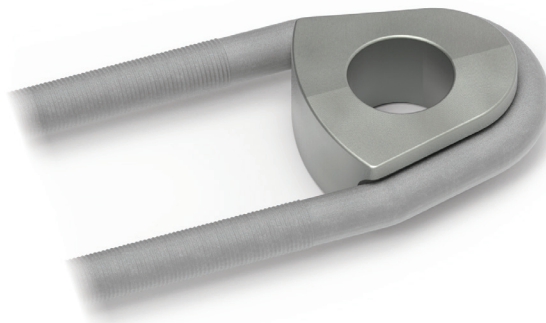


ACCESSORIES

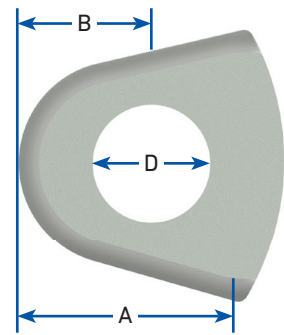
Conformal Castings

Conformal Casting are designed to help ensure the proper support of the U-bolt portion of VARI-GRIP™ Dead-Ends. They are made from galvanized ductile iron and are compatible with VARI-GRIP Dead-Ends designed for EHS strand, bridge strand, and aluminum-clad steel cables.



Conformal Castings

Catalog Number	Strand Size	U-Bolt Diameter	A	B	C	D
			in			
V1SBG	1-1/8" EHS, 1-1/4" EHS, 37#6, 61#8, 37#5, 61#7, 1" BS, 1-1/16" BS, 1-1/8" BS, 1-3/16" BS	1-1/2	5	2.75	2.875	2.875
V1TBG	61#6, 1-1/4" BS, 1-5/16 BS, 1-3/8" BS, 1-7/16" BS	1-1/2	5	3	2.875	3.125
V1VBG	61#5, 1-1/2" BS	1-3/4	5.844	3.75	3.375	3.625
V1WBG	91#6	1-3/4	5.844	4	3.375	3.875



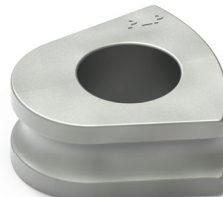
NOTE: To be used with Standard VARI-GRIP Dead-End only. Gen2 VARI-GRIP Dead-Ends do not require this. (Supplied with Dead-Ends using 1-1/2" and 1-3/4" U-Bolts to assure proper support.



Catalog Number:
V1SBG



Catalog Number:
V1TBG



Catalog Number:
V1VBG



Catalog Number:
V1WBG