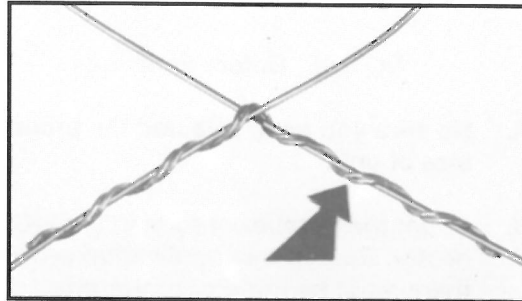


APPLICATION PROCEDURE
& SAFETY CONSIDERATIONS
PREFORMED LINE PRODUCTS



APRIL 2000

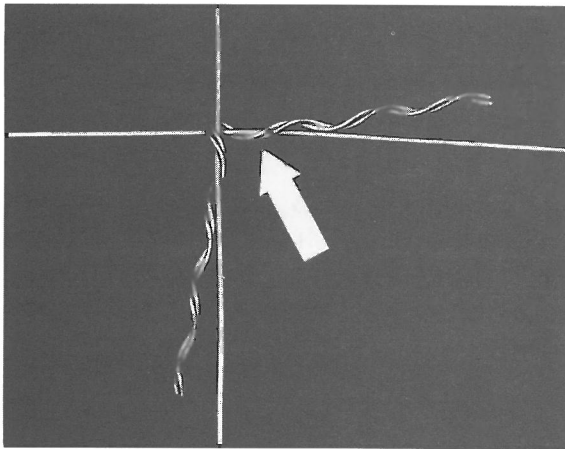
L-CONNECTOR



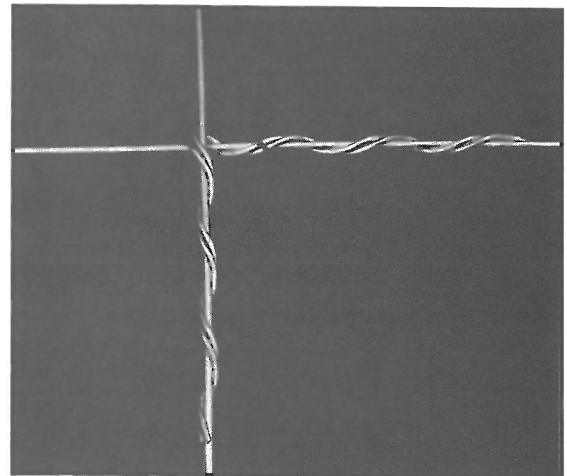
L-Connector applied. (two rods)

NOTICE: Before applying—

- A. Be sure you have selected the proper size of unit.
- B. Count the number of rods in the L-Connector. To use this application procedure there must be only two rods.

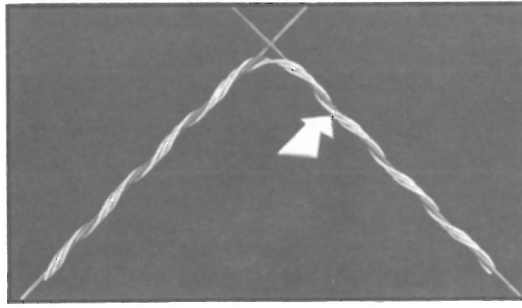


1. Position bend (see arrow) of unit around wires as shown.



2. Wrap on legs to complete installation.

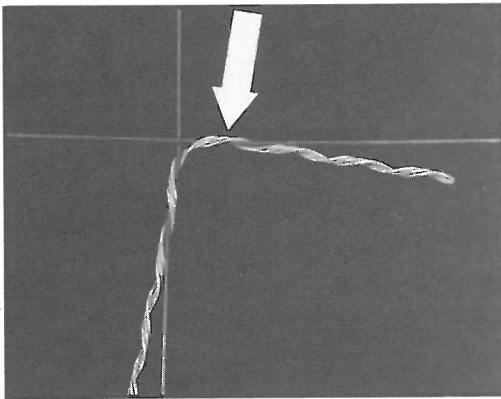
Continue on reverse side for three or more rods application



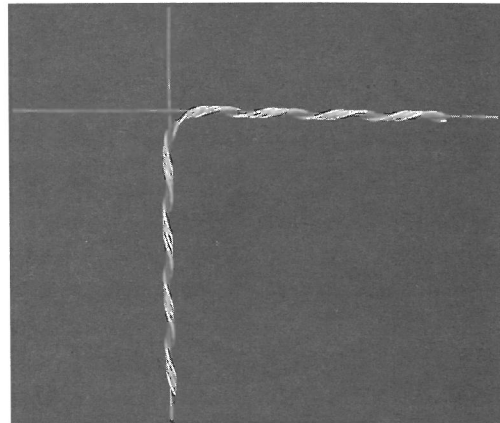
L-Connector applied. (three or more rods)

NOTICE: Before applying—

- A. Be sure you have selected the proper size of unit.
- B. Count the number of rods in the L-Connector. To use this application procedure there must be three or more rods.



1. Position bend (see arrow) of unit around wires as shown.



2. Wrap on legs to complete installation.

SAFETY CONSIDERATIONS

- 1. This application procedure is not intended to supersede any company construction or safety standards. This procedure is offered only to illustrate safe application for the individual. **CAUTION: FAILURE TO FOLLOW THESE PROCEDURES MAY RESULT IN PERSONAL INJURY OR DEATH.**
- 2. This product is intended for a single (one-time) use and for the specified application. **CAUTION: DO NOT REUSE OR MODIFY THIS PRODUCT UNDER ANY CIRCUMSTANCES.**
- 3. This product is intended for use by trained craftspeople only. This product **SHOULD NOT BE USED** by anyone who is not familiar with, and not trained in the use of it.
- 4. When working in the area of energized lines, **EXTRA CARE** should be taken to prevent accidental electrical contact.
- 5. For **PROPER PERFORMANCE AND PERSONAL SAFETY**, be sure to select the proper size **PREFORMED™** product before application.
- 6. **PREFORMED™** Products are precision devices. To insure proper performance, they should be stored in cartons under cover and handled carefully.

PREFORMED LINE PRODUCTS 

P.O. Box 91129, Cleveland, Ohio 44101 • 440.461.5200 • www.preformed.com • e-mail: inquiries@preformed.com