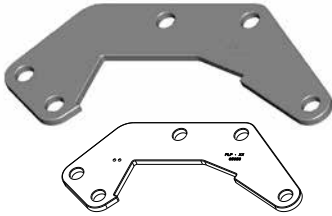
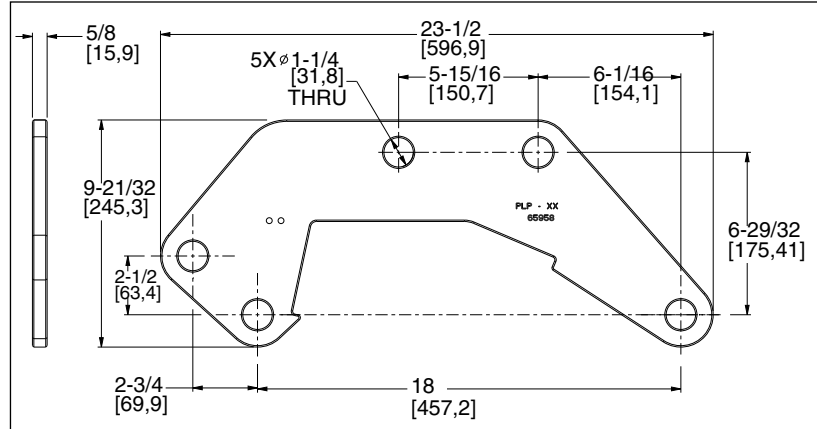


Transmission Line String Hardware

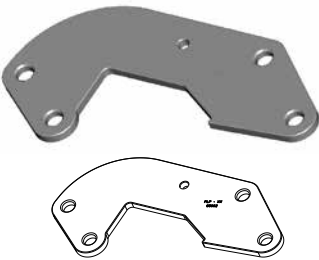
Yoke Plate, Crescent, 30K (Per Hole) – Catalog No. YPC-65958



| Features | |
|-------------------------------|----------------------------------|
| Body | Forged steel, hot dip galvanized |
| Approximate weight | 20 lbs (9.1 kg) |
| Rated breaking strength (RBS) | 30,000 lbs (133 kN) |



Yoke Plate, Crescent, 50K (Per Hole) – Catalog No. YPC-65962



| Features | |
|-------------------------------|----------------------------------|
| Body | Forged steel, hot dip galvanized |
| Approximate weight | 33 lbs (15 kg) |
| Rated breaking strength (RBS) | 50,000 lbs (222 kN) |

