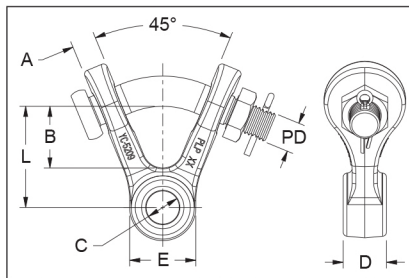
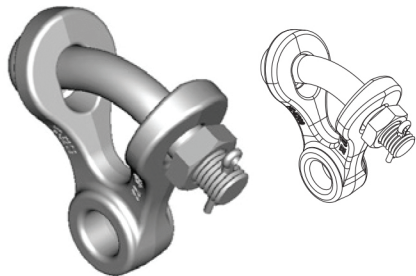


# Y-Clevis Eye



Features	
Body	Ductile iron, hot dip galvanized
Hardware	Galvanized Steel
Cotter Pin	Stainless Steel

Catalog Number	General Dimensions – inches (mm)							Vertical Ultimate Strength lbf (kN)	Wt. Per 100 Units lbs (kg)
	A	B	C	D	E	L	PD		
YC-5206	19/32 (15)	1-3/4 (44.5)	11/16 (17.5)	5/8 (15.9)	1-5/8 (41.3)	2-19/32 (66)	3/4 (19)	15,000 (67)	170 (77)
YC-5207	19/32 (15)	1-3/4 (44.5)	11/16 (17.5)	3/4 (19)	1-5/8 (41.3)	2-7/16 (61.9)	3/4 (19)	20,000 (84)	170 (77)
YC-5209	19/32 (15)	1-1/2 (38.1)	13/16 (20.6)	1-1/16 (26.9)	1-5/8 (41.3)	2-1/2 (63.5)	3/4 (19)	25,000 (111)	173 (78)
YC-5211	19/32 (15)	1-1/2 (38.1)	13/16 (20.6)	2-1/8 (54.0)	1-5/8 (41.3)	2-1/2 (63.5)	3/4 (19)	25,000 (111)	195 (88)
YC-5212	19/32 (15)	1-1/2 (38.1)	11/16 (17.5)	1 (25.4)	1-5/8 (41.3)	2-1/2 (63.5)	3/4 (19)	25,000 (111)	180 (81)
YCE-50	3/4 (19)	1-19/32 (40.6)	13/16 (20.6)	1-1/8 (28.6)	2 (50.8)	2-19/32 (66)	7/8 (22)	50,000 (222)	260 (117)
YC-9030	19/32 (15)	1-7/16 (36.5)	11/16 (17.5)	5/8 (15.9)	1-5/8 (41.3)	2-7/16 (61.9)	3/4 (19)	15,000 (67)	1.2 (.56)
YC-9031	19/32 (15)	1-7/16 (36.5)	11/16 (17.5)	3/4 (19.1)	1-7/10 (43.2)	2-7/16 (61.9)	3/4 (19)	25,000 (111)	1.3 (.6)
YC-9032	19/32 (15)	1-7/16 (36.5)	11/16 (17.5)	1-1/4 (31.8)	1-7/10 (43.2)	2-7/16 (61.9)	3/4 (19)	25,000 (111)	1.5 (.7)
YC-9033	19/32 (15)	1-7/16 (36.5)	11/16 (17.5)	1-3/4 (44.5)	1-7/10 (43.2)	2-7/16 (61.9)	3/4 (19)	25,000 (111)	1.7 (.8)
YC-9034*	19/32 (15)	1-7/16 (36.5)	11/16 (17.5)	2-1/4 (57.2)	1-7/10 (43.2)	2-7/16 (61.9)	3/4 (19)	30,000 (133)	1.9 (.9)

\*Component is forged steel.