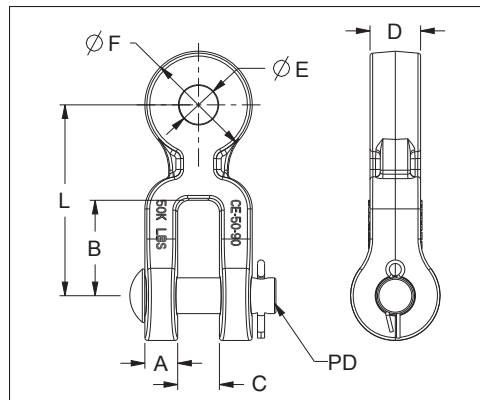
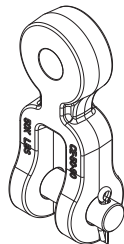
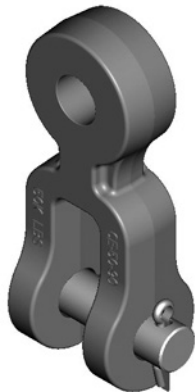


Transmission Line String Hardware

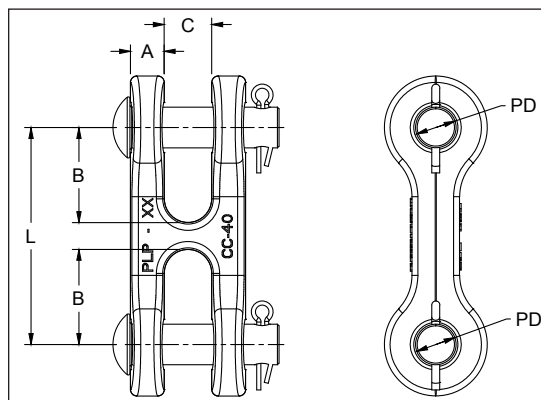
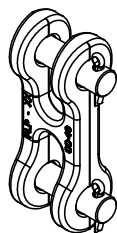
Rotated Clevis Eye



Features	
Body	Ductile iron, hot dip galvanized
Hardware	Galvanized Steel
Cotter Pin	Stainless Steel

Catalog Number	General Dimensions – inches (mm)								Vertical Ultimate Strength lbf (kN)	Wt. Per 100 Units lbs (kg)
	A	B	C	D	E	F	L	PD		
CE-30-90	1/2 (12.7)	2-1/2 (63.5)	7/8 (22.4)	1-1/16 (26.9)	13/16 (20.6)	2 (50.8)	4-1/2 (114.3)	5/8 (16)	30,000 (133)	201 (91)
CE-50-90	11/16 (17.2)	2 (50.8)	7/8 (22.4)	1-1/16 (26.9)	13/16 (20.6)	2-1/4 (57.2)	4 (101.6)	3/4 (19)	50,000 (222)	290 (131)
CE-9025	1/2 (12.7)	1-1/4 (32)	7/8 (22.2)	5/8 (15.9)	11/16 (17.5)	1-21/32 (42)	2-7/8 (73)	5/8 (16)	15,000 (67)	101 (46)
CE-9026	1/2 (12.7)	1-1/4 (32)	7/8 (22.2)	3/4 (19)	11/16 (17.5)	1-21/32 (42)	2-7/8 (73)	5/8 (16)	25,000 (111)	106 (48)
CE-9027	1/2 (12.7)	1-1/4 (32)	7/8 (22.2)	1-1/4 (32)	11/16 (17.5)	1-21/32 (42)	2-7/8 (73)	5/8 (16)	25,000 (111)	127 (58)
CE-9028	1/2 (12.7)	1-1/4 (32)	7/8 (22.2)	1-3/4 (44.5)	11/16 (17.5)	1-21/32 (42)	2-7/8 (73)	5/8 (16)	25,000 (111)	146 (66)
CE-9029	1/2 (12.7)	1-1/4 (32)	7/8 (22.2)	2-1/4 (57.2)	11/16 (17.5)	1-21/32 (42)	2-7/8 (73)	5/8 (16)	25,000 (111)	164 (74)

Clevis Clevis – 30K & 40K



Features	
Body	Ductile iron, hot dip galvanized
Hardware	Galvanized Steel
Cotter Pin	Stainless Steel

Catalog Number	General Dimensions – inches (mm)					Vertical Ultimate Strength lbf (kN)	Wt. Per 100 Units lbs (kg)
	A	B	C	L	PD		
CC-30	17/32 (13.5)	1-3/4 (44.5)	7/8 (22.2)	4 (101.6)	5/8 (16)	30,000 (133)	210 (95)
CC-40	5/8 (15.9)	1-3/4 (44.5)	7/8 (22.2)	4 (101.6)	5/8 (16)	40,000 (177)	270 (122)