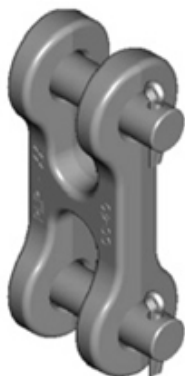


Clevis Clevis – 30K and 40K



Weight: 0.00kg

Dimensions: 0.00cm x 0.00cm x 0.00cm

Description

PLP provides a variety of transmission line **String Hardware** solutions. See the documents and part tables sections below for a complete listing of products offered.

Features

- Body: ductile iron, hot dip galvanized
- Hardware: galvanized steel
- Cotter Pin: stainless steel

Documentation

[Catalog Page](#)