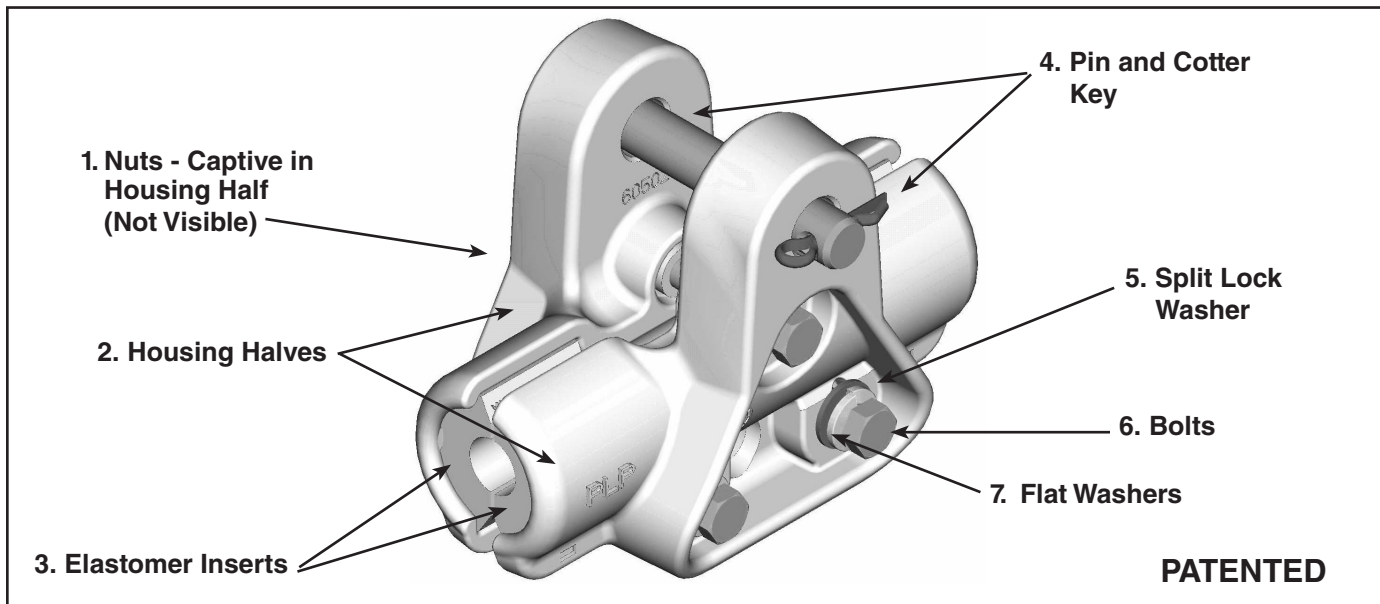




CUSHION-GRIP® Suspension

Be sure to read and completely understand this procedure before applying product. Be sure to select the proper PREFORMED™ product before application.



NOMENCLATURE

- | | |
|---|-----------------------------|
| 1. Nuts (captive in Housing half) | 4. Pin and Cotter Key |
| 2. Housing half (2 each) | 5. Split Lock Washers - (3) |
| 3. Elastomer inserts (2 per housing half) | 6. Bolts - (3) |
| 4. Pin and Cotter Key | 7. Flat Washers - (3) |

APPLICATION

Step #1 Plumb suspension and mark the conductor where the center of the clamp would fall using a felt pen or lumber crayon. Do not notch conductor strands. **Be sure that the conductor surface that will be within the CGS is free from dirt or oxidation. Wire brush clean, if required. This is especially important if the CGS is installed on an existing conductor.**

Remove the pin and cotter key, or bolt, nut and cotter key.

Step #2 Completely disengage the top bolt of the clamp assembly from its nut. Note that this bolt is held captive using a small rubber O-ring.

Step #3 Loosen the bottom two bolts making sure not to back them completely out of their respective nut. This will permit the clamp to pivot open on these bottom two bolts. If the bolts are not completely loosened, installation of the clamp on the largest conductor in the clamp range may be difficult.

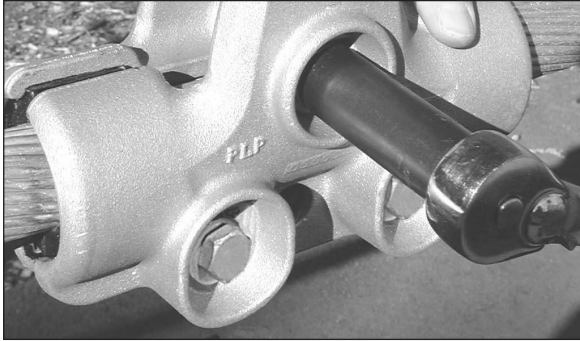
Step #4 Place the clamp on the conductor, lining up the suspension pinholes with the mark made on the conductor and the structure connection point. Push in the top bolt to engage it in the captured nut in the opposite housing half. Tighten by hand until snug.



Install the clamp on the conductor.

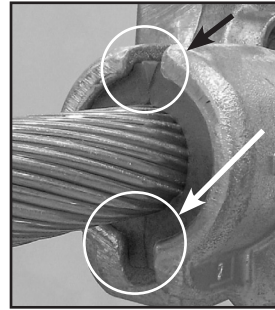
PLP Tip: For extremely corrosive coastal environments, applying a liberal amount of a conductive oxide inhibitor on the conductor within the CUSHION-GRIP® Suspension, will minimize the possibility of build-up of corrosive contaminants.

Step #5 Tighten all three bolts with a ratchet wrench keeping the housing halves parallel (i.e., equal gaps between housing halves on top and bottom).

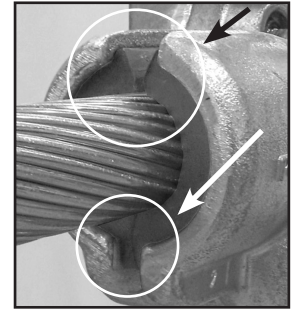


Clamp Range Inches (mm)	Bolt Torque
0.312 - 0.608 (7.9 - 15.4)	15 ft-lbs (21 Nm)
0.609 - 0.883 (15.5 - 22.4)	25 ft-lbs (34 Nm)
0.884 - 1.196 (22.5 - 30.4)	40 ft-lbs (55 Nm)
1.197 - 1.545 (30.4 - 39.2)	40 ft-lbs (55 Nm)
1.546 - 2.052 (39.3 - 52.1)	60 ft-lbs (82 Nm)

Tightening of the bolts should be completed in a circular pattern. When tightening with the torque wrench, start with the top bolt and only partially tighten the top bolt. Then move to the second and third bolts (bottom bolts) and partially tighten to assure an equal gap between housing halves. This should be repeated several times until the proper bolt torque is achieved based on the value in the table below.



Evenly tightened bolts.



NOT evenly tightened bolts.

Step #6 Recheck the bottom two bolts after torquing to ensure that they are properly tightened.

PLP CAUTION:

Failure to properly tighten all three bolts could result in gap noise between the conductor and housing halves.



Completed application of the CUSHION-GRIP Suspension. The work hole located on the bottom of the clamp have a maximum working load of 500 lbs.

SAFETY CONSIDERATIONS

This application procedure is not intended to supersede any company construction or safety standards. This procedure is offered only to illustrate safe application for the individual. **FAILURE TO FOLLOW THESE PROCEDURES MAY RESULT IN PERSONAL INJURY OR DEATH.**

Do not modify this product under any circumstances.

This product is intended for use by trained technicians only. **This product should not be used by anyone who is not familiar with, and not trained to use it.**

When working in the area of energized lines, extra care should be taken to prevent accidental electrical contact.

For proper performance and personal safety, be sure to select the proper size PREFORMED™ product before application.

PREFORMED products are precision devices. To insure proper performance, they should be stored in cartons under cover and handled carefully.



PREFORMED LINE PRODUCTS

P.O. Box 91129, Cleveland, Ohio 44101 • 440.461.5200 • www.preformed.com • e-mail: inquiries@preformed.com

SP2935-10