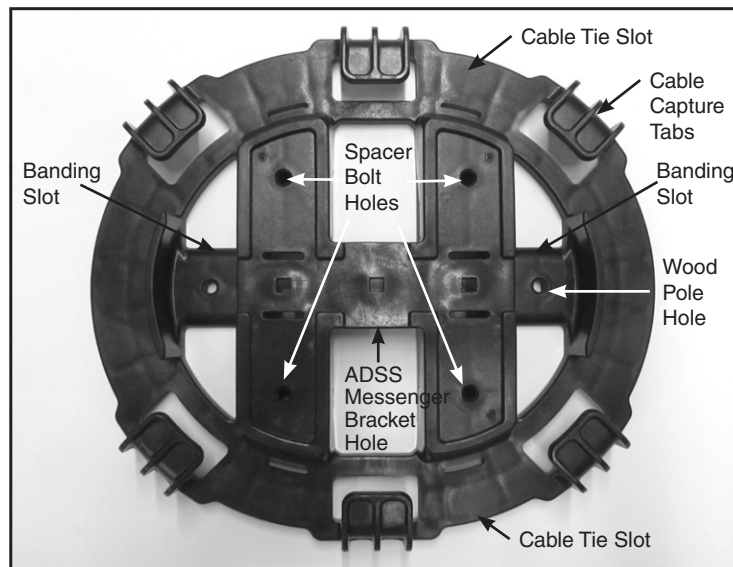




FIBERLIGN® (FDC8) Drop Cable Storage Bracket

Be sure to read and completely understand this procedure before applying product. Be sure to select the proper PREFORMED™ product before application.



DESCRIPTION

The FIBERLIGN® Drop Cable Storage bracket stores slack fiber optic cables with a minimum storage diameter of 8" (203 mm). This includes most round drop cables having nominal diameters of up to .400" (10 mm) and flat drop cables. The FDC8 inner wall is designed to assure that the cable loop diameter is properly installed to avoid fiber attenuation and damage to cable elements.

In aerial environments, the FDC8 ridged design and capture tabs secure and protect the slack cable under high wind and/or ice loading that can distort unprotected slack cable loops. The versatile design can be used "In-Span" for lashed messenger or ADSS systems, on poles (lagged or banded), and in vaults or at service entries.

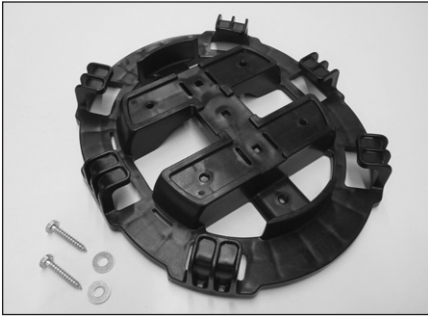
FIBERLIGN (FDC8) Accessories

| Catalog Number | Description | Application | Hardware Included |
|----------------|--|---------------------------------|--|
| FDC8 | FIBERLIGN® Drop Cable 8" Storage - Single Bracket | Vault or Wall Service Entrance | None |
| FDC8M | FIBERLIGN Drop Cable 8" Storage "Messenger" - Single Bracket | Aerial Lashed Messenger Systems | Messenger Bracket, clamp, 1/4" carriage bolts, 1/4" nylon lock nuts |
| FDC8A | FIBERLIGN Drop Cable 8" Storage "ADSS" - Single Bracket | Aerial ADSS Systems | ADSS Bracket, Cable Cushions, 1/4" carriage bolts, 1/4" nylon lock nuts, cable strap |
| FDC8P | FIBERLIGN Drop Cable 8" Storage "Wood Pole" - Single Bracket | Wood Pole | 1/4" x 3" Large Lag Bolts, 1/4" washers, 1/4" nylon lock nuts |
| 7400029 | Messenger Hanger Bracket - One each | Aerial Lashed Messenger Systems | Messenger Hanger Bracket |
| 7400028 | ADSS Hanger Bracket - One each | Aerial ADSS Systems | ADSS Hanger Bracket |
| 7400030 | FDC8 Stacking Kit with Spacers - One kit | Aerial, Pole, Vault, Wall | Fasteners with 2 spacers, 1/4" x 3" large bolts, 1/4" washers, 1/4" nylon lock nuts |

MOUNTING STYLES

POLE MOUNT APPLICATION

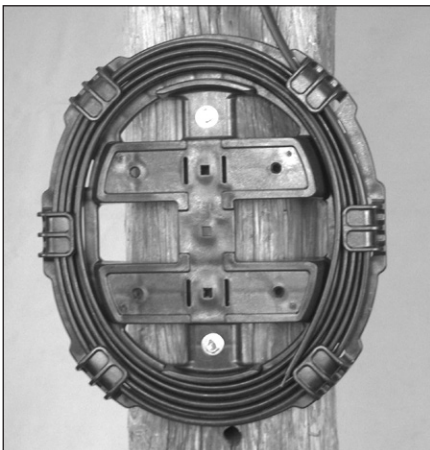
- Step 1** For stacking options, see stacking information to the right.
Fasten the FDC8 to the pole using the 3" lag screw and 1/4" washers included with the wood pole mounting kit. The FDC8 can also be banded to the pole shown in Steps 2 and 3.



- Step 2** Attaching to wood pole (tighten bolts until FDC8 is secure).
DO NOT OVERTIGHTEN.

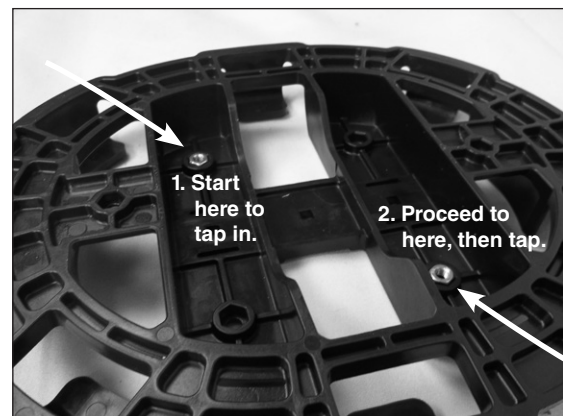
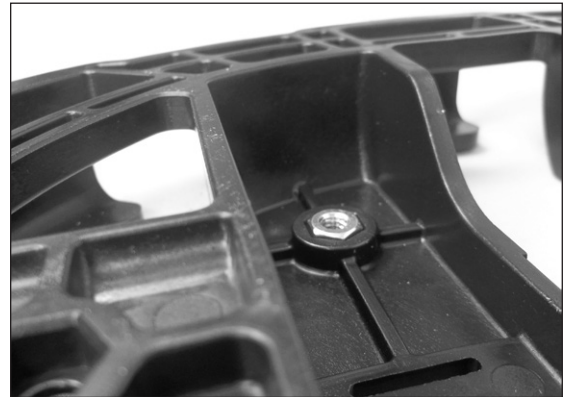
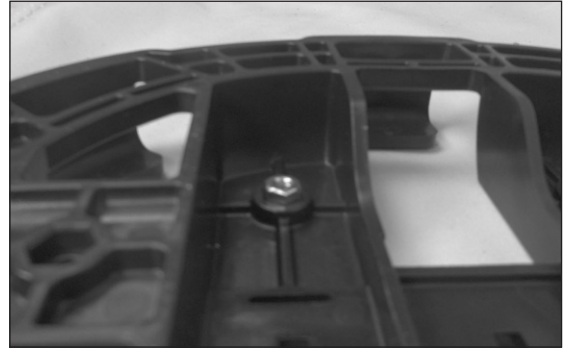


- Step 3** Wood Pole Mounted, shown below.

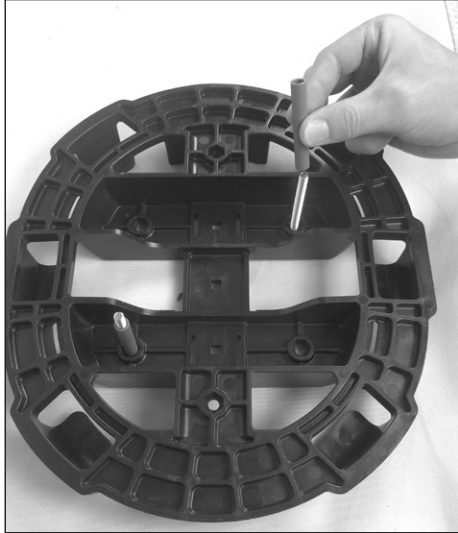


STACKING

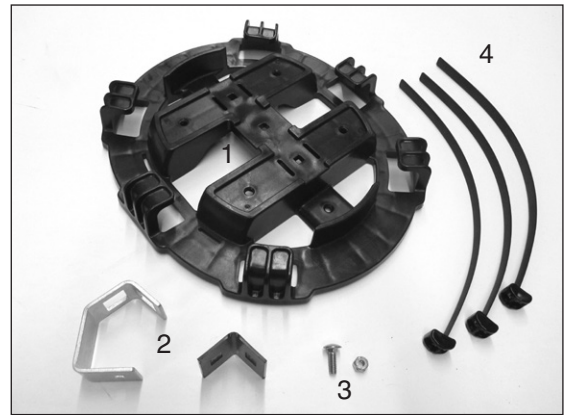
- Step 1** Place the nuts into the recesses on the back of the FDC8 in an opposing pattern, (i.e. one left, one right) and tap in with a small hammer.



Step 2 For the FDC8 to be stacked, assemble the stacking bolts, washers and spacers.

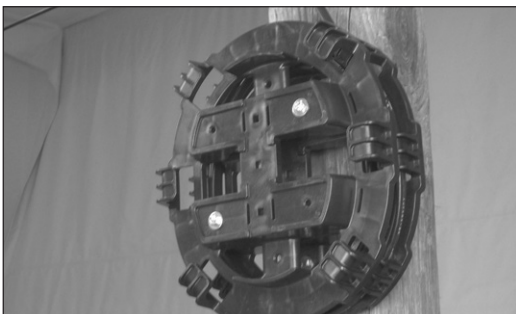
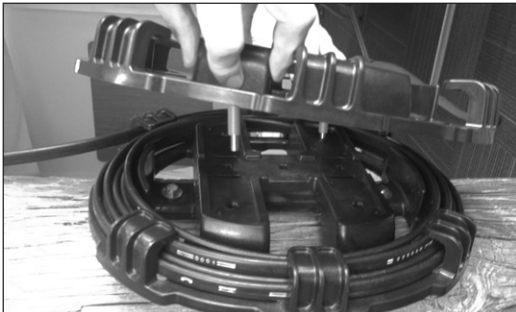


ADSS APPLICATION

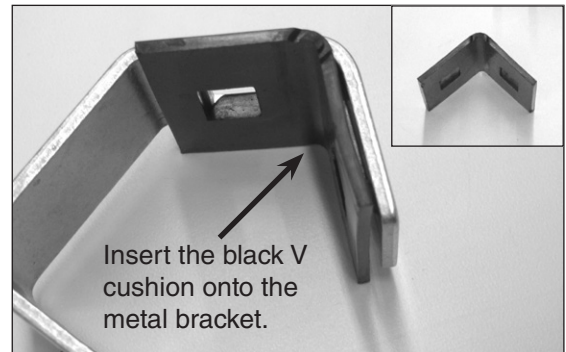


Nomenclature: 1) FDC8 3) Carriage Nut/
2) ADSS Hanger Bracket w/cushion Bolt
4) Cable Tie

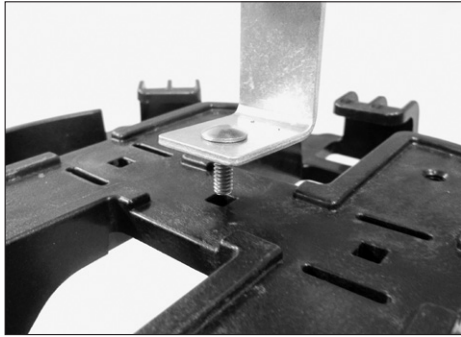
Step 3 Bring the FDC8 with the spacers installed to the mounted FDC8, and hand tighten the bolts and finish with a hand tool to secure.



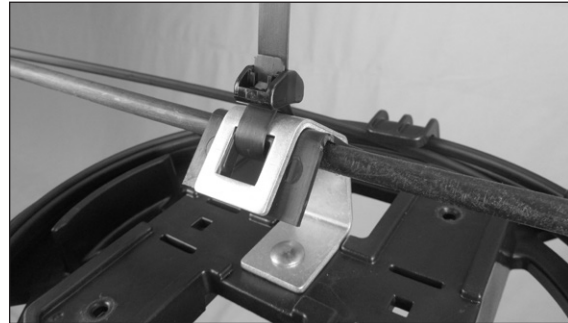
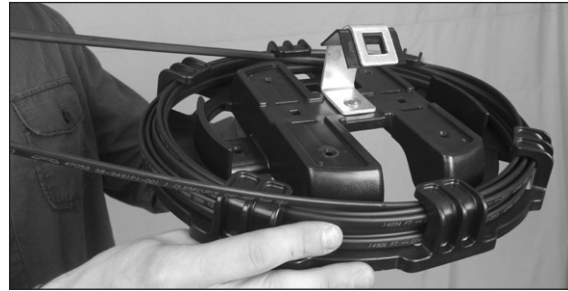
Step 1 Assemble the ADSS Hanger Bracket for the FDC8 aerial mount.



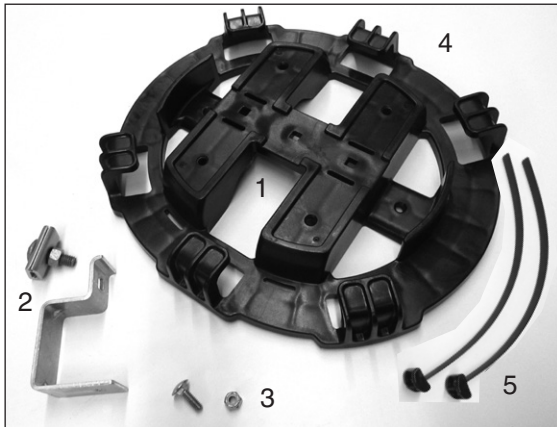
Step 2 Bolt the ADSS Hanger Bracket to the FDC8 as shown in the photos below.



Step 3 Hang the FDC8 onto the ADSS cable in the desired location once the excess drop cable is placed into the FDC8.



MESSENGER APPLICATION

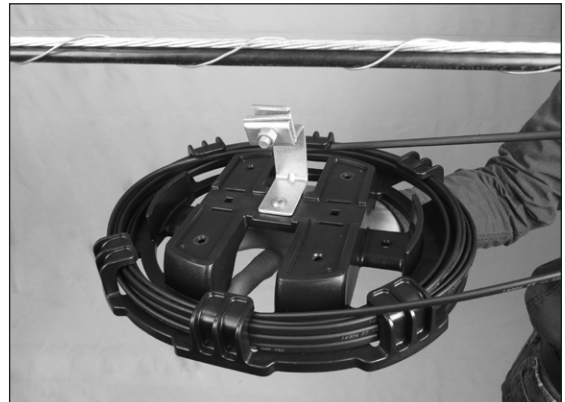
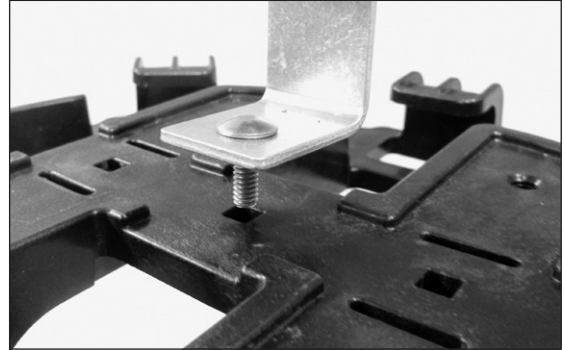


Nomenclature: 1) FDC8 3) Carriage Bolt/
Nut
2) Messenger Hanger Bracket 4) Cable Tie
Hanger Bracket
5) Tie Straps purchased seperately

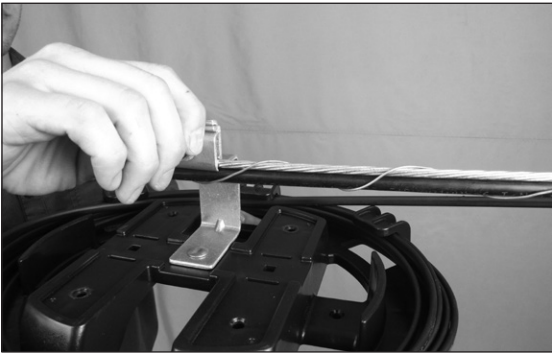
Step 1 Assemble the Messenger Hanger Bracket for FDC8 aerial mount.



Step 2 Bolt the Messenger Hanger Bracket to the FDC8. Then wrap the drop cable into the FDC8.



Step 3 Secure the Messenger Hanger Bracket bracket to the messenger.

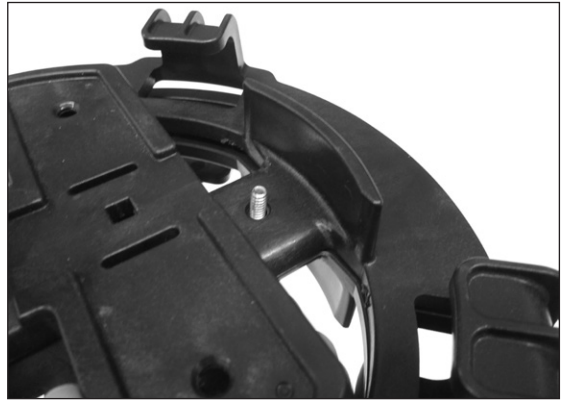


BACK TO BACK APPLICATION

Step 1 Place the 1-1/4" bolt and 1/4" washer through the FDC8 to be added to the existing/installed FDC8.

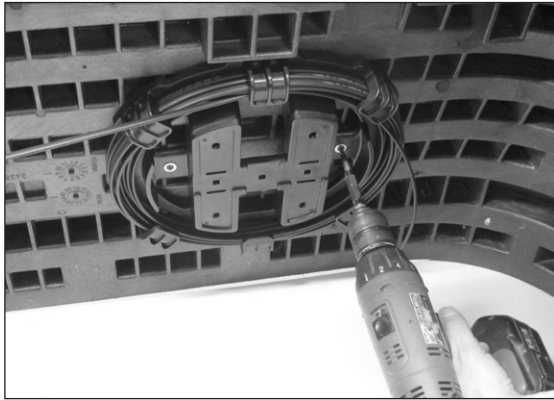


Step 2 Secure the bolt with the nut and washer and repeat for the opposite side.

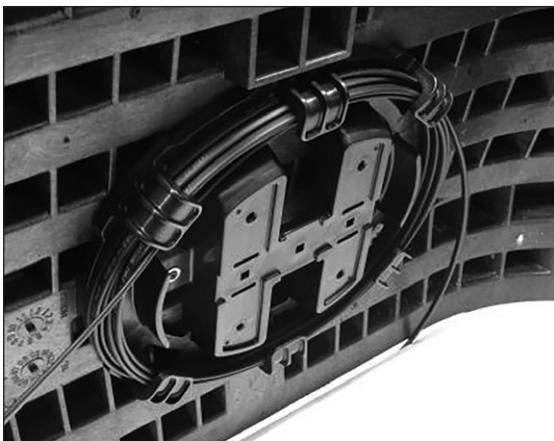


VAULT APPLICATION

- Step 1** Wrap the cable into FDC8 and place in an easy-to-reach location within the vault. Using screws, install the FDC8 in the vault. Common 1/4" corrosion resistant wood screws may be used.



- Step 2** Completed FDC8 in the vault, shown in the photo below.



SAFETY CONSIDERATIONS

This application procedure is not intended to supersede any company construction or safety standards. This procedure is offered only to illustrate safe application for the individual. **FAILURE TO FOLLOW THESE PROCEDURES MAY RESULT IN PERSONAL INJURY OR DEATH.**

Do not modify this product under any circumstances.

This product is intended for use by trained technicians only. **This product should not be used by anyone who is not familiar with, and not trained to use it.**

When working in the area of energized lines, extra care should be taken to prevent accidental electrical contact.

For proper performance and personal safety, be sure to select the proper size PREFORMED™ product before application.

PREFORMED products are precision devices. To insure proper performance, they should be stored in cartons under cover and handled carefully.



PREFORMED LINE PRODUCTS

P.O. Box 91129, Cleveland, Ohio 44101 • 440.461.5200 • www.preformed.com • e-mail: inquiries@preformed.com

SP3259