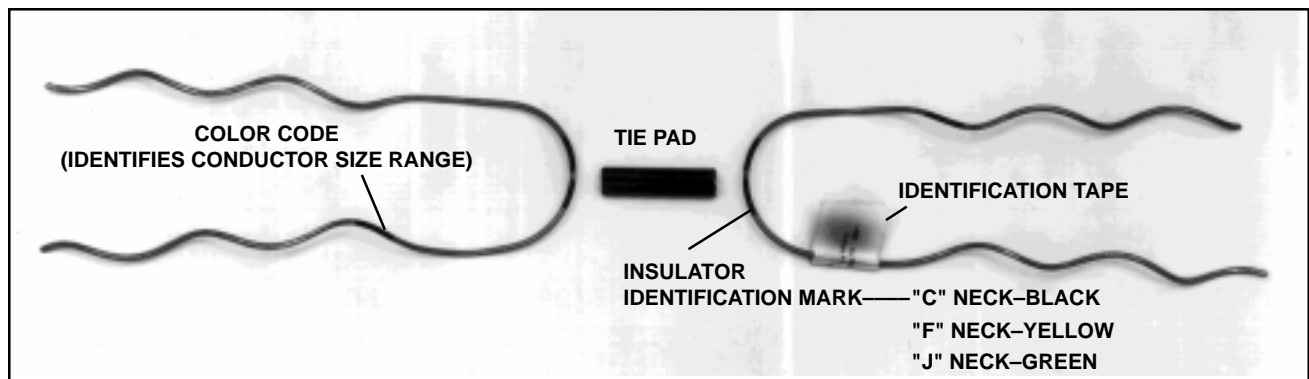


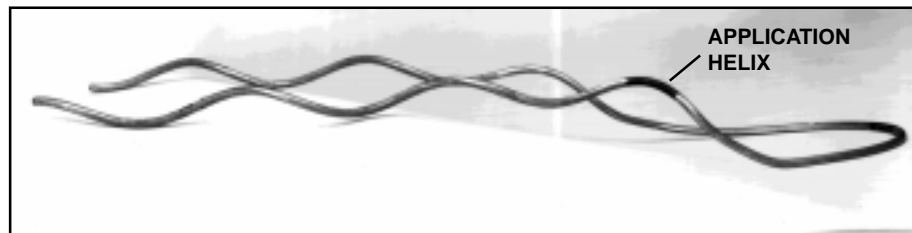


EZ-WRAP™ TWIN-TIE FOR INSULATOR TOP GROOVE

Be sure to read and completely understand this procedure before applying product. Be sure to select the proper PREFORMED™ product before application.



TWIN-TIE as received in the field.



Horizontal view showing application helix

COLD APPLICATION



1.00 Apply the Tie Pad to conductor so that conductor does not come into direct contact with insulator. Make sure the slit in the pad faces up and away from insulator groove.



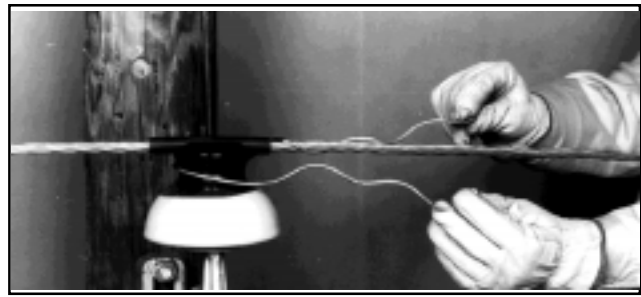
2.00 With the application helix in the upright position, install half of the TWIN-TIE around the neck of the insulator. Slide it parallel to the conductor until the loop of the tie rests against the neck of the insulator.

PLP TIP: Both sections of the TWIN-TIE are identical, and therefore can be applied in either direction on the conductor and around the insulator.



3.00 Start to wrap the leg with the application/ color code as shown.

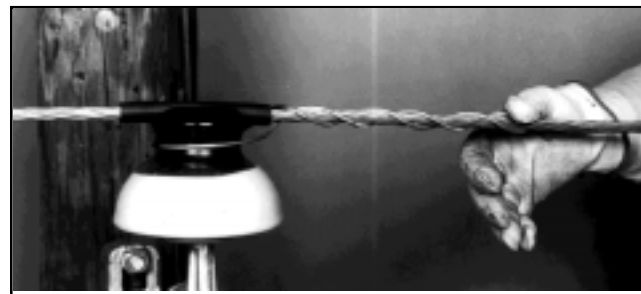
PLP TIP: For ease of application, it may be necessary to align and hold the second leg of the tie under the conductor prior to applying the first leg.



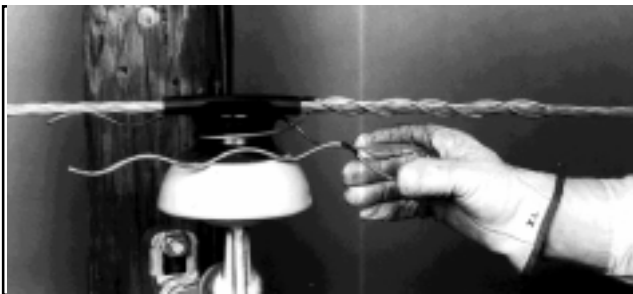
4.00 Lift the leg up and over the conductor (it will hook naturally onto the conductor without any pressure).



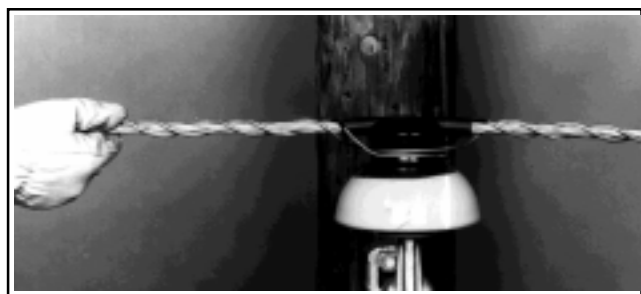
5.00 Continue to apply the first leg to completion. Be sure to snap the end of the leg into position with slight thumb pressure.



6.00 Wrap the other leg by going under the conductor as shown and snap the leg into position in the same manner. **CAUTION: Make sure tie loop is tight on insulator neck and under insulator head.**



7.00 Repeat steps 2.00–6.00 to install the other half of the TWIN-TIE...

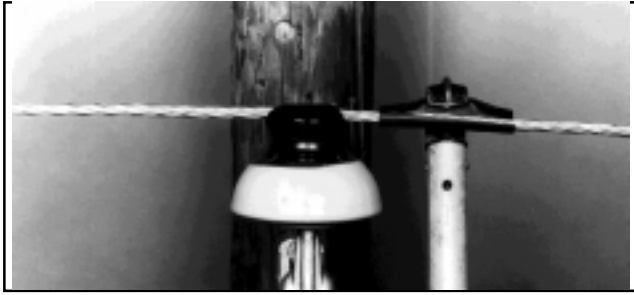


...making sure legs are snapped into position.

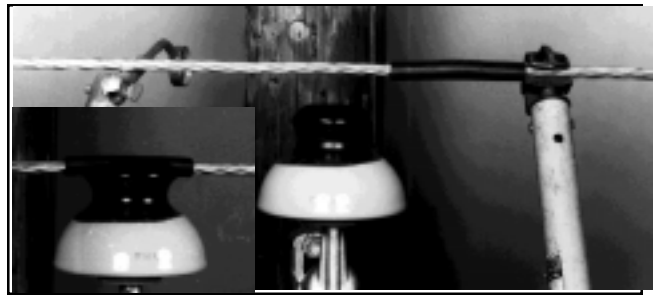


8.00 The application is now complete.

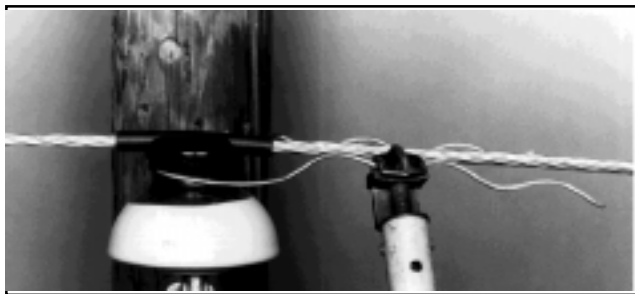
HOT APPLICATION



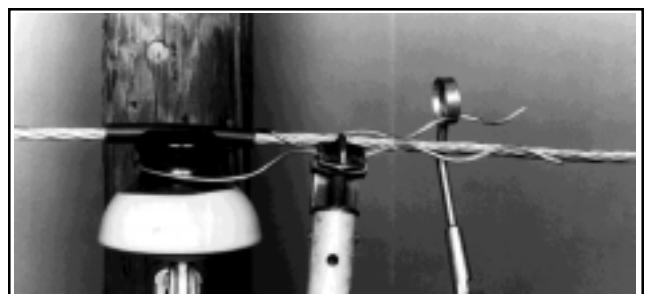
9.00 One method of securing the TWIN-TIE pad onto the conductor, prior to applying the TWIN-TIE: Apply the tie pad so that the conductor does not come into direct contact with insulator.



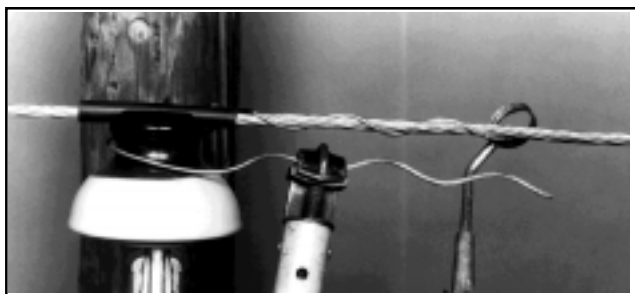
10.00 After applying pad with hot stick, slide the pad over until it rests evenly in the insulator groove (see inset). You may need to lift the conductor with the aid of another hot stick. Make sure the slit in the pad faces up and away from insulator groove.



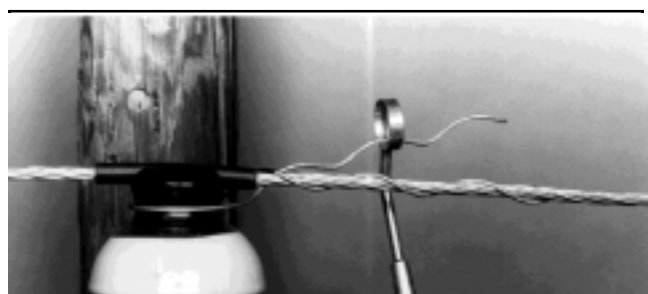
11.00 With the application helix in the upright position, install half of the TWIN-TIE around the neck of the insulator. Slide it parallel to the conductor until the loop of the TWIN-TIE rests against the neck of the insulator.



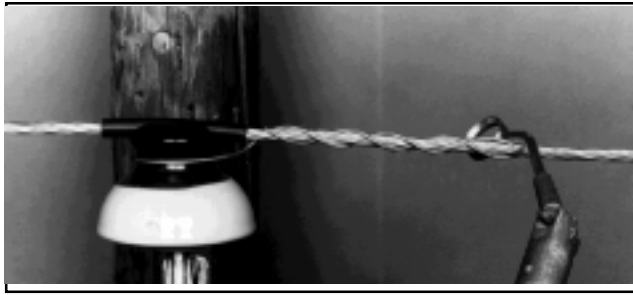
12.00 With the PREFORMED™ Applicator Ring, start to wrap the leg with the application/color code. Lift the leg up and over the conductor (it will hook naturally onto the conductor without any pressure).



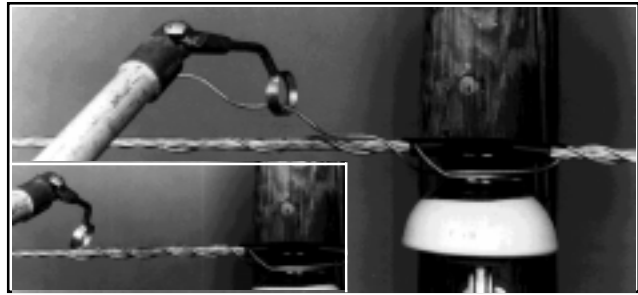
13.00 Continue wrapping to completion. Be sure to snap the end of the leg into position.



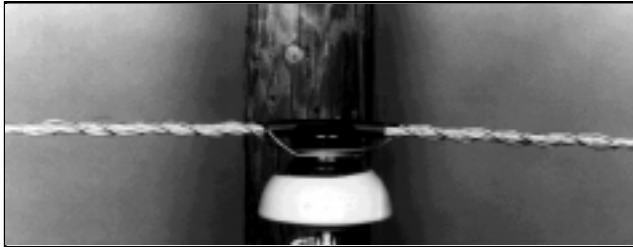
14.00 Wrap the other leg by going under the conductor as shown.



15.00 Continue wrapping to completion. Be sure to snap the end of the leg into position. **CAUTION: Make sure tie loop is tight on insulator neck and under insulator head.**



16.00 Repeat steps 11.00–16.00 to install the other half of the TWIN-TIE and to complete the installation. Be sure to snap the legs into position.



17.00 Completed application of the TWIN-TIE.

SAFETY CONSIDERATIONS

1. This Application Procedure is not intended to supersede any company construction or safety standards. This procedure is offered only to illustrate safe application for the individual. **CAUTION: FAILURE TO FOLLOW THESE PROCEDURES AND RESTRICTIONS MAY RESULT IN PERSONAL INJURY OR DEATH.**
2. This product is intended for a single (one-time) use and for the specified application. **CAUTION: DO NOT REUSE OR MODIFY THIS PRODUCT UNDER ANY CIRCUMSTANCES.**
3. This product is intended for use by trained craftspeople only. This product **SHOULD NOT BE USED** by anyone who is not familiar with and trained in the use of it.
4. When working in the area of energized lines with this product, **EXTRA CARE** should be taken to prevent accidental electrical contact.
5. For **PROPER PERFORMANCE AND PERSONAL SAFETY** be sure to select the proper size TWIN-TIE before application.
6. TWIN-TIEs are precision devices. To insure proper performance, they should be stored in cartons under cover and handled carefully.

PREFORMED LINE PRODUCTS 

P. O. Box 91129, Cleveland, Ohio 44101 • 440.461.5200 • email: inquiries@preformed.com • www.preformed.com

SP2825