

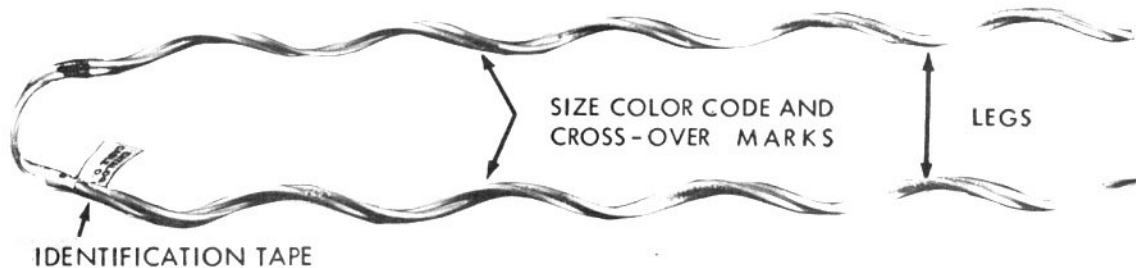
APPLICATION PROCEDURE & SAFETY CONSIDERATIONS **PREFORMED** LINE PRODUCTS



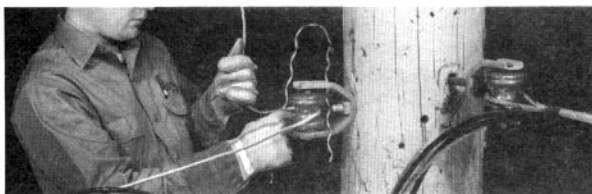
NOVEMBER 1996

SERVICE-GRIP Dead-End

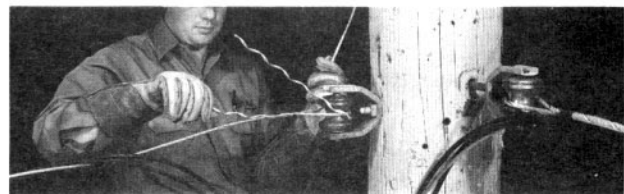
Completely read and understand this procedure before applying product. Special attention should be given to the Safety Considerations located on the last page. We advise the reader to review those considerations now, and then again during the general review of this procedure.



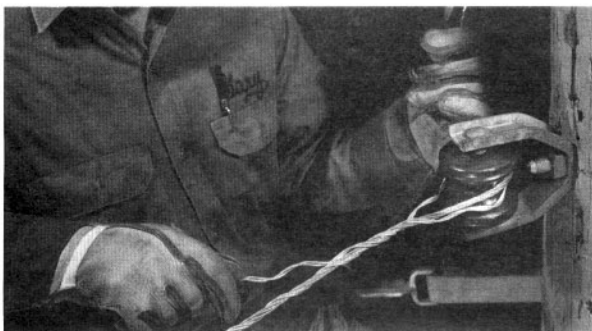
1. PREFORMED™ Service-Grip dead-end nomenclature.



2. Using the spool insulator as a sheave, pull service to desired sag and insert dead-end around the spool as shown.



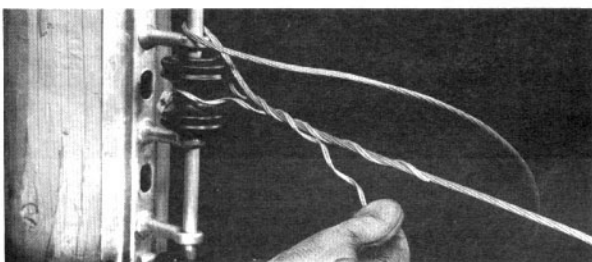
3. Holding the sag with one hand, wrap on one leg of the Service-Grip dead-end, starting at the cross-over mark.



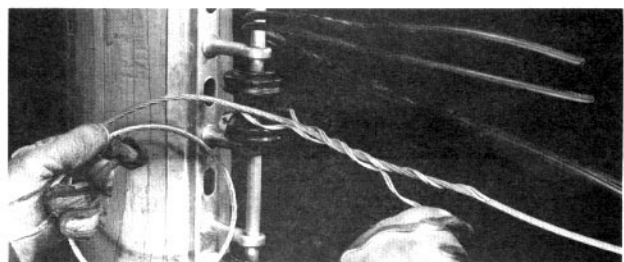
4. Align cross-over marks and wrap on second leg. The Service-Grip dead-end can be applied easily with one hand.



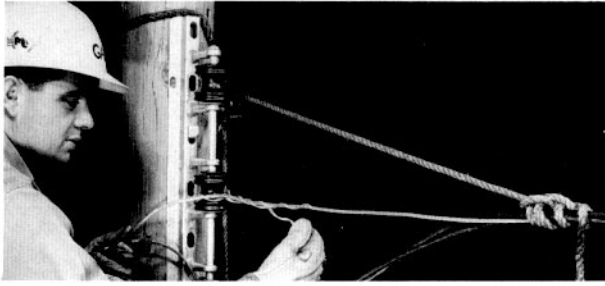
5. Completed application of the PREFORMED Service-Grip dead-end.



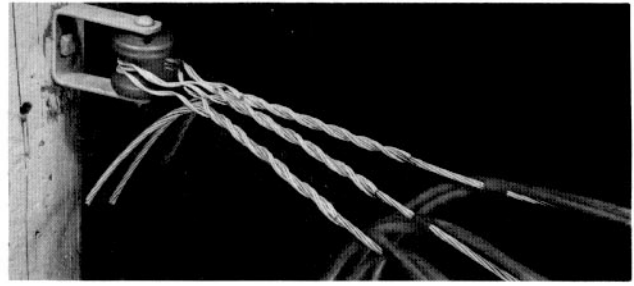
6. ALTERNATE METHOD: Pull service to desired sag, then wrap neutral around spool bar to hold sag while the Service-Grip dead-end is being applied.



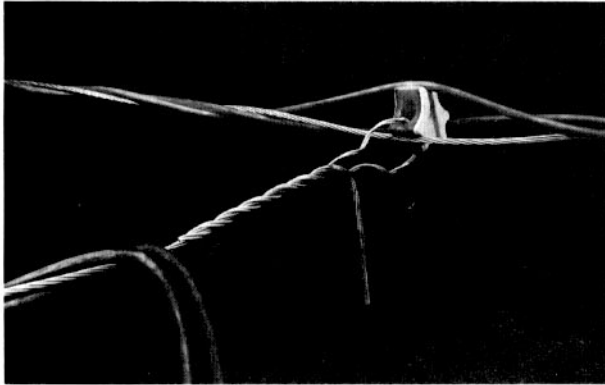
7. ALTERNATE METHOD: The conductors can be used to pull and hold triplex to desired sag while Service-Grip dead-end is applied to neutral.



8. **ALTERNATE METHOD:** The hand line is split and a rolling bend knot tied to the triplex. The groundman can pull and hold triplex to desired sag while lineman applies the Service-Grip dead-end.



9. Three **PREFORMED** Service-Grip dead-ends installed on one spool insulator.



10. **PREFORMED** Service-Grip dead-end used at mid span.

GENERAL NOTES

1. **PREFORMED** Service-Grip dead-ends are to be used on service drops only. They are not to be used for primary or secondary circuits on distribution lines.
2. **PREFORMED** Service-Grip dead-ends are precision devices. To insure a tight assembly and prevent distortion, they should be installed as illustrated.
3. To minimize grit-loss, **PREFORMED** Service-Grip dead-ends should be stored in cartons under cover -- preferably shelf storage -- until used. Do not suspend from hooks in the back of service trucks.
4. A. **PREFORMED** Service-Grip dead-ends may be applied three times on new installations, if sag adjustments are necessary.
B. **PREFORMED** Service-Grip dead-ends are not to be reused after the final application.
5. **PREFORMED** Service-Grip dead-ends are designed for use on smooth-contoured hardware and insulators with ample radius to maintain the loop area (1" min. loop diameter). Drive hooks are not recommended without the use of a thimble in the loop of the Service-Grip dead-end.

SAFETY CONSIDERATIONS

1. This application procedure is not intended to supersede any company construction or safety standards. This procedure is offered only to illustrate safe application for the individual. **CAUTION; FAILURE TO FOLLOW THESE PROCEDURES AND RESTRICTIONS MAY RESULT IN PERSONAL INJURY OR DEATH.**
2. This product is intended for a single (one-time) use and for the specified application. **CAUTION; DO NOT REUSE OR MODIFY THIS PRODUCT UNDER ANY CIRCUMSTANCES.**
3. This product is intended for use by trained craftspeople only. This product **SHOULD NOT BE USED** by anyone who is not familiar with and trained in the use of it.
4. When working in the area of energized lines with this product, **EXTRA CARE** should be taken to prevent accidental electrical contact.
5. For **PROPER PERFORMANCE AND PERSONAL SAFETY** be sure to select the proper size **PREFORMED™** product before application.
6. **PREFORMED** products are precision devices. To insure proper performance, they should be stored in cartons under cover and handled carefully.



PREFORMED LINE PRODUCTS

P.O. Box 91129, Cleveland, Ohio 44101 • 440.461.5200 • www.preformed.com • e-mail: inquiries@preformed.com