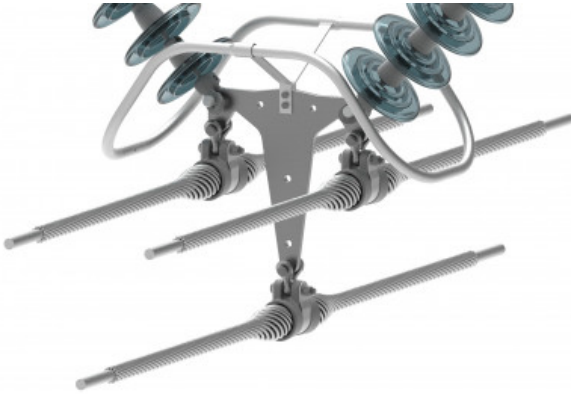


Suspension Assembly V-String Assembly - Tangent Suspension, Tri-Bundle Conductor, 50K



Weight: 0.00kg

Dimensions: 0.00cm x 0.00cm x 0.00cm

Description

PLP **Tri-Bundle String Assemblies**, including tangent suspensions, angled suspensions, and dead-ends, have been designed to accommodate the maximum vertical or tensile load of all conductors in the bundle. Standard configurations come in 18" x 18" x 18" spacing. The assemblies can be designed to accommodate specified insulator strength, string length, bundle spacing, and other factors. Designs may be independently tested to ensure corona performance at the specified line voltage.

Features

- All items will arrive in one weather-resistant crate, so all string parts will be delivered at the same time.
- String Assemblies are packaged and marked by string or tower for easy field identification, to minimize handling, and to expedite string installation.
- The number of assemblies per crate can be modified based on customer requirements.
- The catalog numbers provided represent commonly used string configurations. Please contact a PLP sales representative if you are interested in design modifications, or creation of an assembly to your specification.

Important Notes:

- Catalog numbers for assemblies are provided as design examples only. Specific assembly designs and part numbers will be configured per customer specifications. Please contact PLP Technical Support for project-specific part numbers.
- All galvanizing has been performed per ASTM A153. Parts are available with Charpy compliance, magnetic particle inspection, and radiographic inspections as specified. Please contact PLP for details.
- Parts with length "XX" are variable length and dependent on the string design and line parameters.
- Suspension clamps and associated hardware will be specified on a per-application basis. Please see the Suspension and Support catalog for options and details.
- Compression Dead-End Assemblies and associated hardware to be specified on a per-application basis.
- Corona rings, when required, are packaged separately to avoid damage.
- Please see the individual component drawings for detailed dimensions and material properties of parts.
- For bundle spacings differing from examples shown, please contact PLP.

Documentation
Sales Materials

[S-VT-32-50-XXX - Catalog Pages](#)

Part Tables

Catalog Number
S-VT-32-50-XXX

Bill of Materials				
Part Number	Description	QTY	Material	UBS lb
AS-60WBNK	Anchor Shackle	2	Galvanized Steel	60,000
EEL-40-XX	Eye-Eye Link, Variable Length	2	Galvanized Steel	40,000
BYC-50	Ball Y-Clevis	2	Galvanized Steel	50,000
Supplied By Other	Insulator String	2	Glass	40,000
CR-022	Corona Ring	1	Aluminum	-
SYC-50	Socket Y-Clevis	2	Galvanized Steel	50,000
YPT-66115	Tri-Bundle Yoke Plate	1	Galvanized Steel	50,000
See Note 4 in Features	Attachment Hardware	2	Galvanized Steel	30,000
See Note 4 in Features	ARMOR-GRIP Suspension, EHV	2	Aluminum	25,000
SN-34	Shield Nut, 3/4"	7	Aluminum	-