

QUALITY MOUNTING HARDWARE SOLUTIONS FOR THE PV SOLAR INDUSTRY



PRODUCTS FOR PV SOLAR MOUNTING APPLICATIONS

ROOF MOUNT SYSTEMS

Commercial



POWER Max™

- **Non-penetrating**, ballasted commercial flat roof mounting system
- Three choices – 5° or 10° tilt, dual tilt (East/West), and flush mount
- Stackable, lightweight base – easier transport
- Wind tunnel tested and qualified – reduces ballast
- Integrated grounding, code compliant
- Preassembled clamp – no loose hardware
- Unique, adjustable inter-row spacing for maximum density and layout flexibility



Commercial



Ballasted Power Rail™ Mounts (BPRM)

- **Non-penetrating**, flush mount commercial flat roof system
- Power Rail™ top-clamping system with *Lock-in-Place RAD™ hardware
- High density, high energy output per square foot
- EPDM rubber (included) protects roof surfaces
- Wind tunnel tested – low ballast weight
- Follows drainage contours of roof
- UL 2703 compliant with integrated grounding

Residential & Commercial

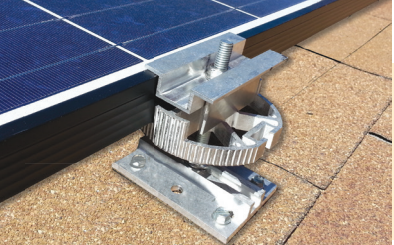


Power Rail™ Mounting System (PRM)

- P4, P6, P8, P14, XD, UD, LD and MD rail options for optimal span-to-cost ratio
- High strength, top-clamping mounting system with *Lock-in-Place RAD™ hardware
- Parallel to roof, tilted or open structure applications
- Single tool assembly
- Attachment options for any style roof application or structure
- UL 2703 compliant with integrated grounding



Residential



POWER DISK™ Rail-less Mounting System

- Mounts anywhere on the roof or attached directly to rafters
- Works with 60 and 72 cell modules
- Eliminates long rails – easier transport
- Landscape or portrait mounting
- Rotating assembly provides vertical adjustment
- Sealing butyl mastic (included) or optional flashing



Commercial



Power Rail™ KTS Mounts (KTS)

- Tilted commercial roof mounting system
- 10° or 20° tilt options to maximize energy production
- Ideal for East/West pitching roofs or structures
- Mounts directly to metal roof attachment hardware, structure or roof substrate
- Power Rail top-clamping system with *Lock-in-Place RAD™ hardware

*Lock-in-Place RAD™ Bolts are patented.

GROUND AND POLE MOUNT SYSTEMS

Utility Scale



Power Peak™ GS & AL

- Designed for Large Scale applications featuring fewer components
- Installs over pile driven standard I-Beams
- Tables optimized to specific site requirements
- Field adjustable – faster installation
- Features *Lock-in-Place RAD™ hardware
- UL 2703 compliant with integrated grounding



Residential & Commercial



Multi-Pole Mounts (MPM-G2)

- Designed to mount on 3" or 4" SCH 40/80 pipe (installer supplied)
- Fewer ground penetrations than traditional ground mount systems, saving labor and materials
- Optional ground clearance – ideal for shade structures or car ports
- Power Rail™ top-clamping system with *Lock-in-Place RAD™ hardware
- Seasonal elevation adjustments – positive locking brackets

Commercial



Large Ground Mounts (LGM)

- Fixed tilt, easy to assemble pipe structures
- Designed to specific site requirements
- Power Rail™ top-clamping system
- TIG-welded, high strength aluminum fittings
- Schedule 40 pipe supplied by installer



Top-of-Pole Mounts (TPM) – Universal (UTPM)

- Heavy gauge steel and aluminum construction
- Securely mount 1 to 18 modules on a single pole
- Standard module-specific design reduces parts and assembly time
- Universal design (UTPM) adapts to most 60 cell modules
- Seasonal elevation adjustments from 15° to 65°
- Mounts on standard Schedule 40 or 80 rigid steel pipe

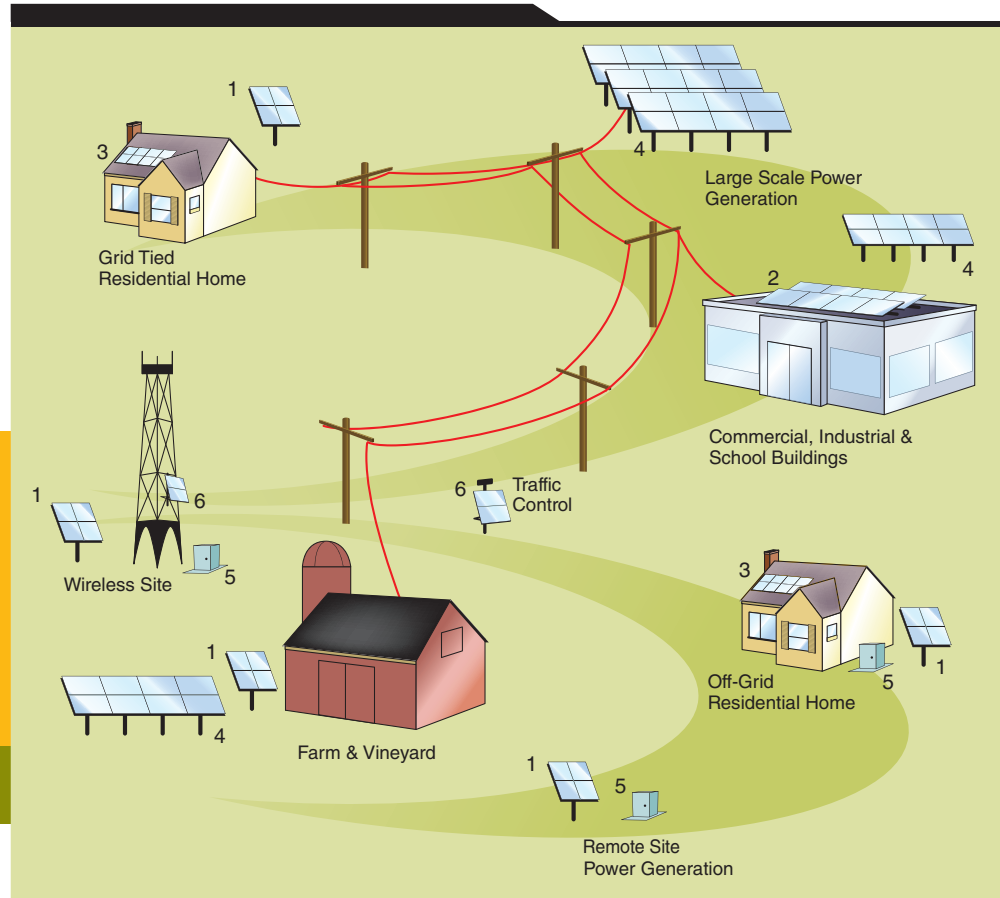


Side-of-Pole Mounts (SPM)


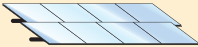


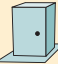
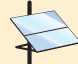
- Available in painted steel or mill-finish aluminum construction
- Mounting options include band clamps, u-bolts or through bolts
- Adjustable tilt angle
- Heavy duty stainless steel mounting hardware
- Tower mounting options available

*Lock-in-Place RAD™ Bolts are patented.

Mounting Hardware Solutions for Any Solar Application



Solutions Key

 1. Top-of-Pole Mounts	 2. Ballasted Roof Mounts - POWER Max™ - Ballasted Power Rail	 3. Roof Mounts - Power Rail™ - POWER DISK™	 4. Ground Mounts - Power Peak™ - Multi-Pole Mounts - Large Ground Mounts
 5. Power Box™ Enclosures	 6. Side-of-Pole Mounts		



Albuquerque Office
 1700 Louisiana Blvd., Suite 130
 Albuquerque, NM 87110

Corporate Headquarters
 660 Beta Drive
 Mayfield Village, OH 44143

Telephone: 800.260.3792
 Fax: 505.889.3548
 www.preformed.com
 E-mail: info@plpsolar.com



© 2017 Preformed Line Products Company
 Printed in the U.S.A.
 SL-BR-1003-14
 08.17.IH