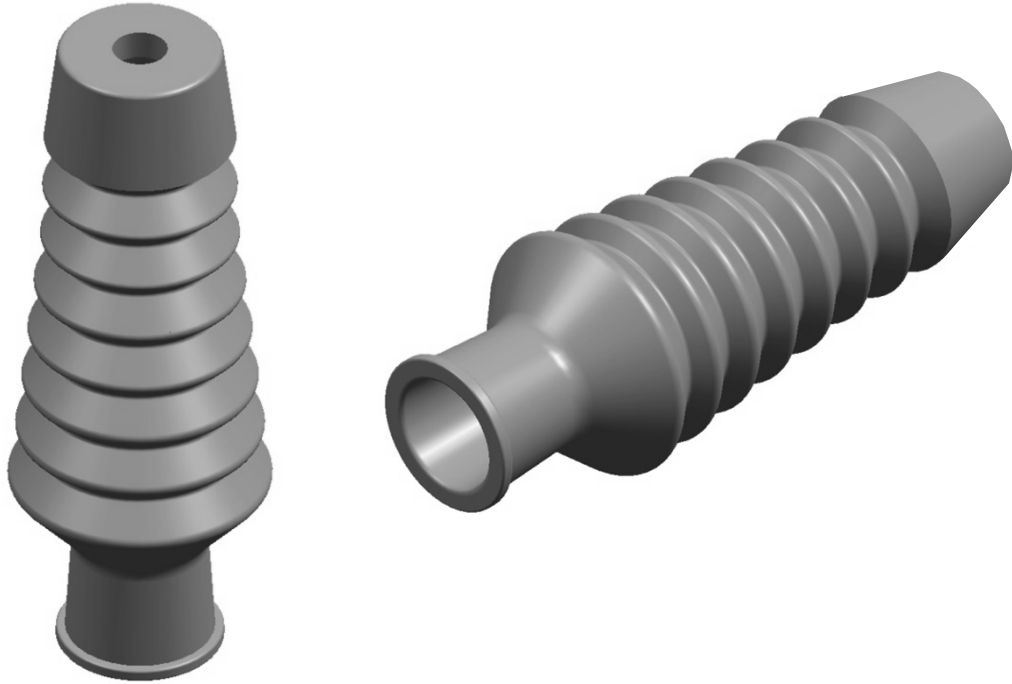


# UNIVERSAL INSULATION TYPE CUB – 2

$U_o / U (U_m)$  6 / 10 (12) kV – 8,7 / 15 (17,5) kV

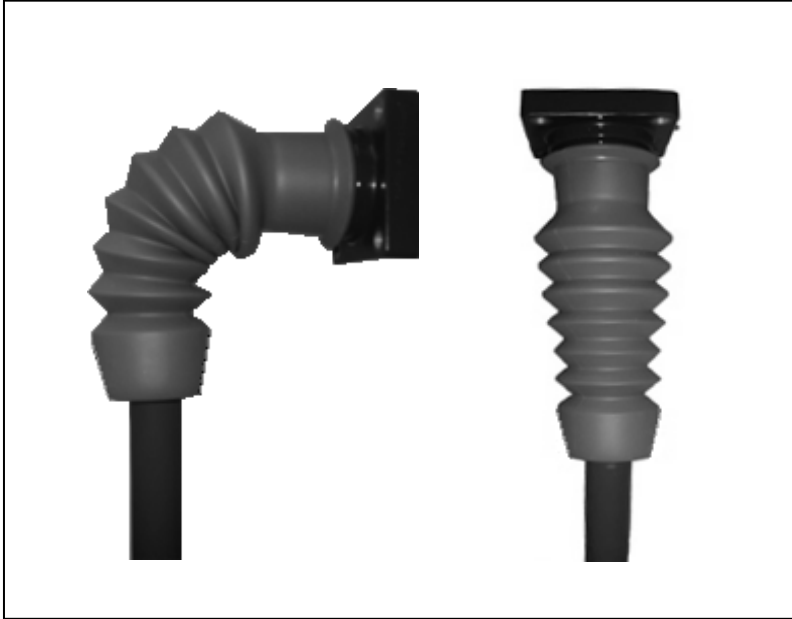


**PLP Part No.: CPA-CUB2**

- **Universal solution for different cross-sections 35 - 400mm<sup>2</sup>, up to 17.5kV**
- **Universal application, re-usable for right angle and straight bushing adaptor.**
  - **Excellent tracking and erosion resistant.**
  - **Unlimited storage**
  - **No special tools required**

**Systems For Professionals**

**CELLPACK**  
Electrical Products



## Features

Cold applied medium voltage Universal Insulation Boots for right angle and straight bushing application on switchgears and transformers connection.

## Characteristics

The Cold applied CUB – 2 is designed to insulate termination and bushing connection, applicable for right angle and straight application, to improve phase to phase and phase to ground insulation level due to limited space and also to prevent the terminations from flashover. Made of high degree Silicone, Universal Boots type CUB – 2 are very flexible and have permanently elastic property (no ageing). Permanent elasticity results in permanent interface pressure and it follows all variations in the cable dimensions during load cycling.

## Application

- Voltage level:  $U_0 / U(U_m)$  6 / 10(12) kV – 8.7 / 15 (17.5) kV
- Cable size: 35 – 400 mm<sup>2</sup>
- Bushing diameter: 46 – 70 mm (400/630A type)
- BIL: 95 kV

## Scope of delivery

- 3 pcs Universal Boots
- 2 pcs Lubricant
- 3 pcs Applicator
- 1 pair Plastic gloves
- 1 pce Working instruction

AUTHORISED DISTRIBUTOR



**PREFORMED** LINE PRODUCTS

The connection you can count on.

Preformed Line Products (Australia) Pty Ltd | ABN 27 004 533 877

190 Power St Glendenning, NSW 2761 Australia

Mail Address: PO Box 626, St. Marys NSW 1790 Australia

+612.8805.0000 | sales@preformed.com | www.preformed.com.au