



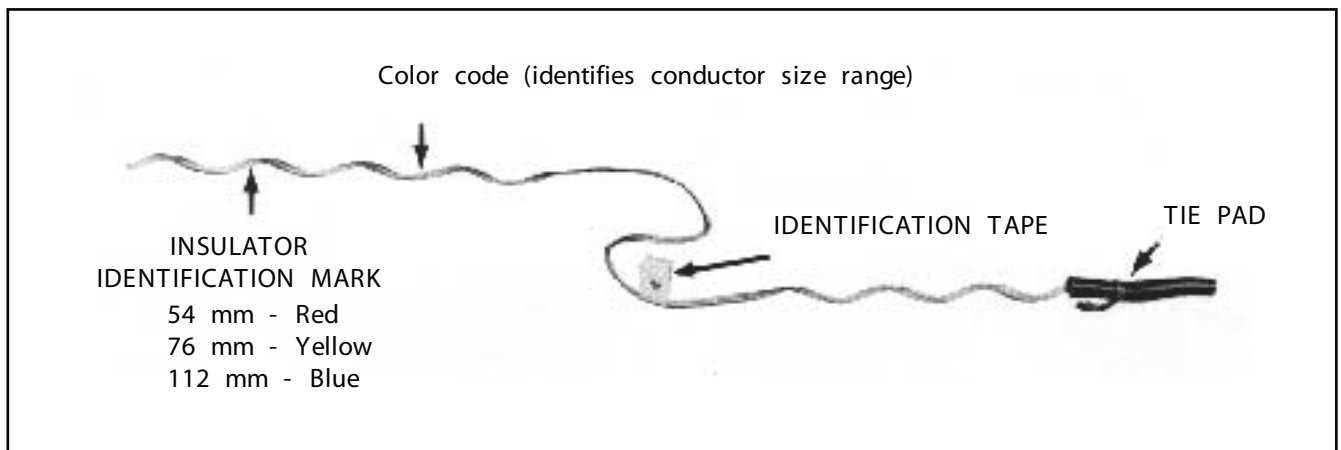
Application Procedure & Safety Considerations

PREFORMED LINE PRODUCTS

DISTRIBUTION TIE

Completely read and understand this procedure before applying products. Special attention should be given to the Safety Considerations located on the last page. We advise the reader to review those considerations now, and then again during the general review of this procedure

These products are designed and tested to be used only on insulators complying with the dimensional requirements of AS2947.2 – 1989.



DISTRIBUTION TIE as received in the field.
NOTE: Tie pad may be covering insulator identification mark.

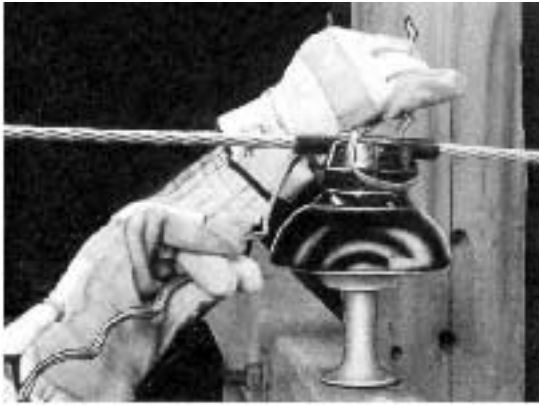
COLD APPLICATION



1) Apply the Tie Pad to conductor so that conductor does not come into direct contact with insulator.

2) Position Distribution Tie on insulator as shown, so that both legs are parallel to the conductor.

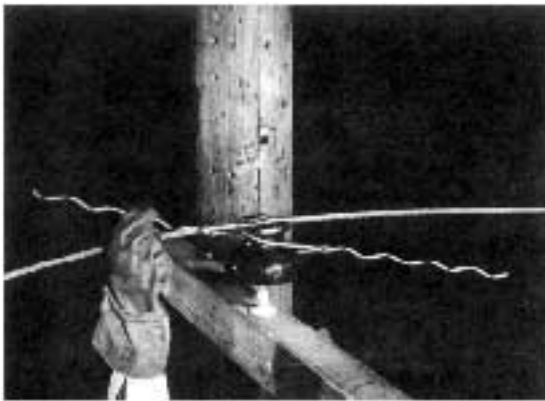




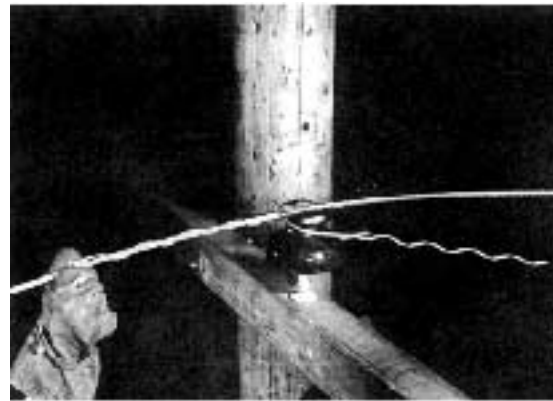
3) Rotate the Distribution Tie in a counter clockwise direction, making certain that both legs go under the conductor as shown.



4) Continue to rotate the legs and the Distribution Tie will seat itself, as shown.



5) Start to wrap on one leg of the Distribution Tie as shown.



6) Continue to apply the first leg to completion. Be sure to snap the end of the leg into place with slight thumb pressure.

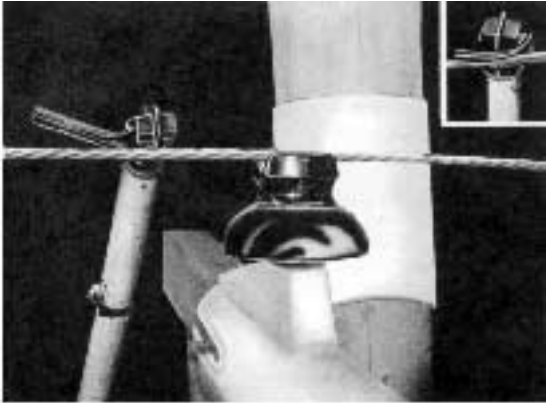


7) Wrap on the other leg of the Distribution Tie as shown and snap the leg into position in the same manner

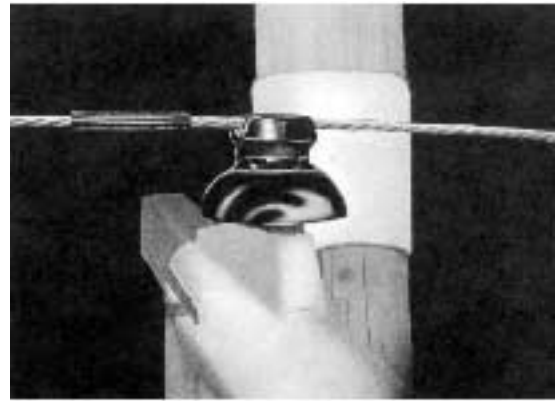


8) Completed application of the Distribution Tie.

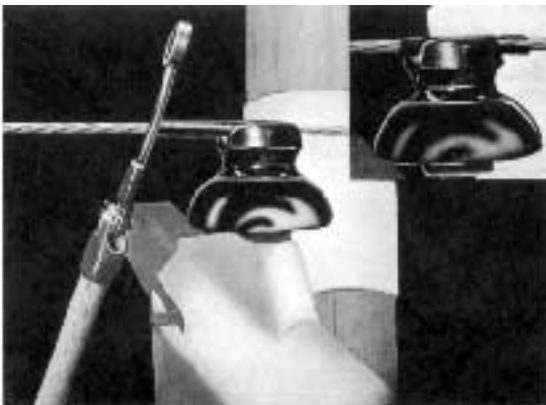
HOT APPLICATION



- 1) The method of securing Distribution Tie pad onto the conductor, preparatory to the application of the Distribution Tie.



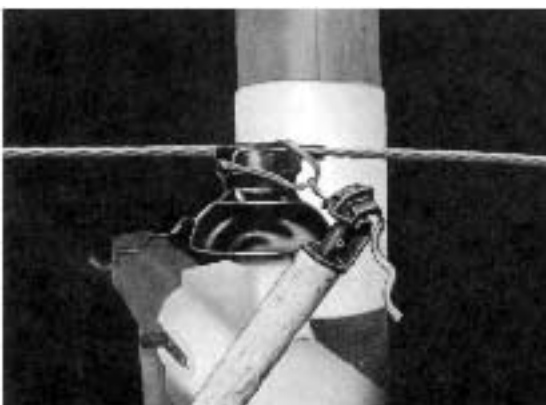
- 2) After applying pad with jumper holding tool, slide the...



- 3) ...pad over so that it rest in the insulator groove (see inset).



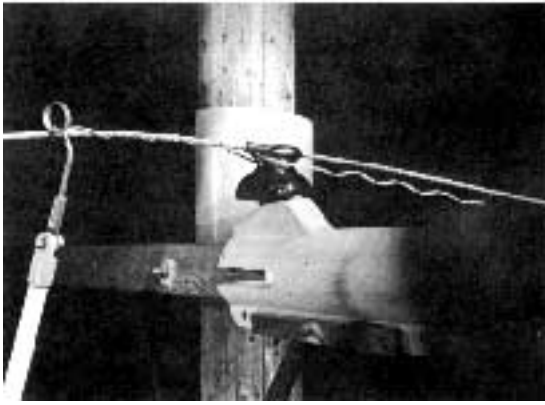
- 4) Position Distribution Tie on insulator as shown, so that both legs are parallel to the conductor.



- 5) Rotate the Distribution Tie in a counter clockwise direction, making certain that both legs go under the conductor as shown.



- 6) With the PREFORMED Applicator Ring start to wrap on one leg of the Distribution Tie



7) Continue wrapping to completion. Then snap the end of the leg into place



8) Follow the same procedure stated in step #6



9) Follow the same procedure stated in step #7.



10) Completed Hotstick application of the Distribution Tie.

SAFETY CONSIDERATIONS

- 1) For proper performance and personal safety be sure to select the proper size PREFORMED Distribution Tie before application.
- 2) PREFORMED Distribution Tie are precision devices. To ensure tight assembly, they should be stored in cartons under cover and handled carefully.
- 3) This application procedure is not intended to supersede any company construction or safety standards. This procedure is offered only to illustrate safe application for the individual. Failure to follow these procedures and restrictions may result in personal injury.
- 4) When working in the area of energized lines, extra care should be taken to prevent accidental electrical contact.
- 5) This product is intended for use by trained linesmen only. This product should not be used by any one who is not familiar with and trained in the use of it.



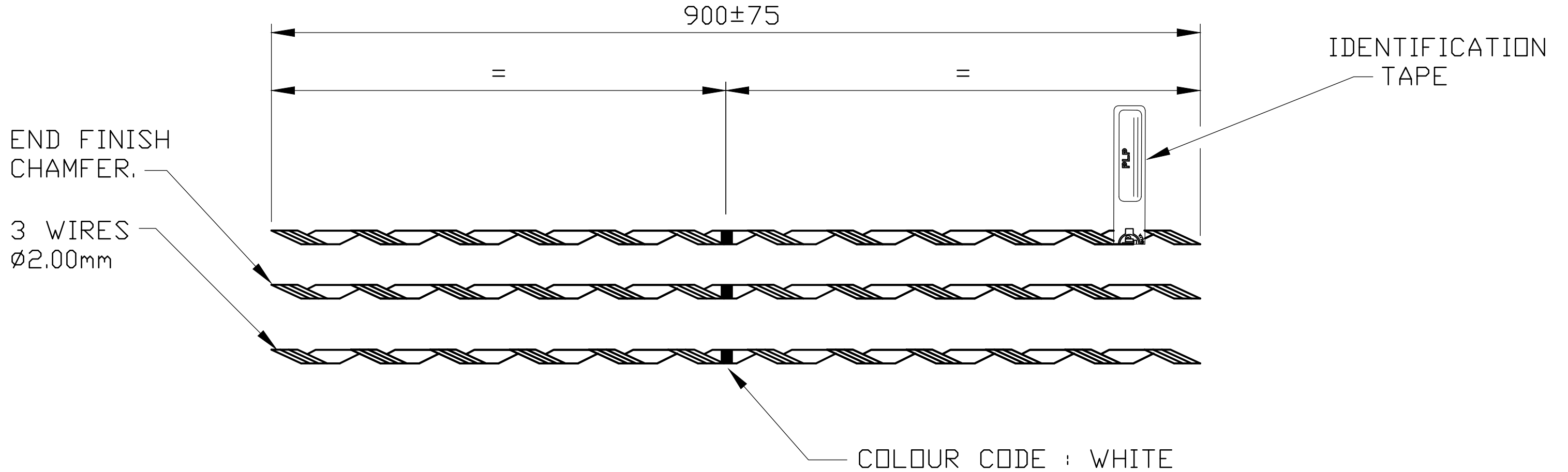
**PREFORMED
LINE PRODUCTS
(AUSTRALIA) PTY LTD**
A.B.N. 27 004 533 877

190 Power st. Glendenning, NSW Australia 2761
PO Box 106, Glendenning Business Centre, NSW Australia 2761
Phone: (02) 8805 0000 Fax: (02) 8805 0090
intl 61 2 8805 0000 intl 61 2 8805 0090

Email: plpaus@preformed.com.au
Web: www.preformed.com.au

NOTES

- 1. ALL DIMENSIONS IN MILLIMETRES.
- 2. TOLERANCES UNLESS OTHERWISE STATED:-
 - a. HOLE DIAMETRE ±0.5mm
 - b. LINEAR DIMS. UP TO 30mm ±1.5mm
 - c. LINEAR DIMS. OVER 30mm ±5% UP TO A MAX. OF 5mm.
- 3. BRACKETED DIMENSIONS DO NOT AFFECT INTERCHANGEABILITY OR COUPLING AND ARE FOR GUIDANCE ONLY.
- 4. MATERIAL TO AS1154 GALVANIZING TO AS/NZS 4680



LAY : RIGHT HAND
 MATERIAL : GALVANIZED STEEL
 NUMBER OF SETS : 3

PRODUCT TAPE COLUR: WHITE

3/2.75 MM (3/12) SC/GZ DC4464 110546 MM/YY	GALV. STEEL SPLICE CAT No: GFS-055
--	---------------------------------------

A	MP	13/11/90	C
CHK	MH	13/11/90	CHK
INITIAL ISSUE		A6336	
DSC NO.5566			

THIS DRAWING IS THE EXCLUSIVE PROPERTY OF PREFORMED LINE PRODUCTS (AUSTRALIA). REPRODUCTION THEREOF IS PROHIBITED AND IS TO BE USED ONLY WITH THE EXPRESSED PERMISSION OF THE COMPANY

PART No: GFS-055			
GALVANIZED STEEL SPLICE			
DRAWN	MP	PASSED	DATE

	PREFORMED LINE PRODUCTS (AUSTRALIA) PTY. LTD.
SCALE	N.T.S.
DRAWING NUMBER 070-003-RD	



PLP (AUSTRALIA) PTY LTD
ENGINEERING DEPARTMENT

DATE – 24th March 2015

TYPE TEST REPORT NO: T9535
TEST REFERENCE NO: T15/03
PAGE 1 of 6

MECHANICAL STRENGTH TYPE TEST

ON:

GALVANISED STEEL DISTRIBUTION TIE
OVER GALVANISED ARMOUR RODS

PART NOS. GDT-102A-76 + GAR-055

Testing Officer:  (Jose-elmer Simeon)

Approved by:  (Florian de Celis, Compliance Manager)

Date Approved: 24/03/15

190 Power Street Glendenning NSW 2761 AUSTRALIA
Phone: 8805 0000, INTL (612) 88050000
Fax: 8805 0090, INTL (612) 88050090

THE QUALITY SYSTEM OF PLP AUSTRALIA HAS BEEN CERTIFIED TO
AS/NZS ISO9001:2008 BY GLOBAL MARK REGISTER QUALITY ASSURANCE

Fittings and Accessories for Power and Communication.
Engineered Plastics and Extrusions.
Data Communication Products.